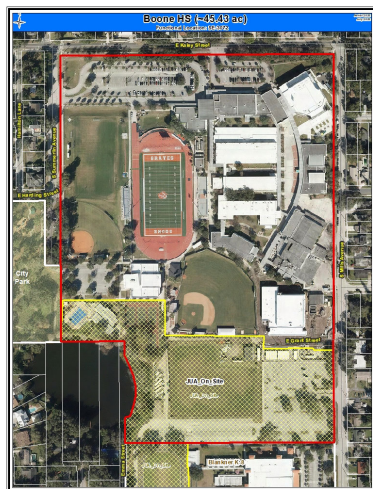


Project Fact Sheet

Boone HS (CR Large)

1000 E Kaley St
Orlando, FL 32806



Project Information:

- **Project Start:** Mar 2022
- **Project Completion:** Nov 2022
- **Funding Source:** Sales Tax
- **District:** 3
- **Learning Community:** SW
- **Architect/Engineer:** BRPH
- **Contractor:** Williams Co
- **Project Manager:** Susan Deal
- **Project Budget:** \$6.4 M

Project Description:

Replacement of the existing Central Energy Plant (CEP) in a more accessible location that includes new high efficiency air cooled chillers, pumps, VFDs, controls and accessories.

Project Update:

This is a 2-step project.

Step 1 - BRPH and Engineers to investigate options to allow truck access to the CEP in it's current location or recommend a new location with options.

Step 2 - provide design for approved location.

BRPH proposal under review.