

School Board District 5

October 22, 2018

60% Design Community Meeting

ESE Campus Consolidation

Please sign in on your mobile device: <http://communitymeeting.ocps.net/>



**Orange County
Public Schools**

ESE Campus Consolidation Update Meeting Agenda

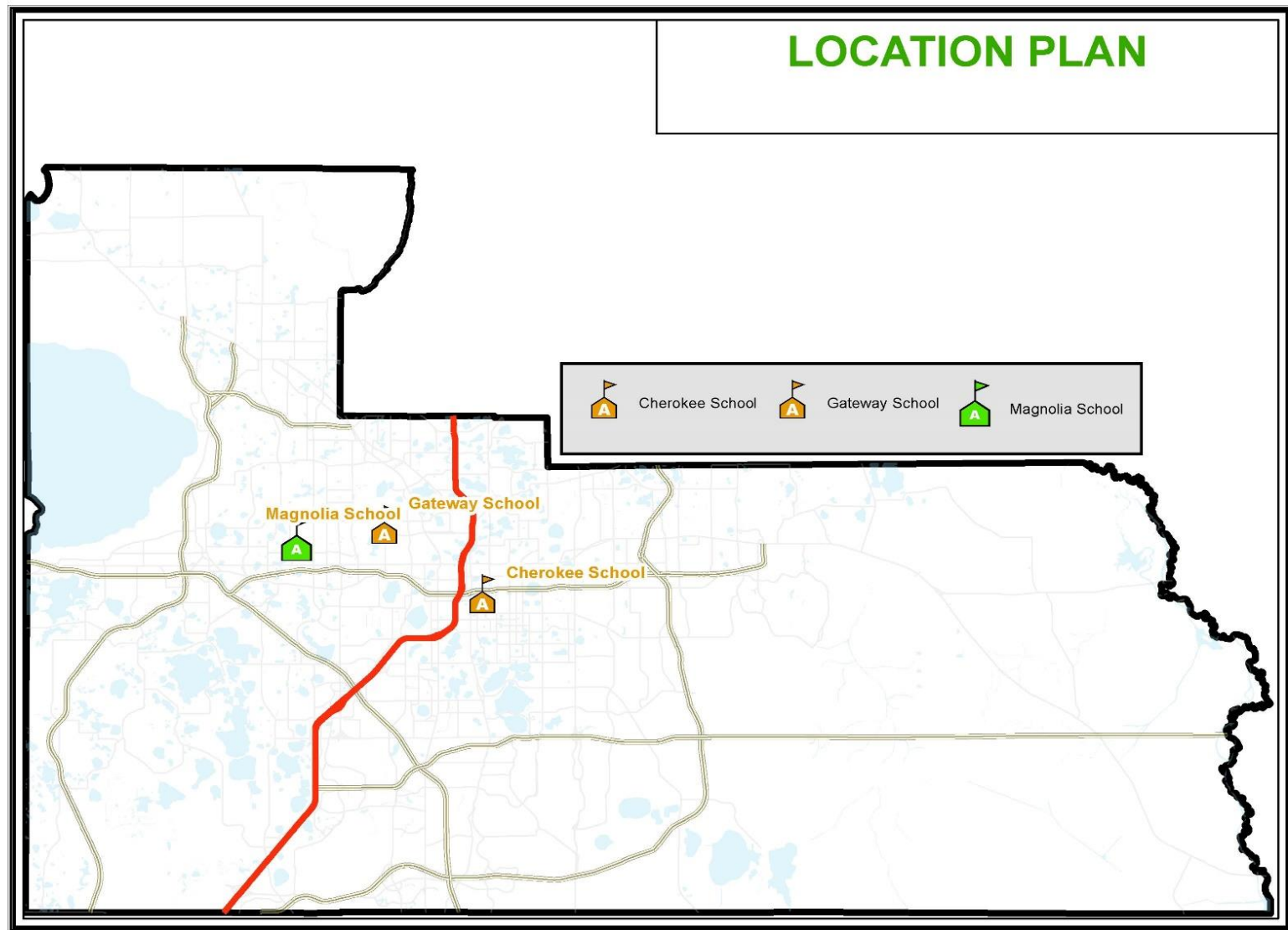
October 22, 2018 Gateway at 5:00 pm, Magnolia at 7:00 pm

- Opening Remarks & Introduction of Public Officials – Kathleen “Kat” Gordon
- Acknowledgements & Introductions of Project Team – Jessma Lambert
- Project Update – Harvard Jolly Architects
- Questions and Answers
- Adjournment

Project Information

- Location Map
- Three Separate ESE Campuses
- School Information & Programs
- Master Site Plan and Phasing
- Floor Plans
- Sustainability
- Schedule

Location Map



Three Separate ESE Campuses



Magnolia School

- 132 Middle and High School Students
- Circa 1970's & 80's Campus
- Residential Neighborhood
- **Severe Cognitive Disabilities**



Cherokee School

- 48 Elementary School Students
- Circa 1926 Campus
- Residential Neighborhood off 408
- **Severe Behavior Disorders**



Gateway School

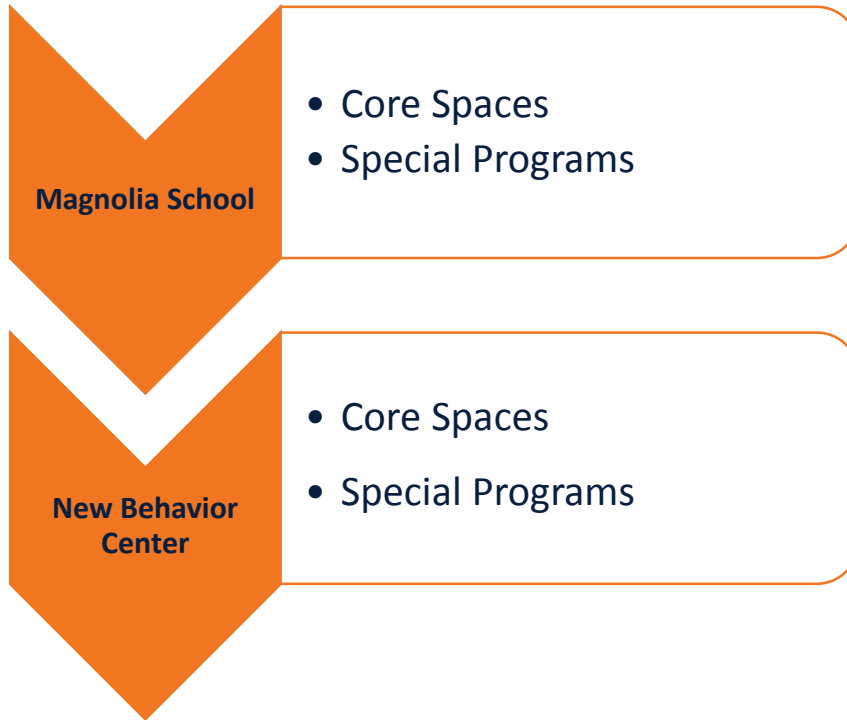
- 59 Middle and High School Students
- Circa 1961 Campus
- Industrial Park Location
- **Severe Behavior Disorders**

Current Programs

Priority List	Campus	School Information	Programs
113	Magnolia School	<ul style="list-style-type: none"> • Profound Mental Handicaps • Special Medical or Behavioral needs • Elementary School Gifted Magnet 	School Based Vocational Education (CBVE) <ul style="list-style-type: none"> • Student Services • Agriculture • Recycling • Gift Shop • Hospitality • Thrift Store • The Bistro • Print Shop • Custodial
112	Cherokee School	<ul style="list-style-type: none"> • K-5 Transitional 	<ul style="list-style-type: none"> • K-5 Program
131	Gateway School	<ul style="list-style-type: none"> • Severe Behavior Disorders • Grades 6 thru 12 • Project Based Learning • Vocational Academies 	<ul style="list-style-type: none"> • Digital Design • Culinary Arts • Patient Care

Planned Program

Site Amenities



School	Planned Enrollment	Parking
Magnolia	150 Middle & High	161
New Behavior Center	122 Elementary, Middle & High	161
Total	272	322

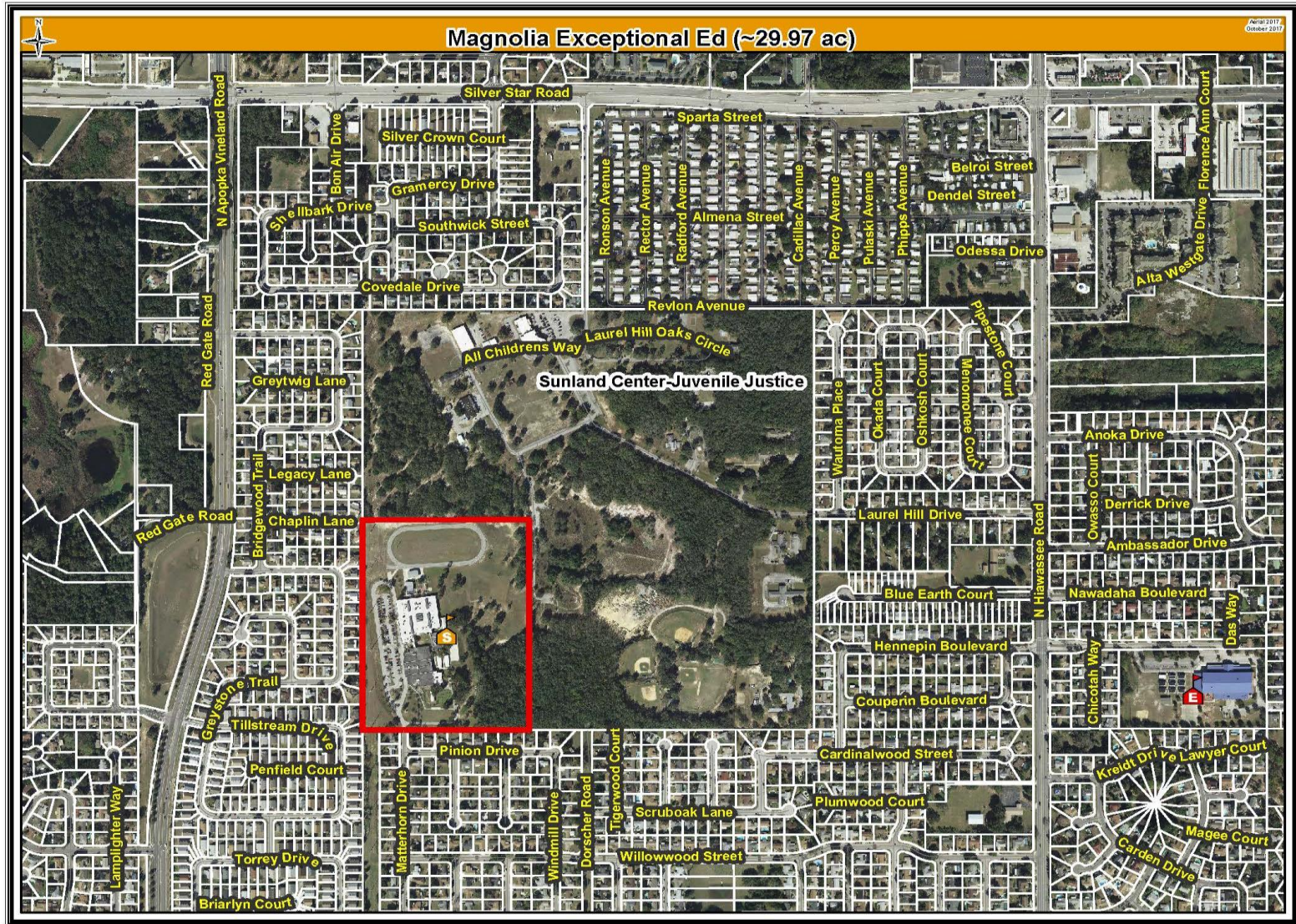
Magnolia School Program

Core Spaces	Special Programs
ESE Self Contained Classrooms	Life Skills Labs and Classrooms
Music Lab	Therapy, Sensory, De-escalation Rooms
Art Lab	Agriculture, Lab/Greenhouse
Science Lab	Culinary Lab/Classroom
Math Lab	Hospitality Lab/Classroom
Media Center	School Store/Card Making Classroom
Dining Room/Kitchen/Multipurpose	Recycling Lab
Covered Play Pavilion	Commercial Laundry Lab/Classroom
Administrative Suite	Physical Education

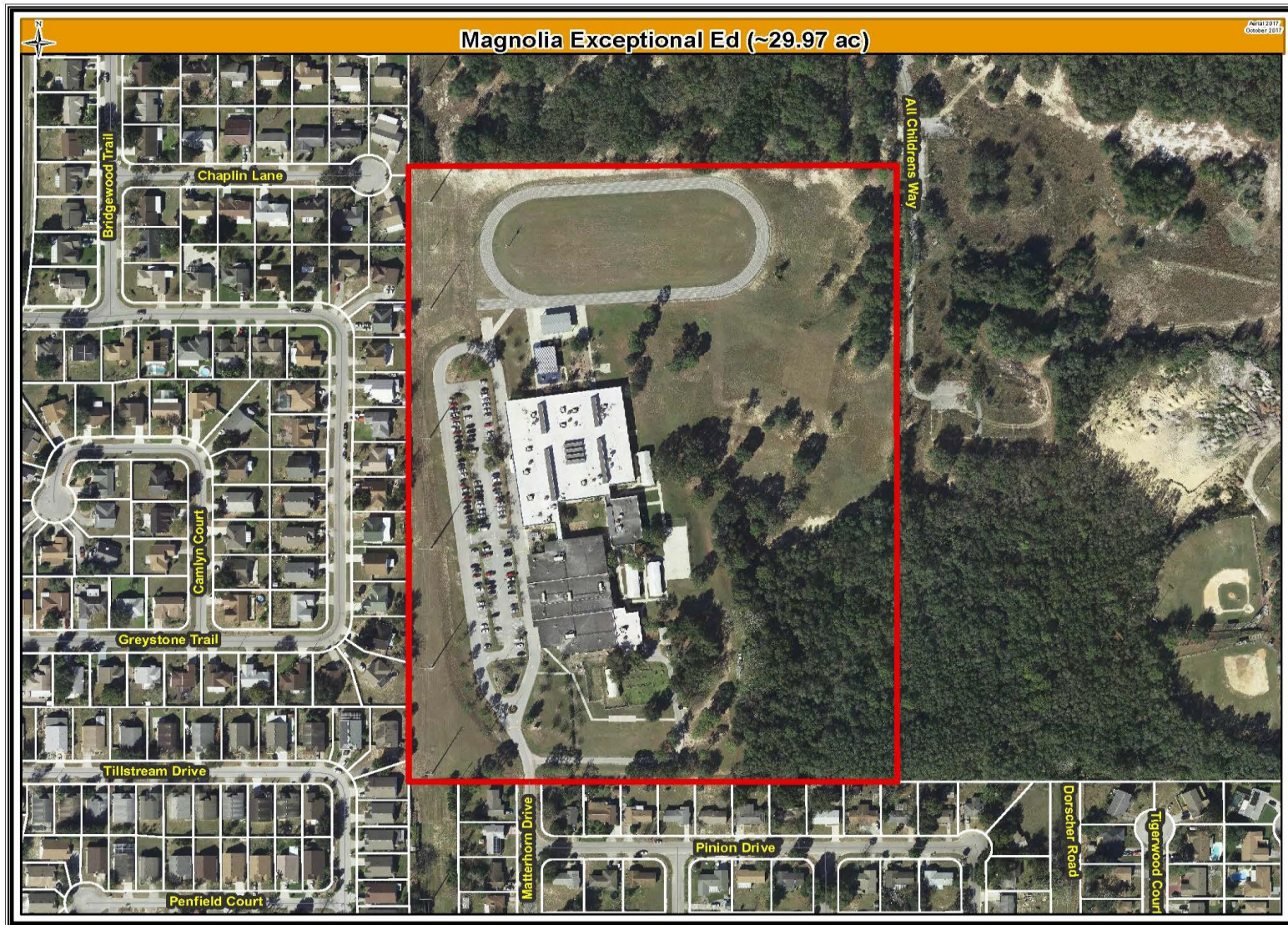
Gateway/Cherokee Behavior Center Program

Core Spaces	Special Programs/Vocational
ESE Self Contained Classrooms	Sensory/De-Escalation Room
Science Classroom/Labs	Speech
Drama/Music/Art	Group Session
Covered Play Pavilion	Digital Design
Playground	Culinary Arts
Media Center	Patient Care

Site Location Analysis



Site Plan: Existing



Site Plan

PROJECT DATA

Site Area
30.02 Acres

MAGNOLIA SCHOOL
Grades 6-12

Student Capacity
150 Students

Parking
161 Spaces

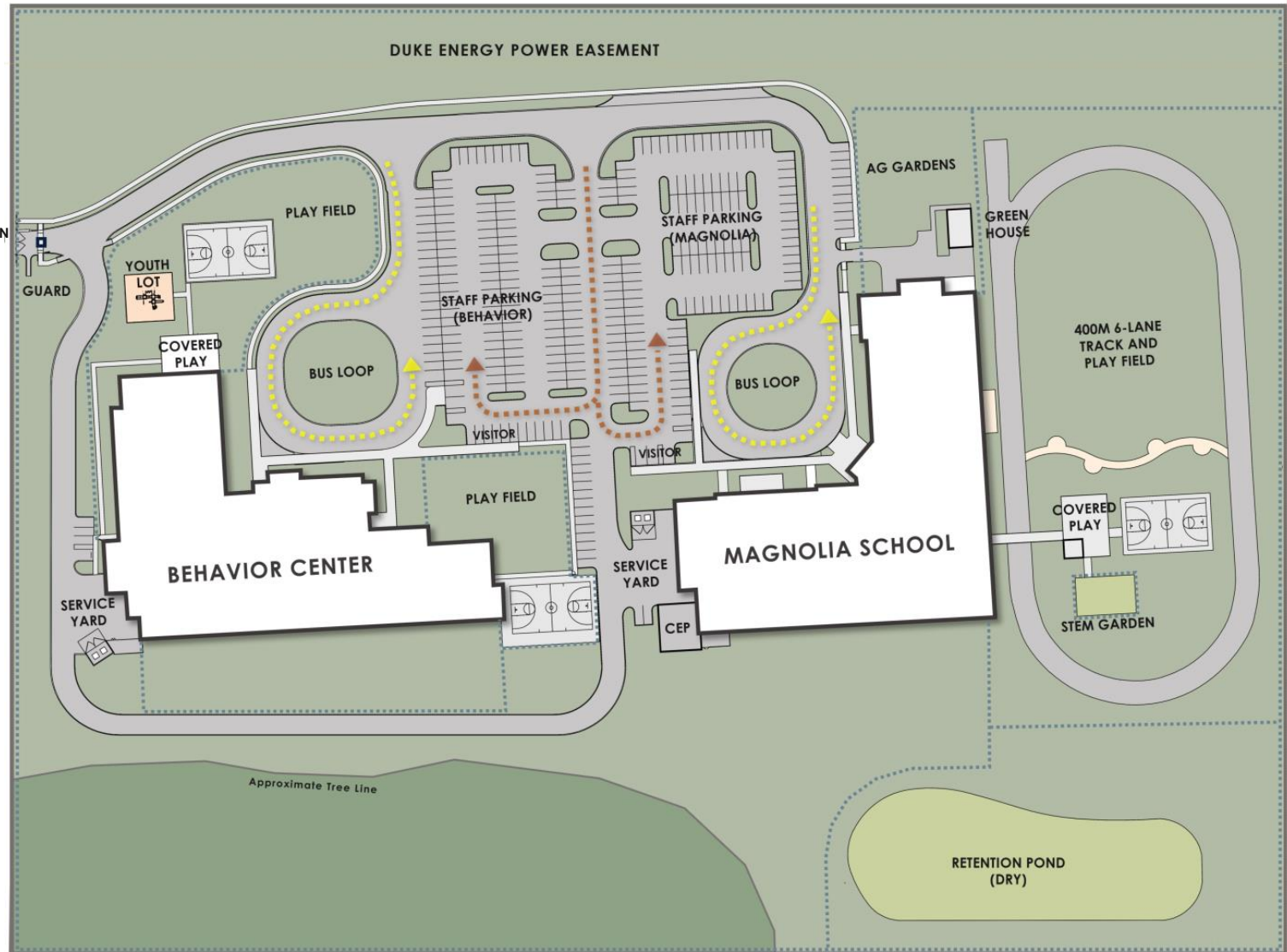
Building Area
70,600 Gross SF

BEHAVIOR CENTER
Grades K-12

Student Capacity
122 Students

Parking
161 Spaces

Building Area
67,100 Gross SF



Phasing Plan

PHASE 1

Jun/2019 – May/2020

1. Demolish Existing Playground and Covered Play
2. Construct New One-Story Magnolia School Building
3. Construct PE Facilities
4. Construct Service Access Drive

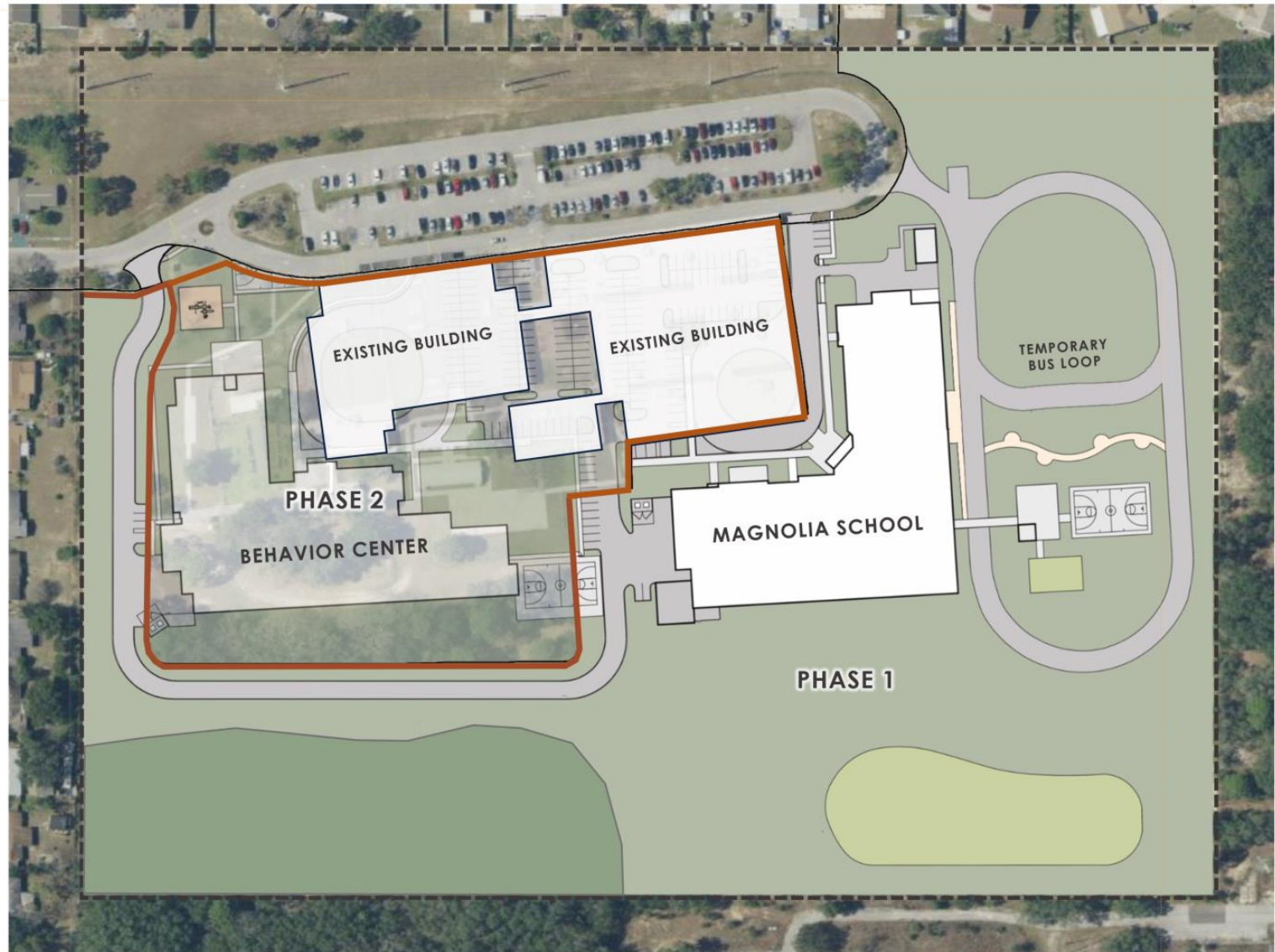


Phasing Plan

PHASE 2

Jun/2020 – May/2021

1. New Magnolia School is Complete
2. Demolish Existing Buildings
3. Construct New One-Story Behavior Center Building
4. Existing Parking to Remain in Use
5. Existing Track to Serve as Interim Bus Loop

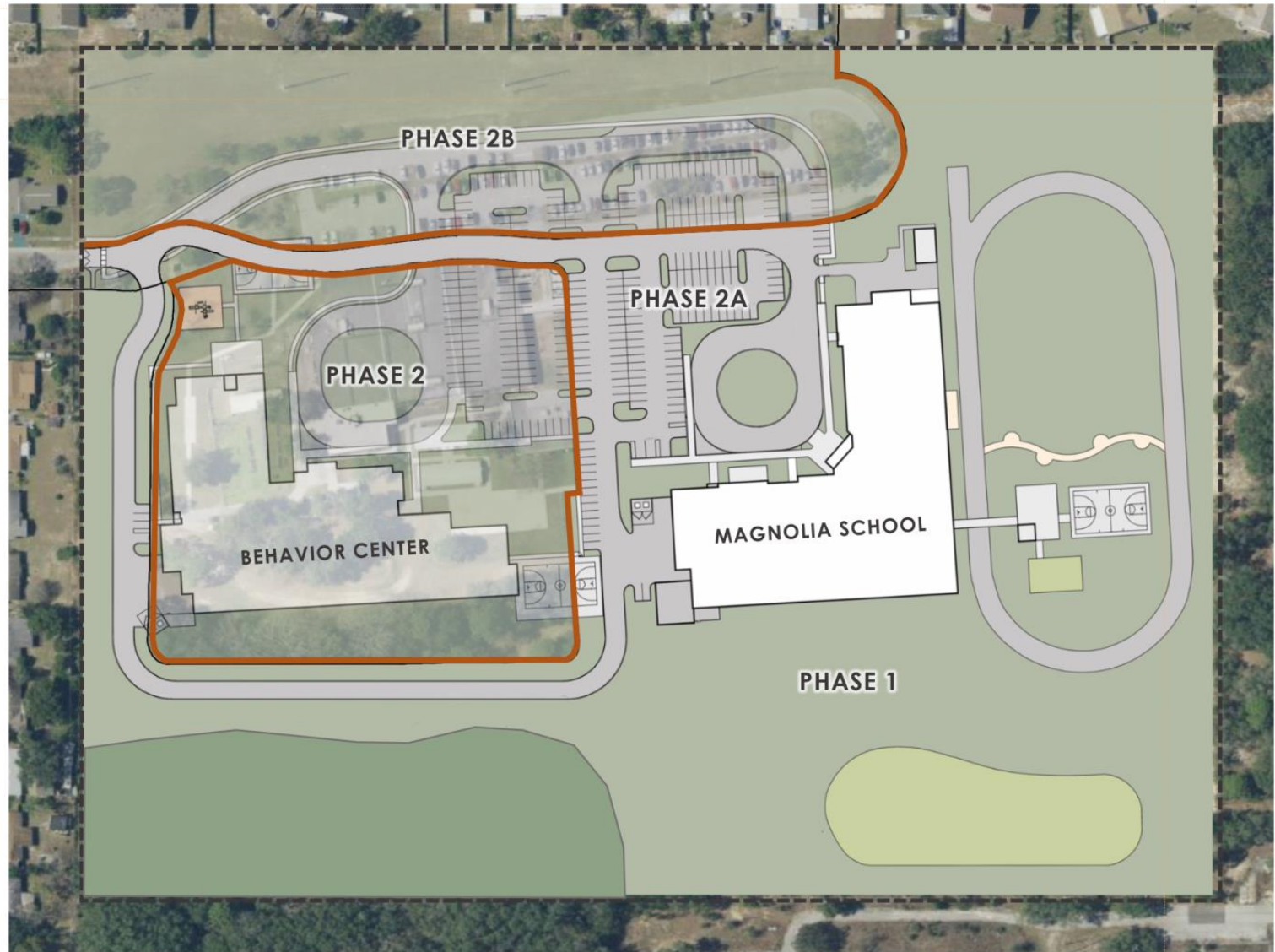


Phasing Plan

PHASE 2A

Fall 2020

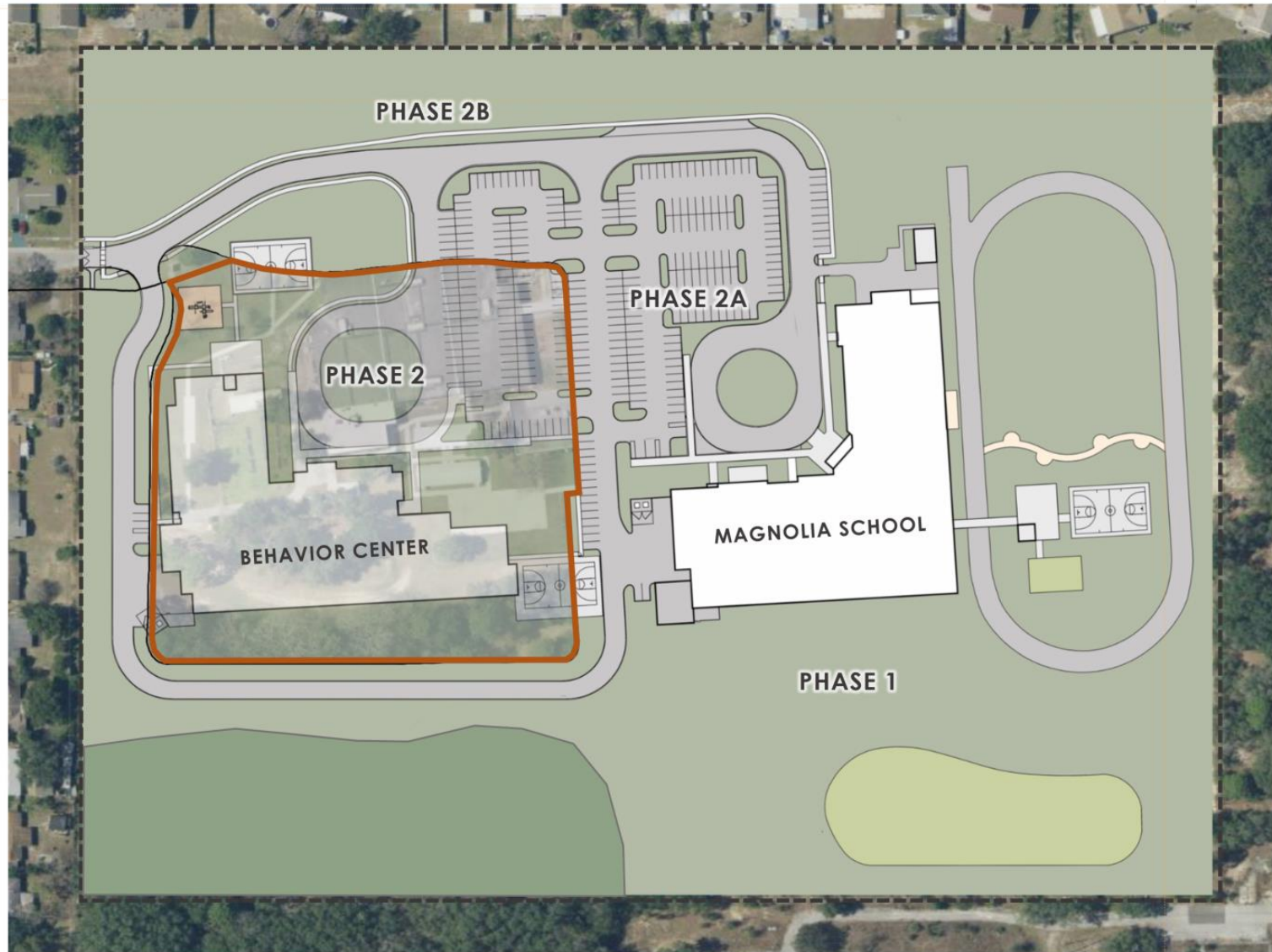
1. Complete Parking Area and Bus Loop for Magnolia School
2. Re-Construction of Existing Parking
3. Existing Entry Drive to Remain in Use During this Phase



Phasing Plan

PHASE 2B Spring 2021

1. New Parking and Drives Completed for Magnolia School

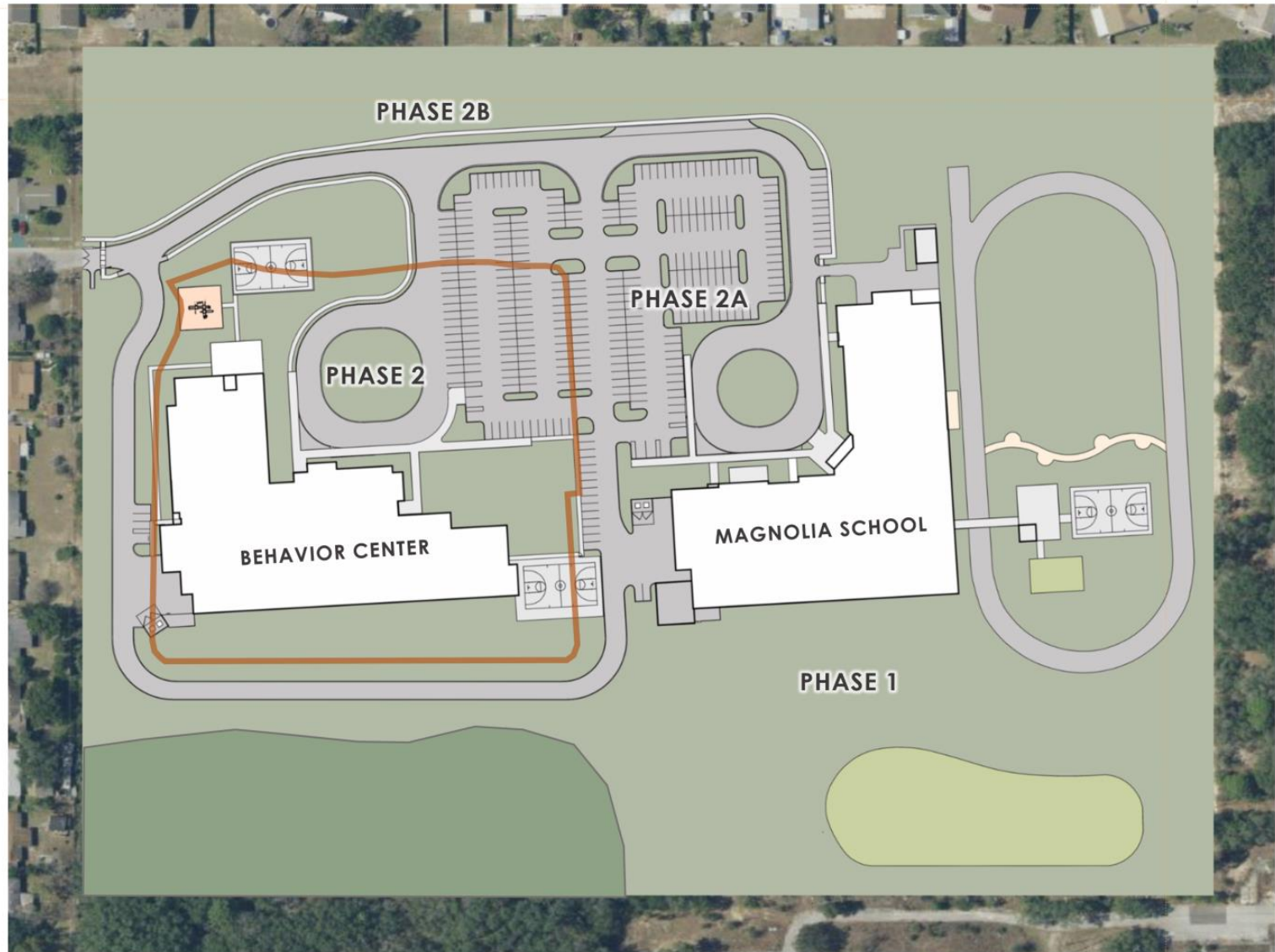


Phasing Plan

PHASE 2

Jun 2021

1. New Behavior School Complete
2. Parking and Drives Complete
3. PE Facilities Complete



Sustainability

- ESE Campus Consolidation is designed to meet Green Globes sustainable building standards
- **Sustainable Features include:**
 - **Site**
 - Native/low water landscaping – reduced water consumption
 - Low Impact Design (LID) storm water design
 - **Building**
 - 10% more energy efficient than ASHRAE 90.1 standard
 - High Efficiency Chillers (8% energy reduction)
 - Light colored roof reduces heat gain and improves energy efficiency
 - Energy Star rated equipment
 - Water saving toilets, faucets and fixtures
 - All general classrooms have daylighting
 - Over 75% of ALL spaces have daylighting
 - Fully automated building control system



ESE Campus Proposed Schedule

Milestones	Dates
Planning	January 2017 - March 2018
Design & Bid	May 2018 - April 2019
Construction: Magnolia School	May 2019 - May 2020
Construction: New Behavior Center	June 2020 - June 2021
New Magnolia School Opens	August 2020
New Behavior Center Opens	August 2021

Questions?

Facilities contact person for School Board District 5
Jessma Lambert
Facilities Director, Construction Planning
407-317-3700

Thank you to Orange County taxpayers for the ½ penny sales tax, which makes this construction possible.