

April 8, 2019

100% Design Community Meeting

ESE Campus Consolidation – Behavior Center

Please sign in on your mobile device: <http://communitymeeting.ocps.net/>



**Orange County
Public Schools**

ESE Campus Consolidation Update Behavior Center Meeting Agenda

April 8, 2019

Gateway at 5:00 p.m.

- Opening Remarks & Introduction of Public Officials – Kathleen “Kat” Gordon
- Acknowledgements & Introductions of Project Team – Jessma Lambert
- Project Update – Architect: Harvard Jolly Architects

Construction Manager: Charles Perry Partners, Inc.

- Questions and Answers
- Adjournment

Project Information

- Three Separate ESE Campuses
- School Information & Programs
- Master Site Plan and Phasing
- Floor Plans
- Building Elevations
- Similar Space Examples
- Sustainability
- Schedule

Three Separate ESE Campuses



Magnolia School

- 132 Middle and High School Students
- Circa 1970's & 80's Campus
- Residential Neighborhood
- **Severe Cognitive Disabilities**



Cherokee School

- 48 Elementary School Students
- Circa 1926 Campus
- Residential Neighborhood off 408
- **Severe Behavior Disorders**



Gateway School

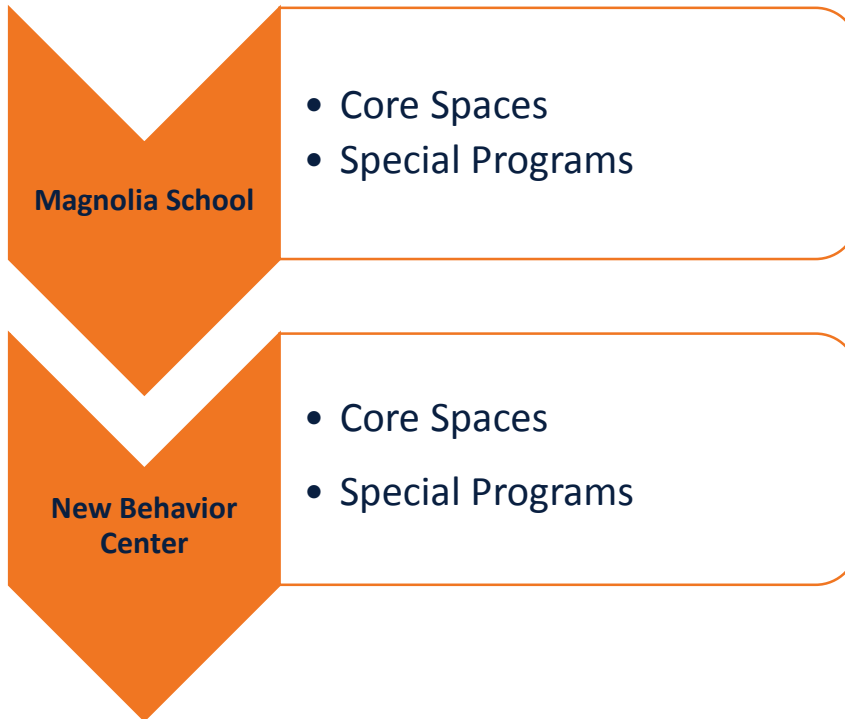
- 59 Middle and High School Students
- Circa 1961 Campus
- Industrial Park Location
- **Severe Behavior Disorders**

Current Programs

Priority List	Campus	School Information	Programs
113	Magnolia School	<ul style="list-style-type: none"> • Profound Mental Handicaps • Special Medical or Behavioral needs • Elementary School Gifted Magnet 	BRIDGES (CBVE) <ul style="list-style-type: none"> • Student Services • Agriculture • Recycling • Culinary Arts • Commercial Laundry • Hospitality (Hotel) • Custodial (w/Recycling)
112	Cherokee School	<ul style="list-style-type: none"> • Behavior Disorders 	<ul style="list-style-type: none"> • K-5 Program
131	Gateway School	<ul style="list-style-type: none"> • Severe Behavior Disorders • Grades 6 thru 12 • Project Based Learning • Vocational Academies 	<ul style="list-style-type: none"> • Digital Design • Culinary Arts • Patient Care • Industrial Arts

Planned Program

Site Amenities

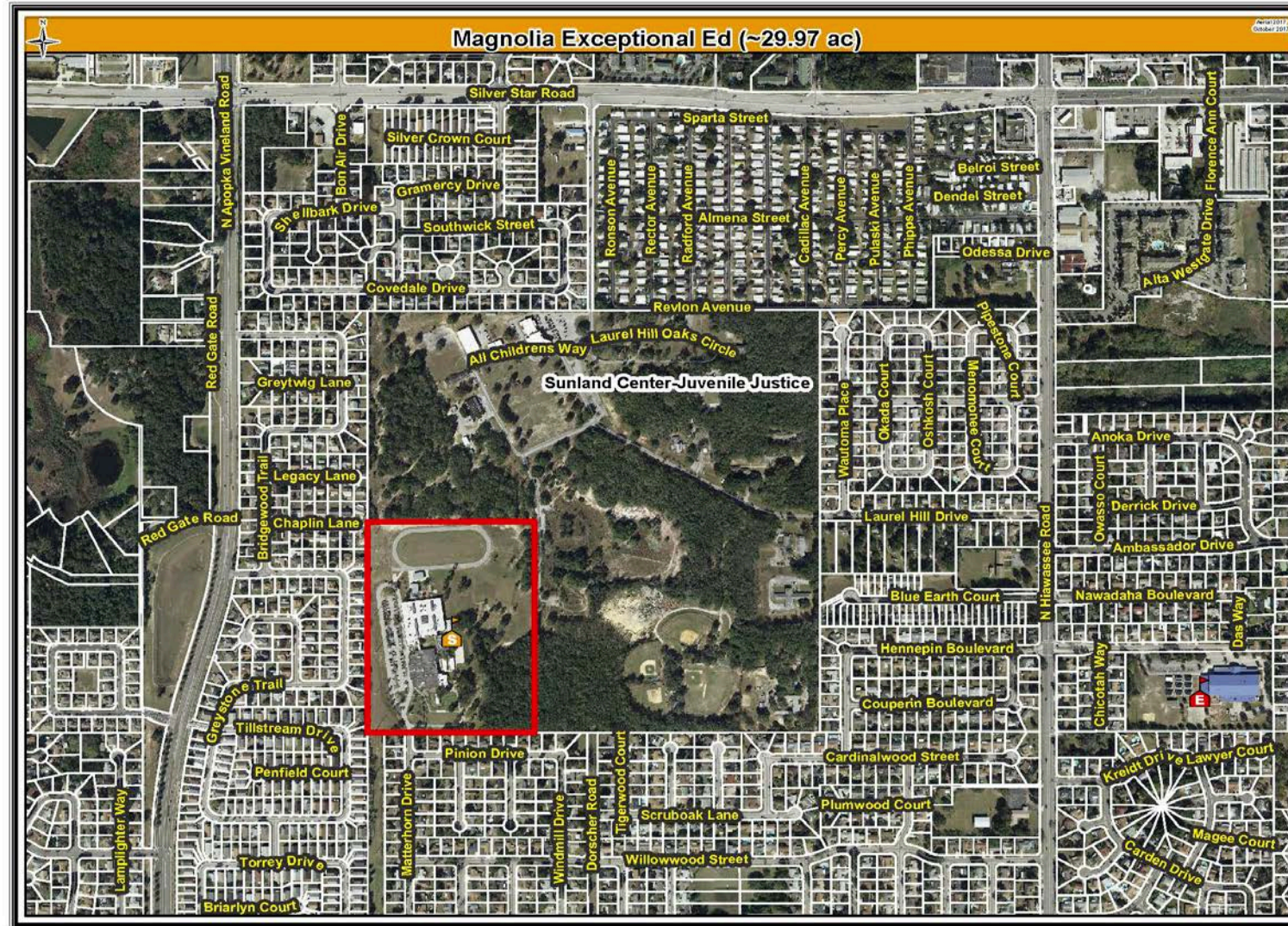


School	Planned Enrollment	Parking
Magnolia	157 Middle, High and BRIDGES (18-22) Students	145
New Behavior Center	134 K-12 Students	173
Total	291	318

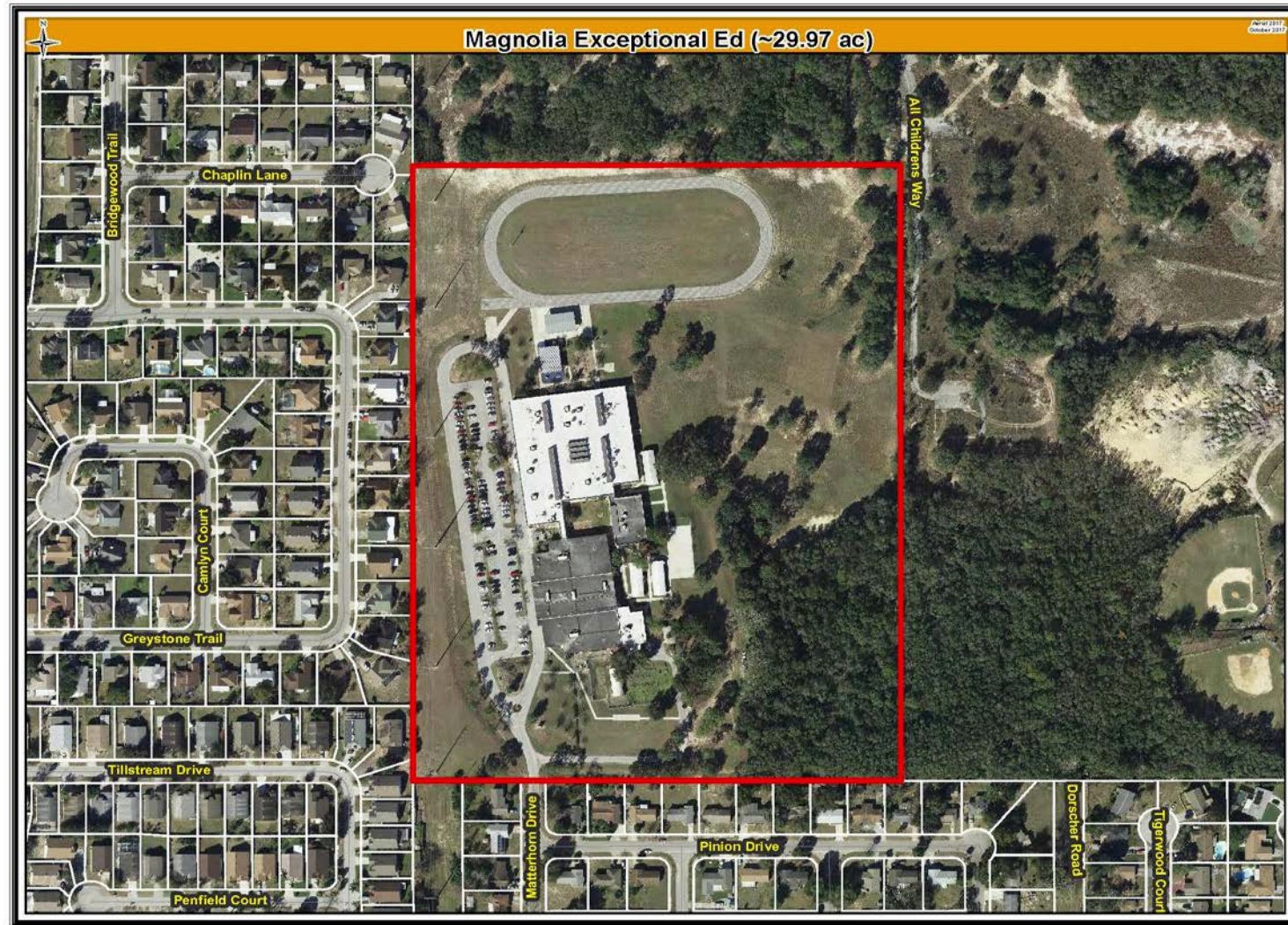
Gateway/Cherokee Behavior Center Program

Core Spaces	Special Programs/Vocational
ESE Self Contained Classrooms	Sensory/De-Escalation Room
Science Classroom/Labs	Speech
Drama/Music/Art	Group Sessions
Covered Play Pavilion	Digital Design
Playground	Culinary Arts
Media Center	Patient Care
Dining Room/Kitchen/Multipurpose	Industrial Arts

Site Location Analysis



Site Plan: Existing



Site Plan

Project Data

Site Area
30.02 Acres

Magnolia School
Grades 6-12, Bridges

Student Capacity
157 Students

Building Area
70,674 Gross SF

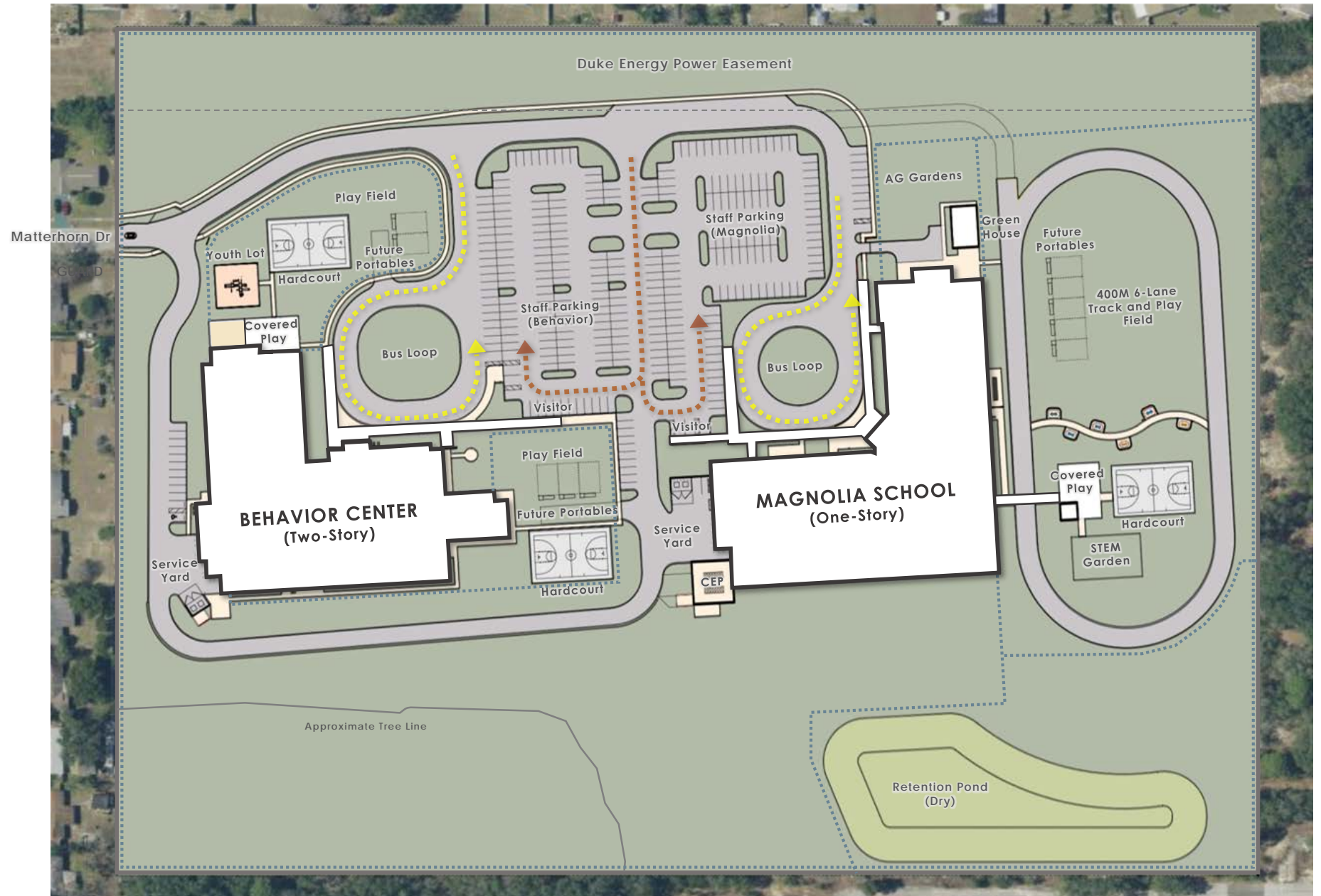
Parking Provided
145 Spaces

Behavior Center
Grades K-12

Student Capacity
134 Students

Building Area
74,713 Gross SF

Parking Provided
173 Spaces



Phase 1

(Jun/2019 – May/2020)

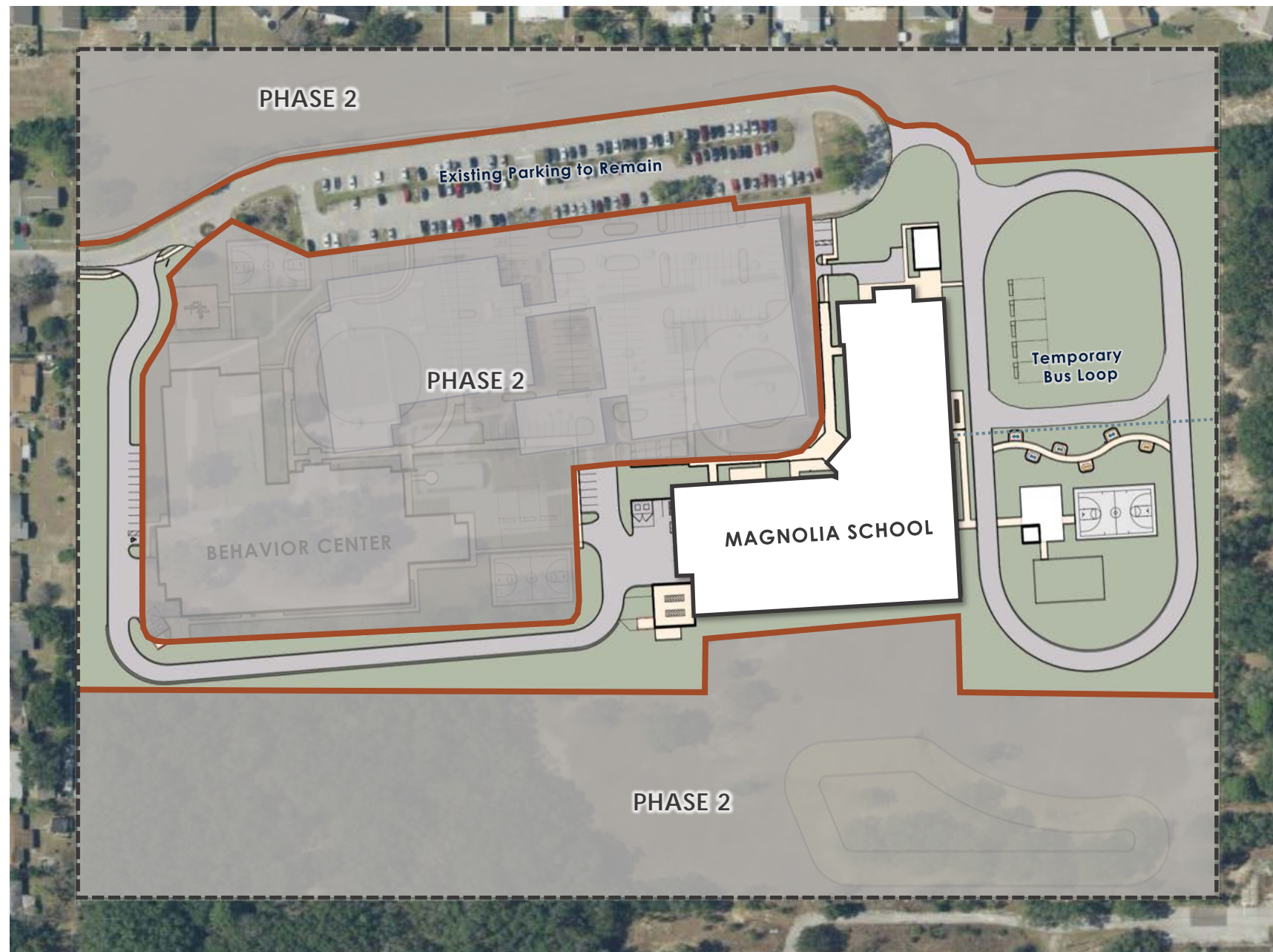
1. New Magnolia School including Greenhouse and Central Plant
2. New Covered Play and PE Facilities
3. Temporary Paved Bus Access and Fencing
4. Temporary Canopy
5. Site Work including Pond



Phase 2

(Jun/2020 – May/2021)

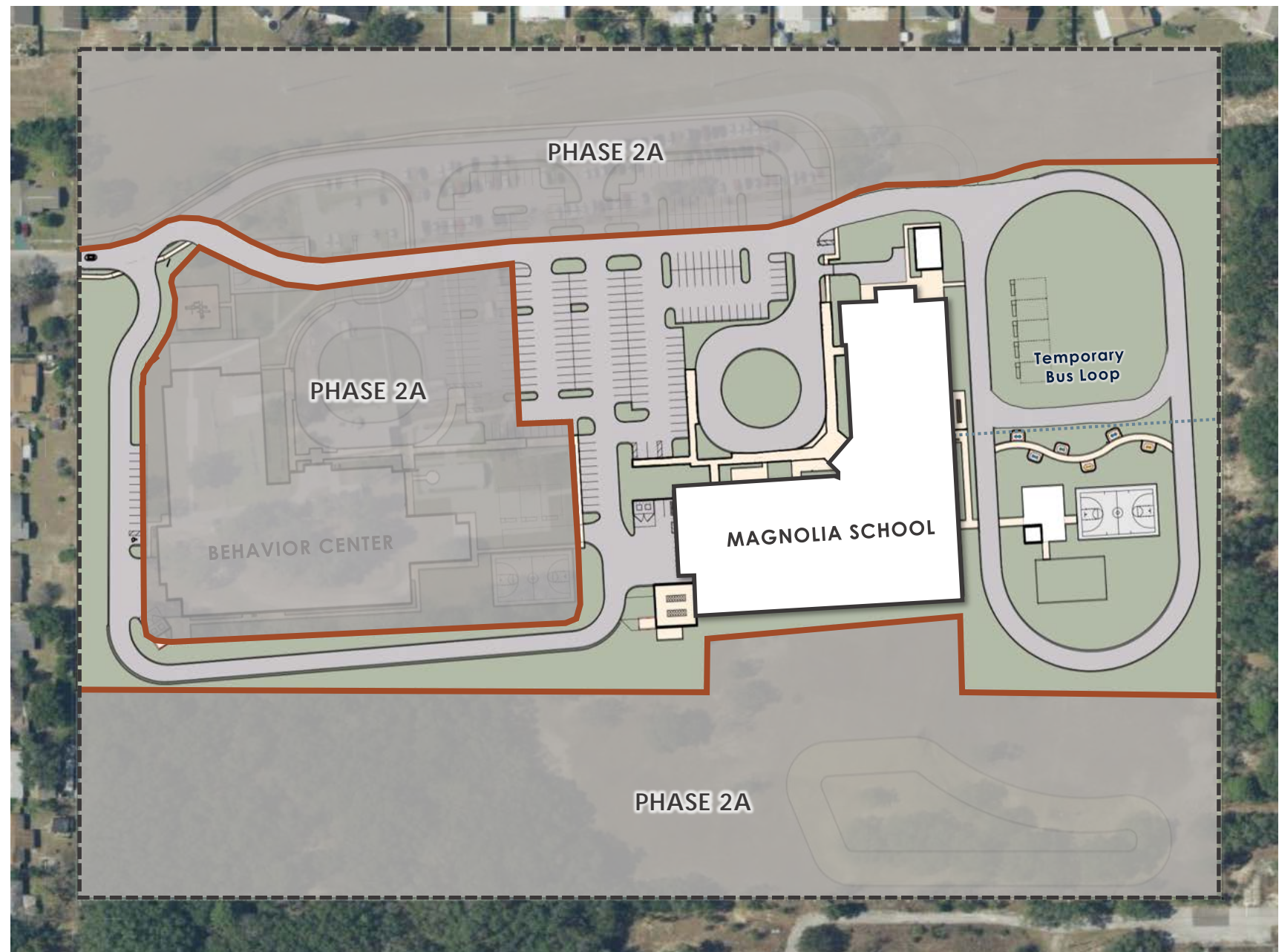
1. New Magnolia School is Complete
2. Existing Parking to Remain for Magnolia School
3. Track to be used as Temporary Bus Loop
4. Demolition of Existing Magnolia School
5. New Behavior School Constructed
6. New Parking and Drives



Phase 2A

(June 2020 – Jan 2021)

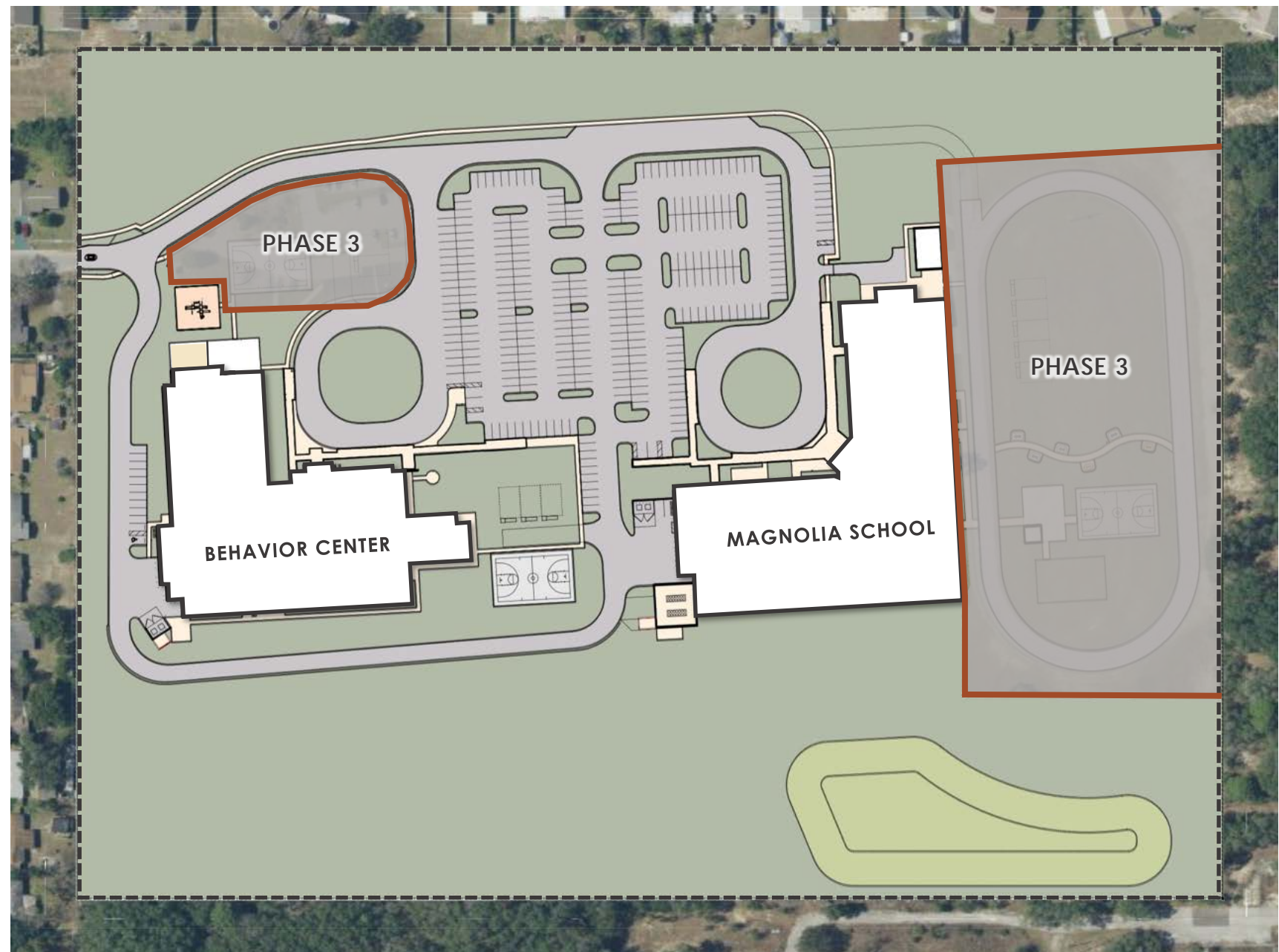
1. Complete Additional Parking and Bus Loop for Magnolia School
2. Re-Construct Existing Parking and Drives



Phase 3

(Summer 2021)

1. Behavior School Complete
2. Construct PE Facilities for Behavior
3. Re-Construction of Track for Magnolia School



Birds Eye View



Building Elevations



Similar Space Examples



Admin Reception



Media Center – K5

Similar Space Examples



TV Studio



K5 Science

Similar Space Examples



Covered Play – K5



Playground – K5

Similar Space Examples



Science 6-12



Art 6-12

Similar Space Examples



Media Center 6-12



Kitchen

Similar Space Examples



Culinary Arts 6-12



Industrial Arts 6-12

Similar Space Examples



Hardcourt



Half-Court Gym 6-12

Sustainability

- ESE Campus Consolidation is designed to meet Green Globes sustainable building standards

- **Sustainable Features include:**

- **Site**

- Native/low water landscaping – reduced water consumption
- Low Impact Design (LID) storm water design

- **Building**

- 10% more energy efficient than ASHRAE 90.1 standard
- High Efficiency Chillers (8% energy reduction)
- Light colored roof reduces heat gain and improves energy efficiency
- Energy Star rated equipment
- Water saving toilets, faucets and fixtures
- All general classrooms have daylighting
- Over 75% of ALL spaces have daylighting
- Fully automated building control system



ESE Campus Proposed Schedule

Milestones	Dates
Planning	January 2017 - March 2018
Design & Bid	May 2018 - April 2019
Construction: Magnolia School	May 2019 - May 2020
Construction: New Behavior Center	June 2020 - August 2021
New Magnolia School Opens	August 2020
New Behavior Center Opens	August 2021

Questions and Answers

Facilities contact person for School Board District 5
Jessma Lambert
Facilities Director, Construction Planning
407-317-3700

Thank you to Orange County taxpayers for the ½ penny sales tax, which makes this construction possible.