

December 7th, 2020, 5:30 PM

100% Design Community Meeting

Site MS 132-M-W-4

Welcome! This meeting will begin shortly.



**Orange County
Public Schools**

Site MS 132-M-W-4

Meeting Agenda

December 7th, 5:30PM

- Welcome – School Board Member, Vice Chair Pam Gould
- Introductions – Lauren Roth
- Project Update
 - Architect: HuntonBrady Architects
 - Construction Manager: Welbro Construction
- Questions and Answers
- Adjournment

***Welcome Message from
District 4 Board Member
Pam Gould***



***Introductions by Senior manager,
Facilities Communications***

Lauren Roth



Rezoning Process

School Board Policy JC

Step 1 - Superintendent commences rezoning

Step 2 - Calendar (Timeline) developed

Step 3 - Calendar shared

Step 4 - Research, data collection and meetings with internal stakeholders

Step 5 - Community Meeting(s) *Expected Spring 2021*

Step 6 - Rule Development Workshop

Step 7 - Public Hearing

Step 8 - Storage of materials

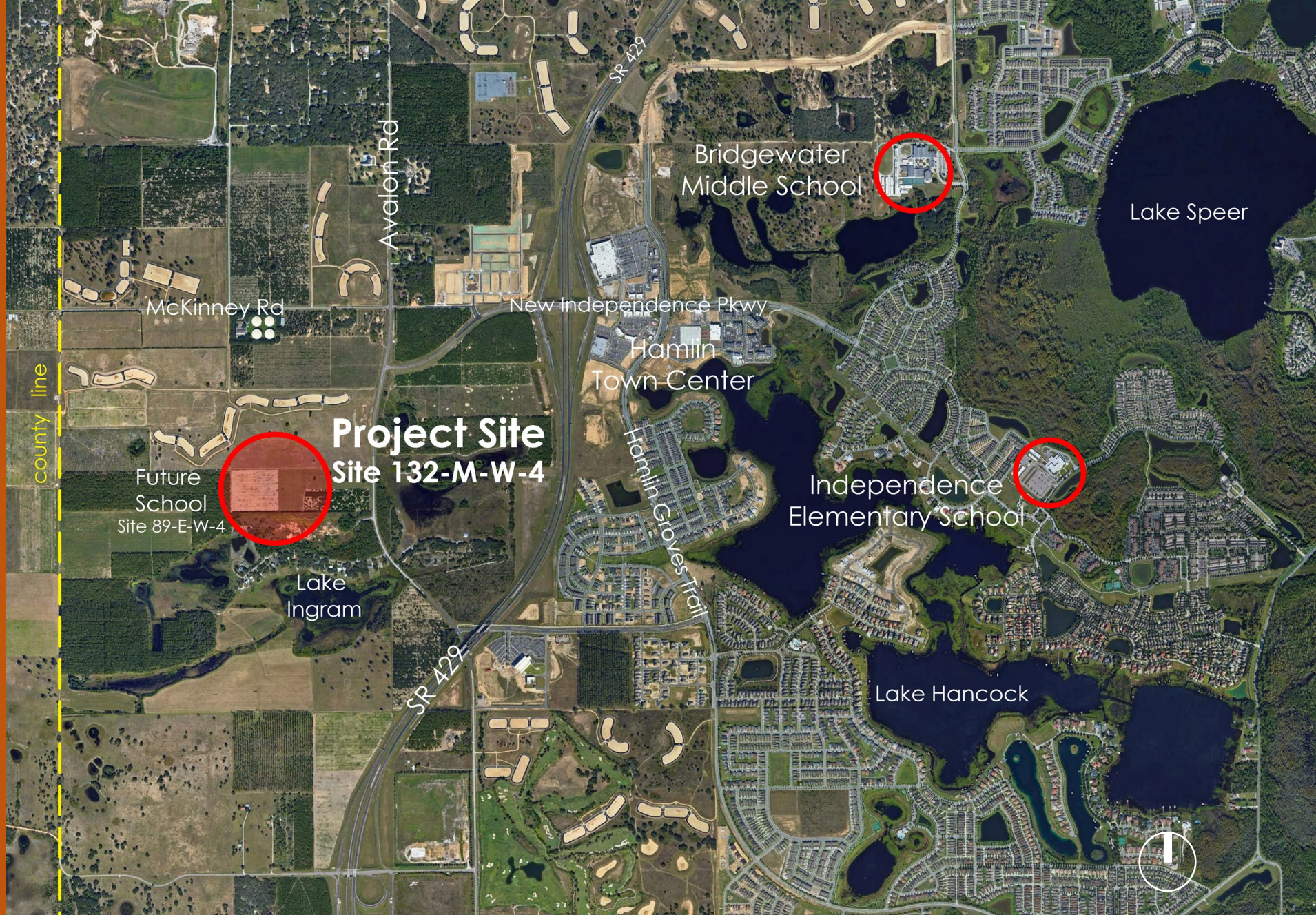
Aerial Map

New Campus on new site to meet District Standards for Middle Schools:

- Prototypical Design

Enhanced Learning Environment:

- Latest Technology
- Planned Site Circulation
- Safety
- Community Asset



Vicinity Map

New Campus on new site to meet District Standards for Middle Schools:

- Prototypical Design

Enhanced Learning Environment:

- Latest Technology
- Planned Site Circulation
- Safety
- Community Asset



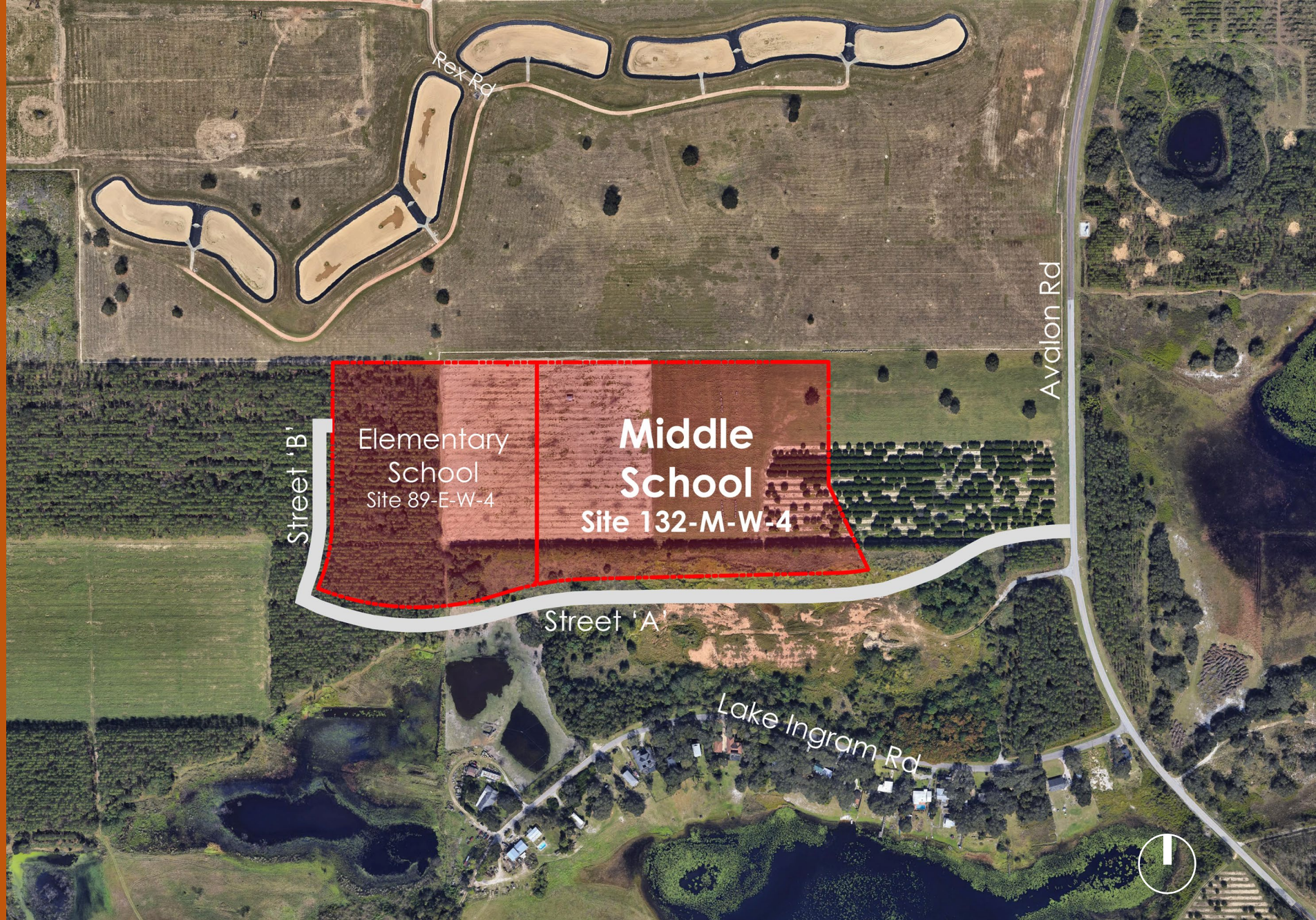
Vicinity Map

New Campus on new site to meet District Standards for Middle Schools:

- Prototypical Design

Enhanced Learning Environment:

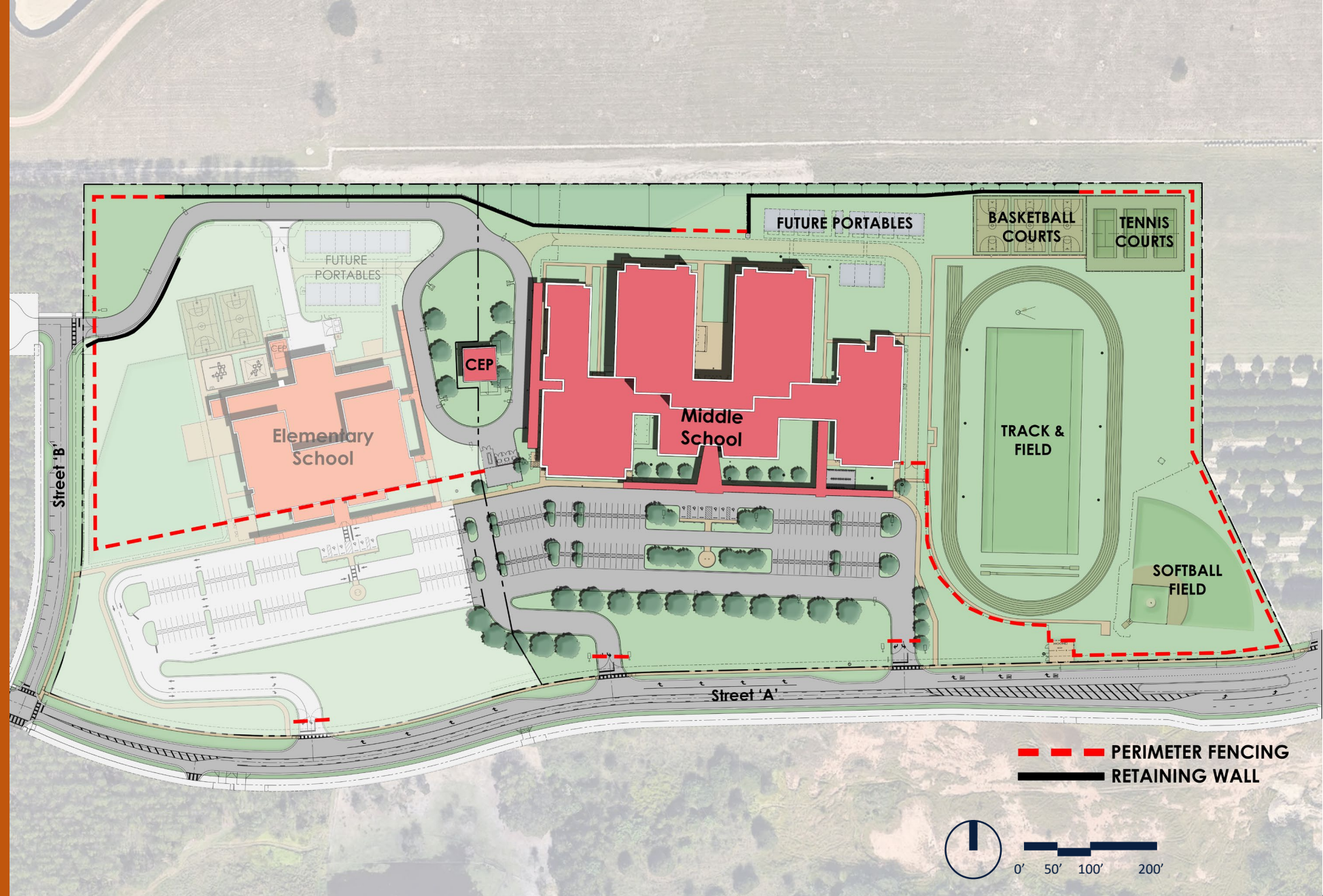
- Latest Technology
- Planned Site Circulation
- Safety & Security
- Community Asset



Site Plan

Site

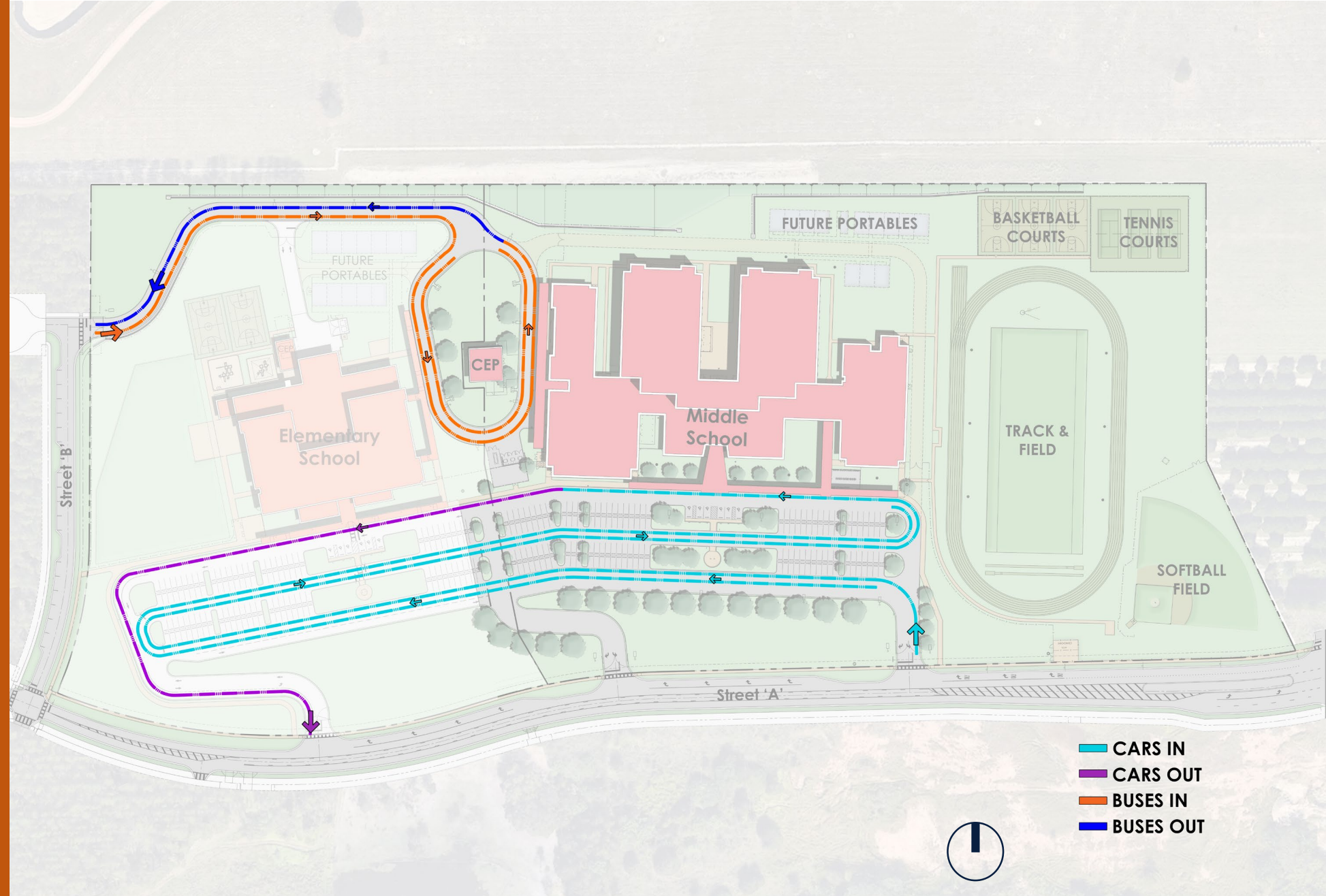
- 21 Acre Middle School Site
- Elementary School Site Adjacent to Middle School
- Separate Bus and Parent Entry Driveways
- Separate Bus and Parent Loading
- Joint Bus Loop
- Separate Bus Drop-Off ES and MS
- Car Queue
- Service Loop
- Site Parking Spaces
- Play Fields / Courts
- Future Portables



Example Vehicle/Bus Drop-off

☑ Site Circulation

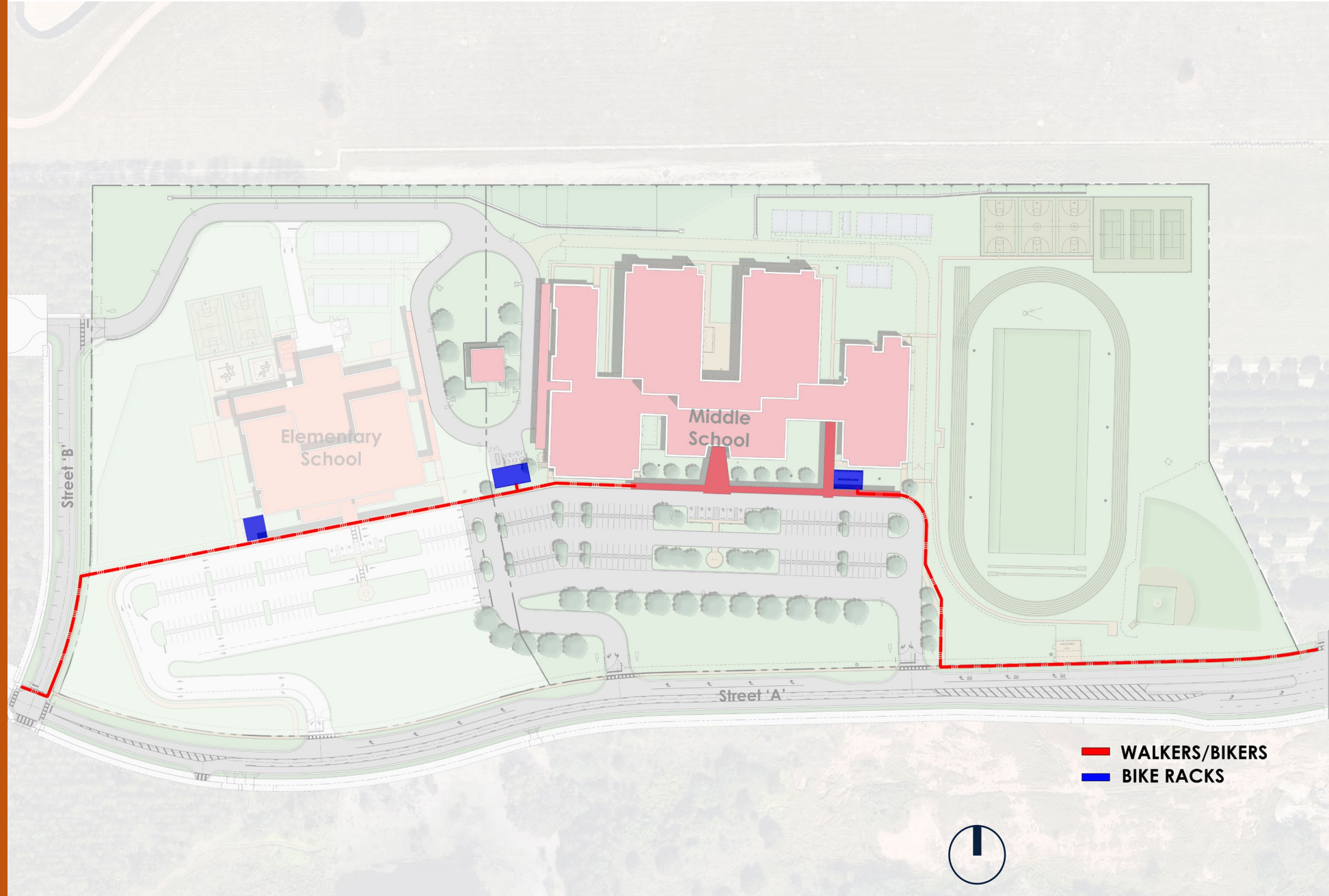
- On-site car stacking
Queue for 291 cars
- On-site parking
170 parking space
- Bus loop
25 bus capacity
- Service Loop



Example Pedestrian/ Bike

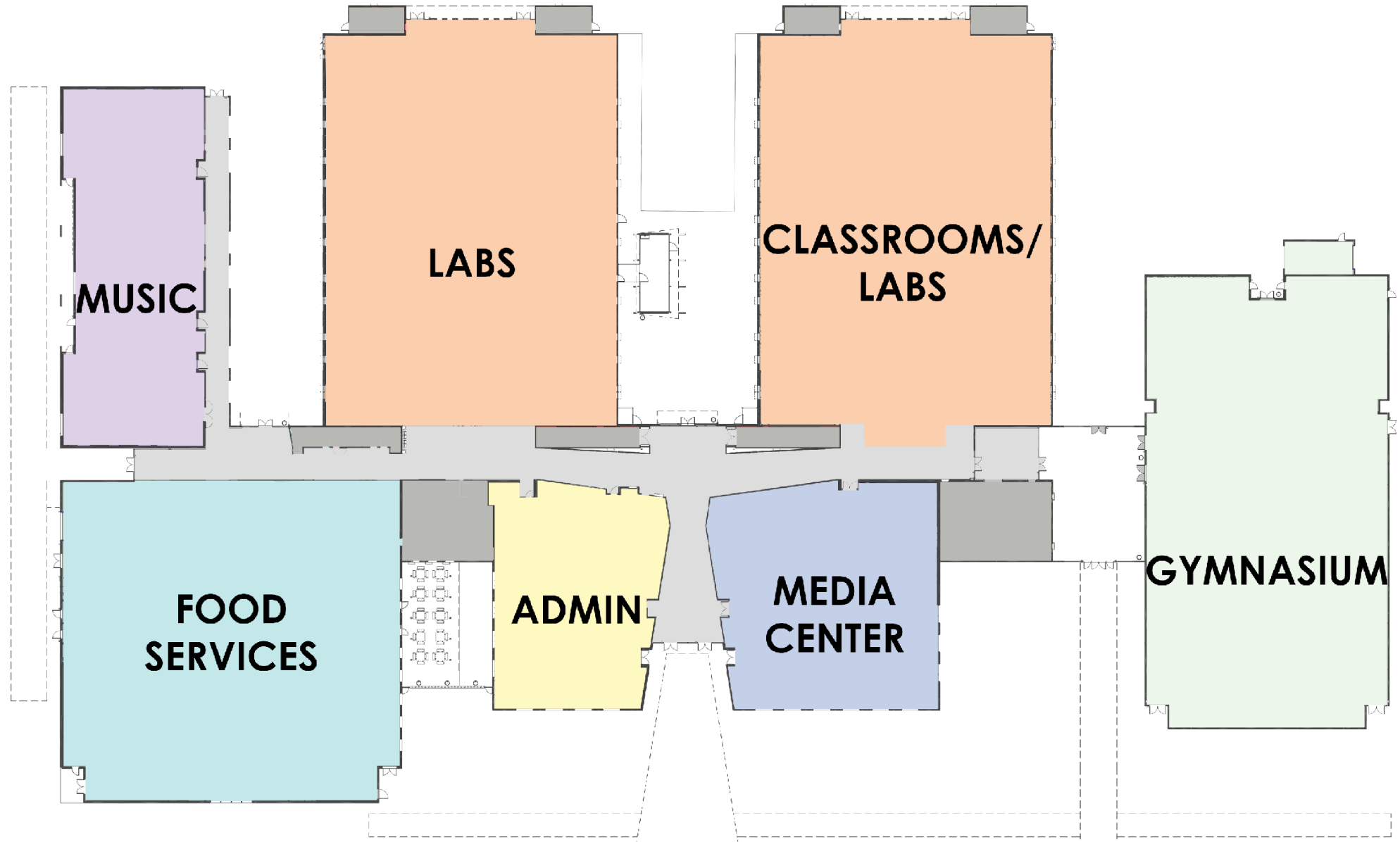
☑ Site Circulation

- Covered walkways
- Safe pedestrian paths
- Bike racks with
172 Bike capacity
with additional 102 bike
expansion space



LEGEND

- Food Services
- Administration
- Physical Education
- Music
- Classrooms
- Media Center
- Support Areas

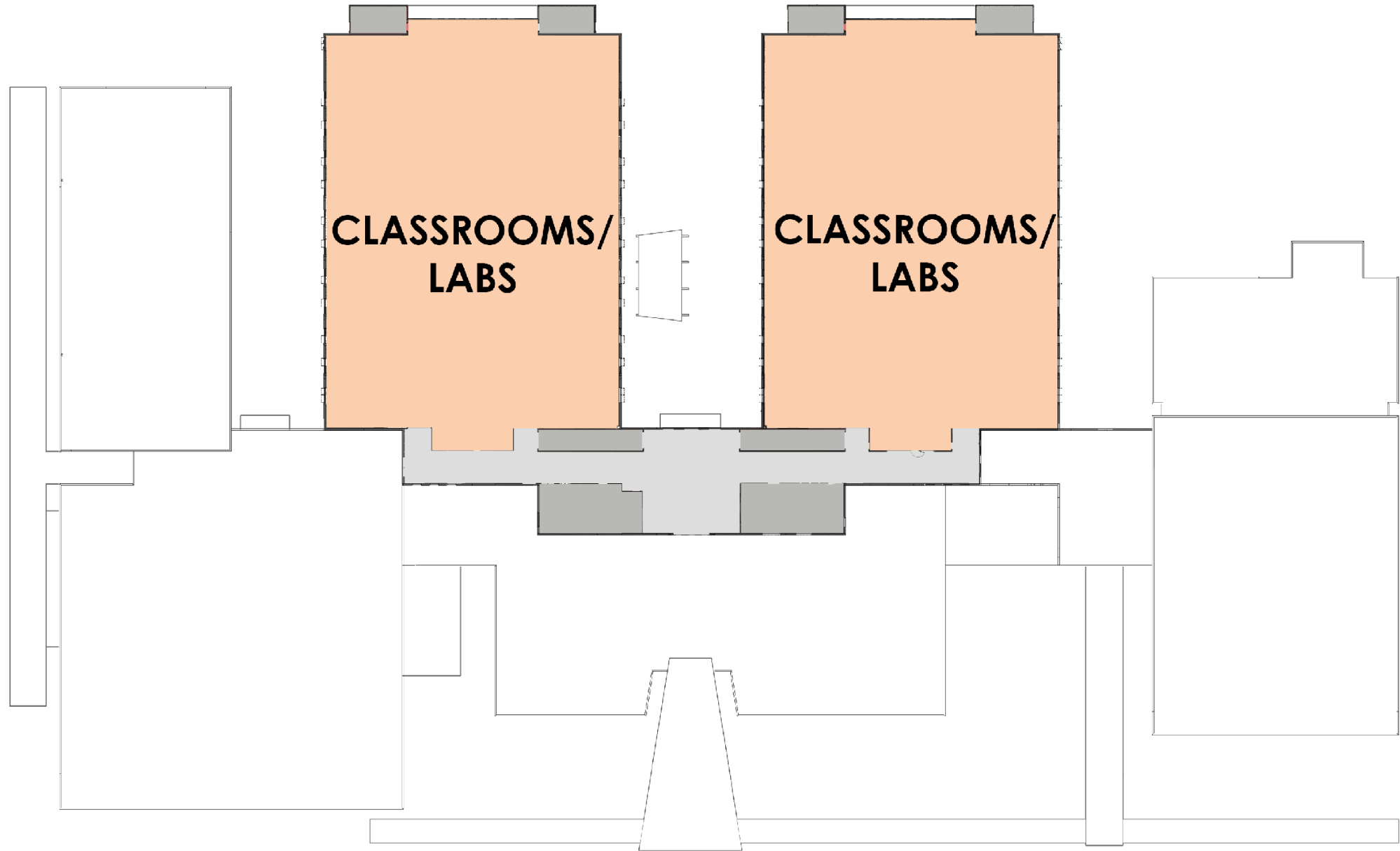


FLOOR PLAN - LEVEL 1



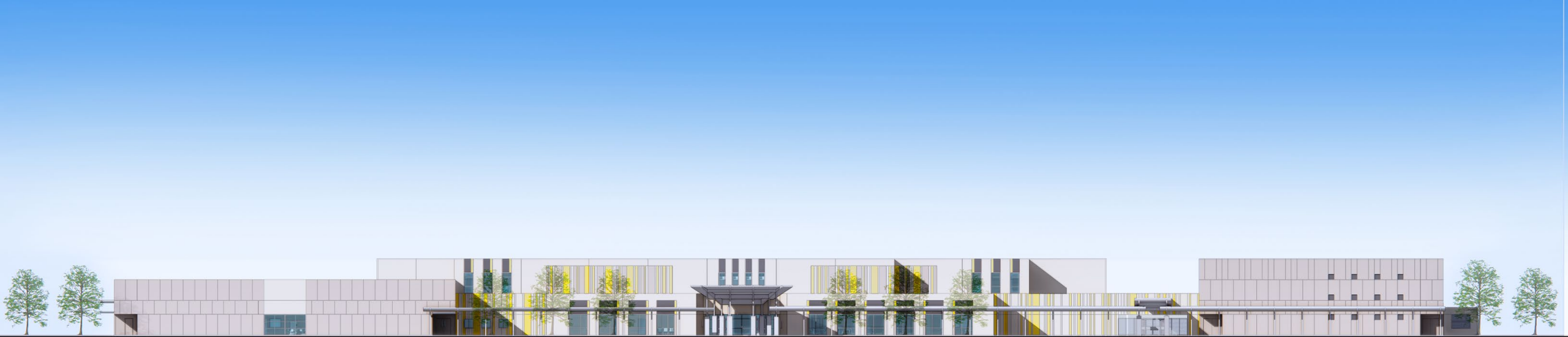
LEGEND

- Classrooms
- Support Areas

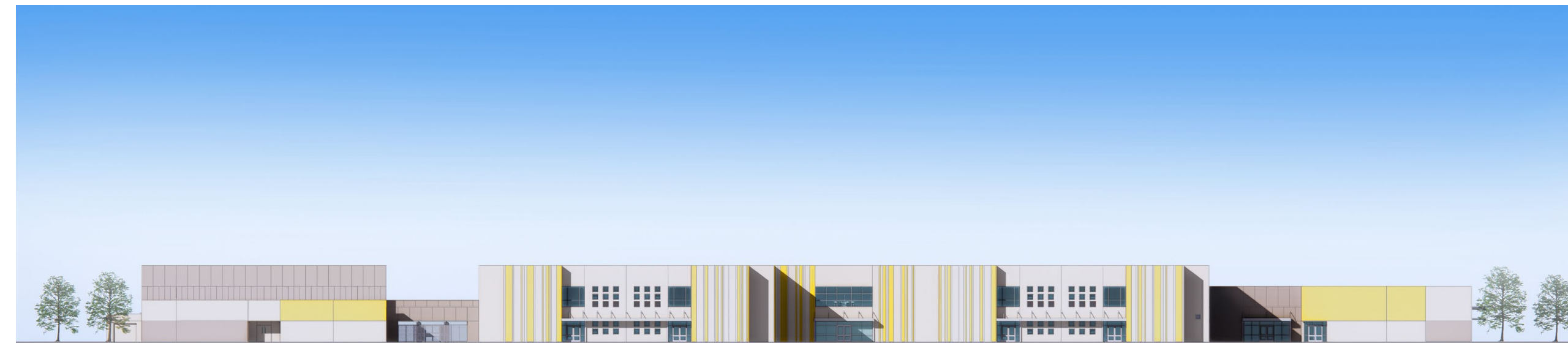


FLOOR PLAN - LEVEL 2





SOUTH ELEVATION - ENTRY



NORTH ELEVATION - ENTRY



EAST ELEVATION- GYMNASIUM



WEST ELEVATION- BUS DROP-OFF







main entrance

Site 132-M-W-4



Example Classroom

☑ Classroom

General Classrooms will include:

- Marker board / Tack boards
- Audio Enhancement
- Interactive Flat Panel
- Teacher computer
- Millwork with sink and storage cabinets



Example Technology

☑ Technology : Campus

The technology package will include:

- Teacher computer
- Student laptops
- Interactive Flat Panel
- White boards
- Skills labs (Computer & Science)
- Wireless Access
- Audio Enhancement
- Collaborative Spaces



Example Technology Resource Center

☑ Specialty Classrooms

- Flexible/Adaptable seating
- Smart Technology
- Daylight



Example Music Suite

☑ Technology : Campus

The Music Suite will include:

- Orchestra Classroom
- Vocal Classroom
- Band Classroom
- Practice Booths



Example Media Center

☑ Media Center

The Media Center will include:

- Genius bar
- Seating for large groups
- CCTV studio
- Audio Enhancement



Example Multi-Purpose Room

☑ Cafeteria

The Cafeteria will include:

- Kitchen
- Six Serving Lines
- Teacher Dining
- Elevated Stage
- Extended Day Office
- Restrooms
- Outdoor dining



Example Science Classroom

☑ Specialty Classrooms

- Science Classroom
- Science-grade cabinets
- Faucets provided at student workstations and teacher demonstration desk
- Resin Countertops



Example Administration / Lobby

☑ Administration

The administrative area includes:

- Single point of entry during school hours
- Lobby
- Administrative offices, workroom & storage
- Large conference room
- Clinic
- Teacher planning



Example Athletics

☑ Physical Education

Physical Education will include:

- 1,096 Capacity Gym
- Showers and Lockers
- Indoor Basketball Court
- PE Office and storage
- Tennis Courts
- Basketball Courts
- 400m track
- Soccer/Multipurpose athletic field
- LED Lighting



Sustainability



Site:

- Low Impact Design (LID) stormwater design
- Native/low water plants – reduce water consumption

Building:

- High Efficiency Chillers (8% energy reduction)
- Light colored roof to reduce heat gain and improves energy performance
- Energy Star rated equipment
- Water saving toilets, faucets, and fixtures
- All general classrooms have daylighting
- Over 85% of ALL spaces have daylighting
- Thermal efficient windows/glazing
- Fully automated building controls system 10% more energy

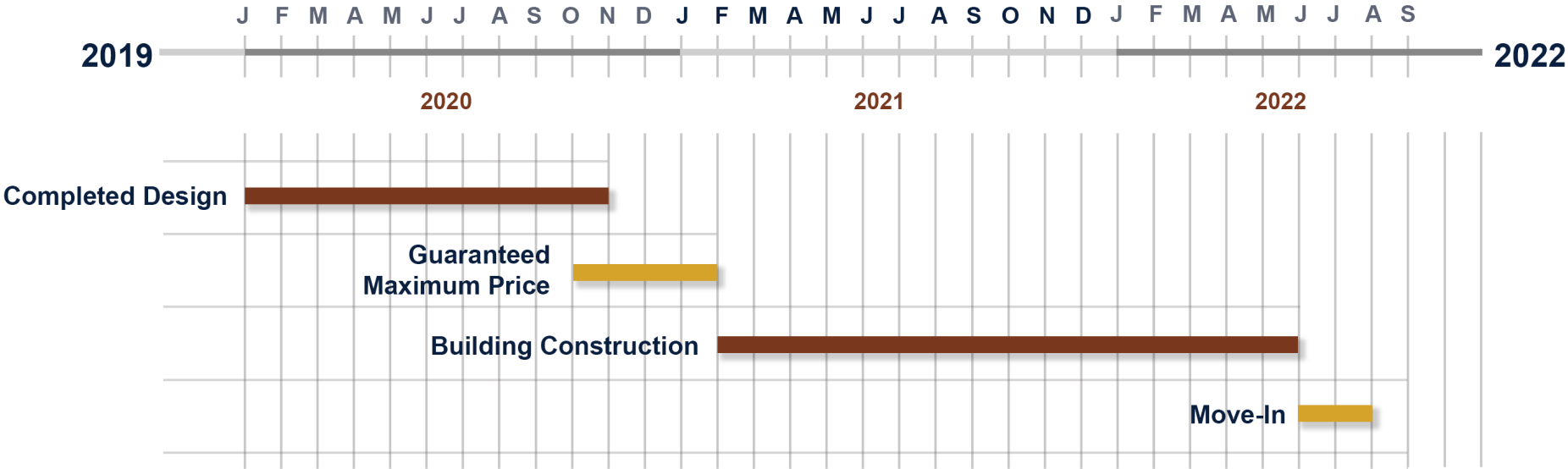


Previous OCPS School Prototypes

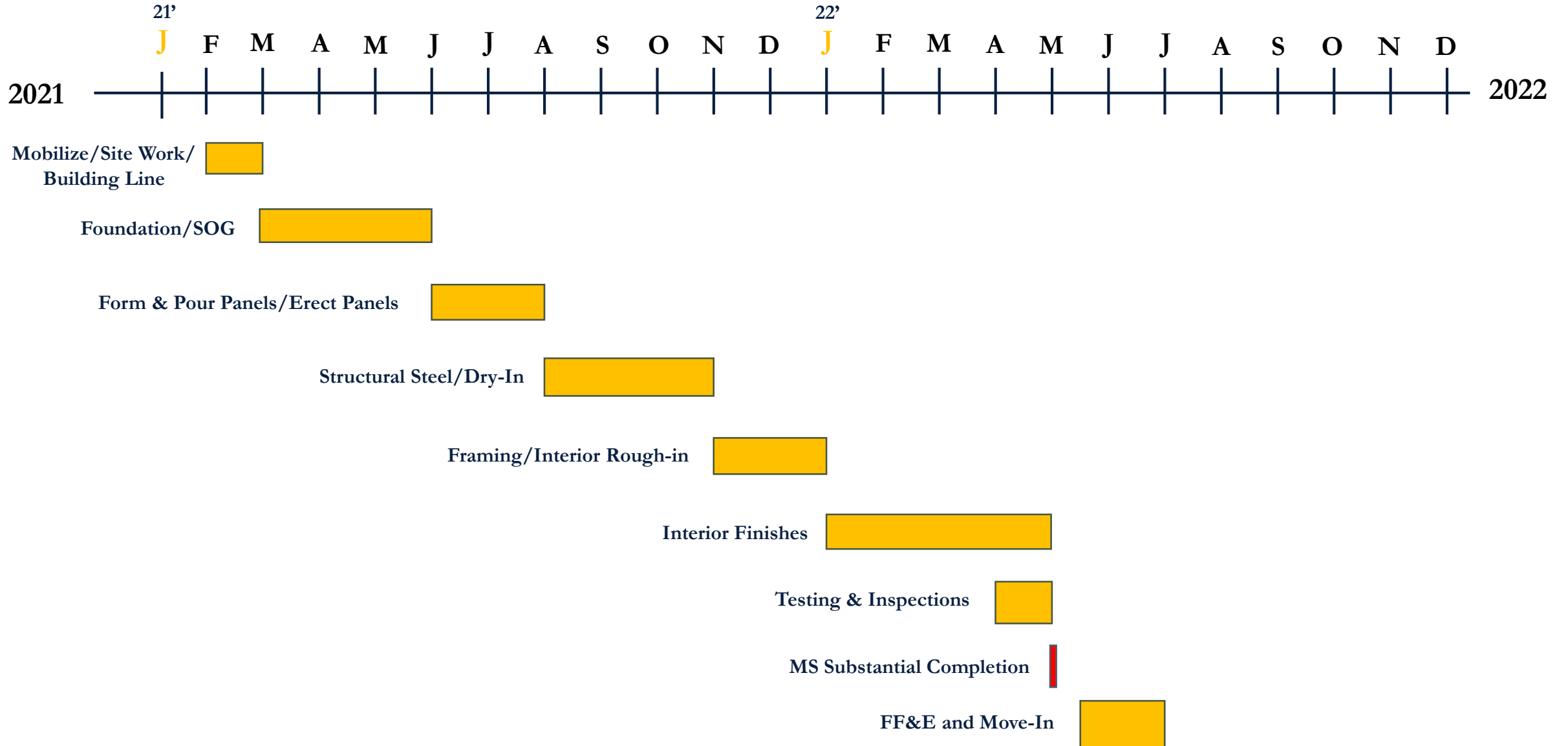
- Timber Springs Middle School
- Carver Middle School



Design & Construction Schedule



Design & Construction Schedule



**Elementary School Site
and Parking Lot**

Office Location

Crane Path around Building for Erection

Temporary Access Road to site off Avalon Road



Questions & Answers