

July 16, 2020

60% Design Community Meeting

Site 90-K8-N-7

Welcome! This meeting will begin shortly.



**Orange County
Public Schools**

Site 90-K8-N-7

60% Design Meeting Agenda

July 16, 2020, 6:00 PM

- Welcome - School Board Member Melissa Byrd
- Introductions - Lauren Roth, Facilities Communications
- Project Update - Architect: Zyscovich Architects
Contractor: Wharton-Smith
- Questions/Comments

***Welcome Message from
District 7 Board Member
Melissa Byrd***



***Introductions by Senior manager,
Facilities Communications***

Lauren Roth



Rezoning Process

School Board Policy JC

Step 1 - Superintendent commences rezoning

Step 2 - Calendar (Timeline) developed

Step 3 - Calendar shared

Step 4 - Research, data collection and meetings with internal stakeholders

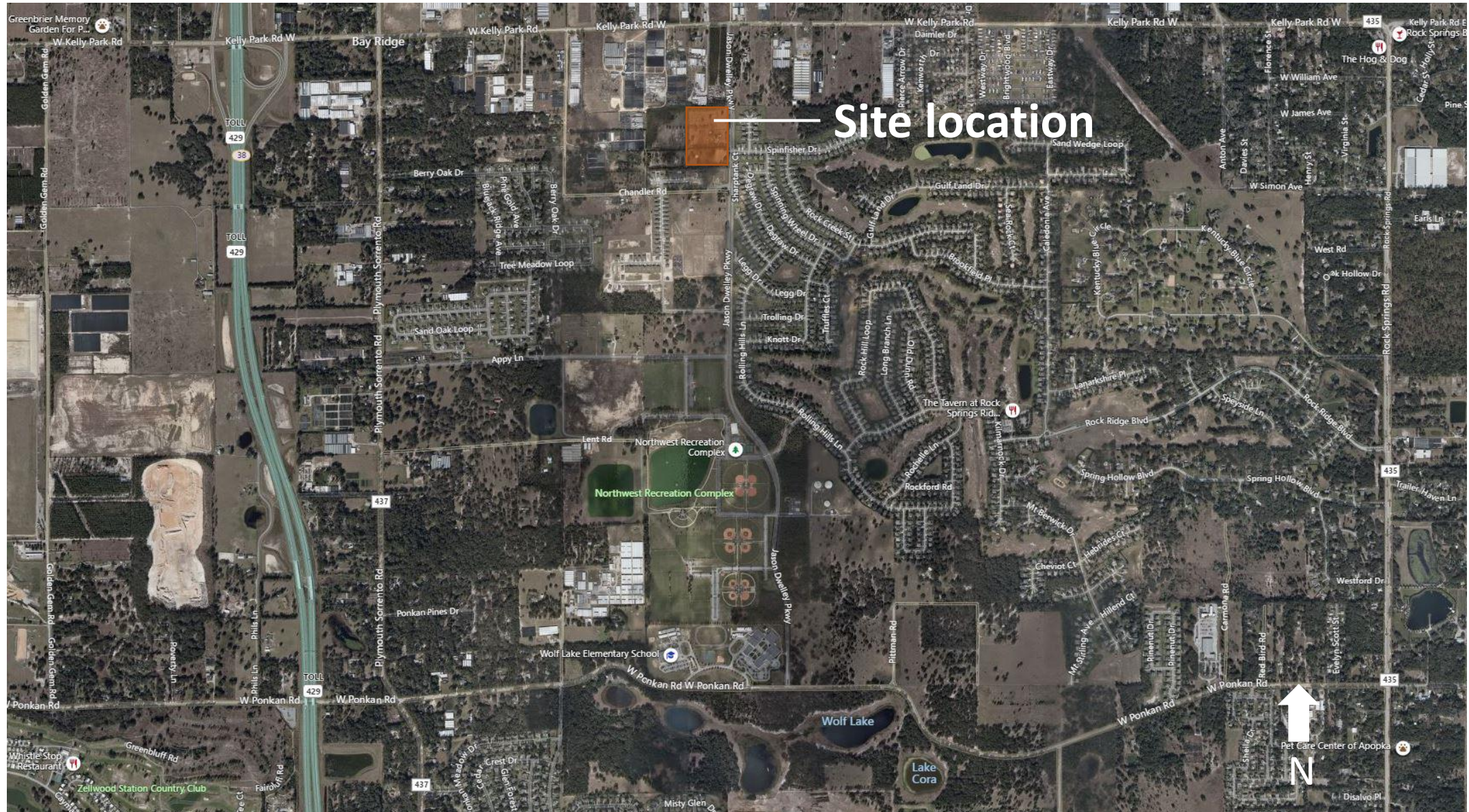
Step 5 - Community Meeting(s) *Estimated Spring 2021*

Step 6 - Rule Development Workshop

Step 7 - Public Hearing

Step 8 - Storage of materials

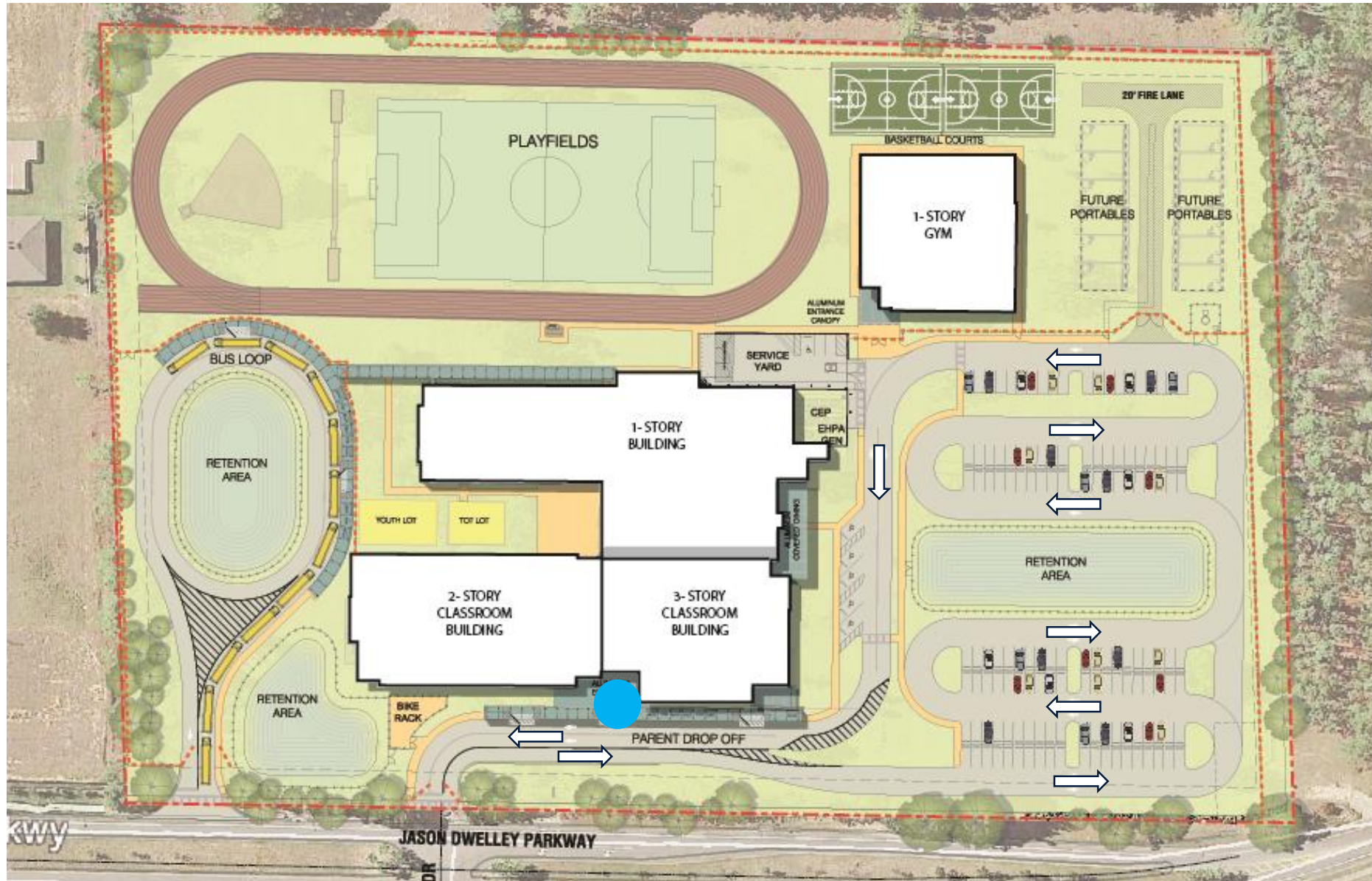
Site 90-K8-N-7 School Site Location



Site 90-K8-N-7 Greenfield Site



Site 90-K8-N-7- Site Plan



School Main Entrance

Site Data

Provided Separate Parent and Bus loops

Separate Parent and Bus Loops will be provided from Jason Dwelley Parkway

Provided Queuing

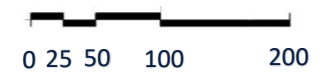
Queuing for 243 vehicles which amounts to 4,860 feet will be provided.

Provided Parking

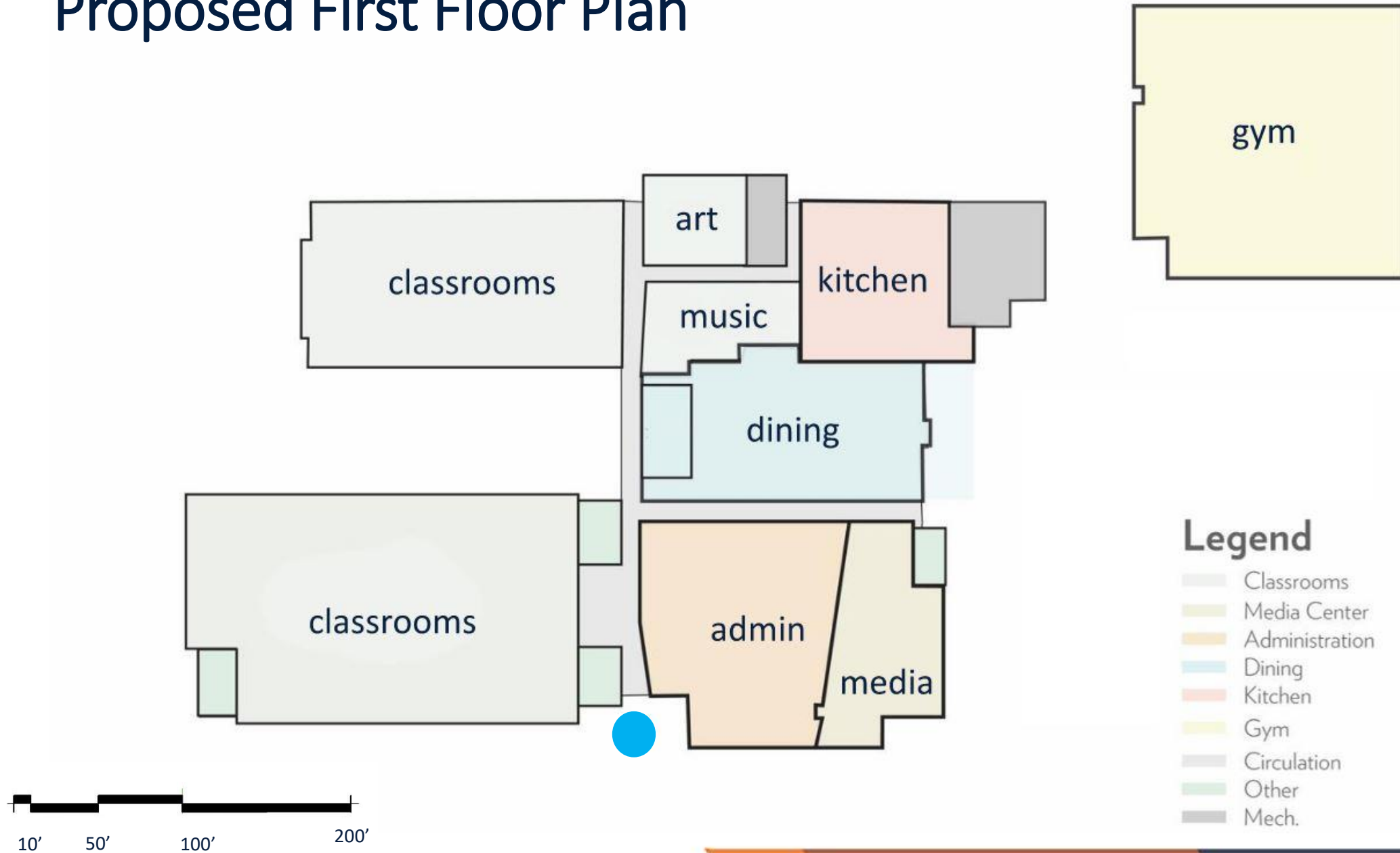
Parking for 148 vehicles will be provided.

Bus Queuing

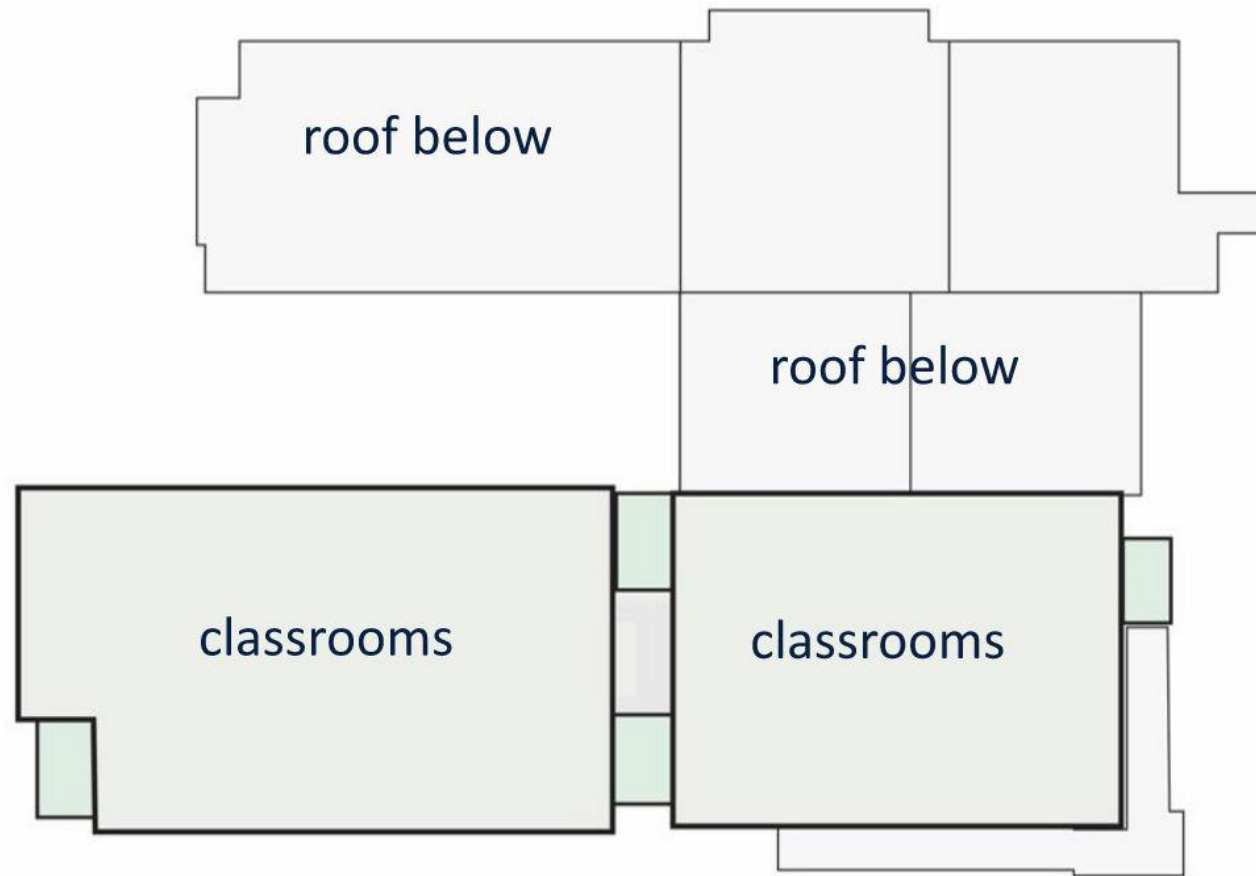
Queuing for 13 school Buses will be provided.



Proposed First Floor Plan



Proposed Second Floor Plan

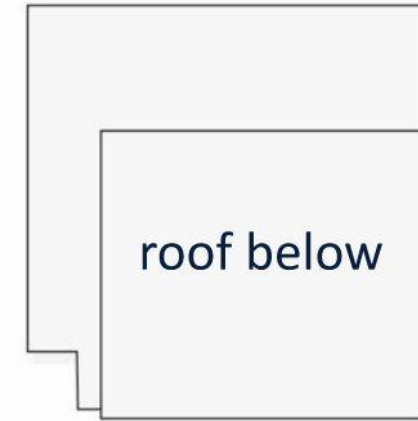
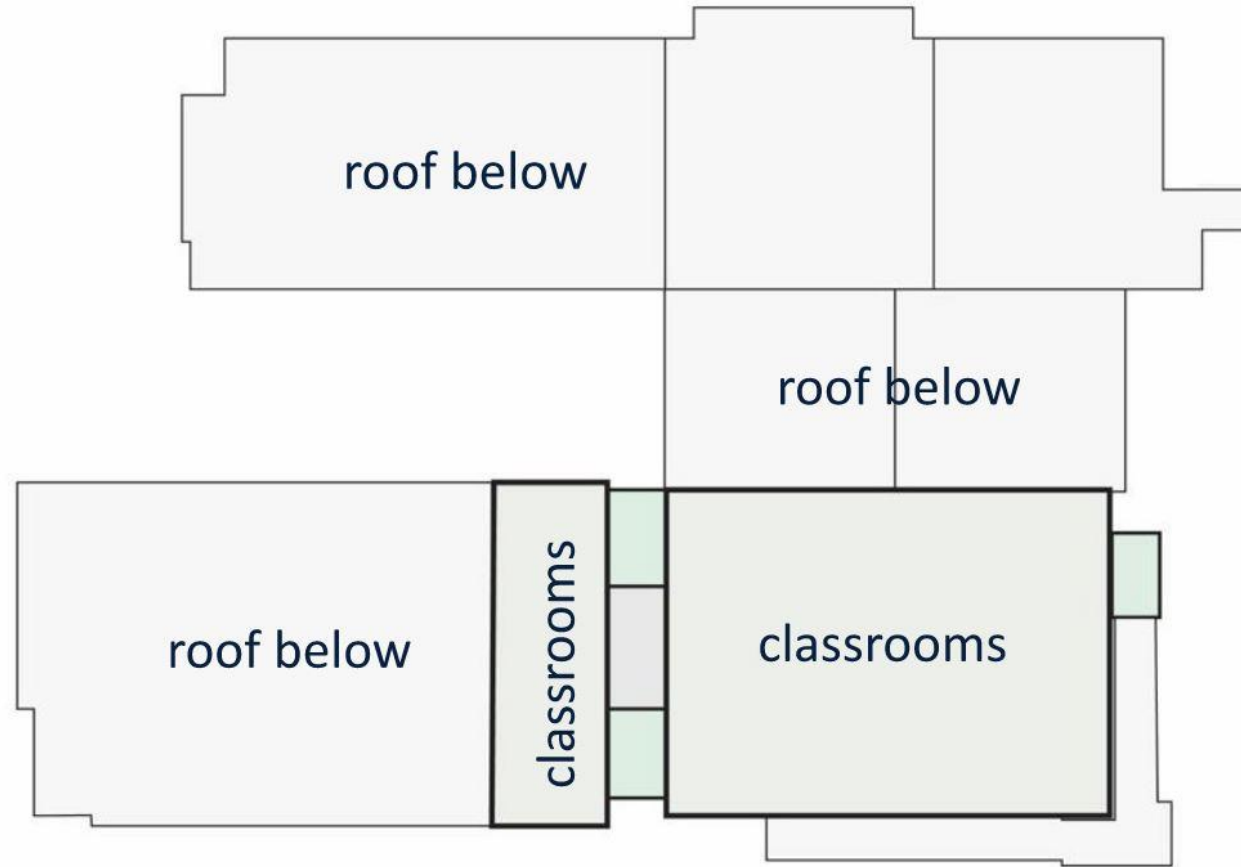


Legend

- Classrooms
- Media Center
- Administration
- Dining
- Kitchen
- Gym
- Circulation
- Other
- Mech.



Proposed Second Floor Plan



Legend

- Classrooms
- Media Center
- Administration
- Dining
- Kitchen
- Gym
- Circulation
- Other
- Mech.



Sustainability

Site 90-K8-N-7 will be designed to meet Green Globes sustainable building standards



Sustainable Features Include:

Site

- Native/low water plants – reduce water consumption
- Low Impact Design (LID) stormwater design

Building

- 10% more energy efficient than ASHRAE 90.1 standard
- High Efficiency Chillers (8% energy reduction)
- Light colored roof to reduce heat gain and improves energy performance
- Energy Star rated equipment
- Water saving toilets, faucets, and fixtures
- Most general classrooms have daylighting
- Thermal efficient windows/glazing
- Fully automated building controls system



Example of Reception Area



Example of Media Center



Typical Classroom



Example of Science



Example of Collaboratorium



Example of Music



Example of Dining



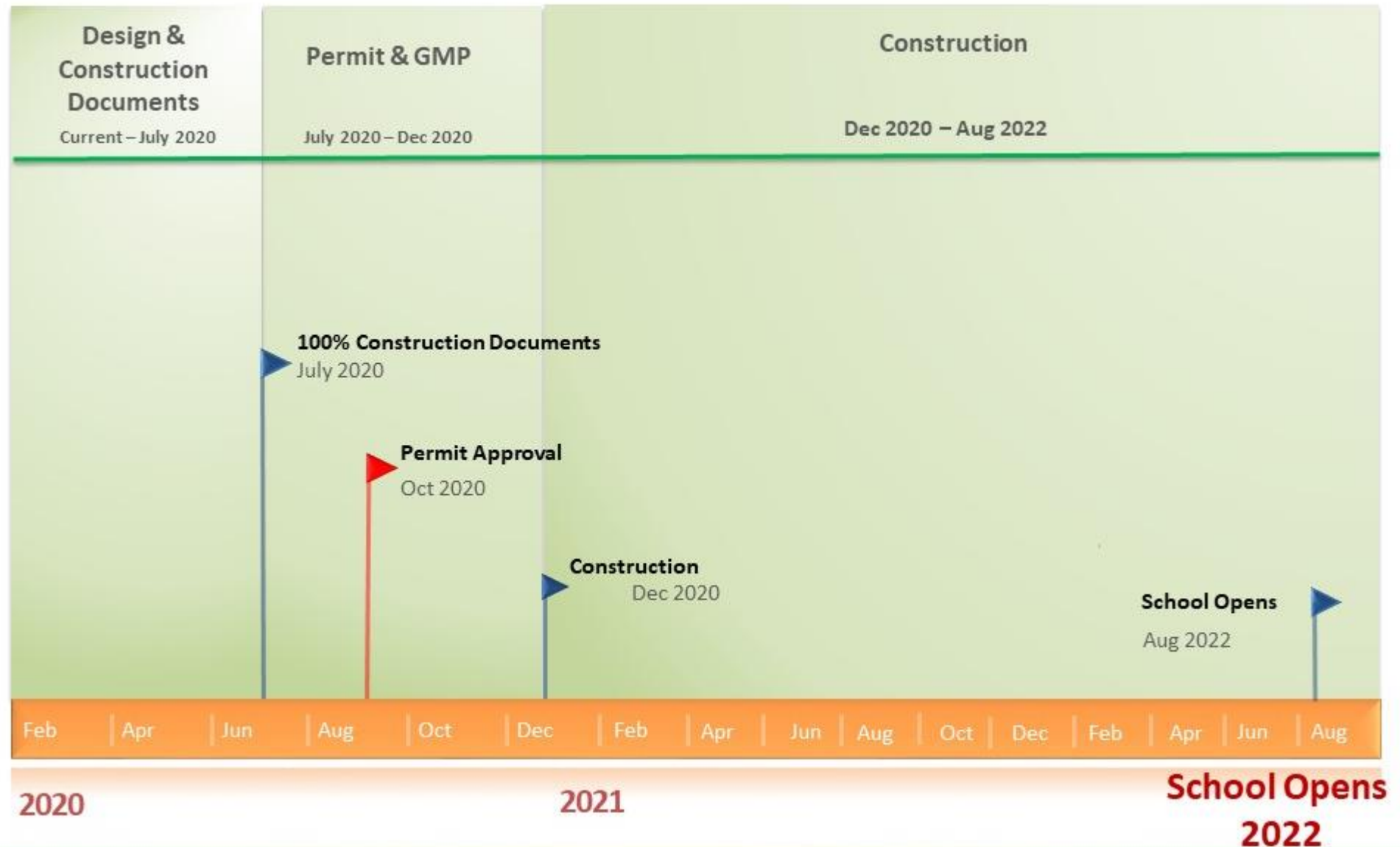
Example of Gym



Example of Tot Lot



Project Schedule





Questions and Comments