

April 17, 2019

100% Design Community Meeting

Pinar Elementary School

Please sign in on your mobile device: <https://communitymeeting.ocps.net/>



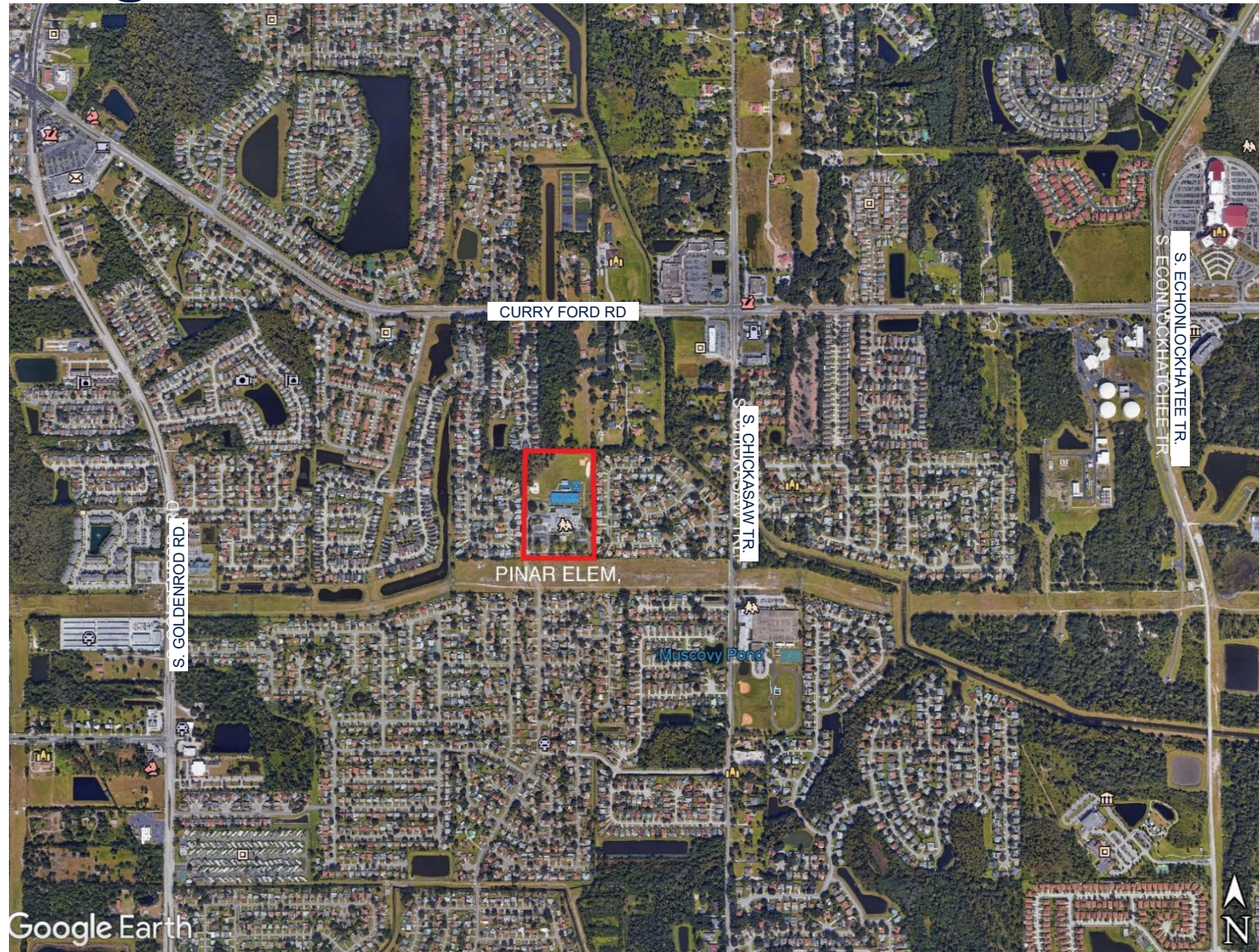
**Orange County
Public Schools**

Pinar Elementary School Meeting Agenda

April 17, 2019 6:00 PM

- Welcome – School Board Member Johanna López
- Introductions – Lauren Roth/ Facilities Communications
- Project Update – Architect **SCHENKELSHULTZ**
□ □ □ ARCHITECTURE □ □ □
– Contractor R. L. Burns
- Questions and Answers
- Adjournment

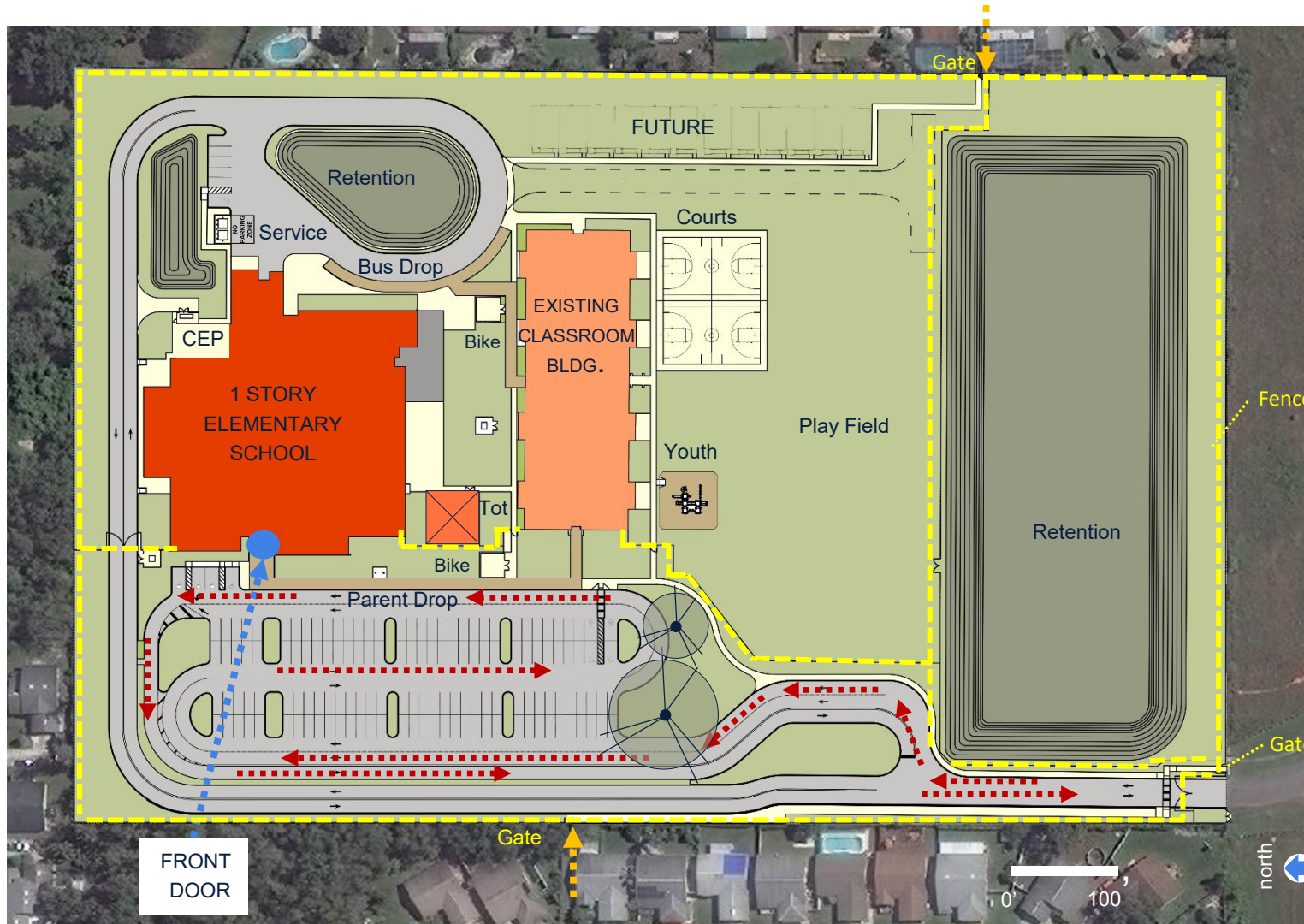
Surrounding Context



Site Aerial Map



Final Site Plan



ES CONCEPT INFORMATION:

Parking: 140 cars
Stacking: 153 cars (30.6%)

TO CHICKASAW TRAIL

PLANNING PARAMETERS:

- 500 Student School with 500 Core
- Current enrollment 412
- Target +/-150 Parking
- School currently has 1 bus
- Bus loop accommodates 20 buses
- Plan for 12 future portables

Exterior Elevation



Exterior Elevation



Exterior Elevation



Interior Spaces



Interior Spaces



Example images from previous projects

Exterior Spaces



Previous OCPS Schools using the same/similar prototype

- Water Spring Elementary
- Deerwood Elementary School
- Hungerford Elementary School
- Maxey ES / Site 207-E-W-7
- Laureate Park Elementary School
- Meadow Woods Elementary School
- Ventura Elementary School
- Independence Elementary School
- Eagle Creek Elementary School
- John Young Elementary School
- Shingle Creek Elementary School
- Wheatley Elementary School

Sustainability

- The new Pinar Elementary School is designed to meet Green Globes sustainable building standards. Sustainable Features Include:

Site

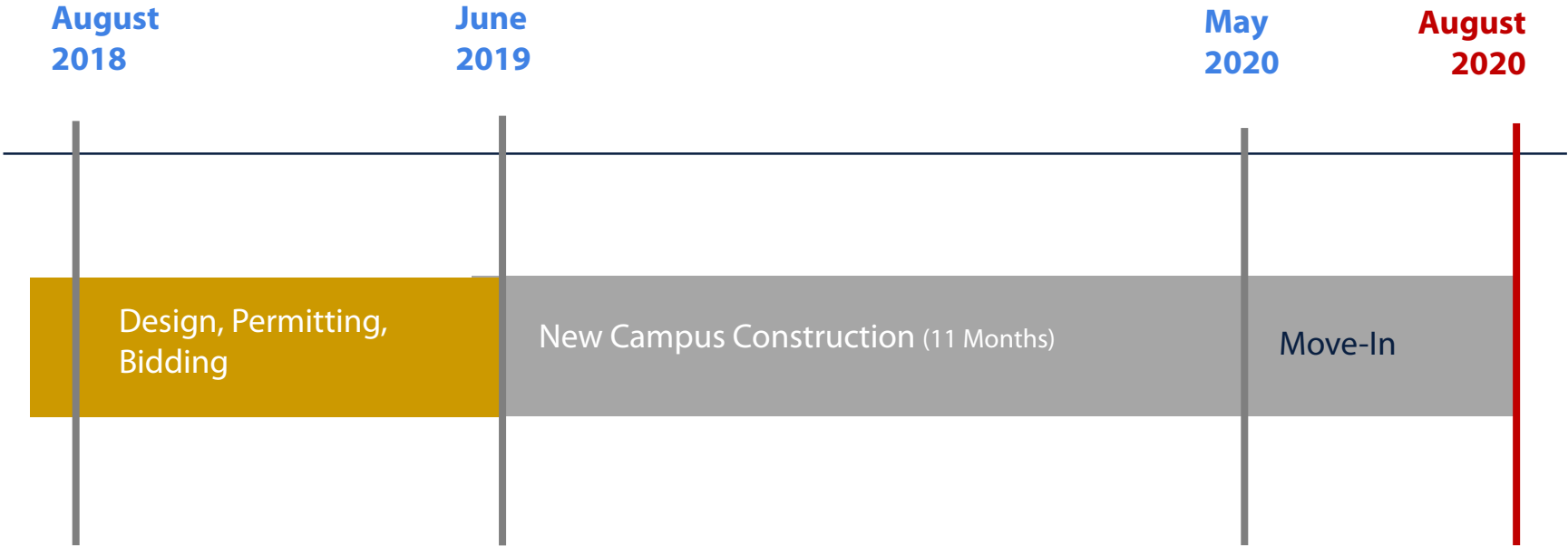
- Native/low water plants – reduce water consumption
- Low Impact Design (LID) stormwater design

Building

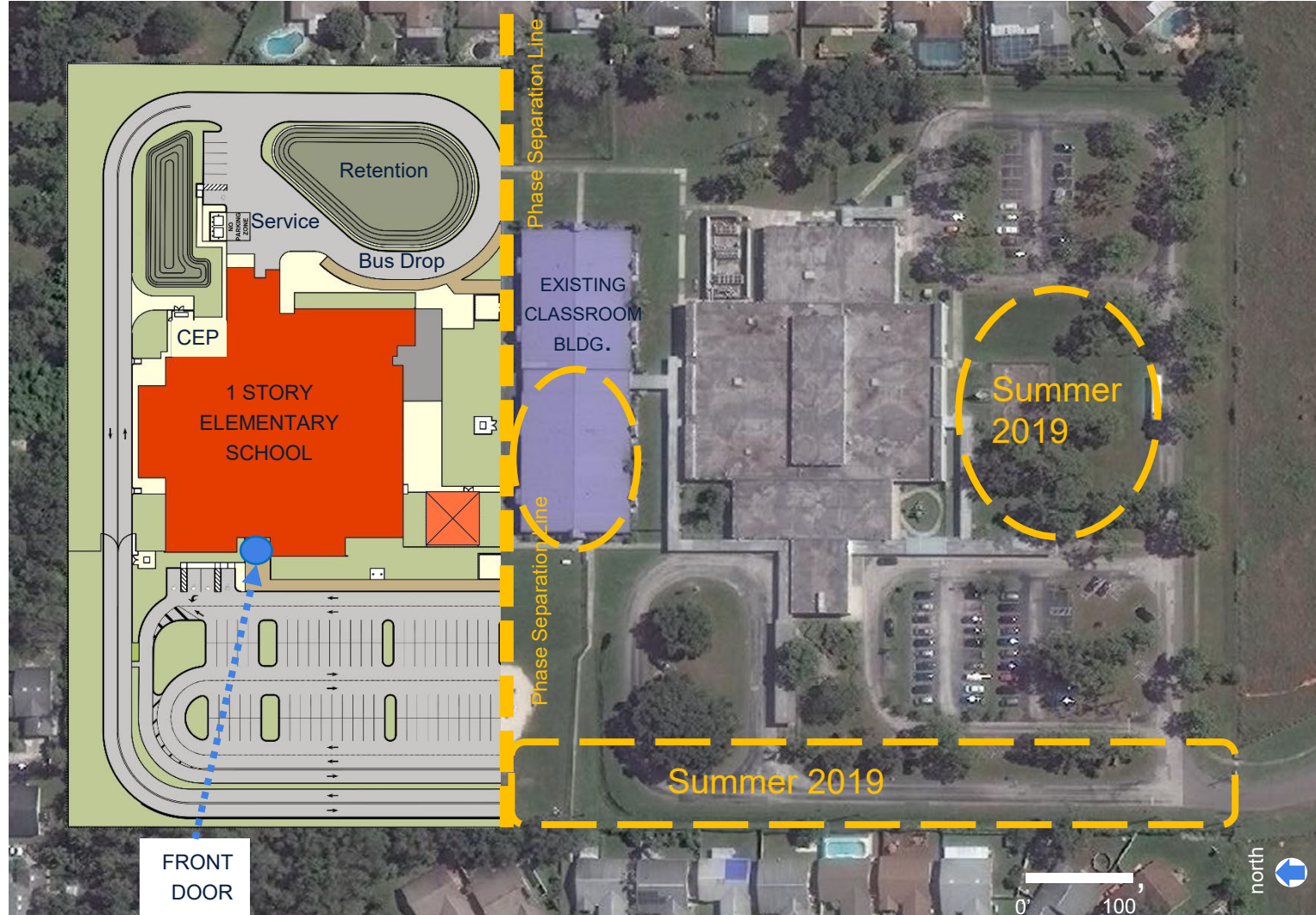
- 10% more energy efficient than ASHRAE 90.1 standard
- Lighting system and power outlets designed to turn lights and power off in unoccupied spaces (energy reduction)
- High Efficiency Chillers (10% energy reduction)
- Light colored roof to reduce heat gain and improves energy performance
- Energy Star rated equipment
- Water saving toilets, faucets, and fixtures
- All classrooms in the new building have daylighting
- Over 75% of ALL spaces in the new building have daylighting
- Thermal efficient windows/glazing



Schedule



Site Plan - Phase 1 & II May 2019 - August 2020



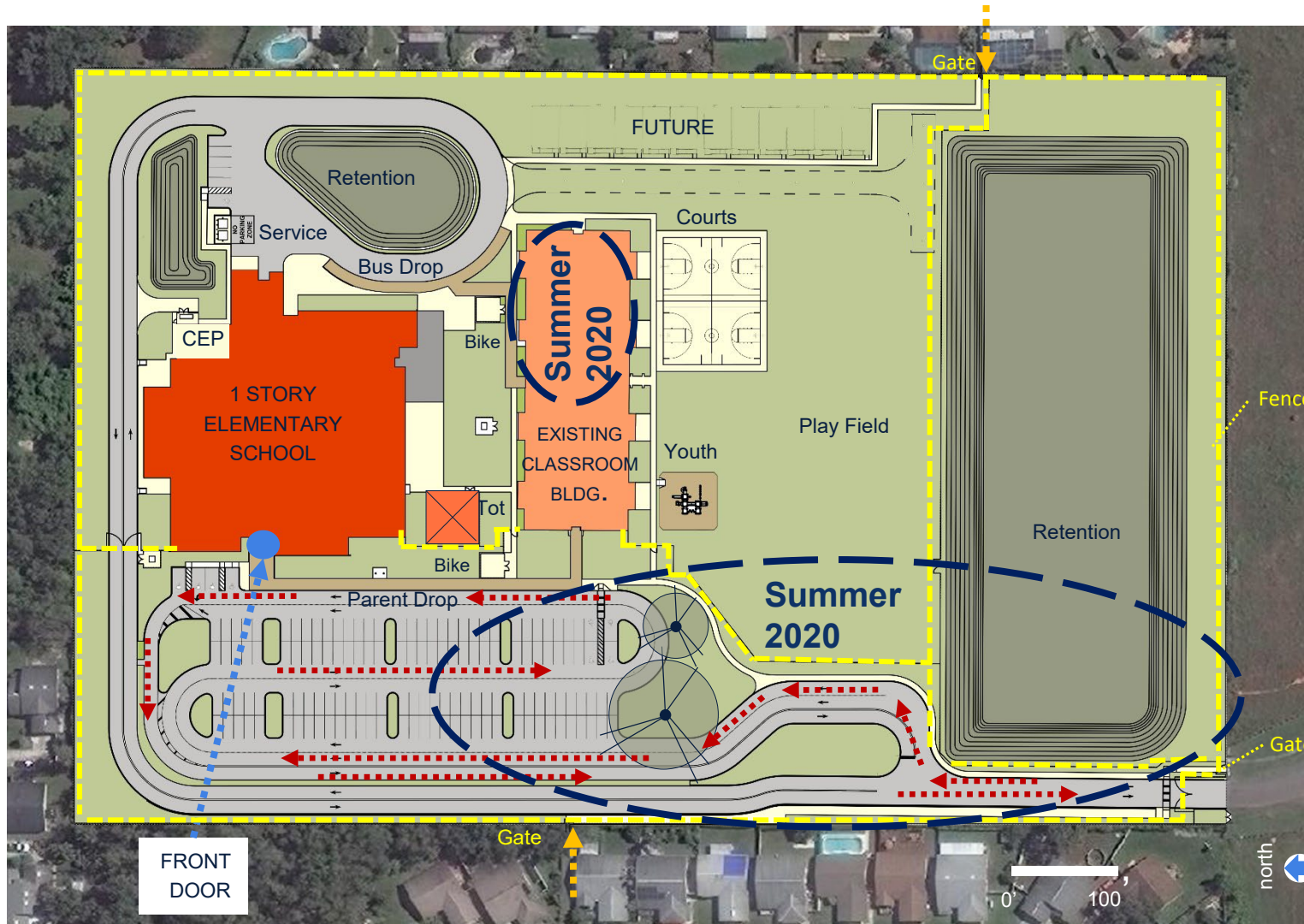
ES CONCEPT INFORMATION:

Parking: 140 cars
Stacking: 153 cars (30.6%)

Phase I – May 15, 2019 - August 15, 2019
Construct portion of pond and transfer fill to north side of site.
Begin renovation in building 200

Phase II – August 15, 2019- May 20, 2020
Complete the main building and portion of the parking and access drive

Site Plan Phase III May 2020 - July 2020



ES CONCEPT INFORMATION:

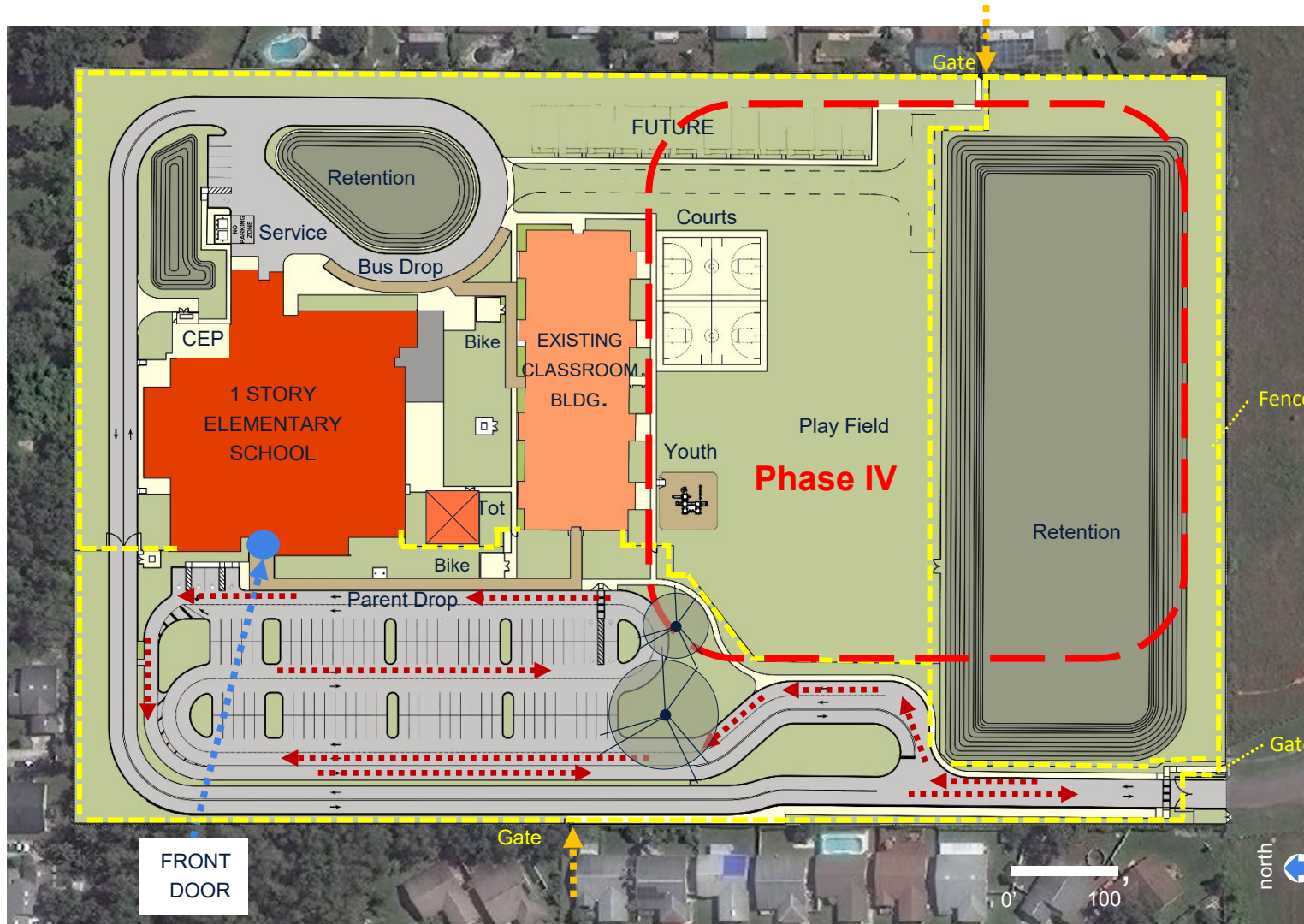
Parking: 140 cars
Stacking: 153 cars (30.6%)

Phase III – May 20, 2020 – July 15, 2020
Complete the renovation of existing building 200 & 300
Complete the access drive and pond on south side of property

PLANNING PARAMETERS:

- 500 Student School with 500 Core
- Current enrollment 412
- Target +/-150 Parking
- School currently has 1 bus
- Bus loop accommodates 20 buses
- Plan for 12 future portables

Site Plan Phase IV July 2020 -November 2020



ES CONCEPT INFORMATION:

Parking: 140 cars
Stacking: 153 cars (30.6%)

TO CHICKASAW TRAIL

Phase IV – July 15, 2020- November 23, 2020
Demolish the existing building and complete playfields

PLANNING PARAMETERS:

- 500 Student School with 500 Core
- Current enrollment 412
- Target +/-150 Parking
- School currently has 1 bus
- Bus loop accommodates 20 buses
- Plan for 12 future portables

Questions & Answers