

# Orange County Public Schools



Welcome! Please sign in  
on your mobile device:  
<http://communitymeeting.ocps.net/>

the broad prize  
for urban education



Corner Lake Middle School  
School Board Member Joie Cadle  
Design Community Meeting  
April 19, 2017



## Program Verification/Schematic Design

April 19, 2017, Corner Lake Middle School, 6:00 PM

- Welcome – Joie Cadle - District 1  
School Board Member
- Introductions – Lauren Roth - Facilities Meeting Organizer
- Project Architect: C.T. Hsu + Associates, PA
- Questions and Answers
- Adjournment

# SITE ANALYSIS

## CAMPUS AERIAL

### PROJECT DATA

Capacity:  
1291 Student Stations

Building Area:  
161,682 Gross SF

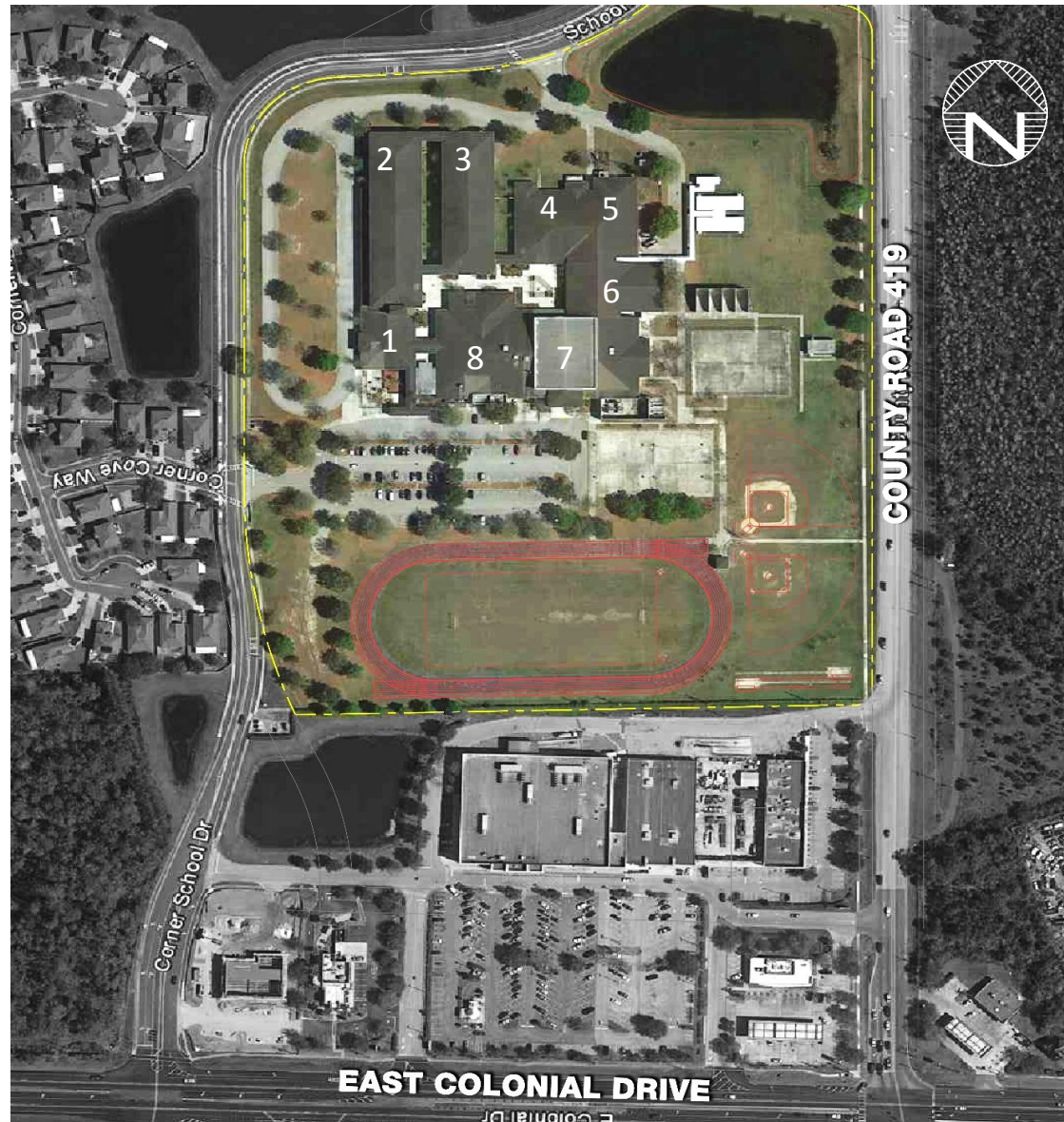
Parking Provided:  
138 Spaces

Car Queue Provided:  
78 Cars

Bus Queue Provided:  
23 Buses

Site Area:  
+/- 25 Acre

- Admin - Building 1
- Classroom - Building 2
- Classroom - Building 3
- Media Center - Building 4
- Vo-Tech - Building 5
- Music/Chorus - Building 6
- Gymnasium - Building 7
- Cafeteria - Building 8



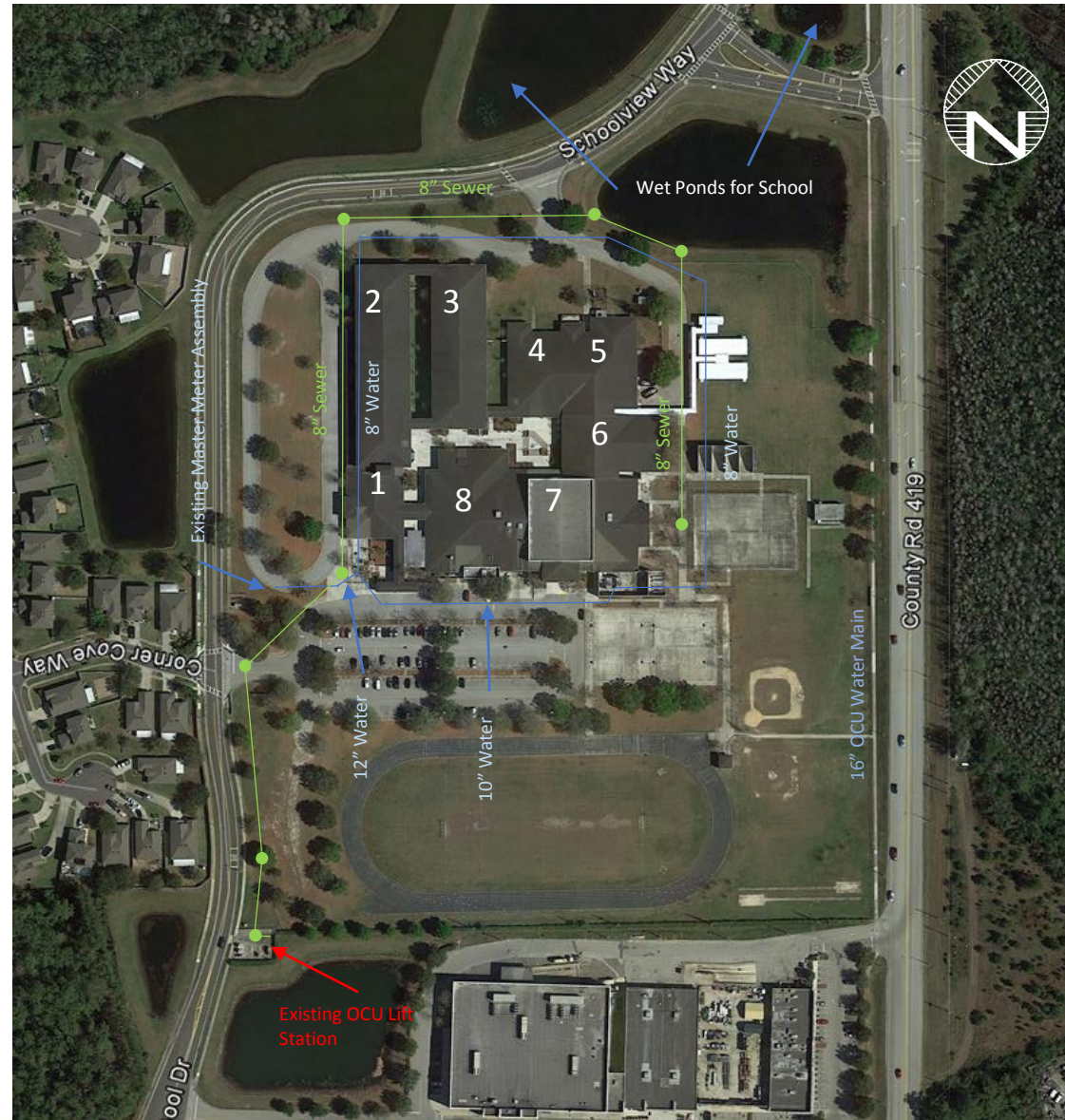


# COMPREHENSIVE NEEDS

## SITE IMPROVEMENTS

### PROPOSED SCOPE OF WORK

- Replace damaged fencing
- Re-stripe parking
- Refurbish athletic amenities
- Asphalt pavement improvements
- Repair/replace sidewalks to comply with ADA requirements
- Remodel/repair outside agricultural areas
- Evaluate parent drop-off and canopy



# COMPREHENSIVE NEEDS

## BUILDING ENVELOPE

### PROPOSED SCOPE OF WORK

- Roof replacement
- Evaluate stucco wall systems
- Repair louvers and wall penetrations as required
- Evaluate energy code requirements

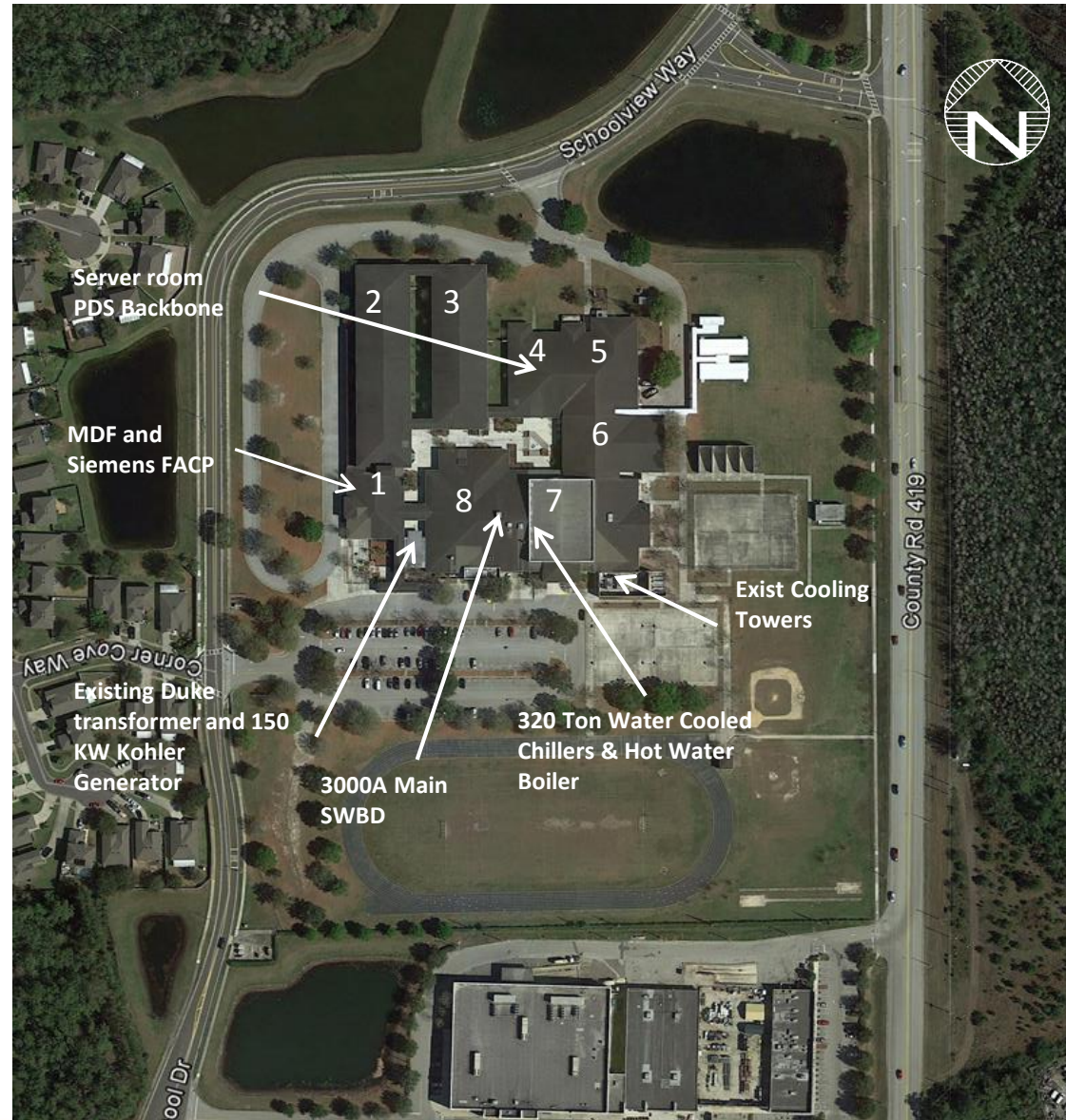




# COMPREHENSIVE NEEDS

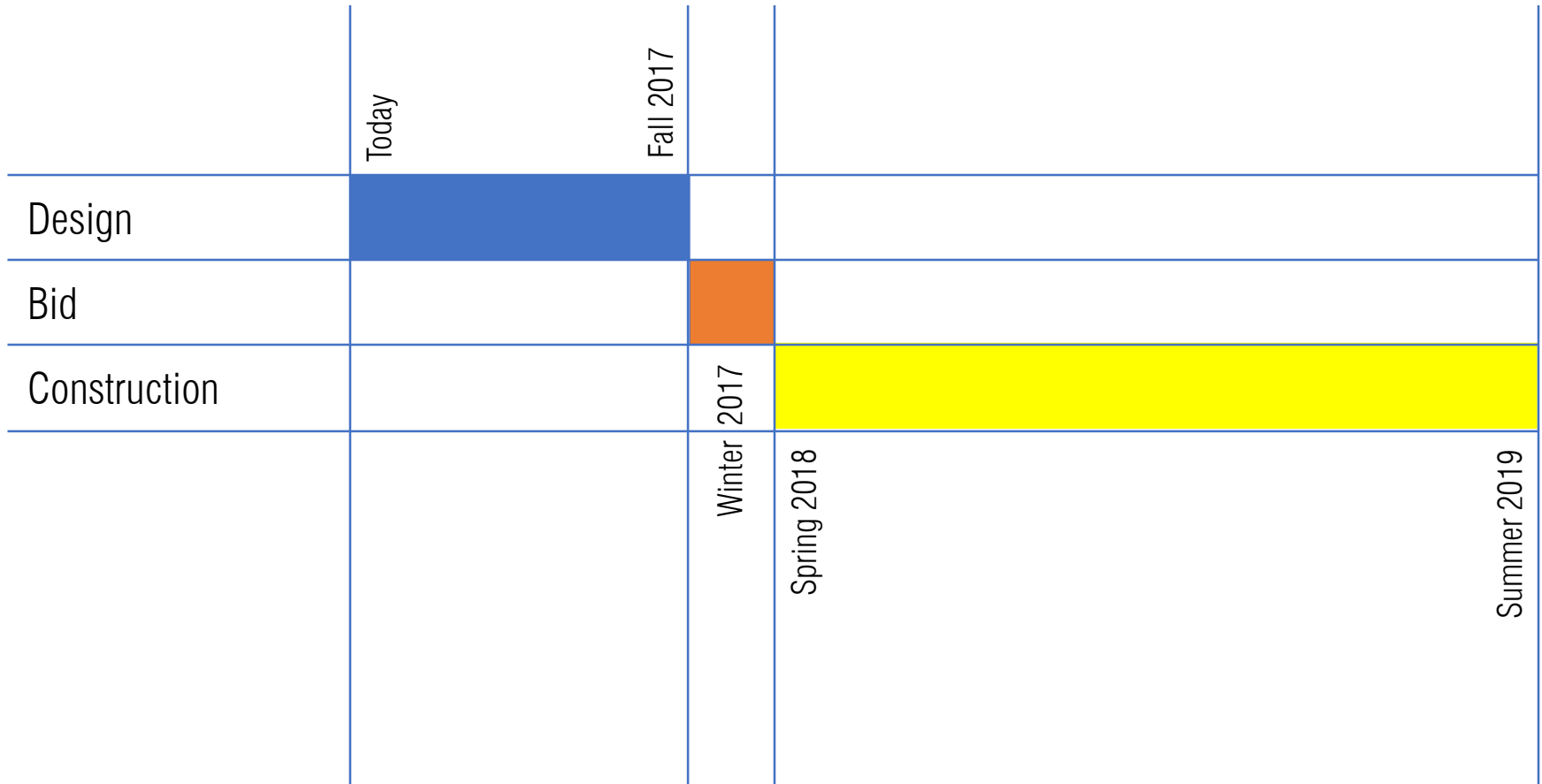
## BUILDING SYSTEMS PROPOSED SCOPE OF WORK

- HVAC system upgrades
- Fire alarm system upgrades
- Evaluate exterior lighting for safety
- Evaluate lightning protection system
- Technology infrastructure upgrades
- Evaluate interior lighting
- Plumbing fixtures upgrades



# SCHEDULE

## PROPOSED SCHEDULE



# THANK YOU!

Thank you to the Orange County taxpayers, you make  
this construction possible.



# QUESTIONS AND ANSWERS