

Orange County Public Schools



Welcome! Please sign in
on your mobile device:
<http://communitymeeting.ocps.net/>



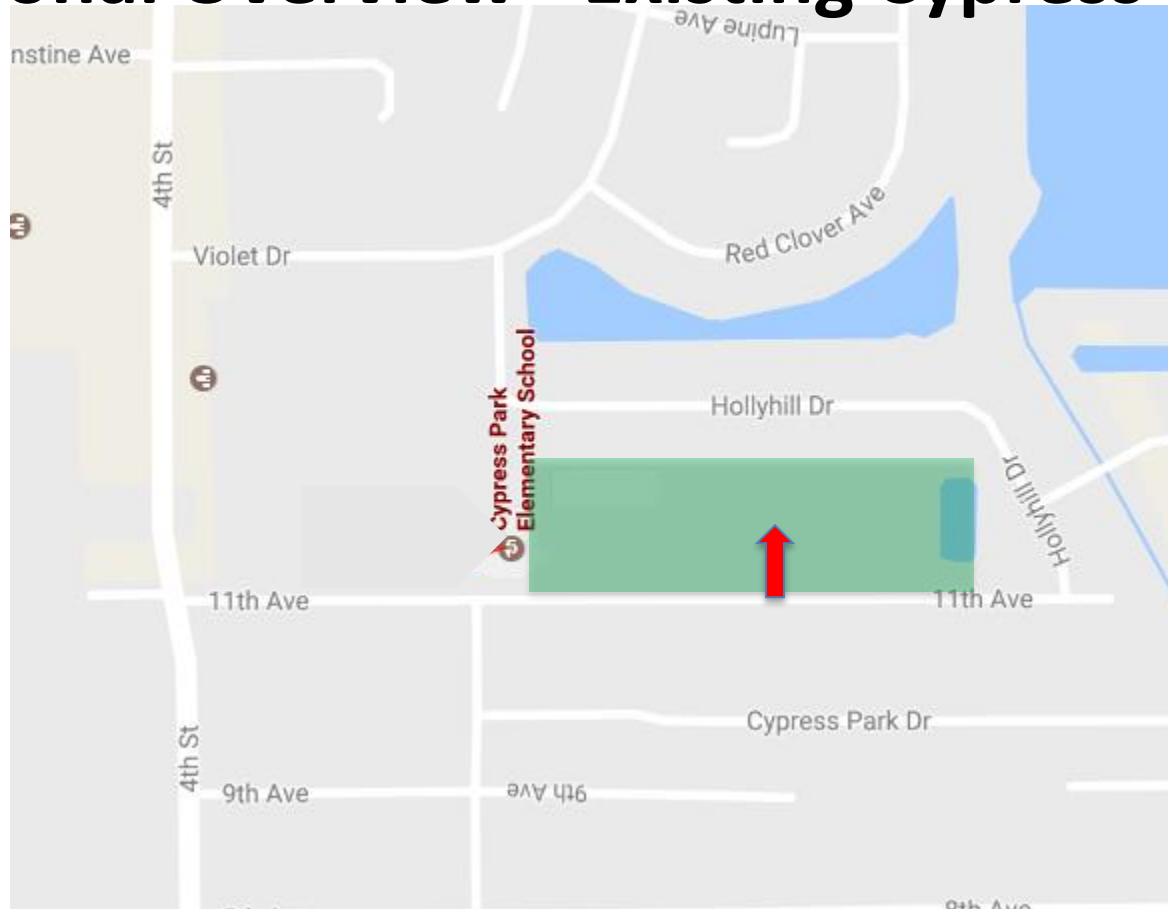
Cypress Park/Durrance Elementary School
40% Construction Community Meeting
February 21, 2018

Cypress Park/ Durrance Elementary School 40% Construction Meeting

Meeting Agenda

- **Welcome:** School Board Member Linda Kobert
- **Introductions:** Meeting Organizer Lauren Roth, OCPS Communications
- **Project Update:** Architect: Song + Associates, Inc.
Contractor: Charles Perry Partners, Inc.
- **Questions & Answers**
- **Adjournment**

Regional Overview - Existing Cypress Park Site



- Feeder street is 4th Street
- Access street to school is 11th Ave.



Existing School Data

Existing Loop Parking:	32 Cars
Existing Bus Drop Off on 11 th Avenue:	2 Buses
Existing Grass & Service Parking:	20 Cars
Existing Streetside Sidewalks:	None

Existing School Data

Existing Site Area – 10 acres
Current School Population – Approx. 280





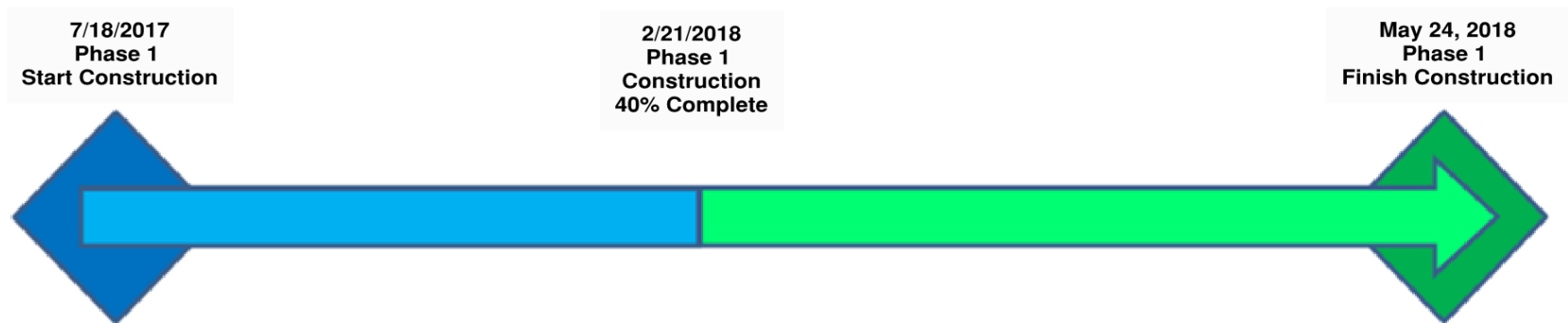






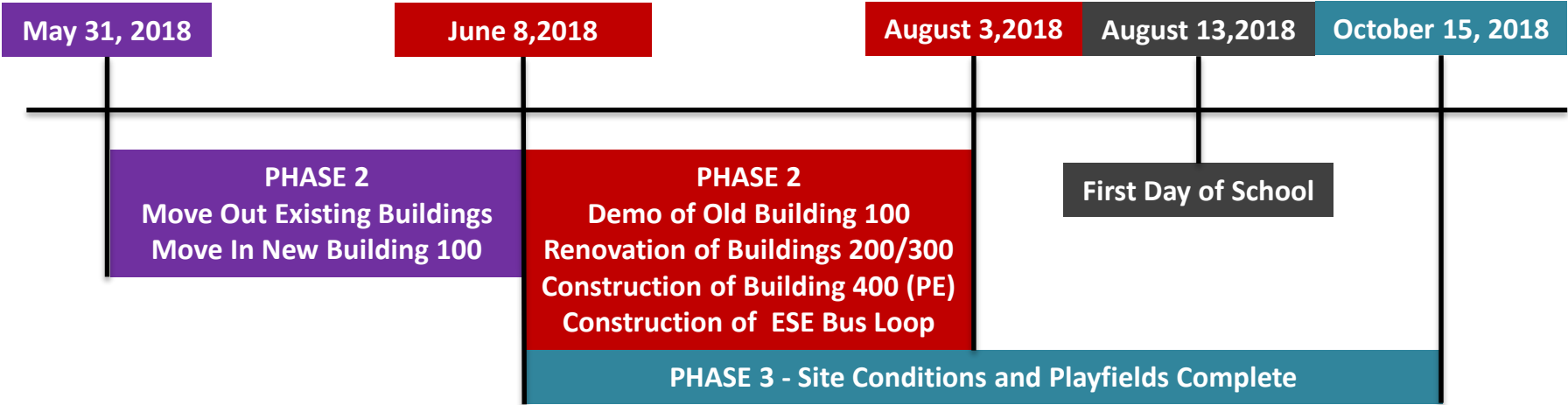
PHASE 1 CONSTRUCTION – BUILDING 100

- July 18, 2017: Start Construction Building 100
- February 21, 2018: Construction 40% Complete
- May 24, 2018: Finish Construction Building 100



PHASE 2 & 3 CONSTRUCTION

BUILDINGS 200, 300, 400 & ESE BUS LOOP









Concrete Slab and Walls



Concrete Tilt Walls and Sitework

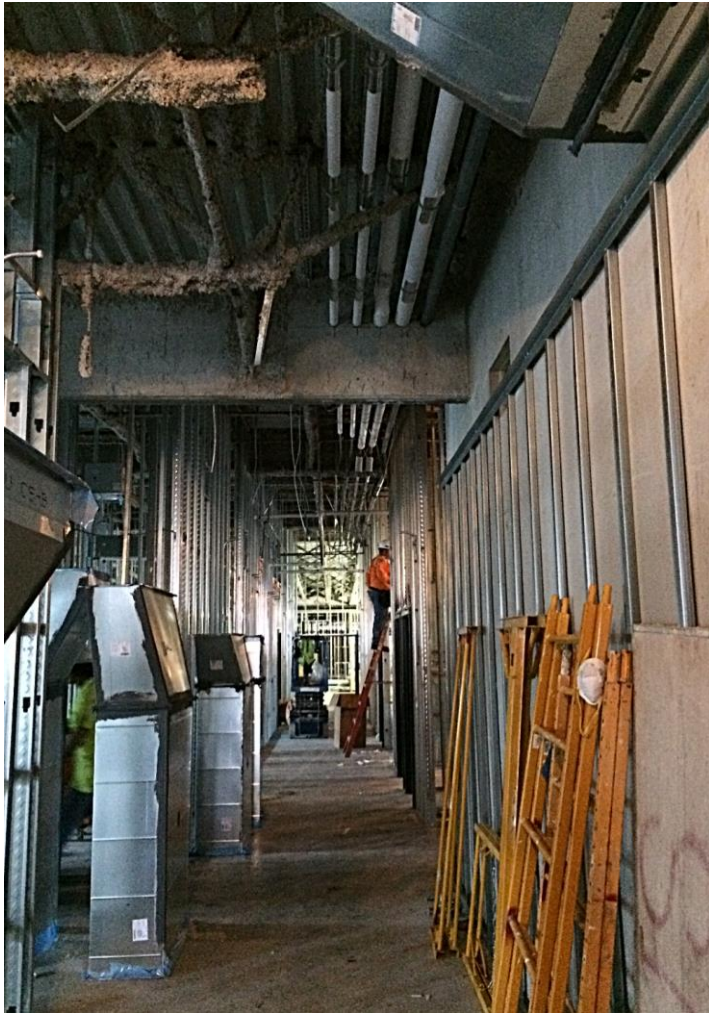


Concrete Tilt Walls









Thank You!

Questions?