

# Orange County Public Schools



Dover Shores Replacement School  
100 %Design / Construction Kick-off

March 6, 2017

**WINNER**

the broad prize  
for urban education



Welcome! Please sign in on your mobile device:  
<http://communitymeeting.ocps.net/>

### Meeting Agenda

March 6, 2017, Dover Shores Elementary School, 6:00 PM

- Welcome – School Board Member – Nancy Robinson
- Introductions – Facilities Meeting Organizer Lauren Roth
- Project Update - Architect: Rhodes+Brito Architects  
Construction Manager: CPPI
- Questions and Answers
- Adjournment



### Planned Facility:

NEW Campus on existing site to Meet District Standards for Elementary Schools:

- Prototypical Core Spaces

### Enhanced Learning Environment:

- Latest Technology
- Planned Site Circulation
- Safety
- Community Asset





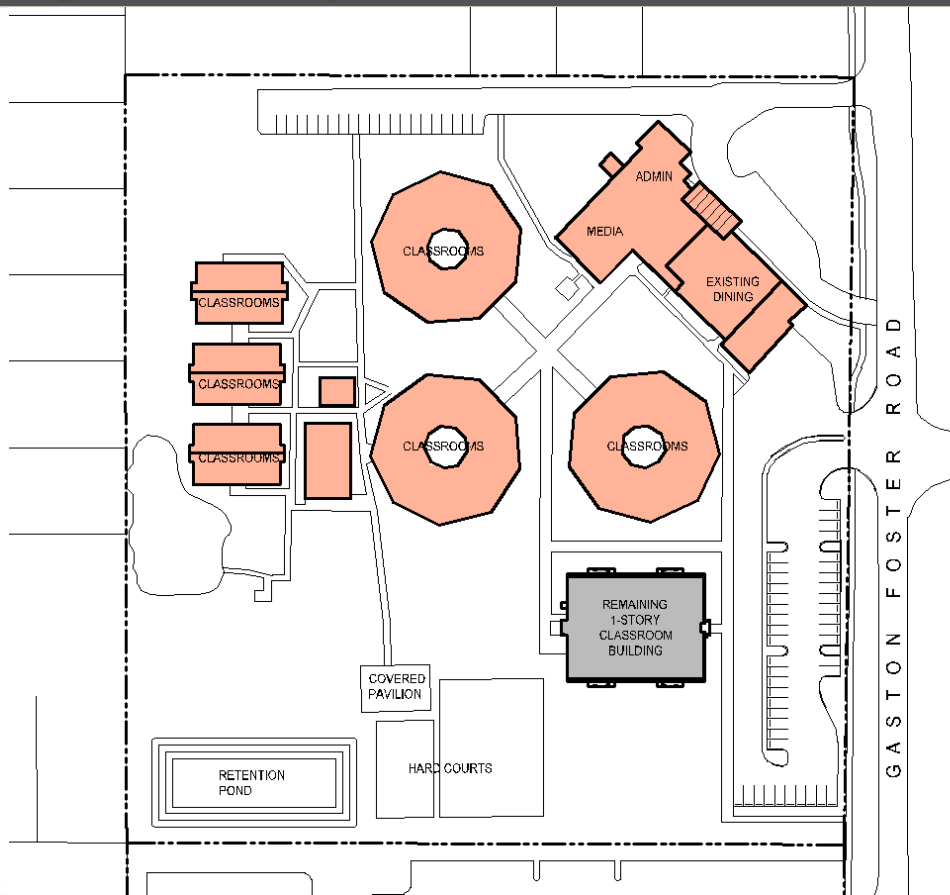
### Planned Facility:

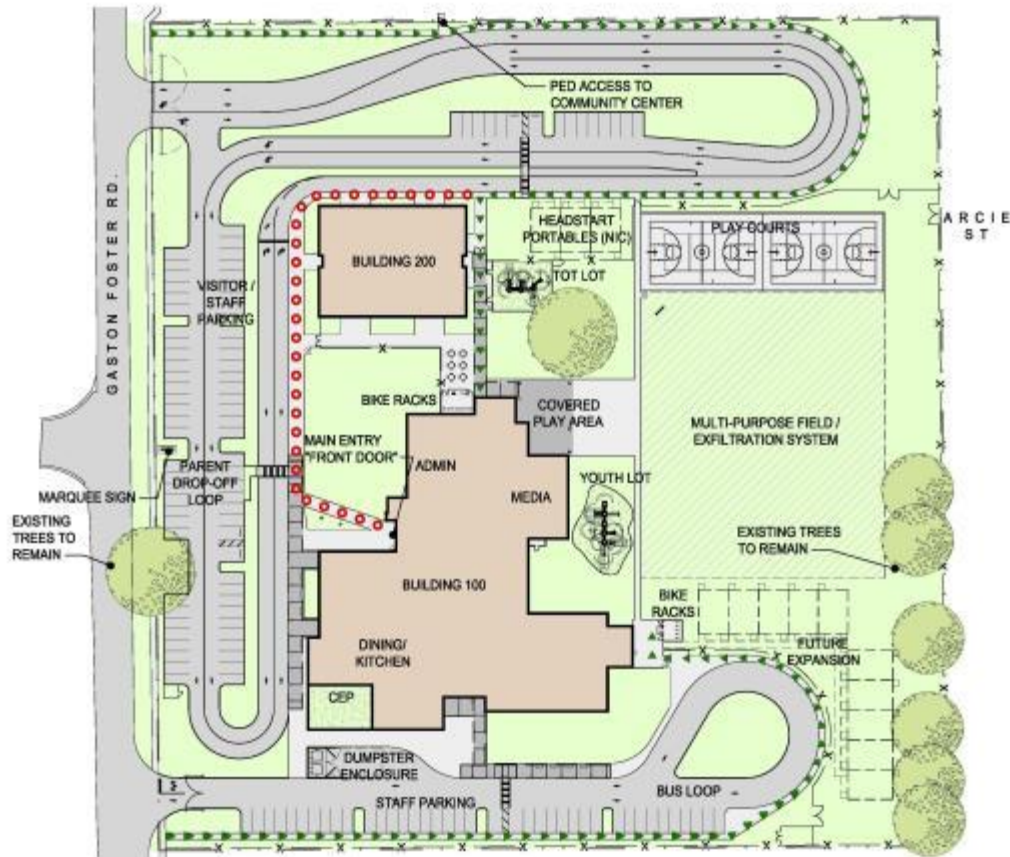
NEW Campus To Meet District Standards for Elementary Schools:

- Prototypical Core Spaces

### Enhanced Learning Environment:

- Latest Technology
- Planned Site Circulation
- Safety
- Community Asset





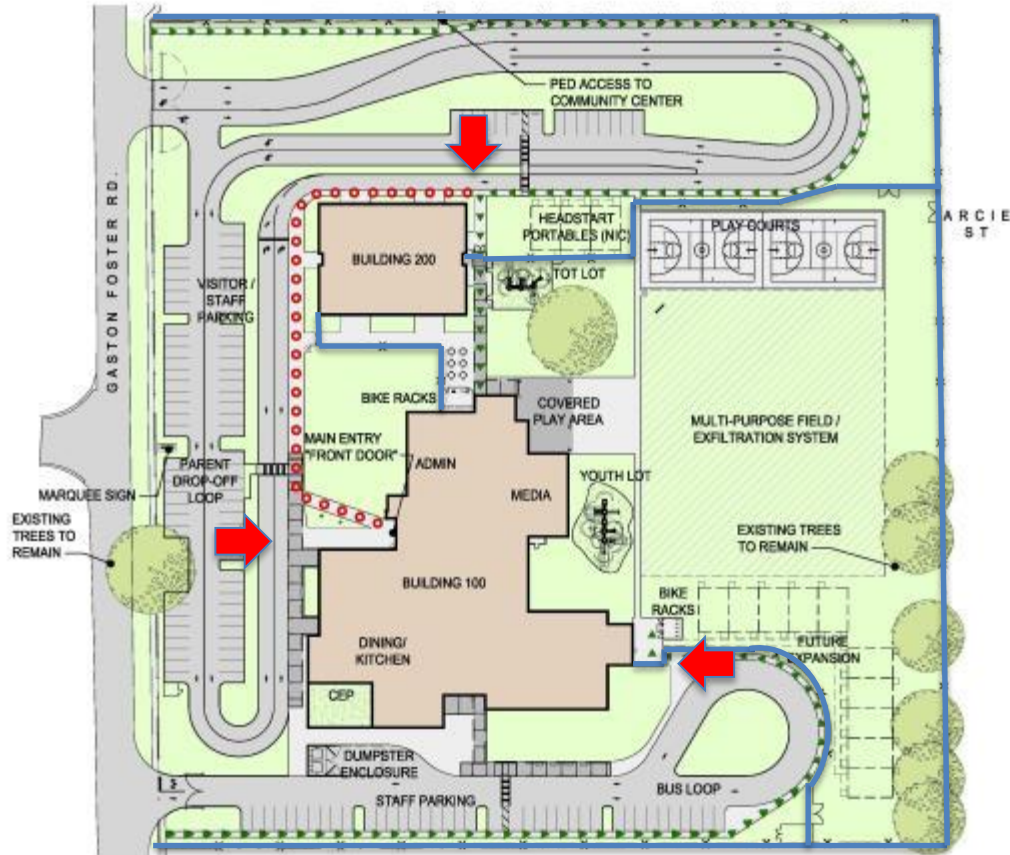
## LEGEND

- PEDESTRIAN ACCESS
- BICYCLE ACCESS
- ▲▲▲▲ SHARED PEDESTRIAN
- NEW FENCE LINE

## SITE DATA

SITE AREA = ± 9.1 ACRES  
 PARKING = 121 SPACES  
 QUEUING:  
     Required:  
         166 cars at 3,320 LF  
         20% Of 650 Student Stations  
         + Future  
     Provided:  
         144 cars at 2,880 LF  
 BUSES = 6





## LEGEND

- PEDESTRIAN ACCESS
- BICYCLE ACCESS
- ▲▲▲▲ SHARED PEDESTRIAN
- NEW FENCE LINE

## SITE DATA

SITE AREA = ± 9.1 ACRES  
 PARKING = 121 SPACES  
 QUEUING:  
     Required:  
         166 cars at 3,320 LF  
         20% Of 650 Student Stations  
         + Future  
     Provided:  
         144 cars at 2,880 LF  
 BUSES = 6

### Traffic Study

#### Recommendations

##### **Separate Bus and Parent Loop**

Entrance added to accommodate separate bus and parent loops

##### **Queuing**

133 vehicles recommended based on projected student capacity

Queuing for 144 vehicles provided

##### **Parking**

75 parking spaces recommended based on projected student capacity

Parking for 121 vehicles provided (68 spaces existing)

##### **Buses**

7 buses recommended based on projected student capacity

Bus loop accommodates 10 buses (6 buses at existing loop)









### Planned Facility:

☑ Technology : Campus

The technology package will include:

- Student and teacher computers (3 laptops)
- Interactive Flat Panel
- White boards
- Video on demand
- Two computer laboratories
- Secure card access
- Security cameras
- Wireless Access
- Audio Enhancement





### Planned Facility:

☒ Media Center

The Media Center will include:

- Student group projects area
- Library tables for an entire class
- Story-telling area
- CCTV studio
- Professional library
- Audio Enhancement





### Planned Facility:

☒ Cafeteria

### The Cafeteria will include:

- New Kitchen
- Two Serving Lines
- Teacher Dining
- Elevated Stage
- Extended Day Office
- Restrooms



### Planned Facility:

☑ Specialty Classrooms

- Art Classroom with kiln
- Science Classroom
- Music Classroom



### Planned Facility:

- ☒ Administration

The administrative area includes:

- Single point of entry during school hours
- Lobby
- Administrative offices, workroom & storage
- Large conference room
- Clinic
- Teacher planning areas







### Planned Facility:

☒ Physical Education

### Physical Education will include:

- PE Office and storage
- Covered play structure
- Basketball Courts
- Tot lot play structure
- Youth lot play structure
- Playfields





### Planned Facility:

- ☒ Site Circulation
- On-site car stacking (144 cars)
- On-site parking (121 spaces)
- Bus loop
- Covered walkways
- Safe pedestrian paths
- Bike racks

### Sustainable Features

#### Site:

- Low Impact Design (LID) stormwater design
- Native/low water plants – reduce water consumption

#### Building:

- 10% more energy efficient than ASHRAE 90.1 standard
- High Efficiency Chillers (8% energy reduction)
- Light colored roof to reduce heat gain and improves energy performance
- Energy Star rated equipment
- Water saving toilets, faucets, and fixtures
- All general classrooms have daylighting
- Over 75% of ALL spaces have daylighting
- Thermal efficient windows/glazing
- Fully automated building controls system 10% more energy



**EAST ELEVATION**



**NORTH ELEVATION**





**WEST ELEVATION**



**SOUTH ELEVATION**



Schedule

Task

Duration

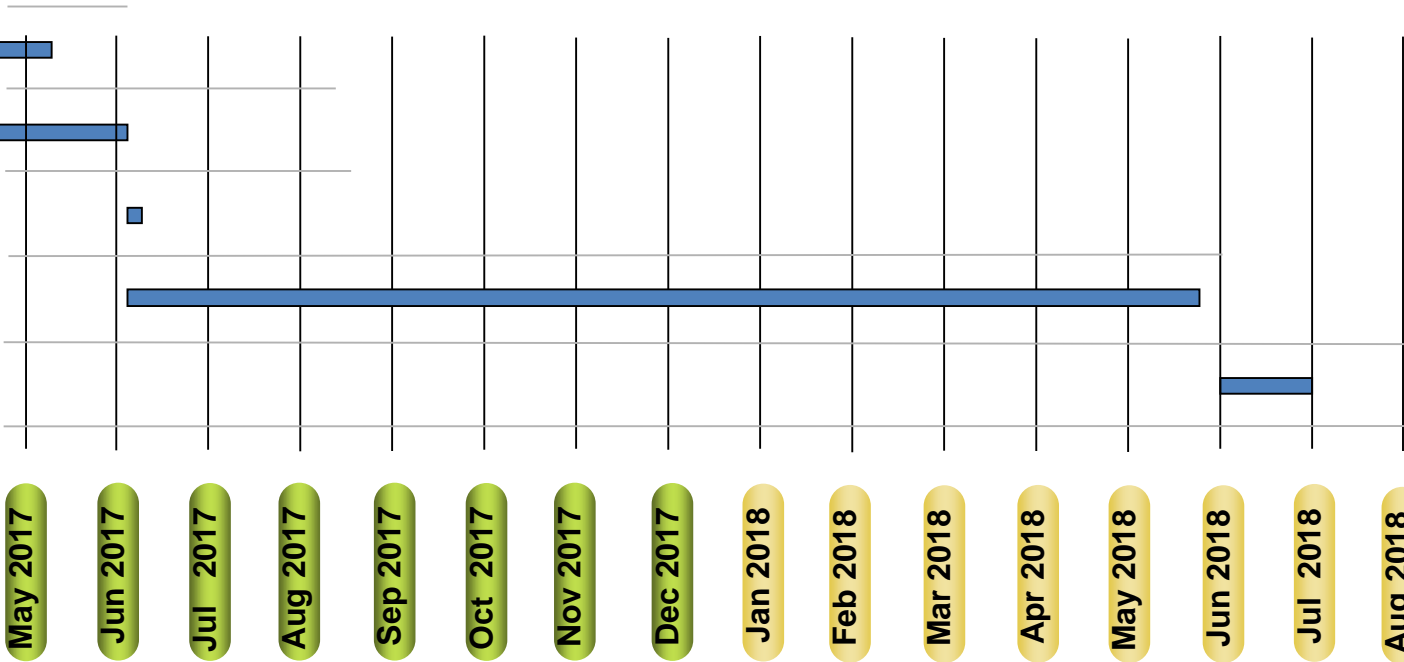
Permitting

GMP

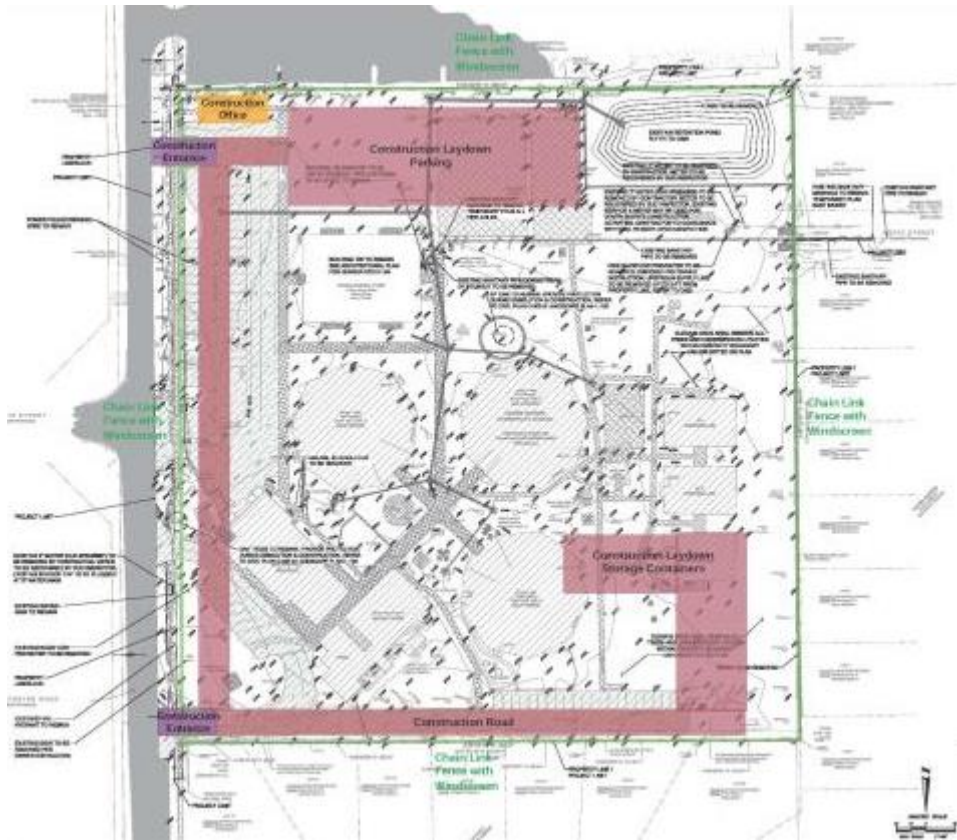
NTP – June 9, 2017

Building  
Construction

Move-in Date













Stonewall Jackson  
Middle School

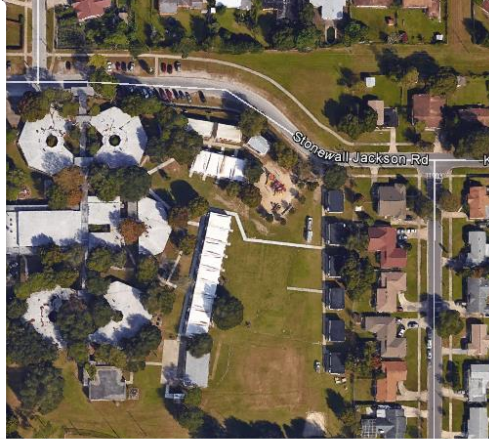
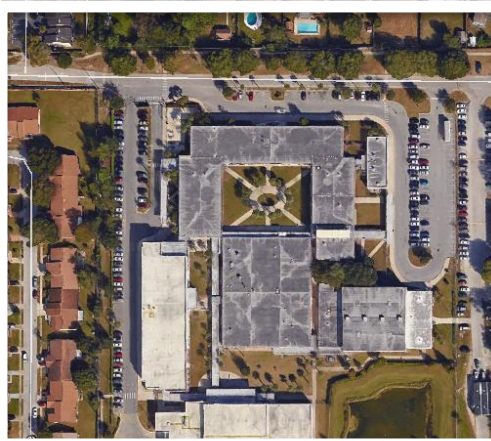
Engelwood Elementary  
Replacement School



Engelwood  
Neighborhood  
Center



Stonewall Jackson  
Middle School

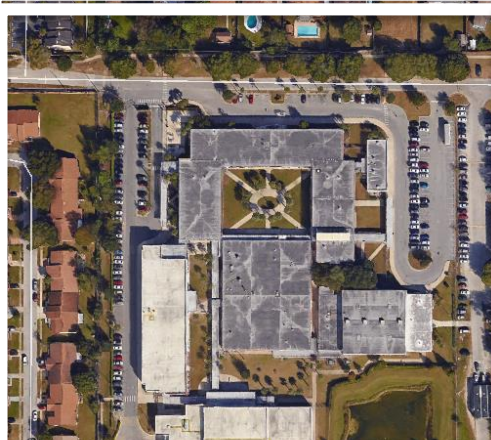


Engelwood Elementary  
Replacement School

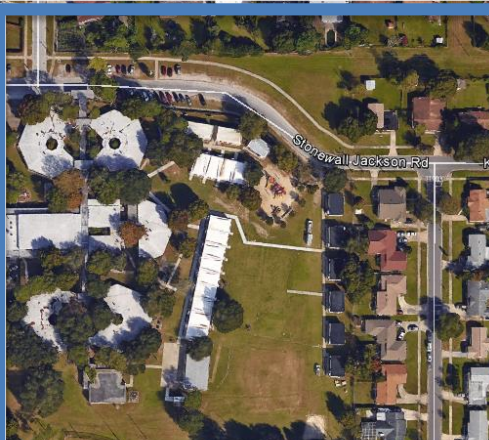


Engelwood  
Neighborhood  
Center

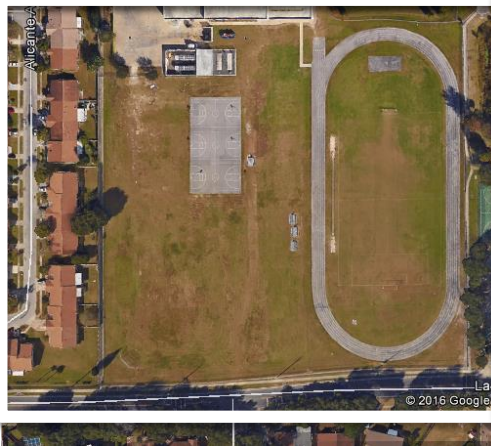
Stonewall Jackson  
Middle School



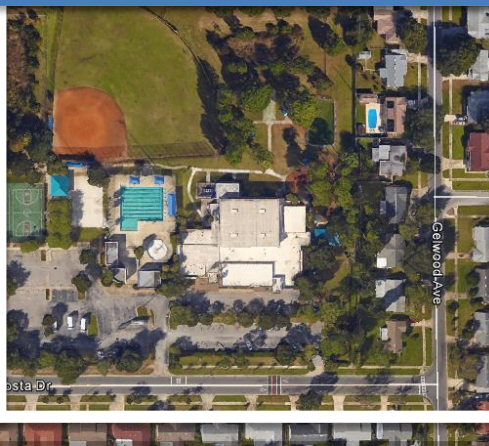
Dover Shores  
Swing Campus  
2017-2018



Engelwood Elementary  
Replacement School



Engelwood  
Neighborhood  
Center





Stonewall Jackson  
Middle School

Engelwood Elementary  
Replacement School

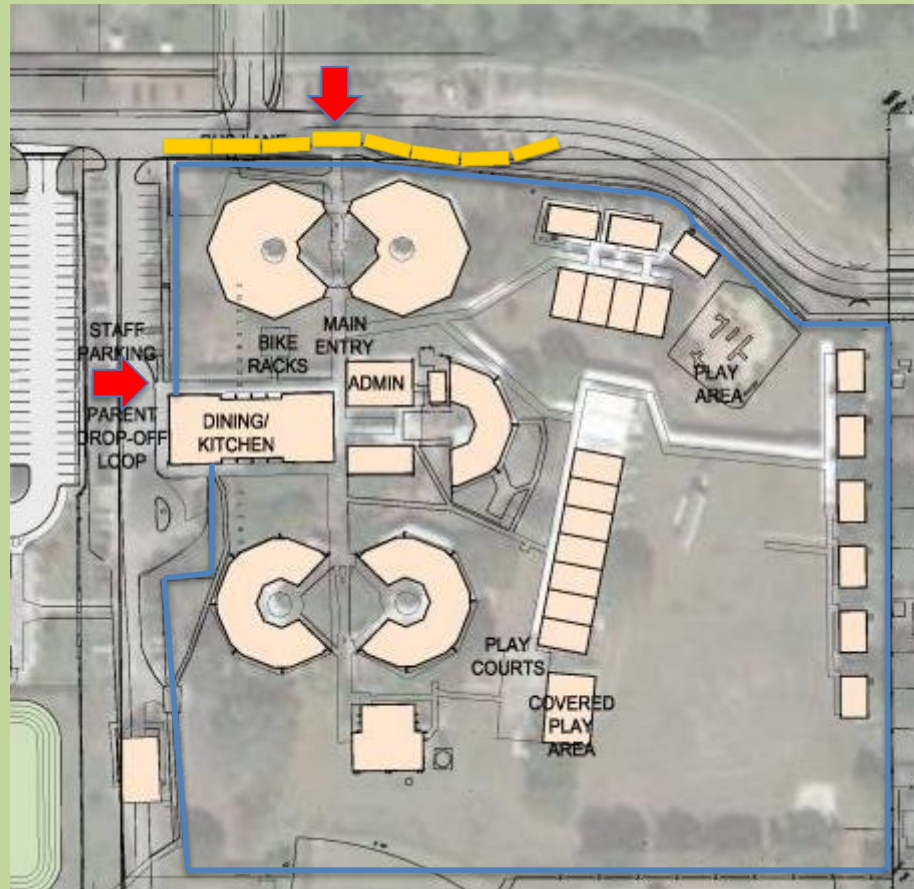


Dover Shores  
Swing Campus  
2017-2018

Engelwood  
Neighborhood  
Center









# THANK YOU!

Thank you to Orange County taxpayers for the ½ penny sales tax, which makes this construction possible.

# Questions & Answers

For more information, contact Facilities Meeting Organizer Lauren Roth at 407-317-3700.