



30% Design Community Meeting

Endeavor ES Comprehensive Renovation

October 26, 2023

Please sign in on your mobile device:
<https://communitymeeting.ocps.net/>



**Orange County
Public Schools**

Endeavor ES Meeting Agenda

Meeting October 26, 2023 at 6 p.m.

- Welcome: Board of Education Member Alicia Farrant
- Introductions: Andy Orrell,
Senior Manager, Facilities Communication
- Project Update
Architect: Zyscovich
- ThoughtExchange
- Questions and Answers
- Adjournment



Welcome Message

Alicia Farrant,
Board of Education Member



Introductions

Andy Orrell,
Senior Manager, Facilities Communication



CAMPUS AERIAL

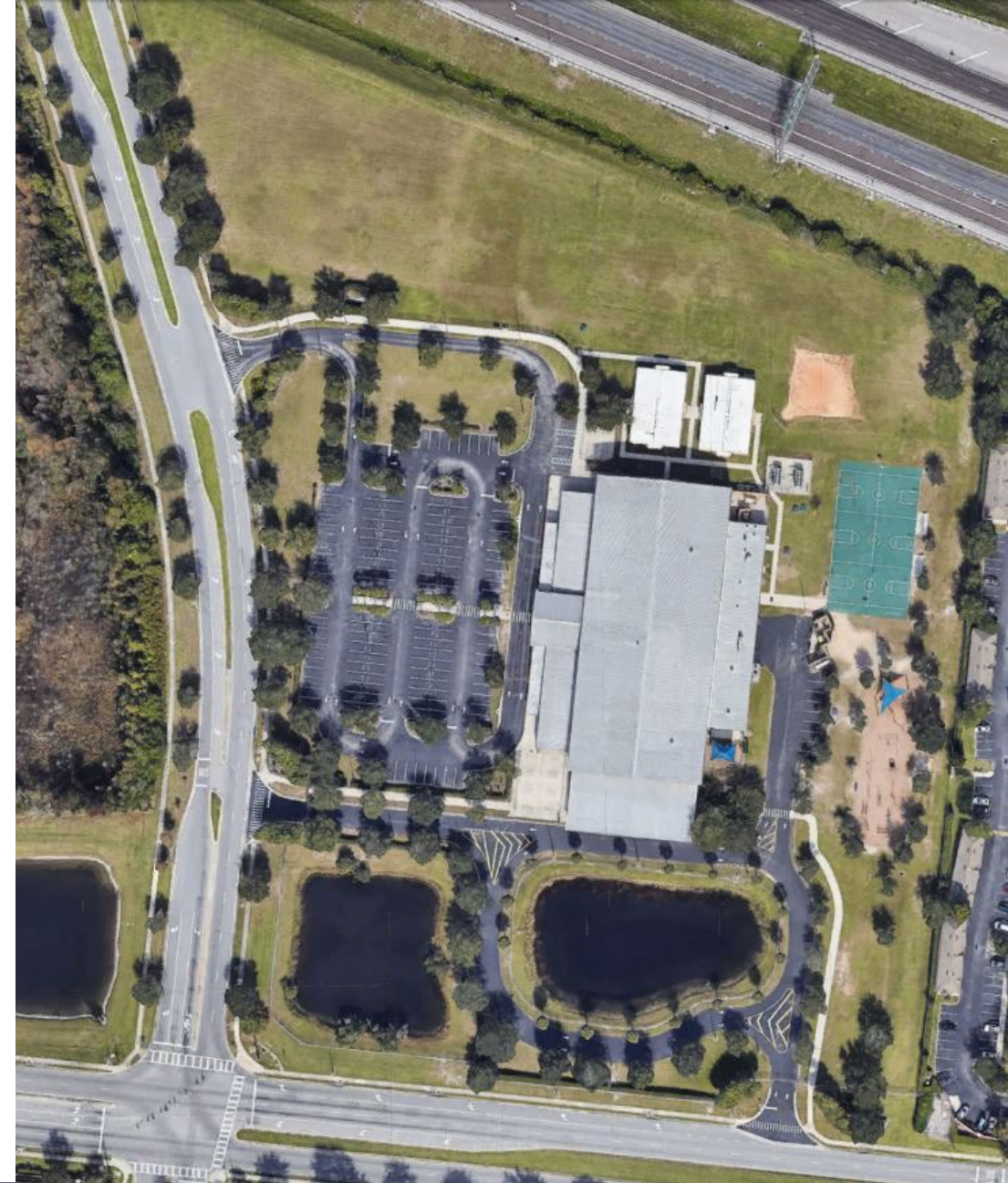
PROJECT DATA

649 Student Stations / 616 Enrollment

Building Area:
97,859 Gross SF

Parking Provided:
148 Spaces

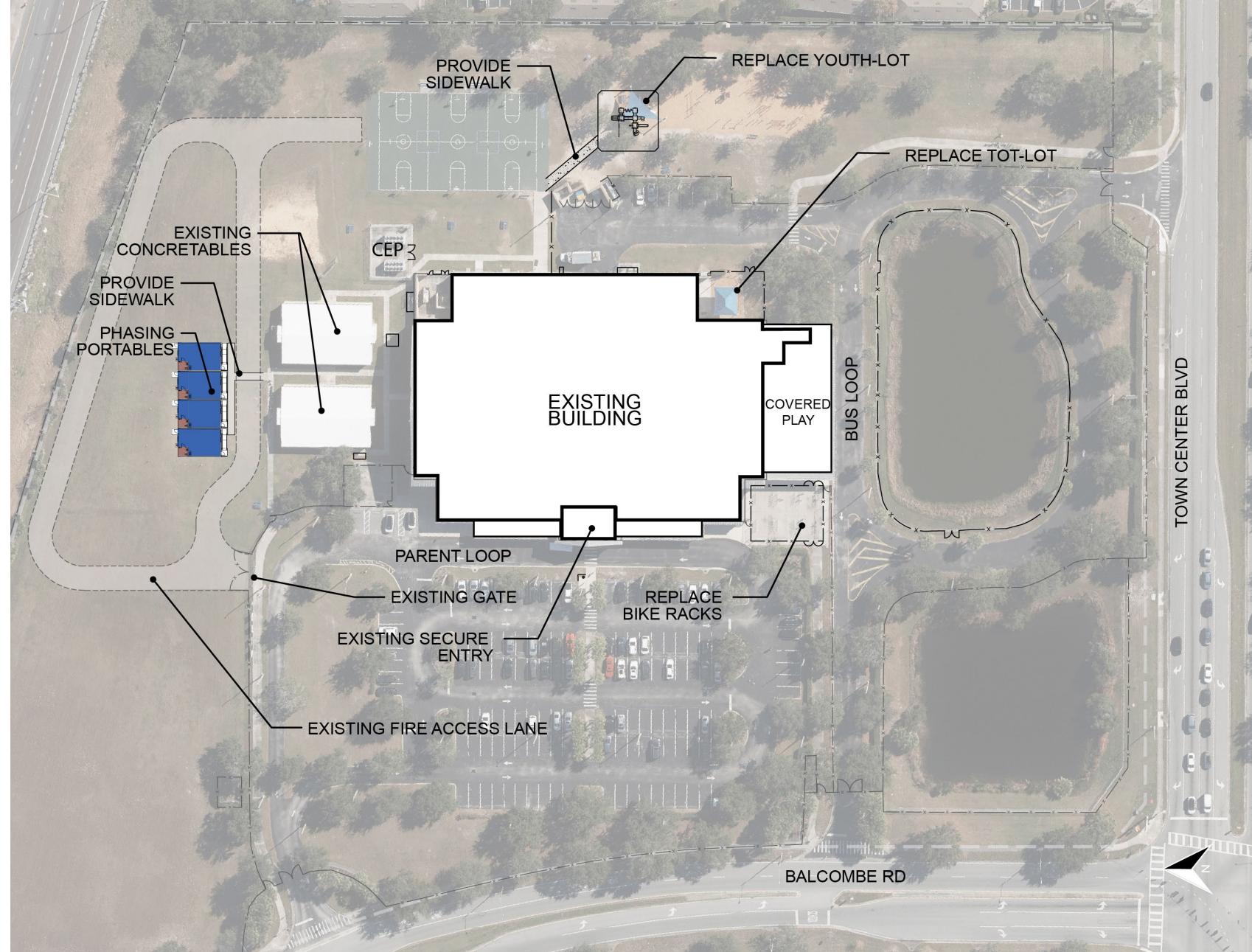
Site Area:
15.80 Acres



GROUND S

PROPOSED SCOPE OF WORK

- Re-landscape the campus and remove trees and shrubs in poor condition on select areas
- Replacement of Tot Lot
- New Tot Lot shade structure
- Replacement of Youth Lot with Universal Playground equipment
- New Youth Lot shade structure
- Replacement of bike racks



BUILDING ENVELOPE

PROPOSED SCOPE OF WORK

- Re-paint all exterior doors
- Re-paint all exterior stucco walls and clean brick walls
- Full replacement of gutter and downspouts
- Refurbish roof



BUILDING SYSTEMS

PROPOSED SCOPE OF WORK

- HVAC system upgrades
- Fire alarm system upgrades
- Exterior lighting improvements
- Upgrade interior lighting
- Upgrade security and intercom systems
- New sound systems
- New technology



BUILDING IMPROVEMENTS

PROPOSED SCOPE OF WORK

- New finishes, furniture and equipment
- Remodel of kitchen and cafeteria
- Remodel of CCTV studio
- Replacing damaged cabinets
- Replace interior signage
- New control booth at multi-purpose room
- New elevator finishes and refurbishment of elevator equipment
- New drinking fountains
- New water closets



SUSTAINABILITY

- Endeavor ES will be designed to meet Green Globes sustainable building standards metrics.

- **Planned Sustainable Design and Engineering Features Include:**

- Site

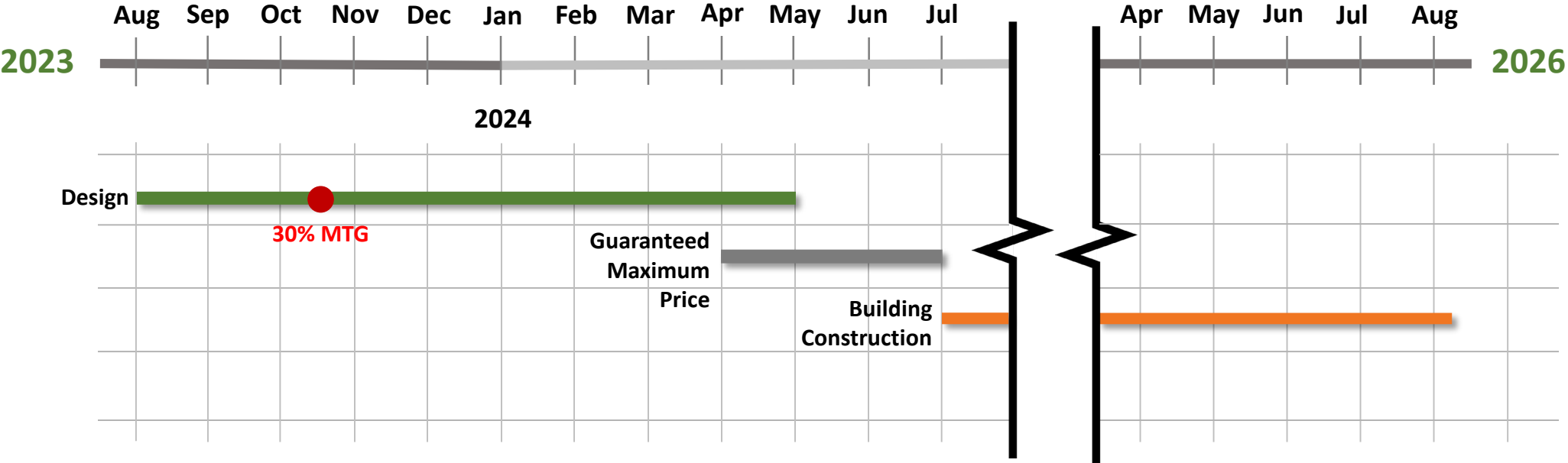
- Native/low water plants – reduce water consumption; and
 - Low Impact Design (LID) stormwater design.

- Building

- 10% more energy efficient than ASHRAE 90.1 Standard;
 - High Efficiency Chillers (8-15% energy reduction);
 - Light colored roof to reduce heat gain and improves energy
 - Performance; Energy efficient LED Lighting
 - Energy Star rated equipment;
 - Water saving toilets, faucets, and fixtures;
 - Most general classrooms have natural daylighting;
 - Thermal efficient windows/glazing film;
 - Enhanced building envelope thermal performance; and
 - Fully automated building controls systems.



Design & Construction Schedule



Thought Exchange



[Thought Exchange
Webpage](#)

- OCPS is using a new tool called Thought Exchange to gather input from students and staff and school community.
- Students, staff and parents are asked to answer one open-ended question with as many responses, and then moved onto the Rate Thoughts step.
- In the Rate step, they saw their responses and those shared by others and
- assigned 1 to 5 stars to each idea depending on how strongly they agreed or disagreed with it.
- **ThoughtExchange includes three steps:**
 1. **Share**: Respond to the question, independently and anonymously
 2. **Star**: Consider thoughts shared and rate them on a five-star scale.
 3. **Discover**: Learn what matters to the group by exploring thoughts and ratings.

Questions & Answers

This Community Meeting Presentation is posted
at facilities.ocps.net and on the School Board Member's page.

Our Promise. Your Support. Their Success.

Our Promise. Your Support. Their Success.

Our Promise. Your Support. Their Success.

Thank You



**Orange County
Public Schools**