

Orange County Public Schools



Welcome! Please sign in
on your mobile device:
<http://communitymeeting.ocps.net/>



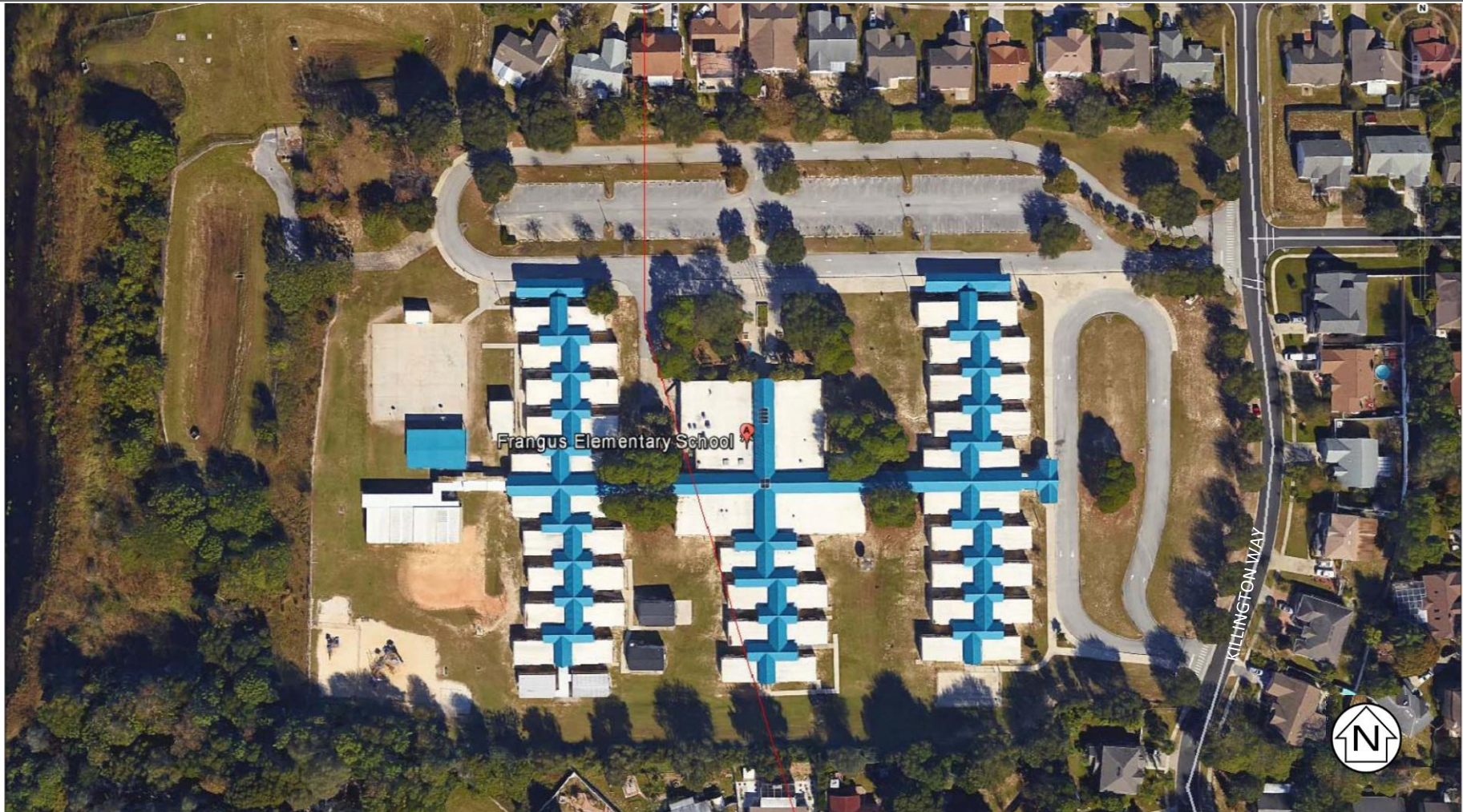
Frangus ES 100% Design/Construction Kick-off
District 4 Board Member Pam Gould
Community Meeting
March 15, 2017

Frangus Elementary School

Meeting Agenda

3/15/17, Media Center, 6pm

- Welcome – School Board Member - Pam Gould
 - Introductions –Lauren Roth, Facilities Communications
 - Project Update – Architect: BRPH Architects/Engineers, Inc.
Construction Manager: Williams Company
 - Questions and Answers
 - Adjournment



Existing Counts:

Maximum Observed Queuing: 88 Vehicles

Existing Parking: 104 Vehicles



Student Capacity: 750

1st Floor: 59,844 SF

Covered Play: 2,244 SF

2nd Floor: 29,146 SF

Total: 91,234 SF

Phase 1:

Total Queuing: 60 Cars

Percent Stacking: 8%

Total Parking: 91 Cars

Final:

Total Queuing: 127 Cars

Percent Stacking: 15.2%

Total Parking: 129 Cars



Student Capacity: 750

1st Floor: 59,844 SF

Covered Play: 2,244 SF

2nd Floor: 29,146 SF

Total: 91,234 SF

Phase 1:

Total Queuing: 60 Cars

Percent Stacking: 8%

Total Parking: 91 Cars

Final:

Total Queuing: 127 Cars

Percent Stacking: 15.2%

Total Parking: 129 Cars



Student Capacity: 750

1st Floor: 59,844 SF
 Covered Play: 2,244 SF
 2nd Floor: 29,146 SF
 Total: 91,234 SF

Phase 1:
 Total Queuing: 60 Cars
 Percent Stacking: 8%
 Total Parking: 91 Cars

Final:
 Total Queuing: 127 Cars
 Percent Stacking: 15.2%
 Total Parking: 129 Cars

Traffic Study

Recommendations

Separate Bus and Parent Loop

The existing parking lot will be modified to accommodate separate bus and parent loops

Queuing

Provide 101 vehicles stacking based on projected student capacity

Queuing for 127 vehicles provided (88 vehicles existing)

Parking

Provide 91 parking spaces based on projected student capacity

Parking for 129 vehicles provided (104 spaces existing)

Buses

Provide bus loop to accommodate 7 buses

Bus loop accommodates more than 14 buses (6 buses at existing school)



Example Interactive Display



Art



Music



Skills Lab







East



North



West



Frangus Elementary is designed to meet Green Globes sustainable building standards

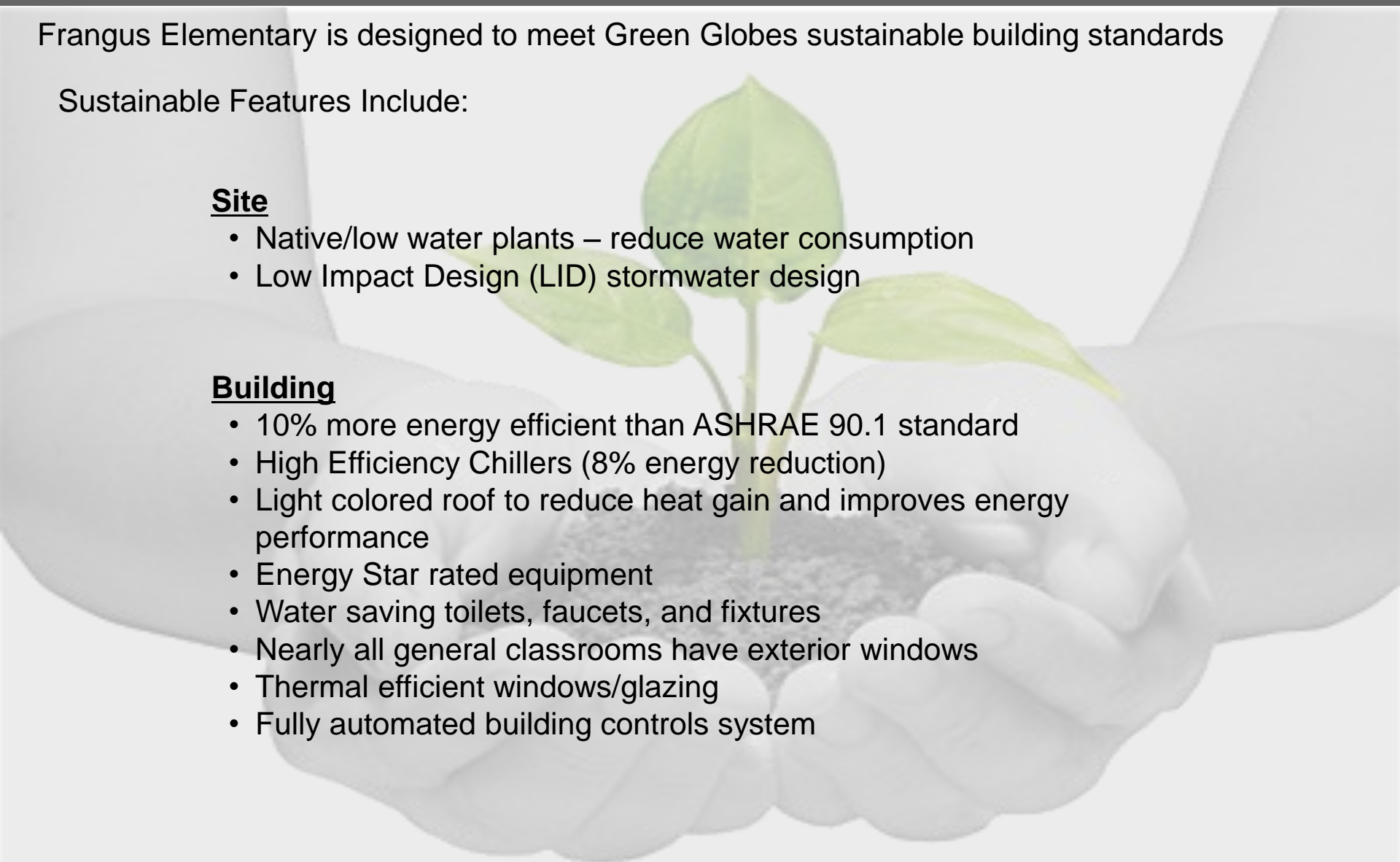
Sustainable Features Include:

Site

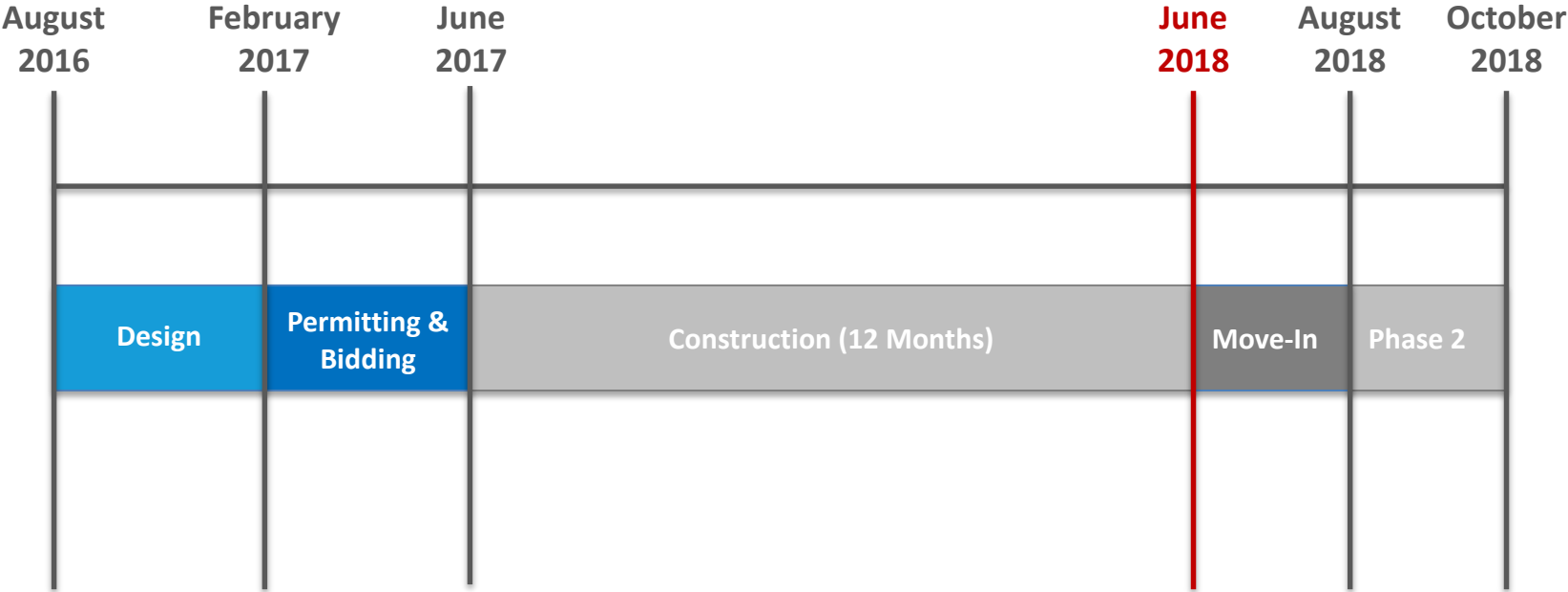
- Native/low water plants – reduce water consumption
- Low Impact Design (LID) stormwater design

Building

- 10% more energy efficient than ASHRAE 90.1 standard
- High Efficiency Chillers (8% energy reduction)
- Light colored roof to reduce heat gain and improves energy performance
- Energy Star rated equipment
- Water saving toilets, faucets, and fixtures
- Nearly all general classrooms have exterior windows
- Thermal efficient windows/glazing
- Fully automated building controls system



School	Year Open
Conway ES	2008
Wetherbee ES	2011
Rock Springs ES	2013
Spring Lake ES	2014
Ocoee ES	2014
Pineloch ES	2014
Lake Weston ES	2015
Tangelo Park ES	2016
Rock Lake ES (currently under construction)	2017
Oak Hill ES (currently under construction)	2017



THANK YOU!

Thank you to Orange County taxpayers for the ½ penny sales tax, which makes this construction possible.

Questions & Answers