

Orange County Public Schools



Welcome! Please sign in
on your mobile device:
<http://communitymeeting.ocps.net/>



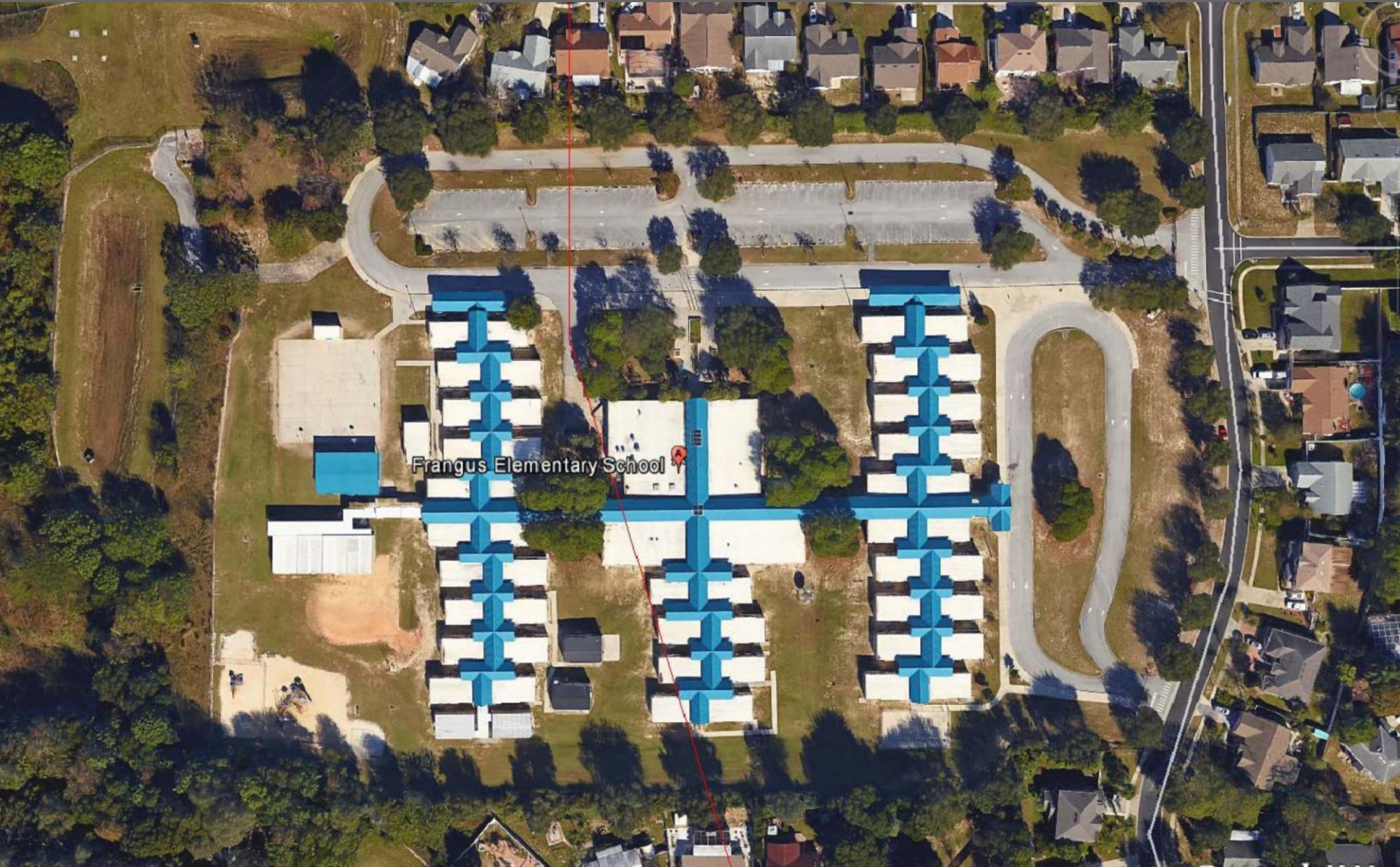
Frangus Elementary School Replacement Project
40% Construction Community Meeting
February 12, 2018

Frangus Elementary School Replacement Project 40% Construction Meeting Agenda

February 12, 2018 – 6:00 pm – Existing Frangus Elementary School Cafeteria

- Welcome: School Board Member Pam Gould
- Introductions: Lauren Roth, Facilities Communications
- Project Update:
 - Architect: BRPH Architects
 - Construction Manager: Williams Company
- Questions & Answers
- Adjournment

Orange County Public Schools



Existing Site Plan

Orange County Public Schools



Student Capacity: 750

1st Floor: 59,844 SF
Covered Play: 2,244 SF
2nd Floor: 29,146 SF
Total: 91,234 SF

Phase 1:
Total Queuing: 60 Cars
Percent Stacking: 8%
Total Parking: 91 Cars

Final:
Total Queuing: 178 Cars
Percent Stacking: 23.7%
Total Parking: 111 Cars



Orange County Public Schools



Student Capacity: 750

1st Floor: 59,844 SF
Covered Play: 2,244 SF
2nd Floor: 29,146 SF
Total: 91,234 SF

Phase 1:
Total Queuing: 60 Cars
Percent Stacking: 8%
Total Parking: 91 Cars

Final:
Total Queuing: 178 Cars
Percent Stacking: 23.7%
Total Parking: 111 Cars





Student Capacity: 750

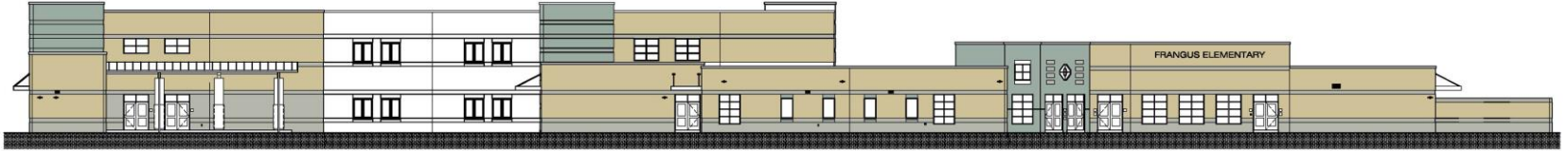
1st Floor: 59,844 SF
 Covered Play: 2,244 SF
 2nd Floor: 29,146 SF
 Total: 91,234 SF

Phase 1:
 Total Queuing: 60 Cars
 Percent Stacking: 8%
 Total Parking: 91 Cars

Final:
 Total Queuing: 178 Cars
 Percent Stacking: 23.7%
 Total Parking: 111 Cars



Orange County Public Schools



East



North



West

Orange County Public Schools



Construction Update and Milestones

- Notice to Proceed (NTP) was issued July 25, 2017.
- Tilt wall panels were completed on November 27, 2017.
- Structural Steel Erection was completed on January 12, 2018.
- Roofing work has started and will be completed by February 16, 2018.
- Window installation started and will be completed by February 15, 2018.
- Exterior painting to start late February.
- Interior work is in progress.
- Project will be 40% complete as of February, 2018.
- Project remains on schedule for Substantial Completion of October 30, 2018.

Orange County Public Schools



Aerial Photo date 2/20/17

Orange County Public Schools



Aerial Photo date 8/4/17

Orange County Public Schools



Aerial Photo date 8/22/17

Orange County Public Schools



Aerial Photo date 9/21/17

Orange County Public Schools



Aerial Photo date 10/24/17

Orange County Public Schools



Aerial Photo date 11/20/17

Orange County Public Schools



Aerial Photo date 12/18/17

Orange County Public Schools



Aerial Photo date 1/18/18

Orange County Public Schools



Window Installation

Orange County Public Schools



Play Area Slab on Grade



Utility Installation

Orange County Public Schools



Mechanical Rough-in

Interior Framing

Orange County Public Schools



Roofing

QUESTIONS?