

Orange County Public Schools



Welcome! Please sign in
on your mobile device:
<http://communitymeeting.ocps.net/>



Hillcrest Elementary School Comprehensive
School Board Member District 6 – Nancy Robinson
100% Design / Construction Kick-Off
April 5, 2017

100% Design / Construction Kick-Off

April 5, 2017, Hillcrest Elementary School, 6:00 PM

- Welcome – Nancy Robinson - District 6
School Board Member
- Introductions – Lauren Roth - Senior Manager
Facilities Communications
- Project Update – Architect: C.T. Hsu + Associates, PA
Construction Manager: Wharton Smith, Inc.
- Questions and Answers
- Adjournment

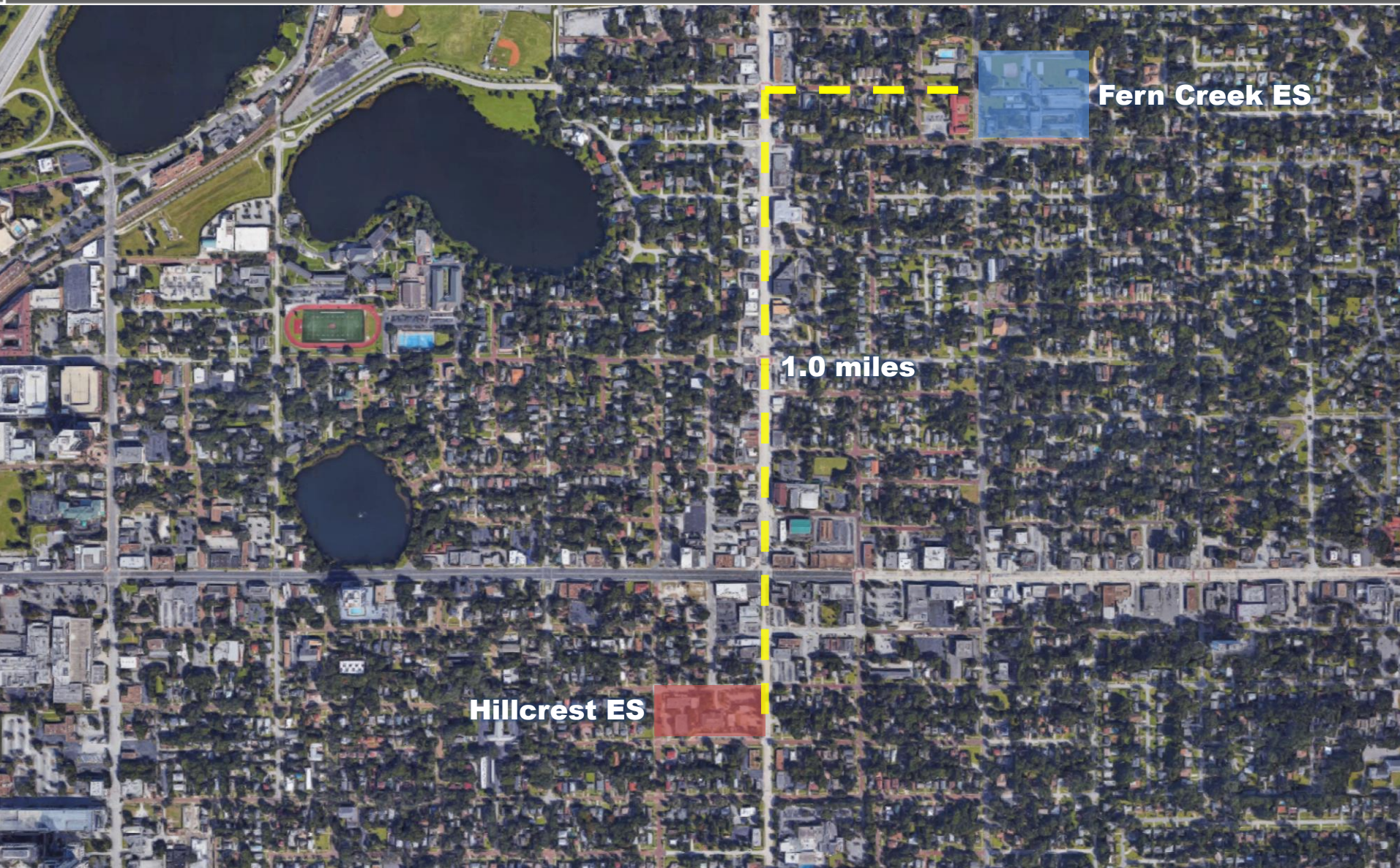
Year	Movement
2017-18	Currently zoned Hillcrest students attend classes at Fern Creek ES campus
2018-19	Hillcrest Elementary re-opens for students

Orange County Public Schools



Aerial of Swing School – Fern Creek ES

Orange County Public Schools



Traffic & Pedestrian Study

Offsite Vehicular Improvements

Accepted & Approved Recommendations:

- Modify pavement markings on Concord Street approaching Mills Avenue to provide a left/through lane and a dedicated right turn lane. The existing pavement is approximately 30 feet wide, which allows three 10' lanes (2 eastbound approach lanes and 1 westbound departure lane).
- Reduce the available width for through traffic on Concord Street by restriping the road to provide a center turn lane or a westbound left turn lane approaching the parent dropoff/pick-up loop. This lane will help store queuing vehicles on Concord Street without blocking the through movements. The introduction of a third lane on Concord will also help reduce undesirable drop-offs/pick-ups in the right-of-way near the school entrance.
- Restore bidirectional flow on Hyer Avenue to better distribute and diffuse traffic leaving the school during peak operations. Allowing bi-directional flow on the Hyer Avenue allows traffic exiting the school access to the signal at Mt Vernon Street and Mills Avenue.

Traffic & Pedestrian Study

Offsite Pedestrian Improvements

Accepted & Approved Recommendations:

- Mills Avenue & Concord Street – ADA compliant pedestrian ramp at the southwest corner, crosswalks marked, & truncated domes to assist visually impaired pedestrians.
- Mills Avenue & Mt Vernon Street – Truncated domes to assist visually impaired pedestrians.
- Thornton Avenue & Concord Street – A crossing is not necessary at this location based on the proposed school layout. Truncated domes to assist visually impaired pedestrians.
- Hyer Avenue & Concord Street – Truncated domes to assist visually impaired pedestrians.
- Hyer Avenue & Mt Vernon Street – Ramps on the northwest and northeast quadrants & truncated domes to assist visually impaired pedestrians.

Traffic & Pedestrian Study Onsite Improvements

The Accepted & Approved Plan Provides:

- The bus lane and parent drop-off/pick-up loop are separated in accordance with OCPS policy and recommended best practices to minimize risk and friction at the school.
- The proposed site plan separates staff access from parent access, which further enhances efficient operations during the peaks.
- The site layout provides internal queue storage of 60 vehicles in addition to the 68 parking spaces designated for parents. The queue storage is more than 10% of the school's population. Including the parking spaces provided, the site has capacity to store nearly 25% of the school's population.
- The queue storage capacity is approximately ½ of the 124 vehicles arriving at the site during the peak of the morning drop-off operations, which indicates that minimal queue spill back to the public street will occur during these operations.

	Current	Proposed
Parking Spaces	49	134
Queuing Capacity	6	60

HILLCREST ELEMENTARY is designed to meet Green Globes sustainable building standards

Sustainable Features Include:

Site

- Native/low water plants – reduce water consumption
- Low Impact Design (LID) stormwater design

Building

- 10% more energy efficient than ASHRAE 90.1 standard
- High Efficiency Chillers (8% energy reduction)
- Light colored roof to reduce heat gain and improves energy performance
- Energy Star rated equipment
- Water saving toilets, faucets, and fixtures
- All general classrooms have exterior windows
- Thermal efficient windows/glazing
- Fully automated building controls system

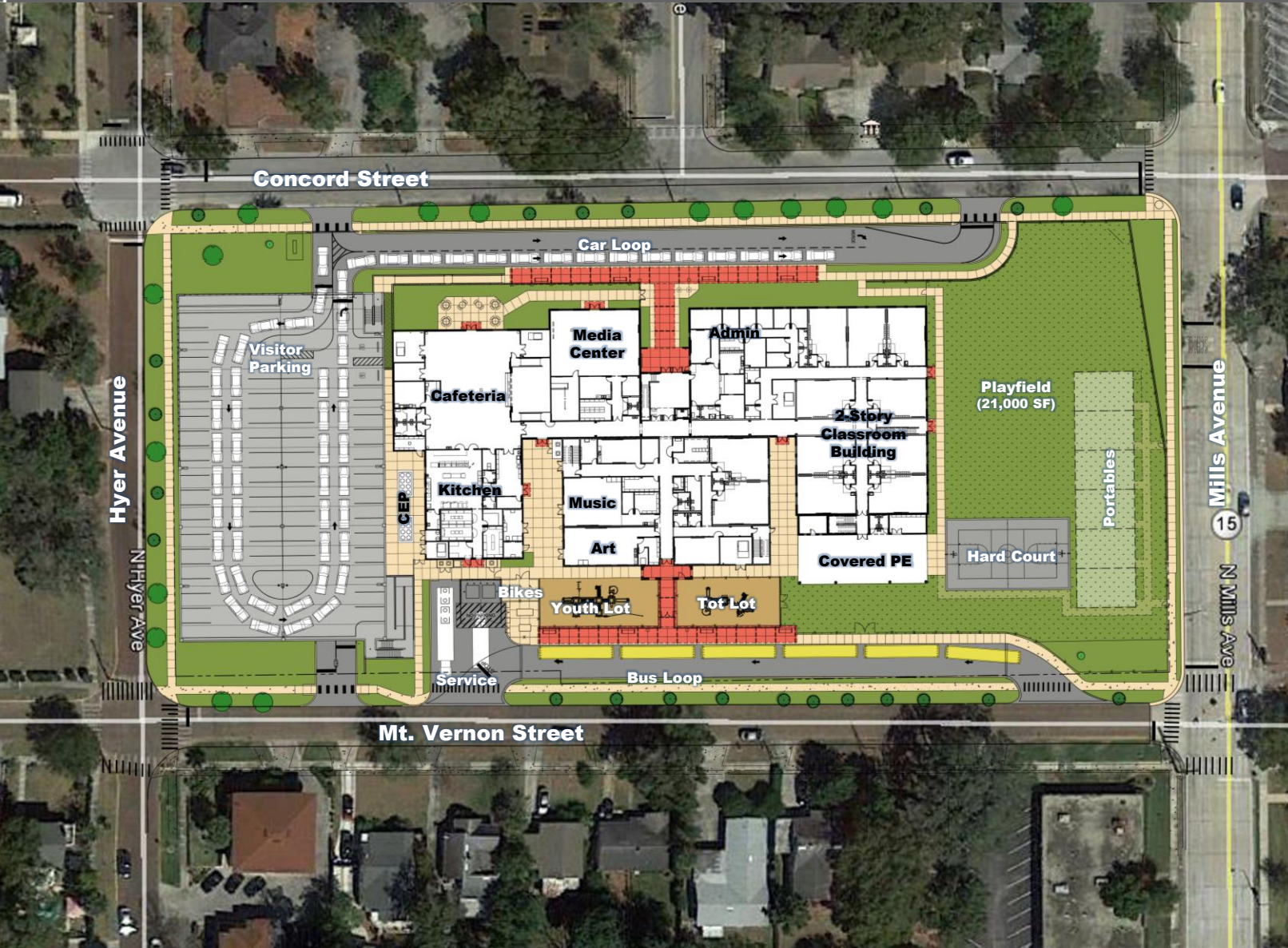
Proposed Scope of Work

- Demolish Buildings 100 & 200
- Renovate Existing Building 300
- Build new campus which will include:
 - Administration
 - Kitchen/Cafeteria/Multi-Purpose
 - Media Center
 - Classrooms
 - Skills Labs and Resource Rooms
 - Technology Labs
 - Music & Art Labs
 - Play Field
 - Playgrounds – Tot Lot & Youth Lot

Orange County Public Schools



Orange County Public Schools



Project Data

Capacity:
500 Student Stations

Building Area:
73,583 Gross SF

Parking Provided:
134 Spaces

Car Queue Provided:
60 Cars

Bus Queue Provided:
6 Buses

Bus Canopy:
160 ft

Parent Canopy:
180 ft

Site Area:
+/- 3.8 Acre



Orange County Public Schools



Orange County Public Schools



South View

Orange County Public Schools



Example - Typical Classroom

Orange County Public Schools



Orange County Public Schools



Example - Media Center

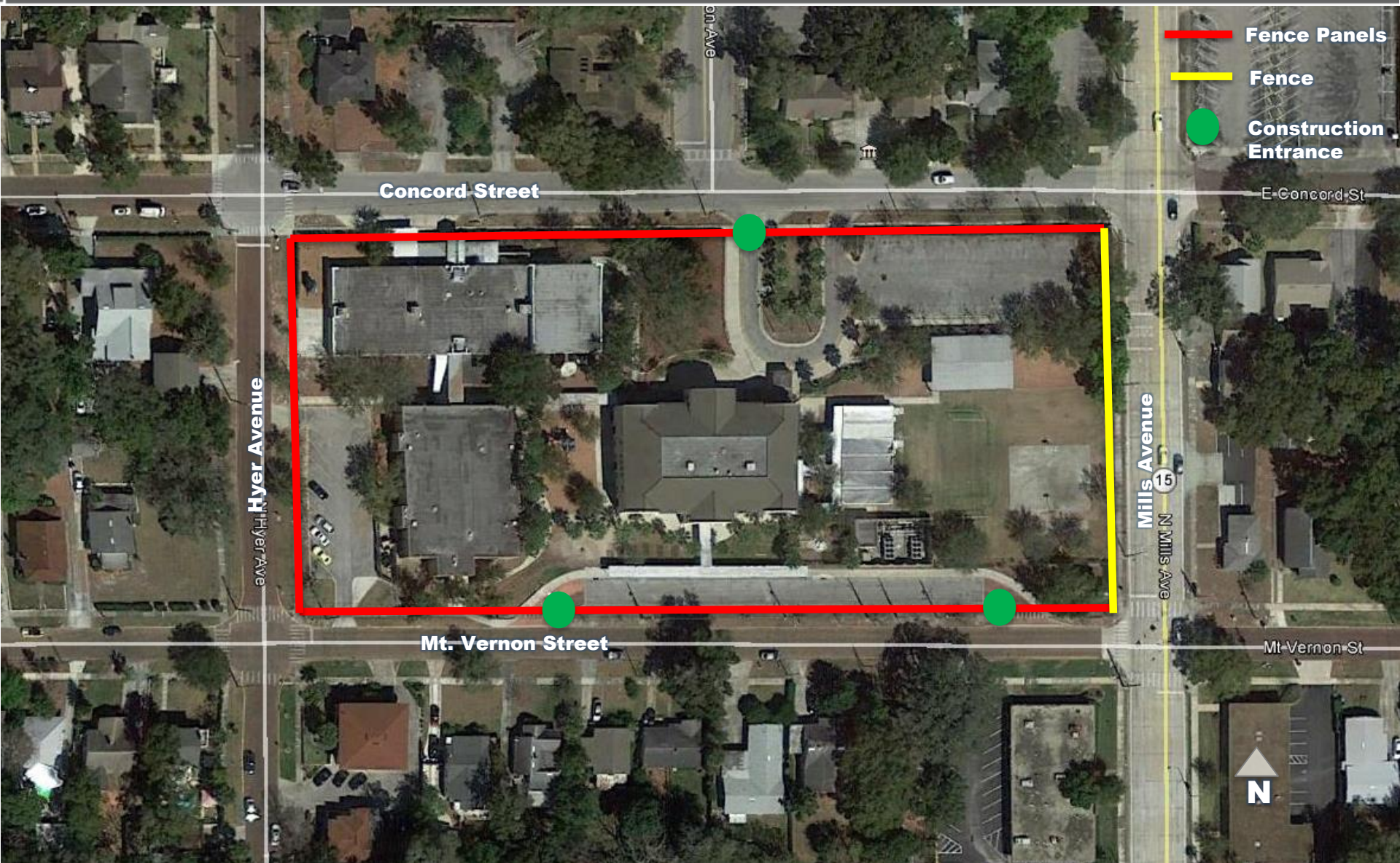
Orange County Public Schools



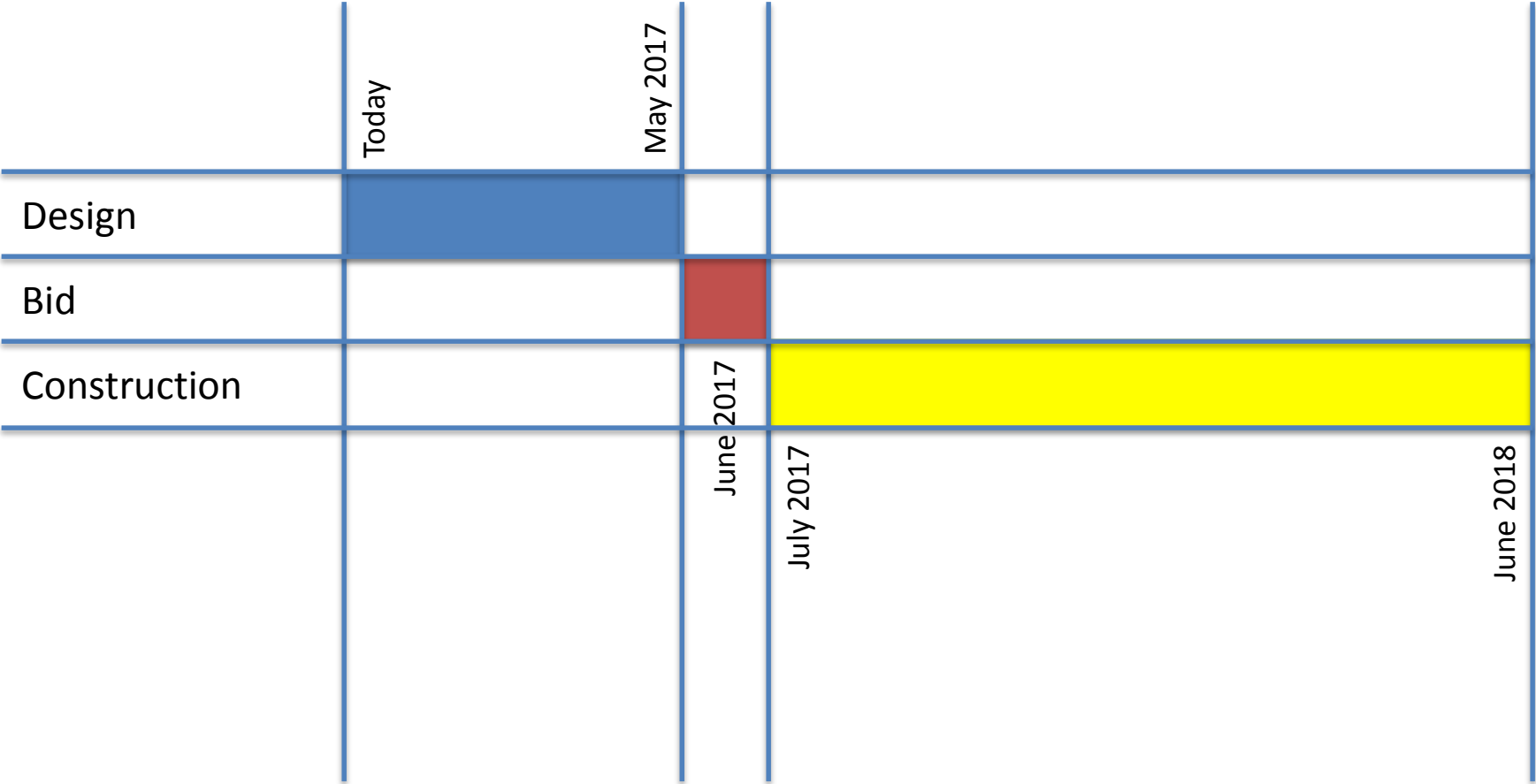
Example - Multi Purpose Room



Orange County Public Schools



Orange County Public Schools



THANK YOU!

Thank you to Orange County taxpayers for the ½ penny sales tax, which makes this construction possible.

Questions & Answers