

February 6, 2020

40% Construction Community Meeting

Magnolia School

Please sign in on your mobile device: <http://communitymeeting.ocps.net/>



**Orange County
Public Schools**

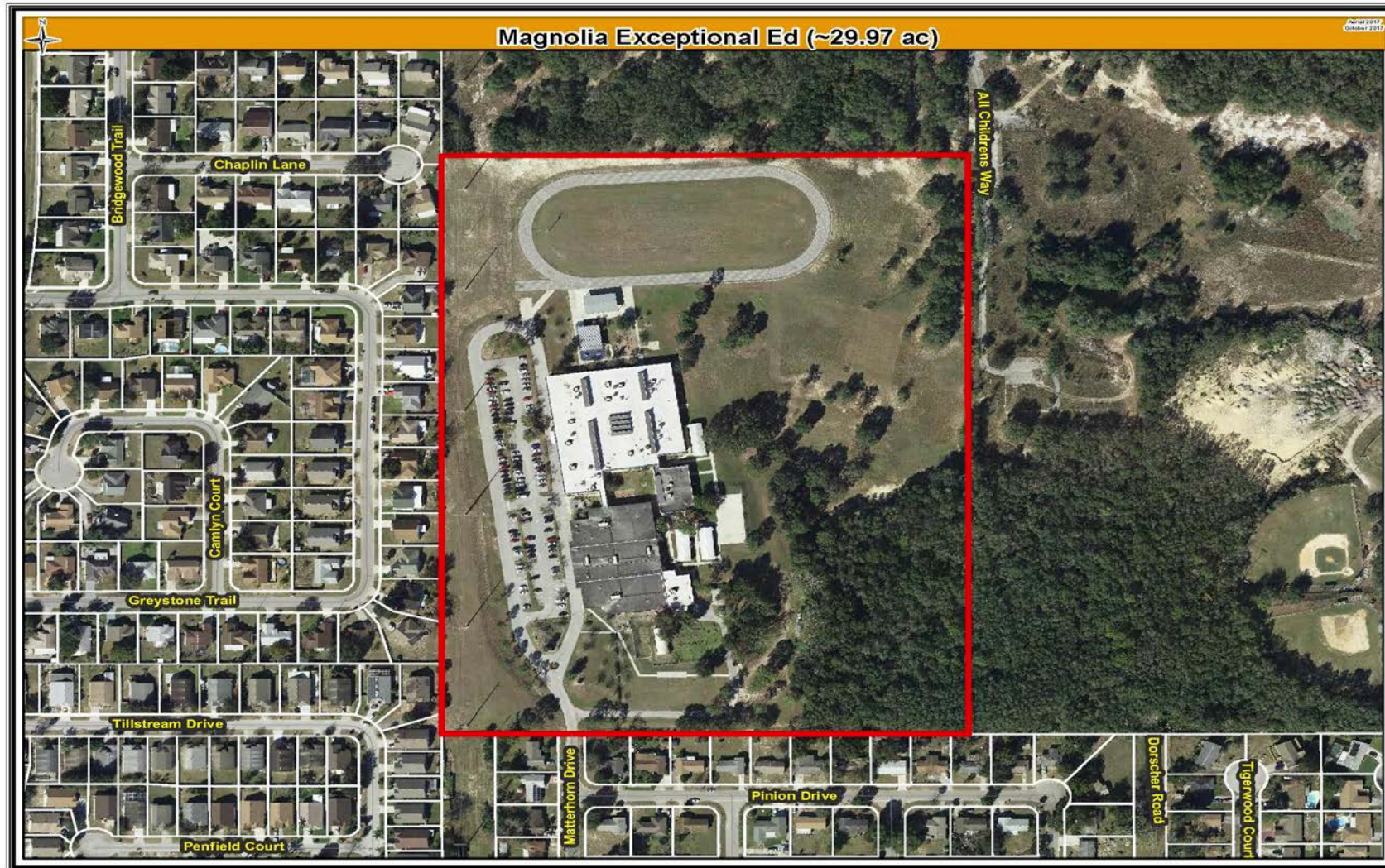
Magnolia School Meeting Agenda

February 6, 2020

- Welcome — School Board Member: District 5, Dr. Kathleen “KAT” Gordon
- Introductions — Facilitator: Jessma Lambert, OCPS Facilities Construction Planning Director
- Project Update — Architect: **Harvard Jolly** 
Contractor: **CPPI** 
- Questions and Answers
- Adjournment

Orange County Public Schools

Site Aerial Map



Orange County Public Schools

Master Site Plan

Project Data

Site Area
30.02 Acres

Magnolia School
Grades 6-12

Student Capacity
120 Students

Building Area
70,674 Gross SF

Parking Provided
160 Spaces

Learning Center
Grades K-12

Student Capacity
159 Students

Building Area
74,713 Gross SF

Parking Provided
163 Spaces



Orange County Public Schools

Site Plan – Magnolia School

Project Data

Site Area
30.02 Acres

Magnolia School
Grades 6-12

Student Capacity
120 Students

Building Area
70,674 Gross SF

Parking Provided
160 Spaces

Learning Center
Grades K-12

Student Capacity
159 Students

Building Area
74,713 Gross SF

Parking Provided
163 Spaces



Orange County Public Schools

Rendering



Orange County Public Schools

Similar Interior Examples



Admin Reception



Multi-Purpose Room

Orange County Public Schools

Similar Interior Examples



Media Center



TV Studio

Orange County Public Schools

Similar Interior Examples



Art



Science

Orange County Public Schools

Similar Interior Examples



Kitchen

Orange County Public Schools

Similar Interior / Exterior Examples



Hardcourt



Multi-Purpose PE Room

Orange County Public Schools

Similar Exterior Examples



Greenhouse



Play Pavilion

Orange County Public Schools

Aerial Site Photos / Development Progress



July 2019

Orange County Public Schools

Aerial Site Photos / Development Progress



August 2019



ESE Campus Consolidation
08.21.18



Magnolia School

Orange County Public Schools

Aerial Site Photos / Development Progress



September 2019



ESE Campus Consolidation

09.24.19



Magnolia School

Orange County Public Schools

Aerial Site Photos / Development Progress



ESE Campus Consolidation
10.23.19



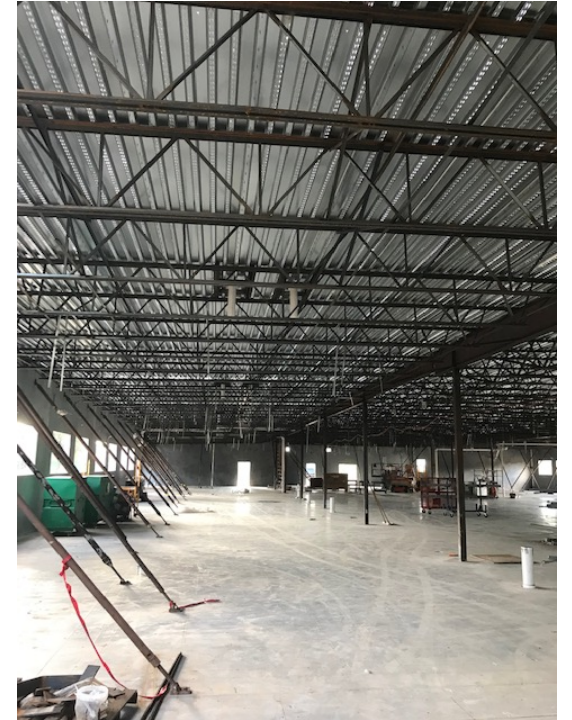
October 2019

Orange County Public Schools

Aerial Site Photos / Development Progress



November 2019



ESE Campus Consolidation

11.21.19



Orange County Public Schools

Aerial Site Photos / Development Progress



December 2019



ESE Campus Consolidation
12.19.19



Orange County Public Schools

Aerial Site Photos / Development Progress



January 2020



ESE Campus Consolidation
1.24.20



Orange County Public Schools

Upcoming Milestones



- Complete Interior Framing by February 2020
- HVAC Chiller Start-Up by March 2020
- Permanent Power by March 2020
- Playfields Complete by April 2020
- Substantial Completion Date June 1, 2020

Orange County Public Schools

Sustainability



Site

- Native/low water plants – reduce water consumption
- Low Impact Design (LID) stormwater design

Building

- 10% more energy efficient than ASHRAE 90.1 standard
- Lighting system and power outlets designed to turn lights and power off in unoccupied spaces (energy reduction)
- High Efficiency Chillers (10% energy reduction)
- Light colored roof to reduce heat gain and improves energy performance
- Energy Star rated equipment
- Water saving toilets, faucets, and fixtures
- All classrooms have daylighting
- Over 75% of ALL spaces have daylighting
- Thermal efficient windows/glazing

Questions and Answers

Facilities contact person for School Board District 5
Jessma Lambert
Facilities Director, Construction Planning
407-317-3700

Thank you to Orange County taxpayers for the ½ penny sales tax, which makes this construction possible.