

April 30, 2019

Design Community Meeting

Meadow Woods MS Comprehensive Renovation

Please sign in on your mobile device: <http://communitymeeting.ocps.net/>



**Orange County
Public Schools**

Meadow Woods Middle School Meeting Agenda

Meeting Date & Time

- Welcome: Linda Kobert - District 3 School Board Member
- Introductions: Lauren Roth – Director of Facilities
Construction Planning
- Project Update: Architect: C.T. Hsu + Associates, PA /
Construction Manager: Wharton-Smith / Votum Construction
- Questions and Answers
- Adjournment

CAMPUS AERIAL PROJECT DATA

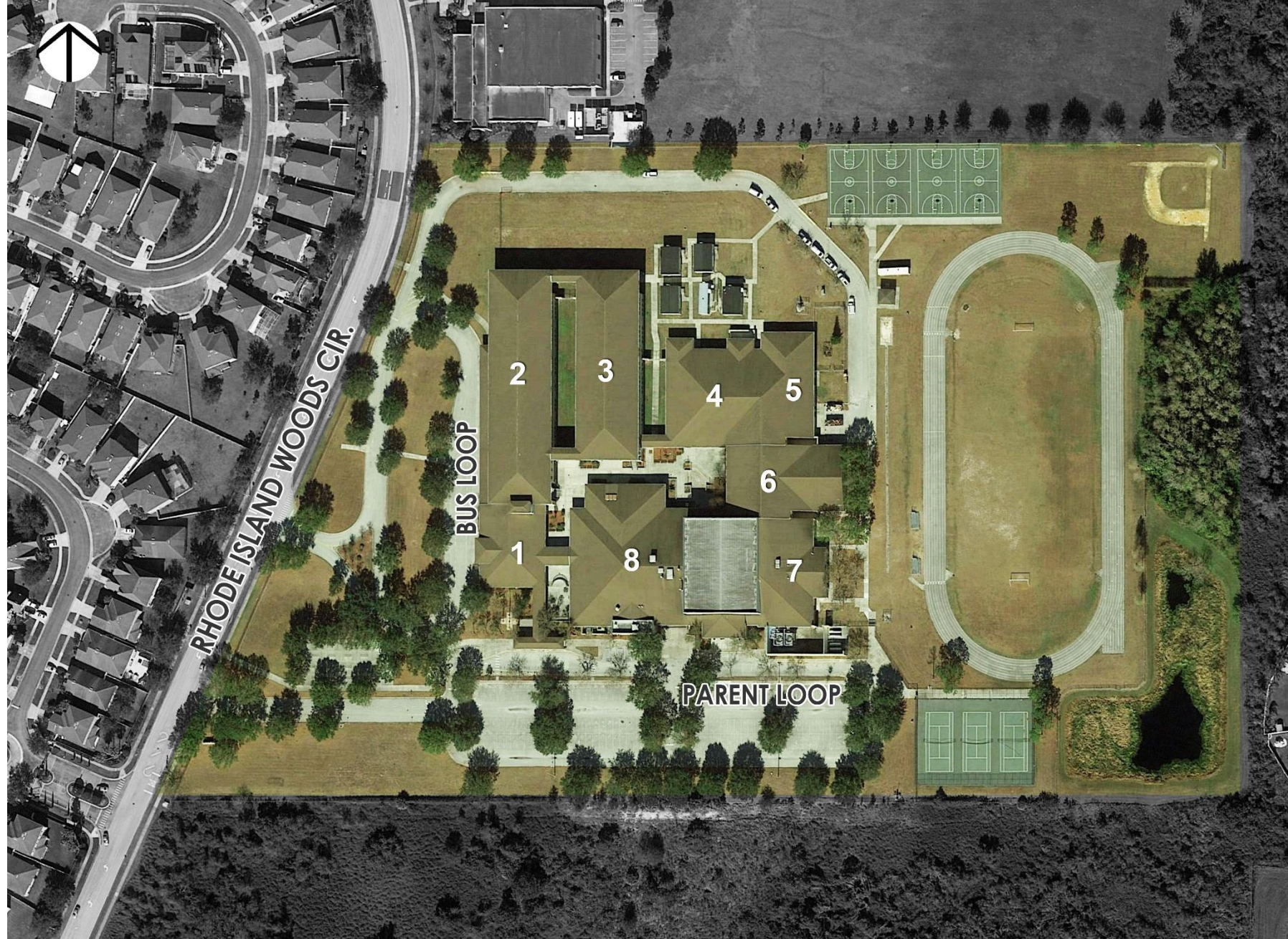
1209 Student Stations for
1088 Capacity

Building Area:
168,670 Gross SF

Parking Provided:
150 Spaces

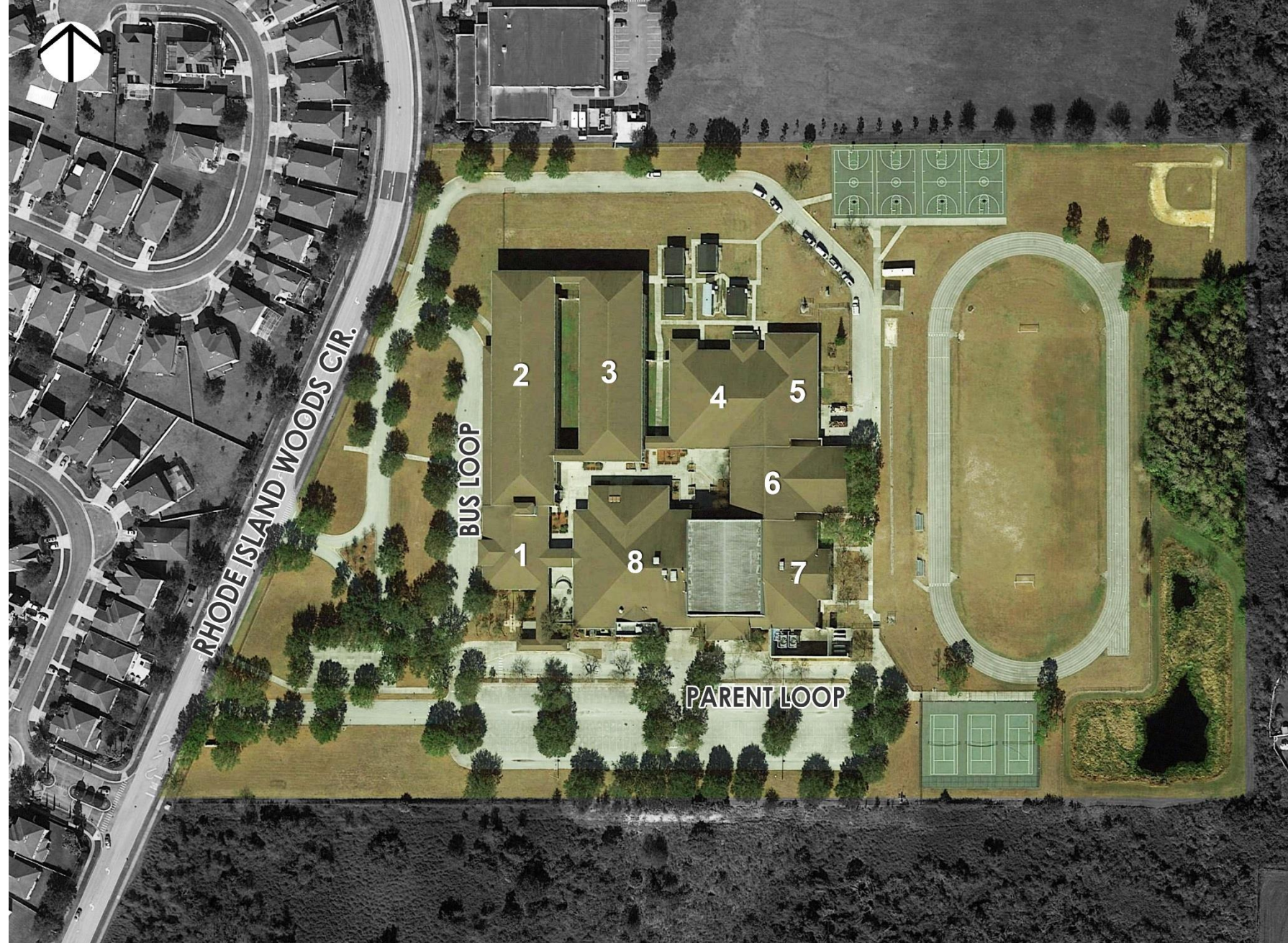
Site Area:
25 Acre

- Administration - Building 1
- Classroom - Building 2
- Classroom - Building 3
- Media Center - Building 4
- Vocational Tech - Building 5
- Music - Building 6
- Gym - Building 7
- Cafeteria - Building 8



SITE IMPROVEMENTS PROPOSED SCOPE OF WORK

- Replacement of galvanized chain link fencing with black coated vinyl chain link fencing
- Refurbish athletic amenities
- New basketball courts
- New tennis courts
- Selective repair/replacement of sidewalks to comply with ADA requirements
- Covered outdoor dining area



BUILDING ENVELOPE

PROPOSED SCOPE OF WORK

- Repair louvers, wall penetrations and exterior wall systems as required
- Upgrade building envelope to meet energy code requirements
- Replace Low Slope Roofing
- Repair Shingle Roofing

BUILDING SYSTEMS

PROPOSED SCOPE OF WORK

HVAC system upgrades
Fire alarm system upgrades
Exterior lighting improvements
Lightning protection system
Upgrade interior lighting
Selective plumbing fixtures refurbishment
Upgrade security and intercom systems



Sustainability

Building

- 10% more energy efficient than ASHRAE 90.1 standard
- High Efficiency Chillers (15% energy reduction)
- Light colored roof to reduce heat gain and improves energy performance
- Energy Efficient LED Lighting
- Energy Star rated equipment
- Water saving toilets, faucets, and fixtures

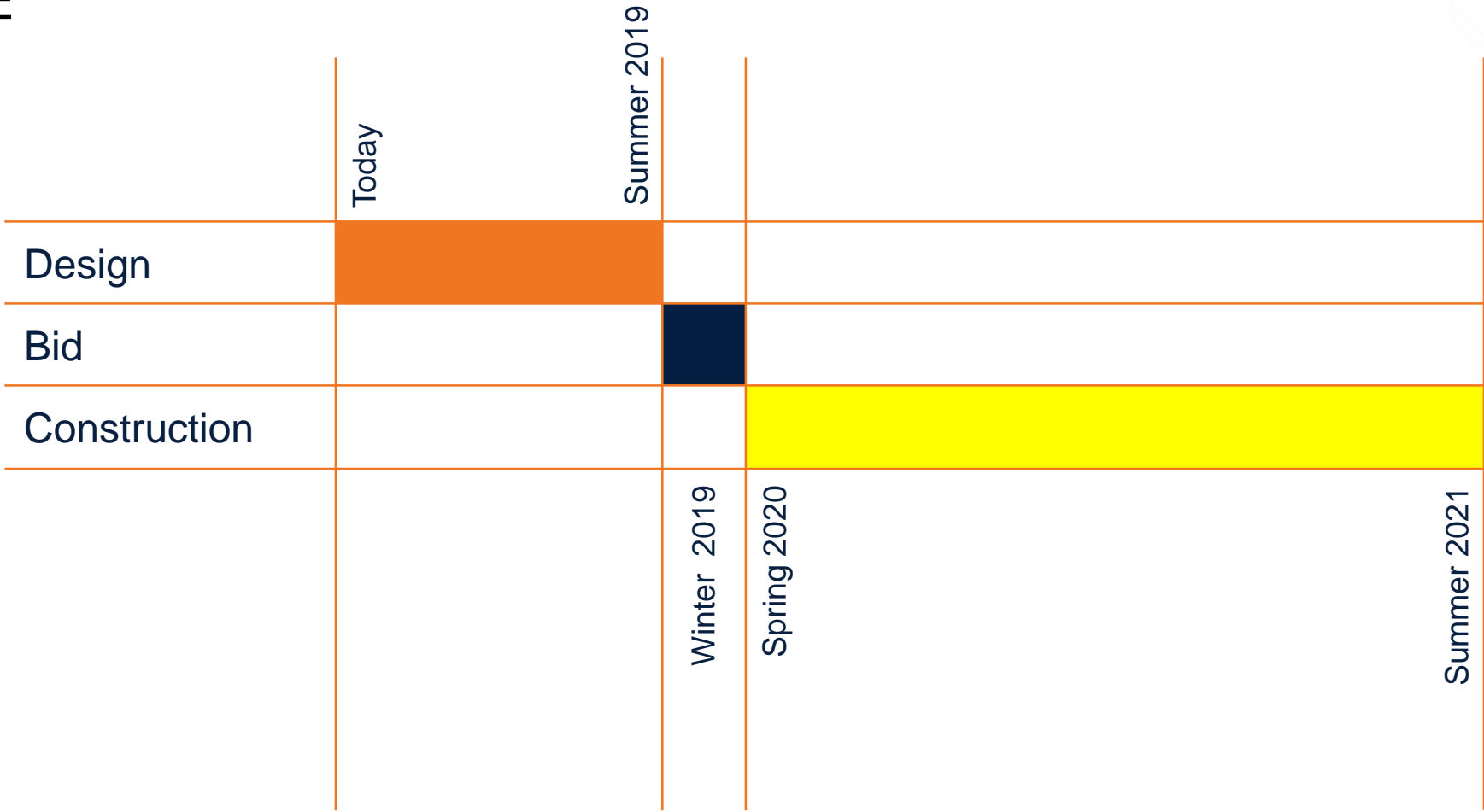


BUILDING IMPROVEMENTS PROPOSED SCOPE OF WORK

- Partial remodel of administrative area offices to meet secure point of entry and administrative needs
- Refurbish restrooms
- Selective refurbishment of buildings
- New finishes
- New furniture & equipment



PROPOSED SCHEDULE

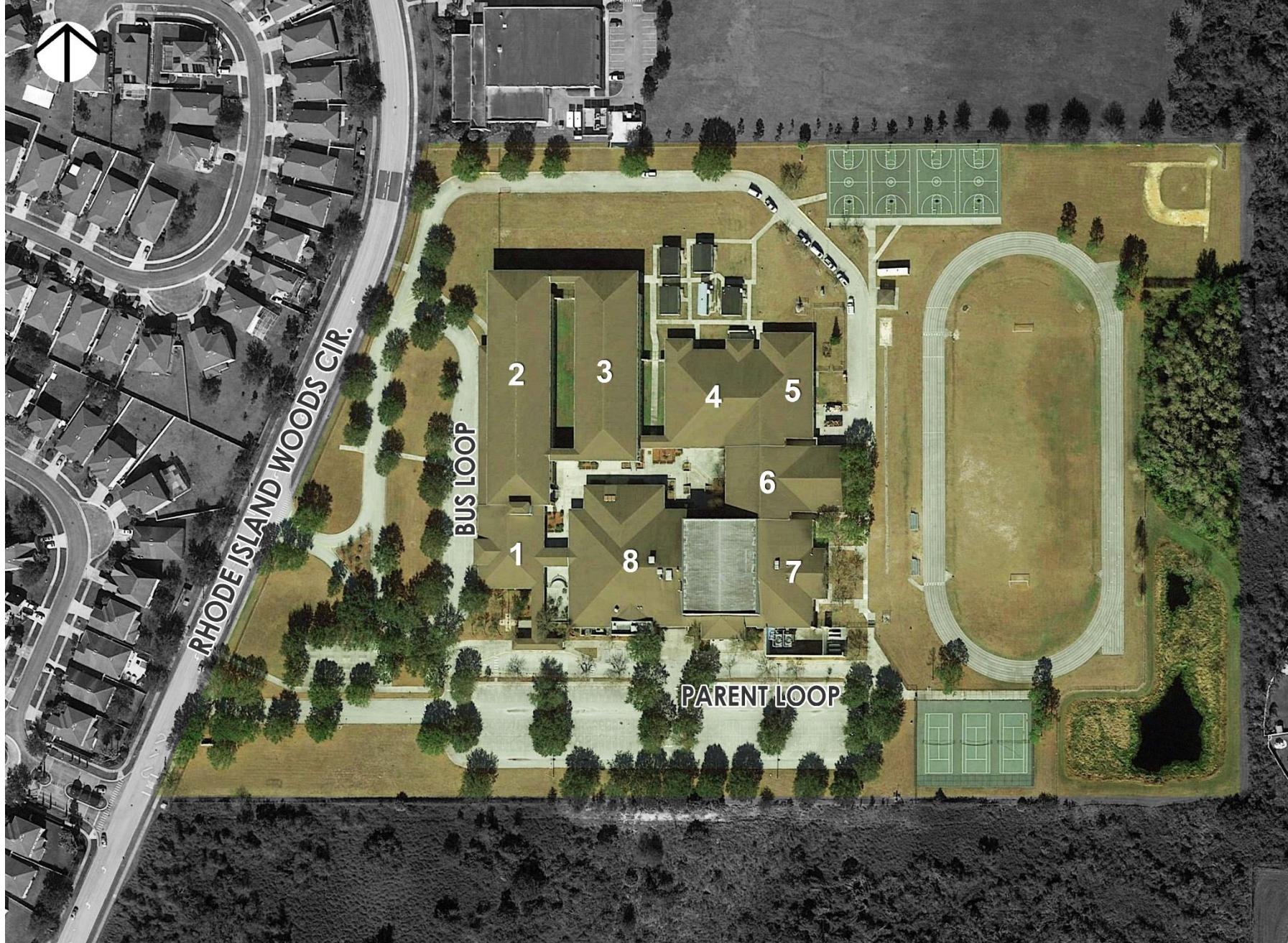


WHAT TO EXPECT

1. **Preliminary Phasing. Core Spaces Summer Breaks:**
 - a. Summer 2020: Bldgs 1,8,7 (Admin, Café., Gym)
 - b. Fall 2020: Bldg 2 (Classroom)
 - c. Spring 2021: Bldg 3 (Classroom)
 - d. Summer 2021: Bldgs 4,5,6 & Sitework (Media, Vocational, Music)

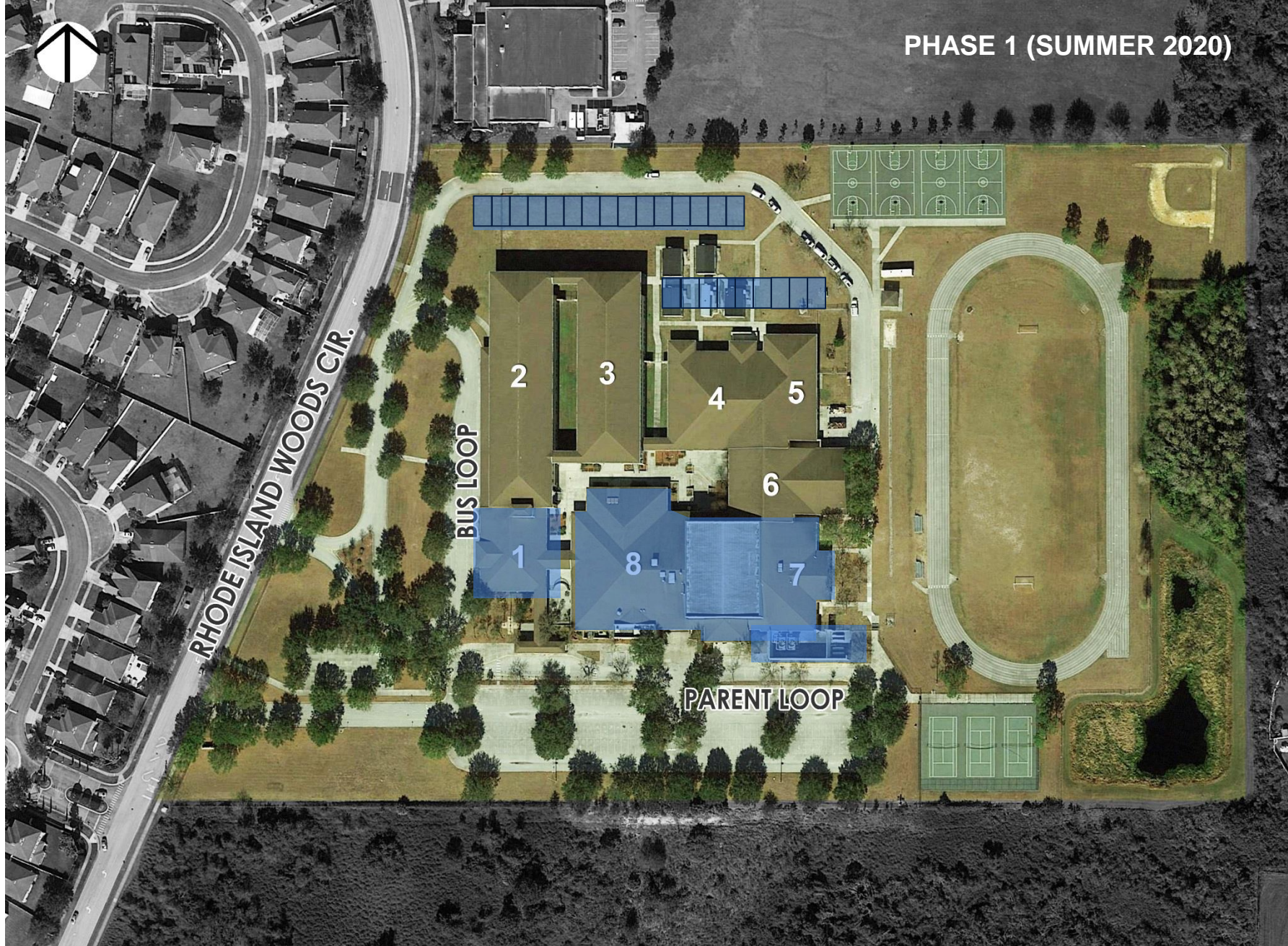
2. **Safety:**
 - a. All workers will be JLA Badged
 - b. Construction Fencing/ Gates
 - c. Coordinated Deliveries

3. **What to Expect:**
 - a. Communicate with Admin
 - b. Busy Summers
 - c. Limited Construction Traffic
 - d. After Hours Work



CONSTRUCTION PHASING

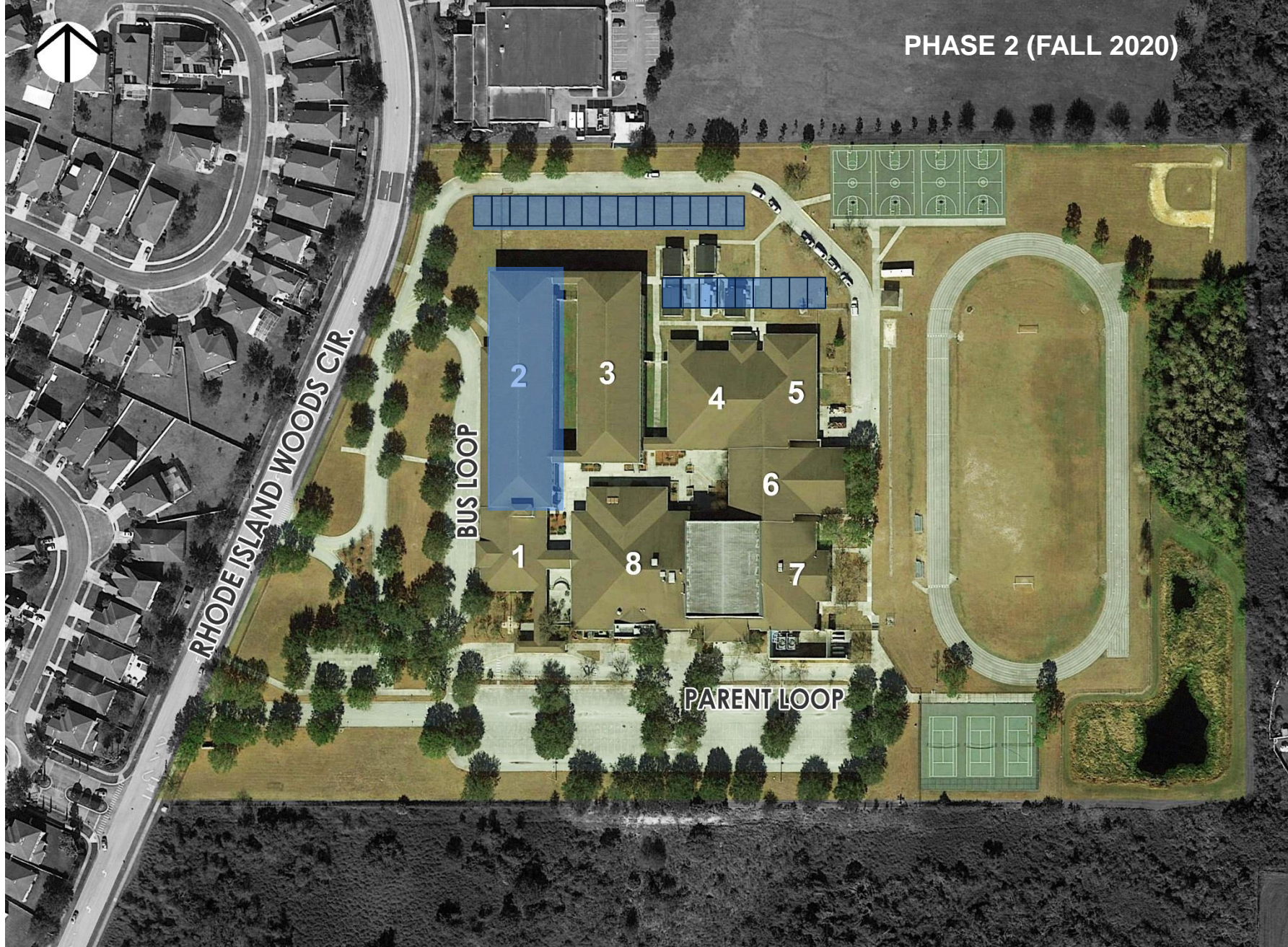
1. **Preliminary Phasing. Core Spaces Summer Breaks:**
 - a. Summer 2020: Bldgs 1,8,7 (Admin, Café., Gym)
 - b. Fall 2020: Bldg 2 (Classroom)
 - c. Spring 2021: Bldg 3 (Classroom)
 - d. Summer 2021: Bldgs 4,5,6 & Sitework (Media, Vocational, Music)



PHASE 1 (SUMMER 2020)

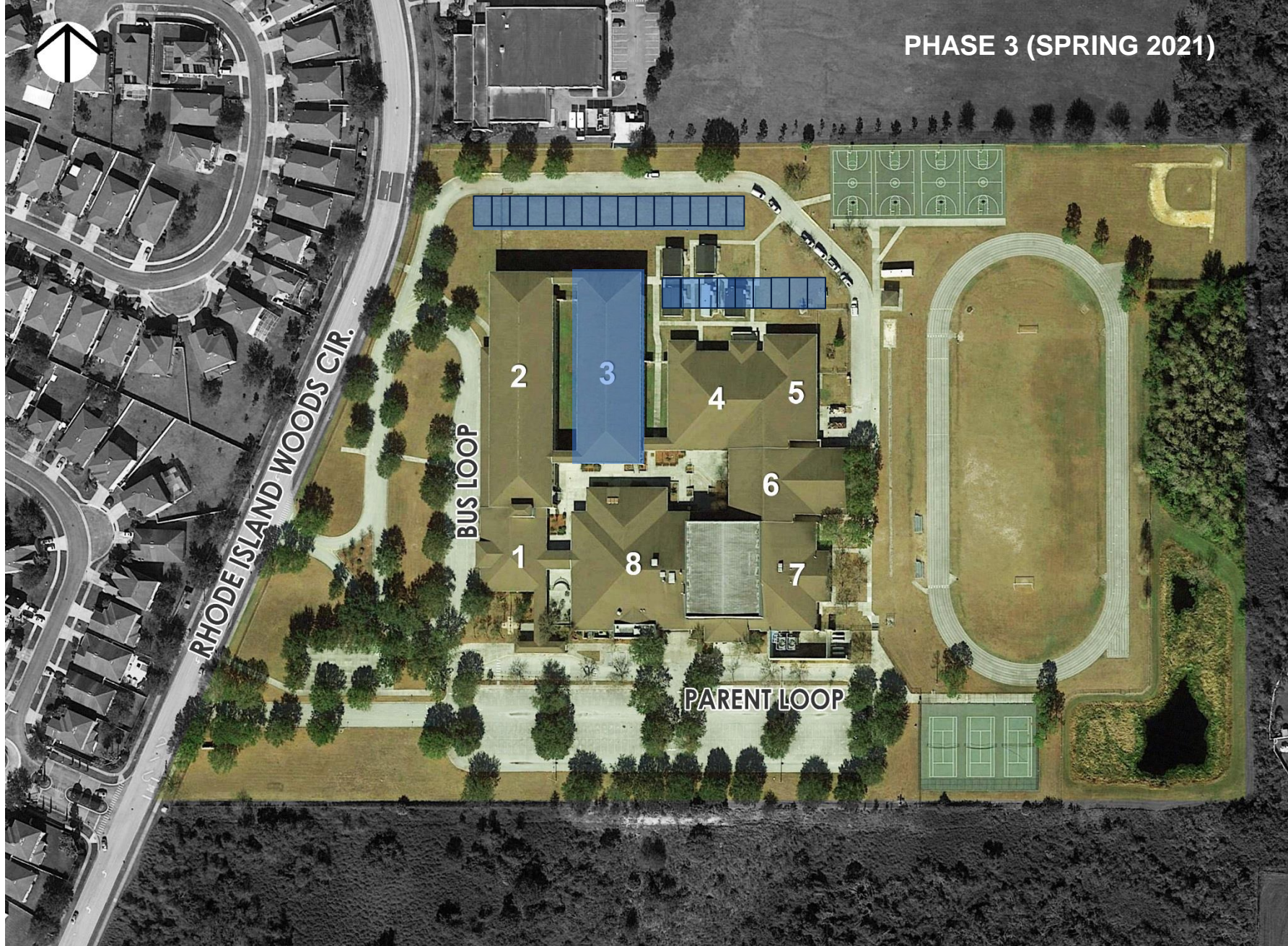
CONSTRUCTION PHASING

1. **Preliminary Phasing. Core Spaces Summer Breaks:**
 - a. Summer 2020: Bldgs 1,8,7 (Admin, Café., Gym)
 - b. Fall 2020: Bldg 2 (Classroom)
 - c. Spring 2021: Bldg 3 (Classroom)
 - d. Summer 2021: Bldgs 4,5,6 & Sitework (Media, Vocational, Music)



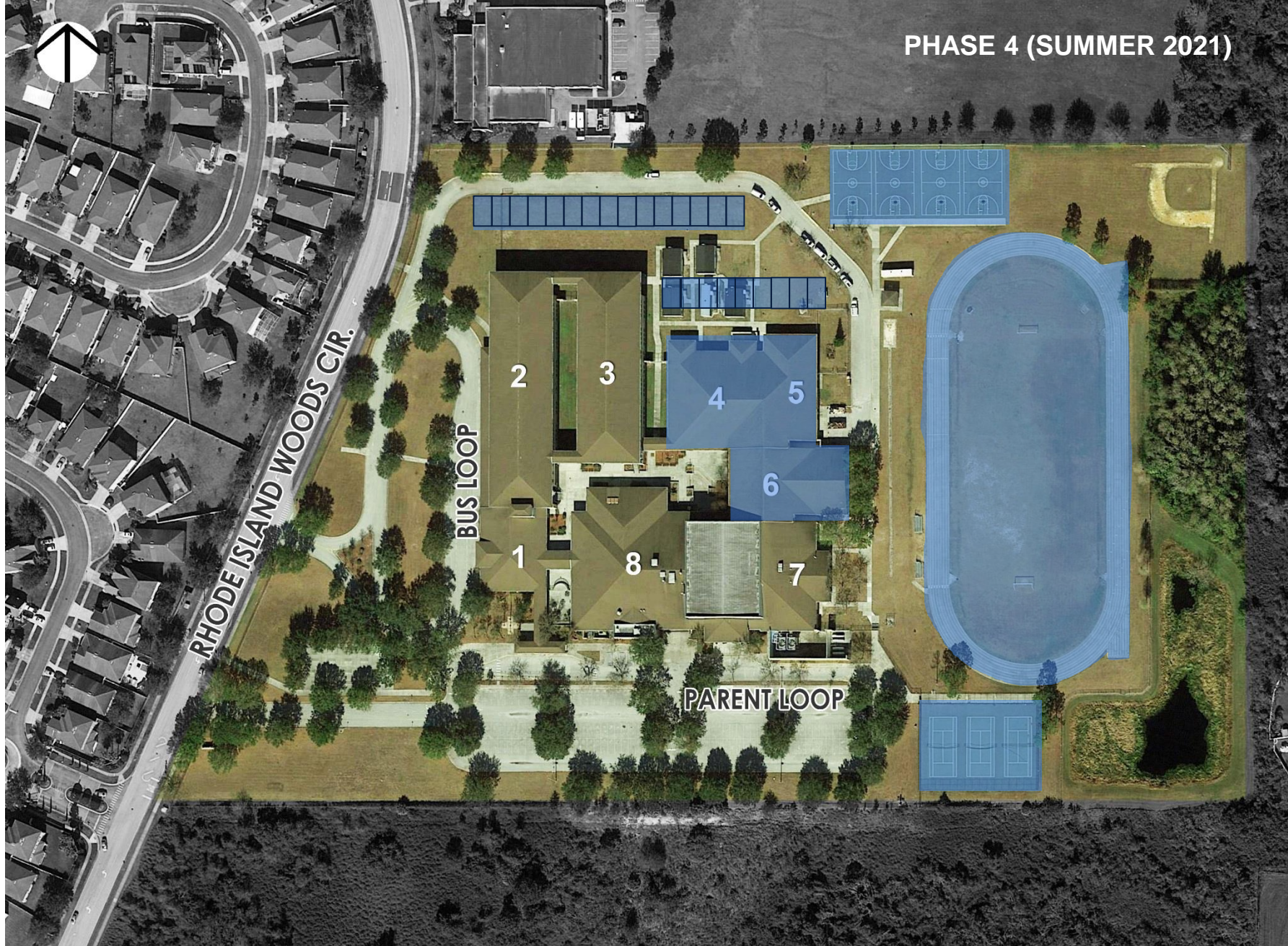
CONSTRUCTION PHASING

1. **Preliminary Phasing. Core Spaces Summer Breaks:**
 - a. Summer 2020: Bldgs 1,8,7 (Admin, Café., Gym)
 - b. Fall 2020: Bldg 2 (Classroom)
 - c. Spring 2021: Bldg 3 (Classroom)
 - d. Summer 2021: Bldgs 4,5,6 & Sitework (Media, Vocational, Music)



CONSTRUCTION PHASING

1. **Preliminary Phasing. Core Spaces Summer Breaks:**
 - a. Summer 2020: Bldgs 1,8,7 (Admin, Café., Gym)
 - b. Fall 2020: Bldg 2 (Classroom)
 - c. Spring 2021: Bldg 3 (Classroom)
 - d. Summer 2021: Bldgs 4,5,6 & Sitework (Media, Vocational, Music)





**Thank you to the Orange County taxpayers, who
make our construction program possible.**

Questions?