

February 18, 2021

100% Design Community Meeting

Orange Technical College – Orlando Campus



**Orange County
Public Schools**

Orange Technical College - Orlando

100% Design Meeting Agenda

February 18, 2021

- Welcome – Vicki-Elaine Felder, School Board Member, District 5
- Introductions – Lauren Roth, Senior Manager, Facilities Communications
- Vision 2024 Overview – Melanie Stefanowicz, Associate Superintendent
- Project Update – Architect – Harvard Jolly Architecture
Construction Manager – Gilbane Building Company
- Questions & Answers
- Adjournment

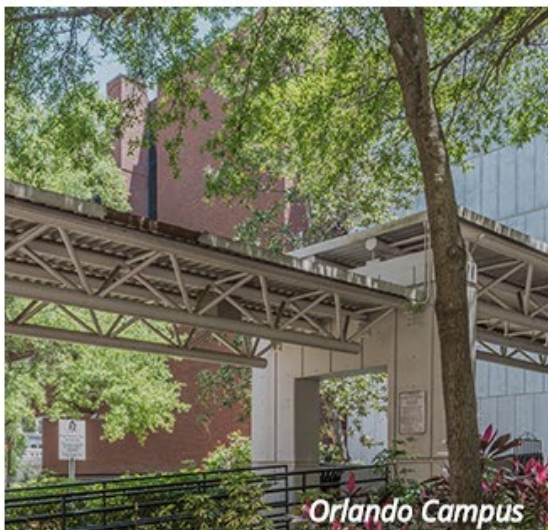
***Welcome Message from
District 5 Board Member
Vicki-Elaine Felder***



***Introduction by Senior Manager,
Facilities Communication***
Lauren Roth



Orange Technical College Vision



Orange Technical College Programs

Westside Campus:

- Construction Trades
- Welding Technology
- Apprenticeship
- Human Services

Orlando Campus:

- Health Science Focus

Mid-Florida Campus:

- Industrial
- Transportation
- Manufacturing
- Culinary
- Hospitality
- Adult Education

Winter Park Campus:

- Information & Digital Technology

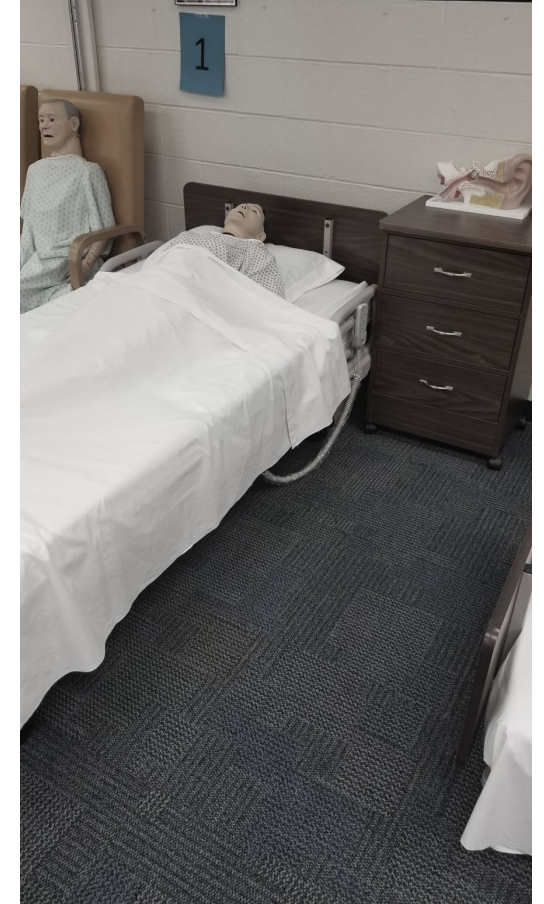
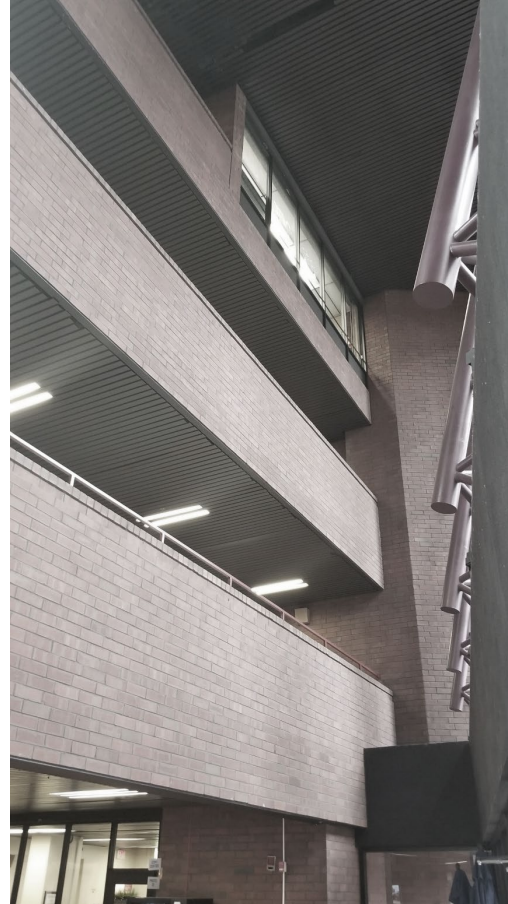
Downtown Orlando





List of Project Scope

- Consolidation of OTC medical programs
- Phased & occupied construction
- Transformation of building interior
- Upgrade of mechanical, electrical, and plumbing systems
- Correction of code and ADA non-compliance
- Roof replacement
- Exterior envelope remediation
- Campus branding

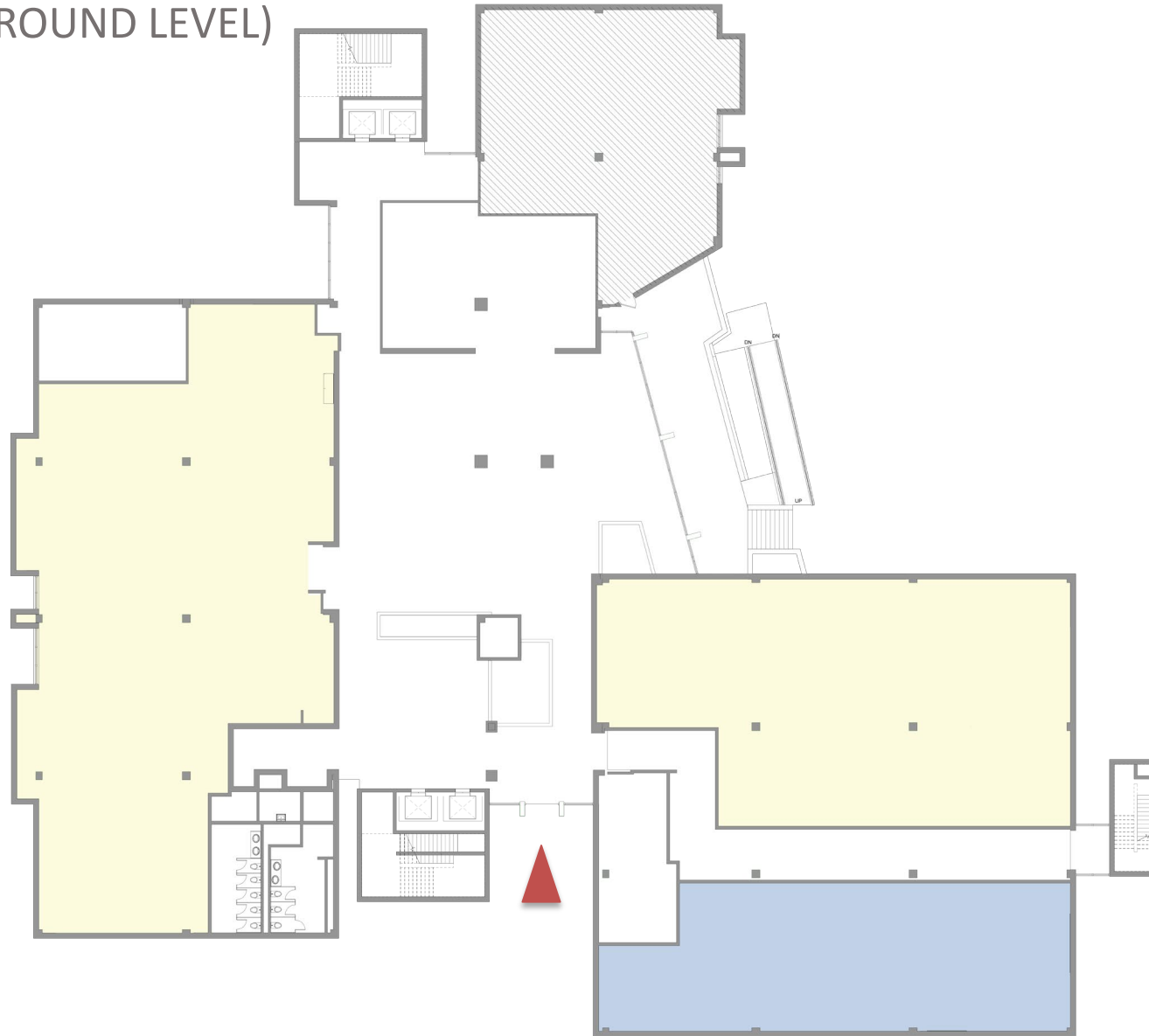


Campus Programs - Prospective

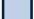
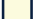

Dental Assisting
Health Unit Coordinator
Hemodialysis Technician
Medical Administrative Specialist
Medical Assistant
Medical Coder / Biller
Patient Care Assistant
Pharmacy Technician
Practical Nursing
Surgical Technology



SECOND FLOOR PLAN (GROUND LEVEL) EXISTING



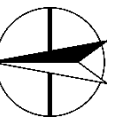
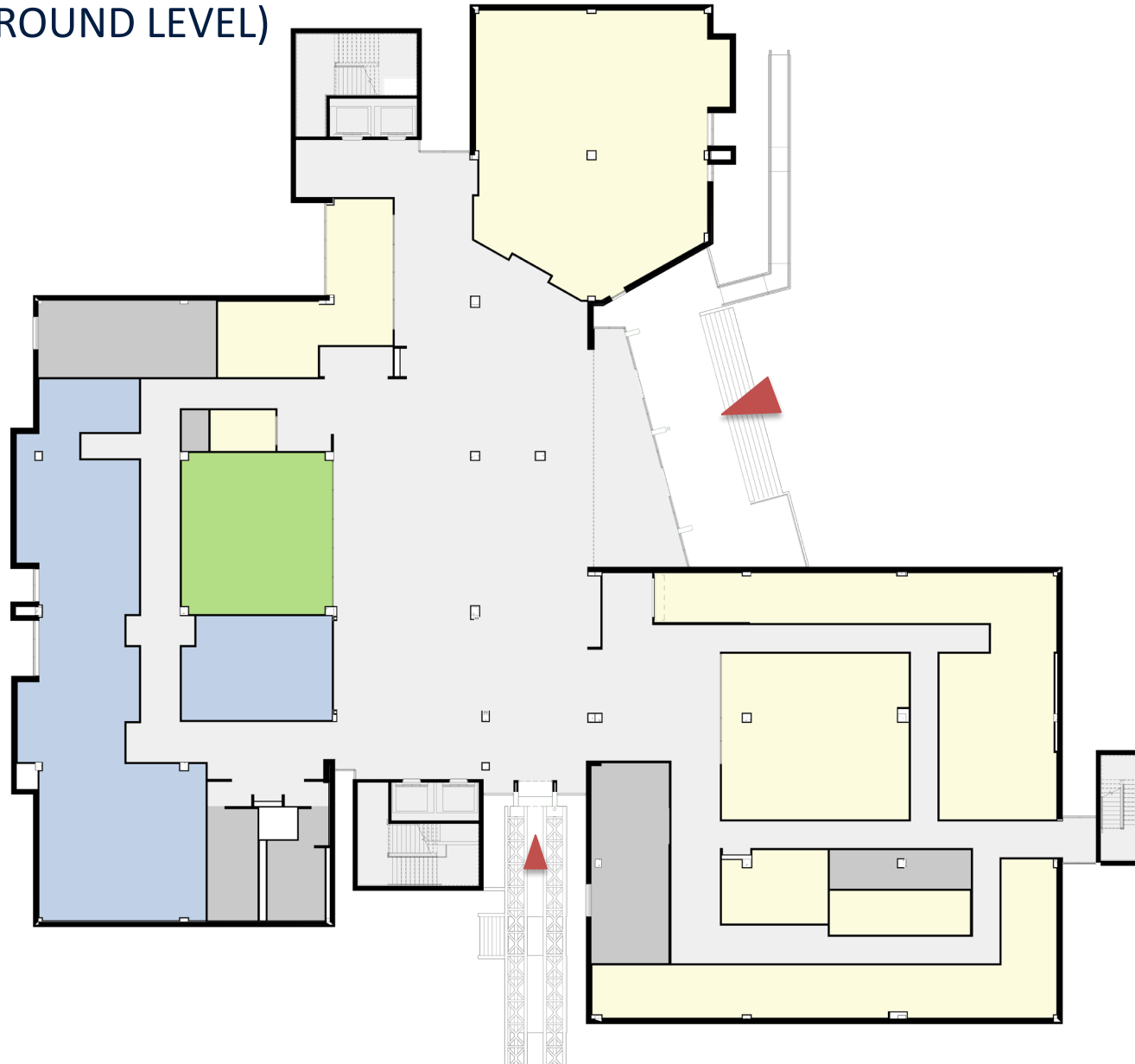
LEGEND

-  DENTAL ASSISTING
-  ADMIN. SUPPORT SERVICES
-  PROGRAMS MOVING OFFSITE

SECOND FLOOR PLAN (GROUND LEVEL) PROPOSED

LEGEND

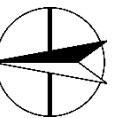
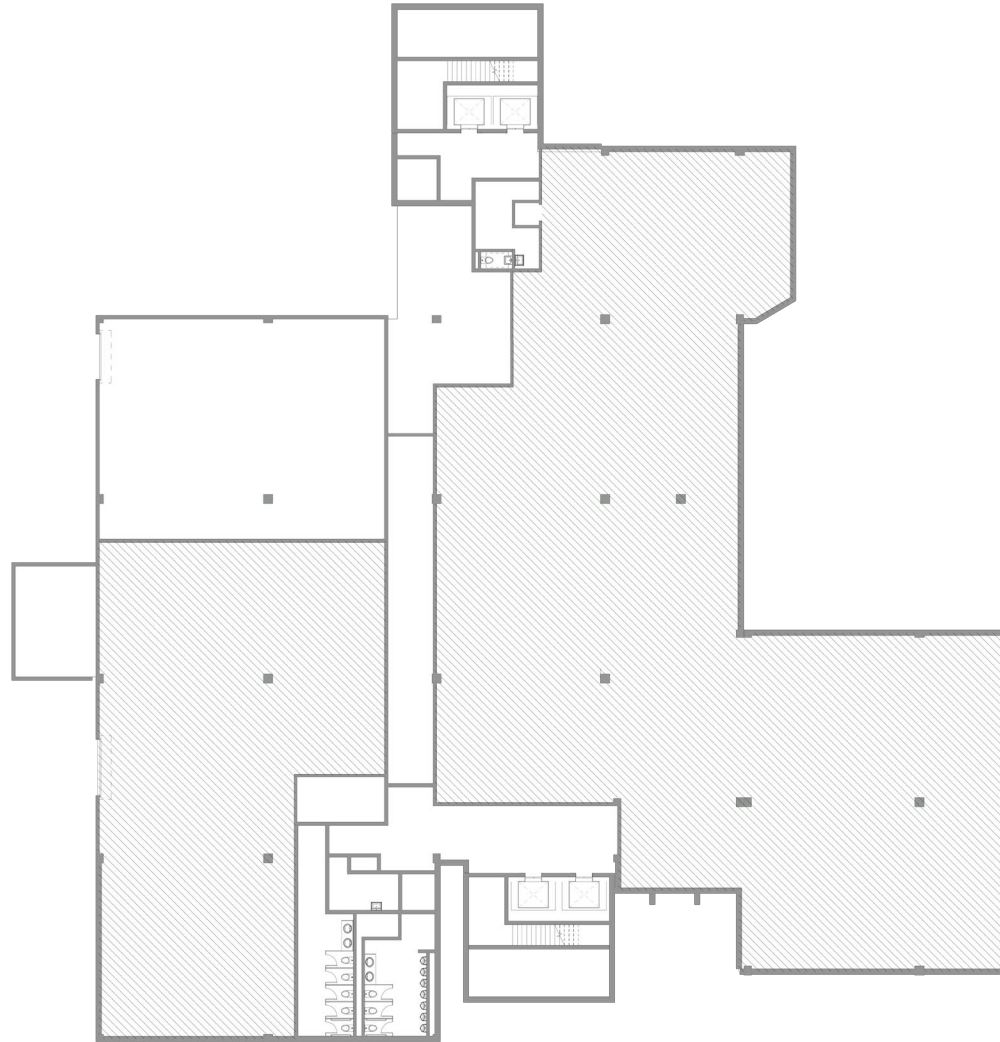
- DENTAL ASSISTING
- SIM. / LEARNING ENVIRONMENTS
- ADMIN. SUPPORT SERVICES



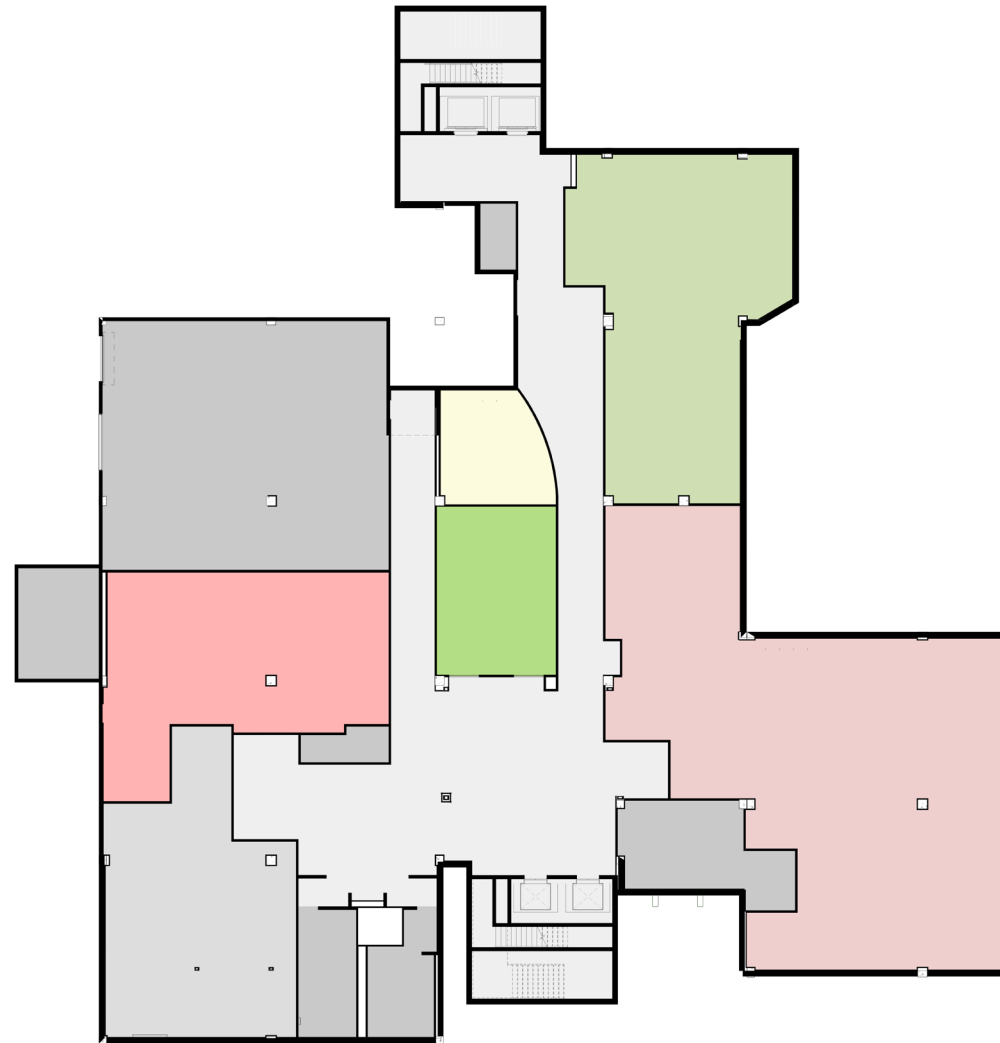
FIRST FLOOR PLAN EXISTING

LEGEND

 PROGRAMS MOVING OFFSITE

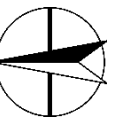


FIRST FLOOR PLAN PROPOSED

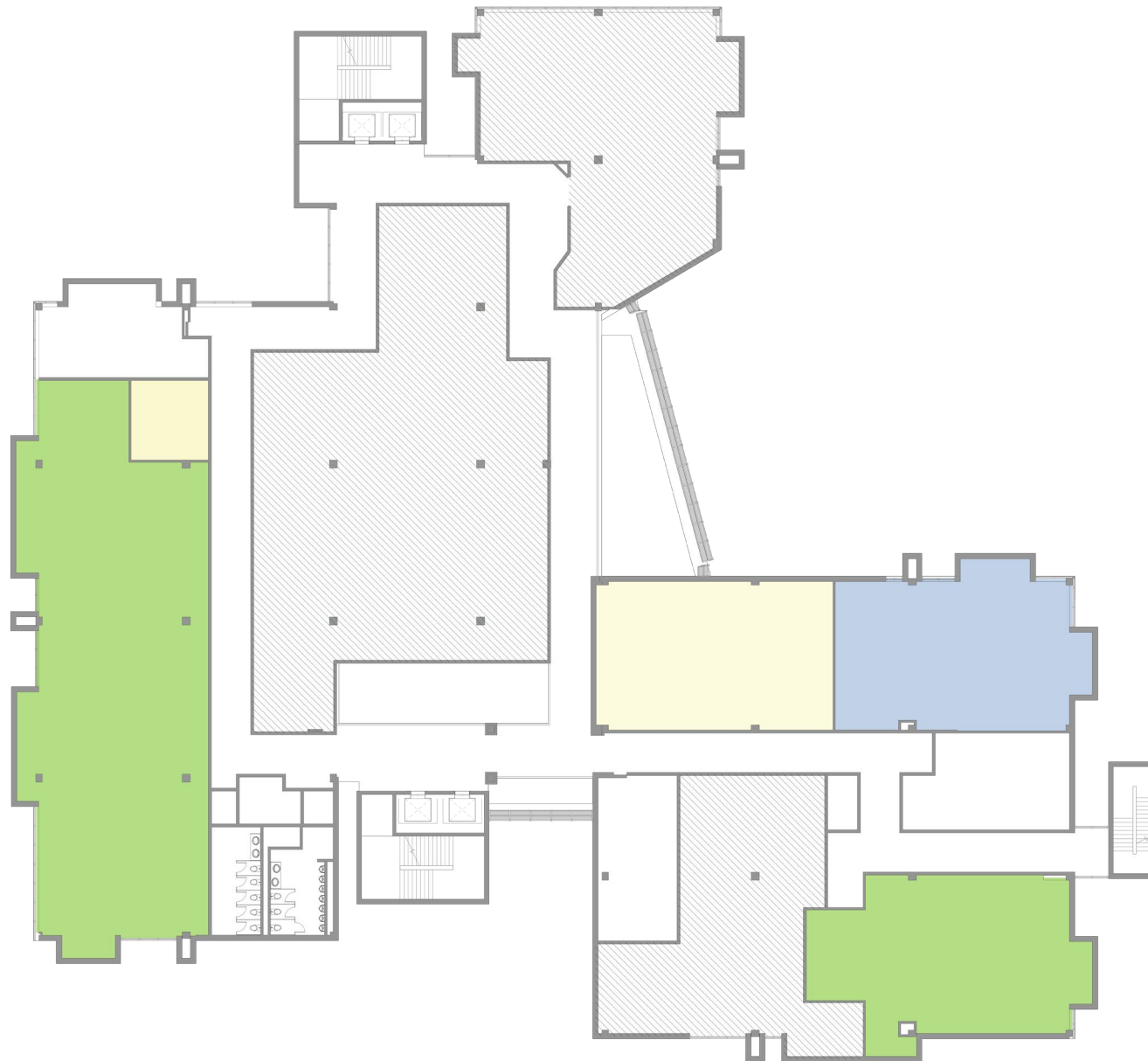


LEGEND

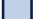

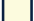

- HUC / MONITOR TECHNICIAN
- HEMODIALYSIS TECHNICIAN
- MEDICAL ADMIN. SPECIALIST
- MEDICAL CODER / BILLER
- ADMIN. SUPPORT SERVICES

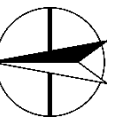


THIRD FLOOR PLAN EXISTING

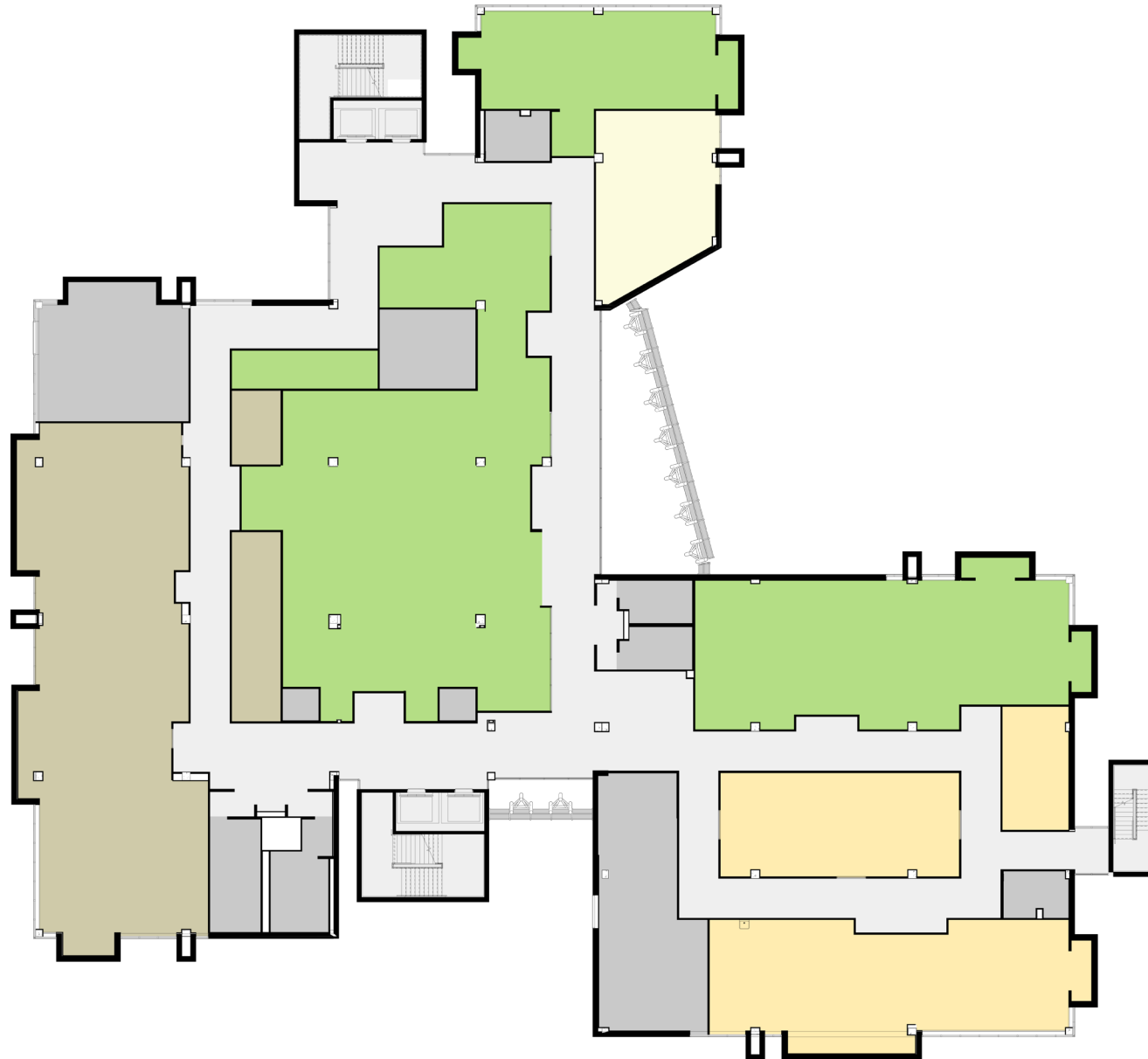


LEGEND

-  DENTAL ASSISTING
-  SIM. / LEARNING ENVIRONMENTS
-  ADMIN. SUPPORT SERVICES
-  PROGRAMS MOVING OFFSITE

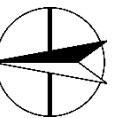


THIRD FLOOR PLAN PROPOSED

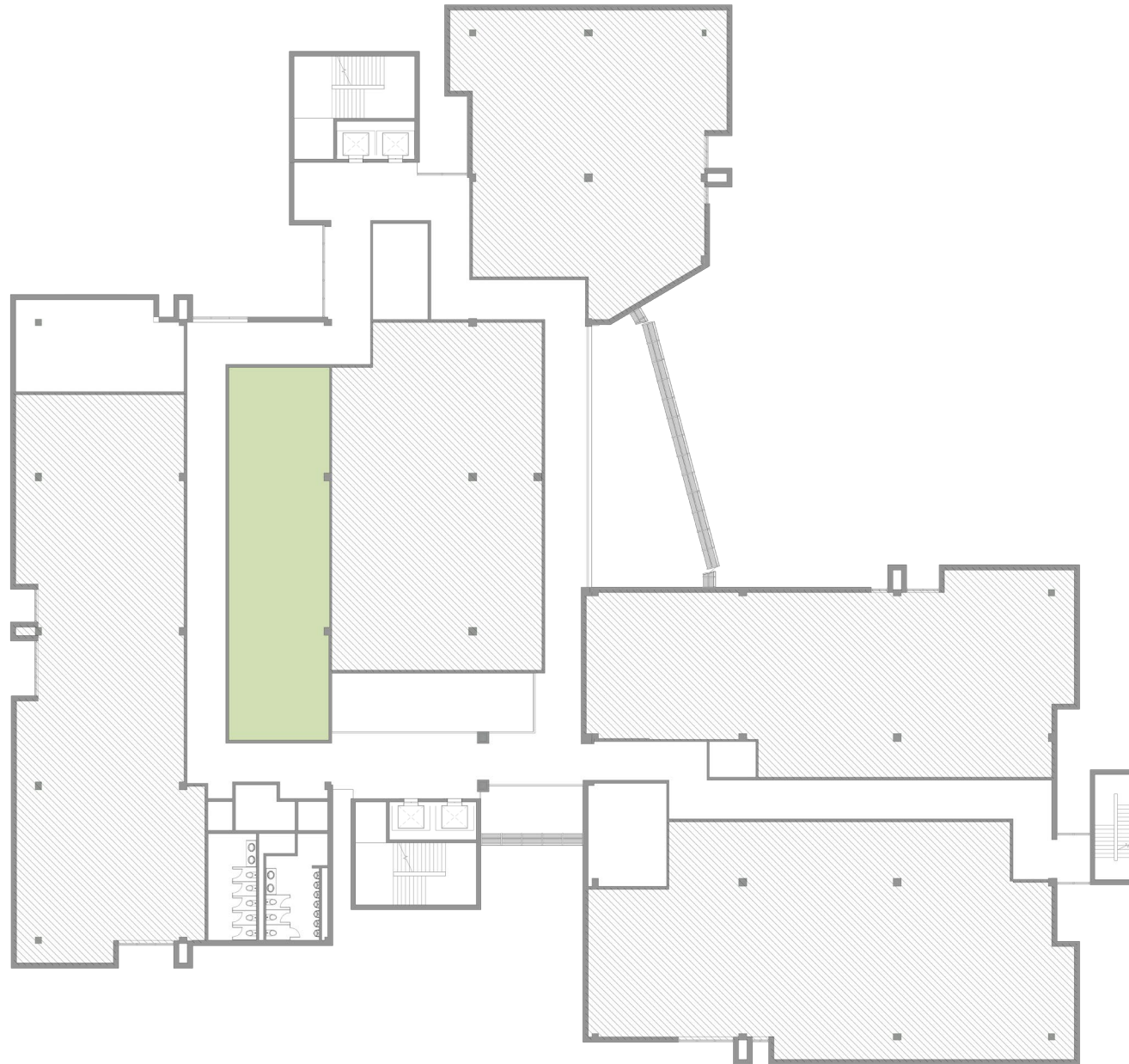


LEGEND

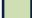

- PHARMACY TECHNICIAN
- SIM. / LEARNING ENVIRONMENTS
- SURGICAL TECHNOLOGY
- ADMIN. SUPPORT SERVICES

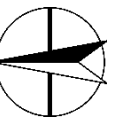


FOURTH FLOOR PLAN EXISTING

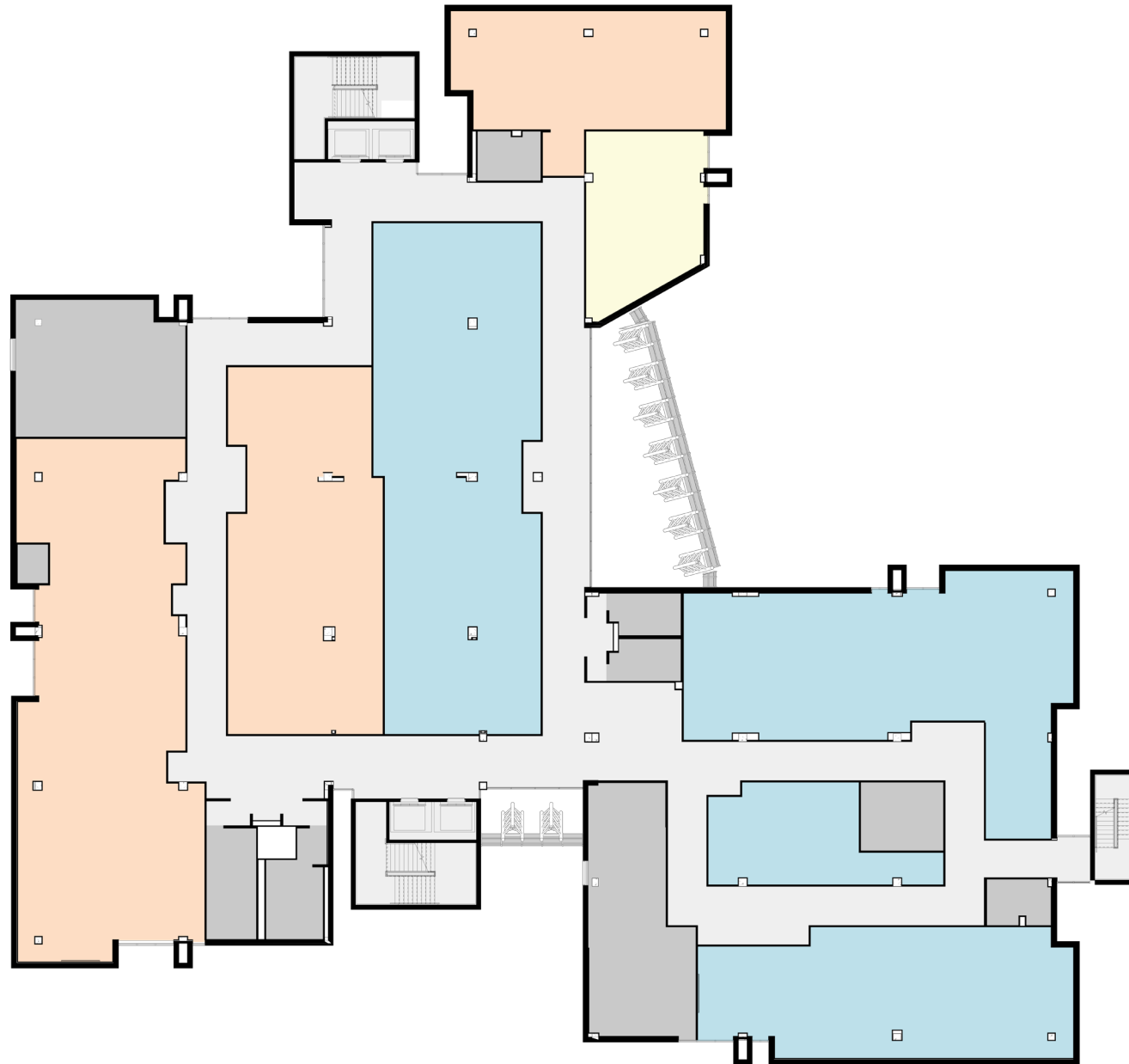


LEGEND

-  MEDICAL ADMIN. SPECIALIST
-  PROGRAMS MOVING OFFSITE



FOURTH FLOOR PLAN PROPOSED



LEGEND

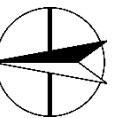
- PATIENT CARE ASSISTING
- PRACTICAL NURSING
- ADMIN. SUPPORT SERVICES

FIFTH FLOOR PLAN EXISTING



LEGEND

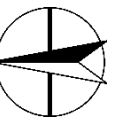
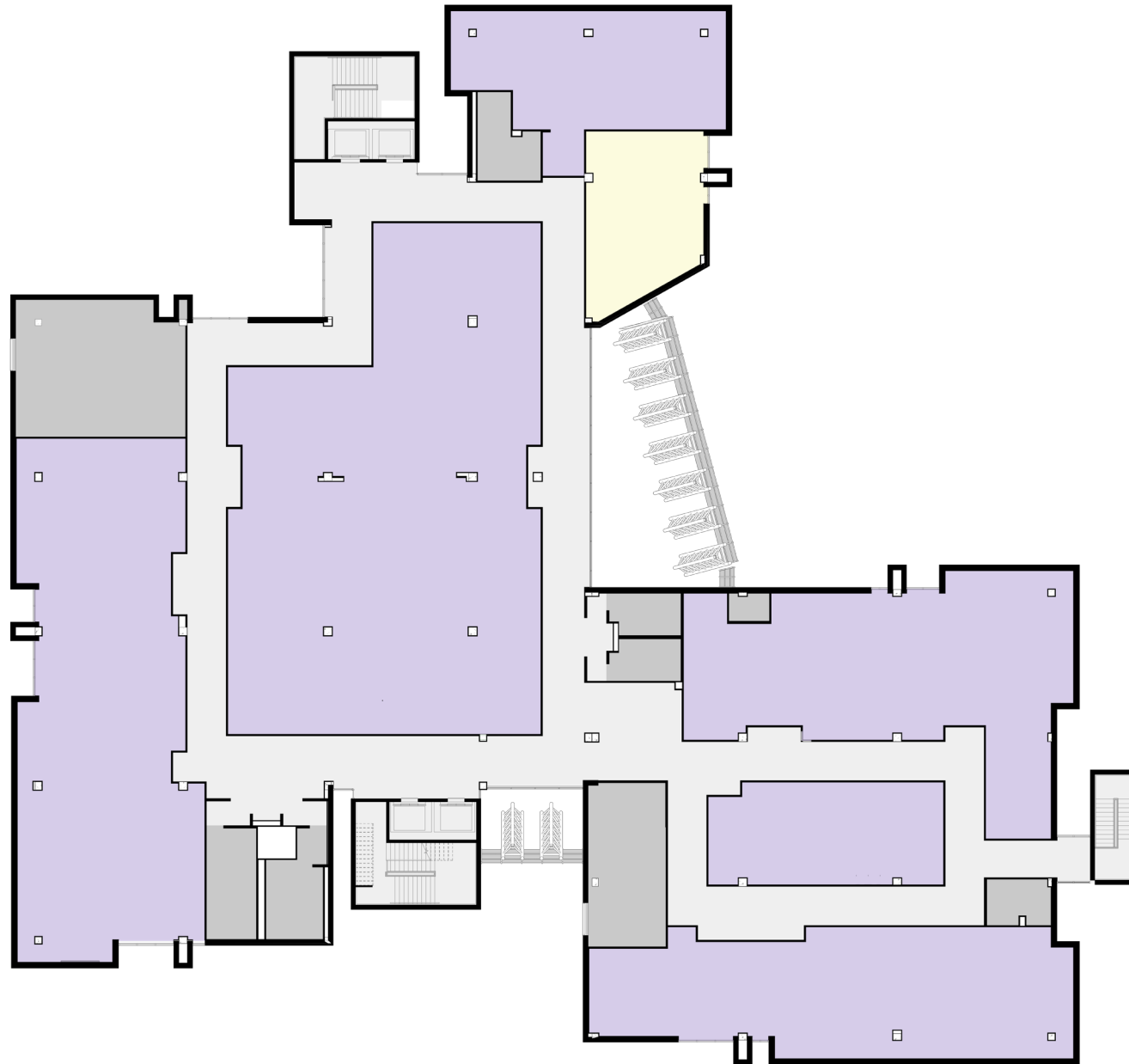
- HUC / MONITOR TECHNICIAN
- PATIENT CARE ASSISTING
- PRACTICAL NURSING
- SIM. / LEARNING ENVIRONMENTS
- SURGICAL TECHNOLOGY
- PROGRAMS MOVING OFFSITE



FIFTH FLOOR PLAN PROPOSED

LEGEND

- MEDICAL ASSISTANT
- ADMIN. SUPPORT SERVICES



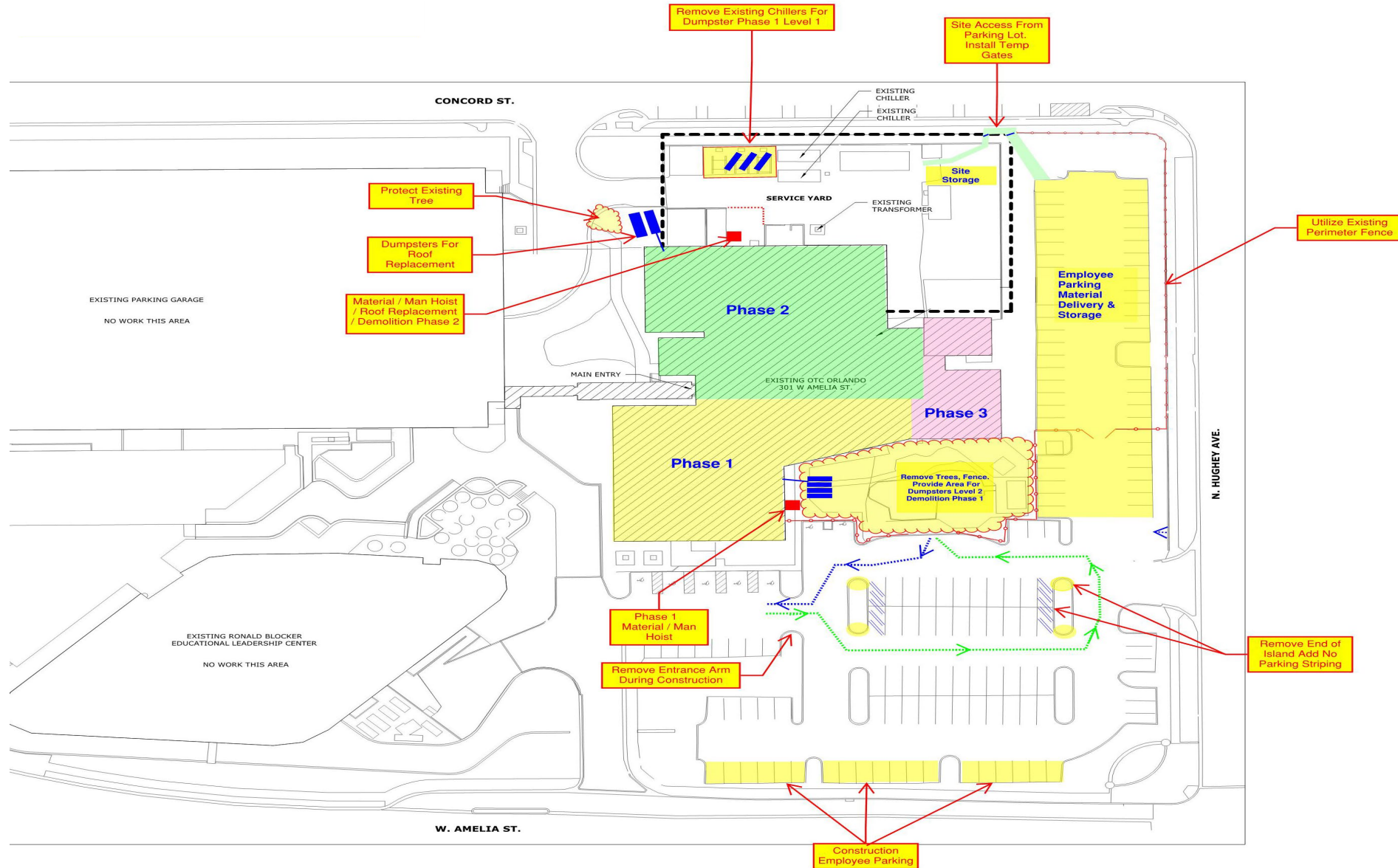
DURING CONSTRUCTION

WHAT TO EXPECT

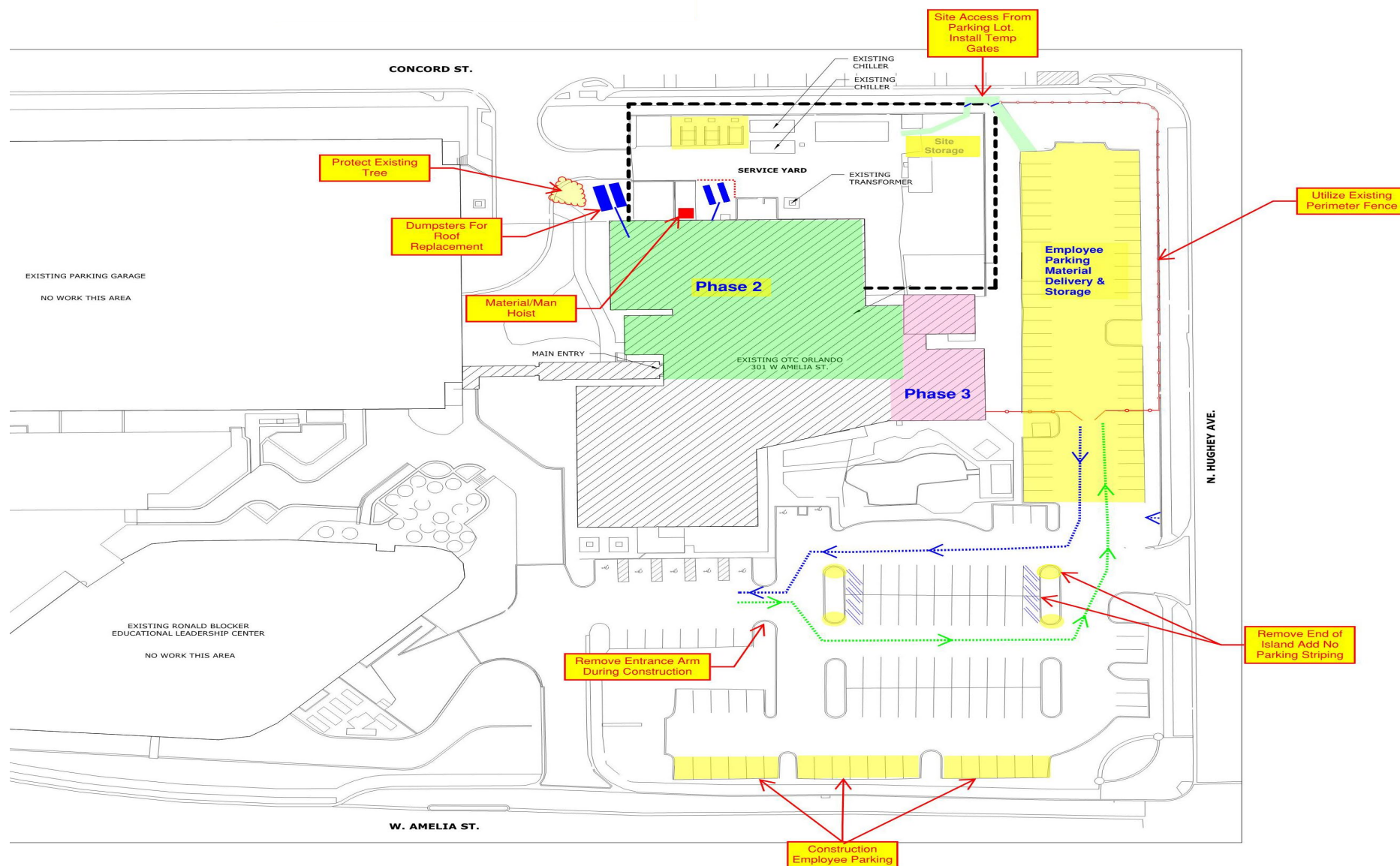
1. Coordinate construction and educational activities while school is in session and during exam periods
2. Minimize noise and dust
3. Secure barriers between construction and active education spaces
4. Substantial construction signage to direct traffic
5. Background checks on construction trade workers
6. Material delivery coordination – avoid deliveries during peak traffic and use alternative routes for deliveries



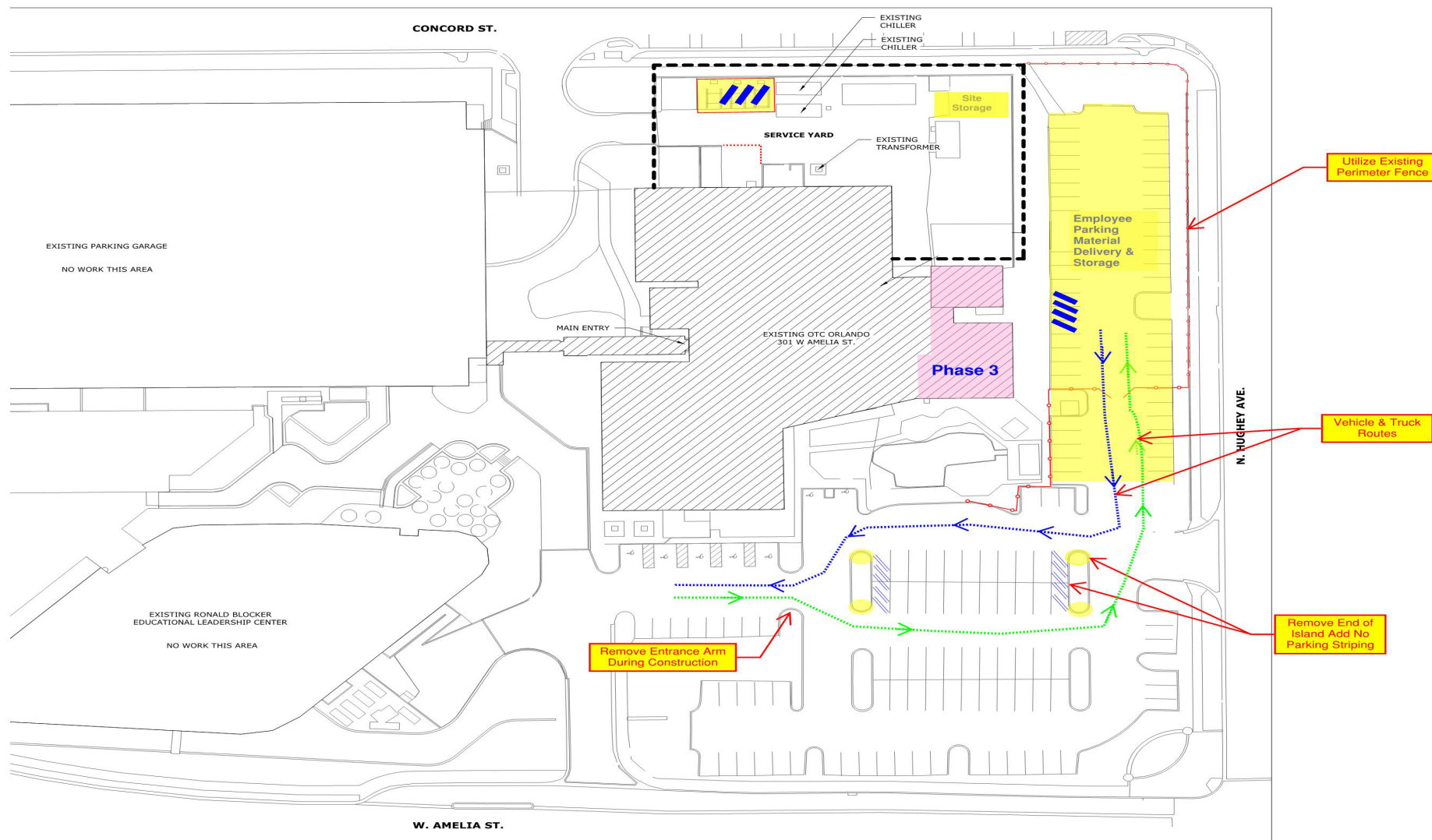
PHASE 1 SITE PLAN PROPOSED



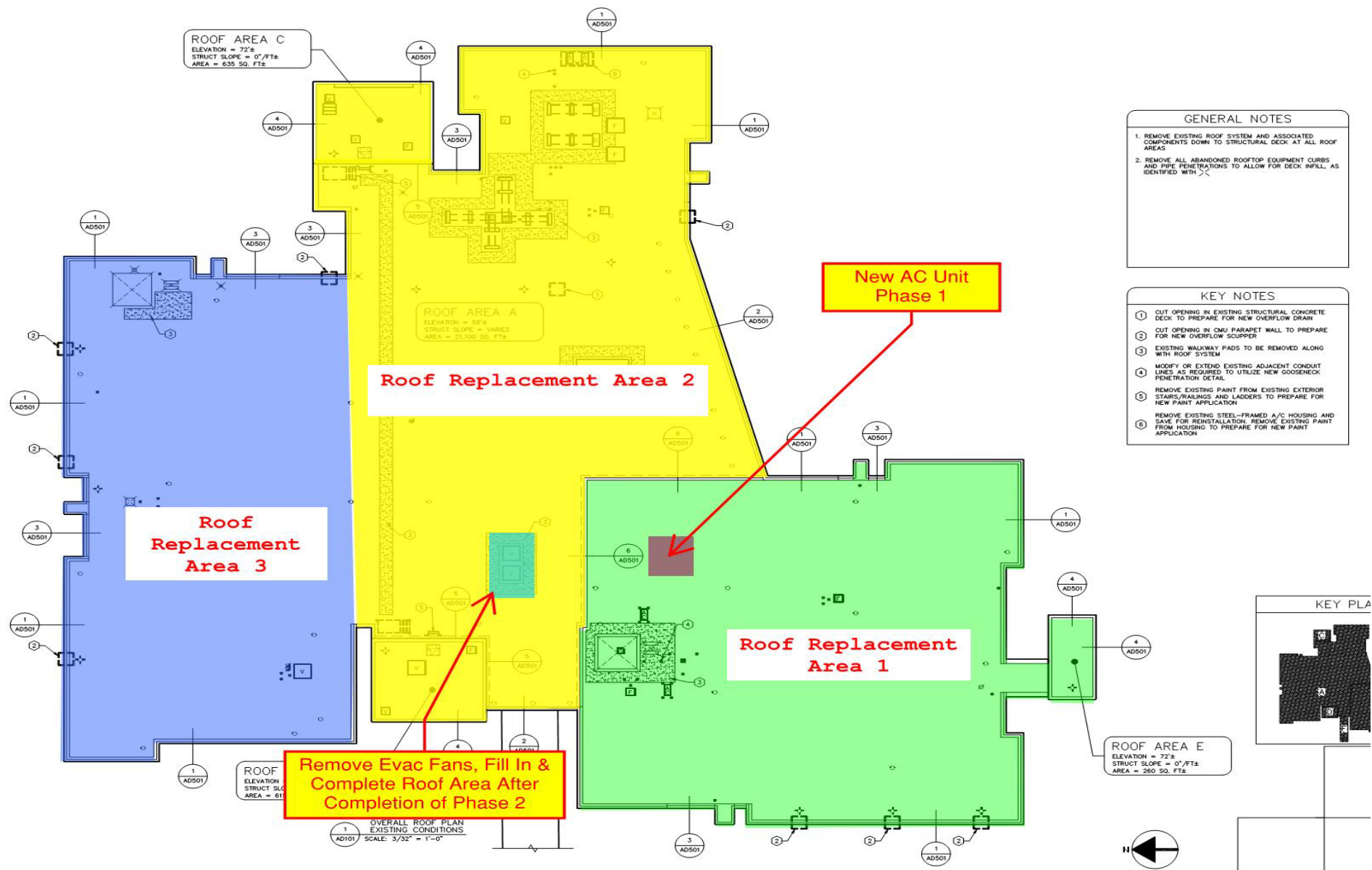
PHASE 2 SITE PLAN PROPOSED



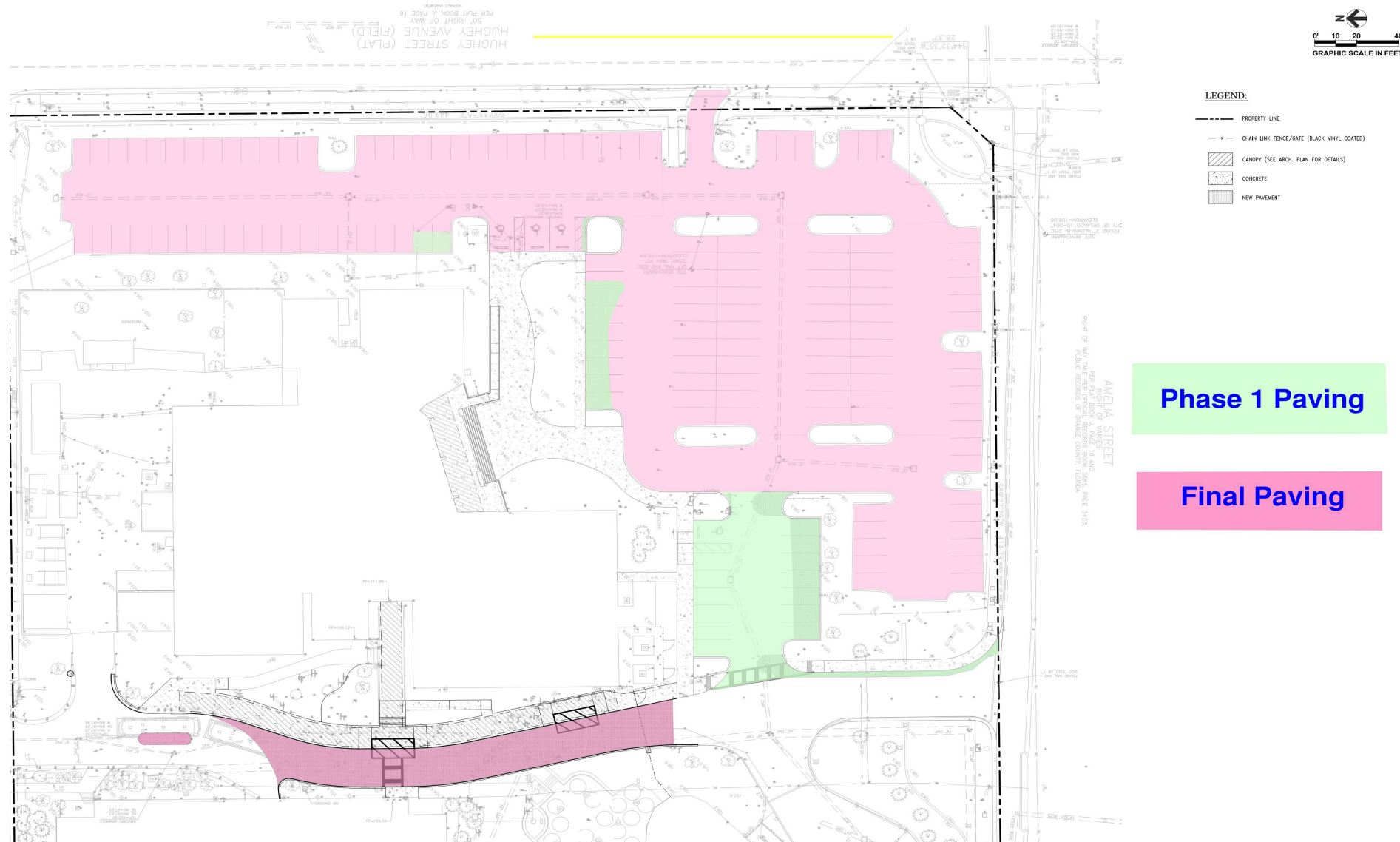
PHASE 3 SITE PLAN PROPOSED



ROOF PLAN PROPOSED



PHASED PAVING PLAN PROPOSED



OTC Orlando – Prospective Example of Health Education Spaces



CPR Simulation Classroom



Simulation Control Room

OTC Orlando – Prospective Example of Health Education Spaces



Simulation Control & Observation Room



Hospital Simulation Environment

OTC Orlando – Prospective Example of Health Education Spaces



Simulation Operating Room



Medical Skills Lab Stations

OTC Orlando – Proposed Schedule

Milestones	Dates
Construction NTP	May 3, 2021
Phase I – Substantial Completion	March 22, 2022
Phase II – Substantial Completion	January 6, 2023
Phase III – Substantial Completion	June 1, 2023
New OTC Orlando Completion	June 1, 2023



Questions & Answers