

Orange County Public Schools



**Pershing / Pine Castle K8
100% Design and Land Use update
Community Meeting
August 28, 2017**



Facilities Planning
Orange County Public Schools

Superintendent Dr. Barbara Jenkins

Chief Facilities Officer John Morris

Pershing / Pine Castle K8 100% Design and Land Use Community Meeting Agenda

August 28, 2017, Pine Castle-Pershing Elementary School, 6:00 PM

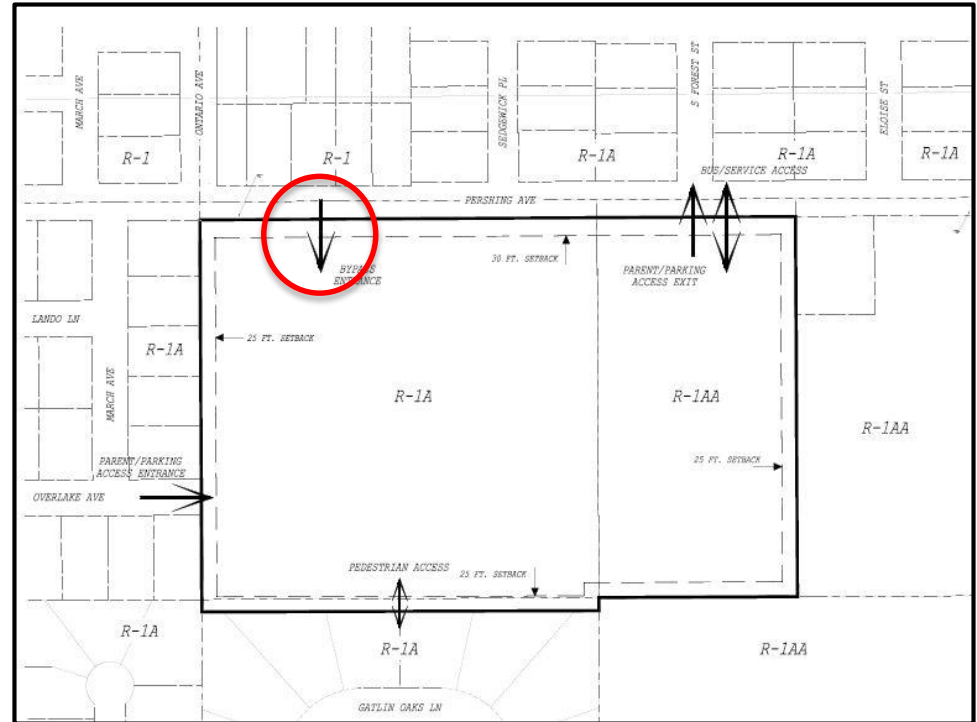
- Welcome – Linda Kobert – School Board Member
- Introductions & Land Use Update – Tyrone Smith
- Project Update –Architect: Zyscovich Architects
 - 208-K8-SE-3 Pershing K8
- Questions and Answers
- Adjournment

Where we are today.....

- ✓ Technical Review Group (TRG) Pre-Application Meeting
- ✓ Application submitted and found sufficient for review
- ✓ Community Meeting (Required per Public School Siting Regulations)
- ✓ Comments on initial submittal due to OCPS
- ✓ TRG meeting
- ☐ Development Review Committee meeting – Sept. 6
- ☐ Planning & Zoning Commission public hearing – Oct. 19
- ☐ Board of County Commissioners public hearing – Nov. 14

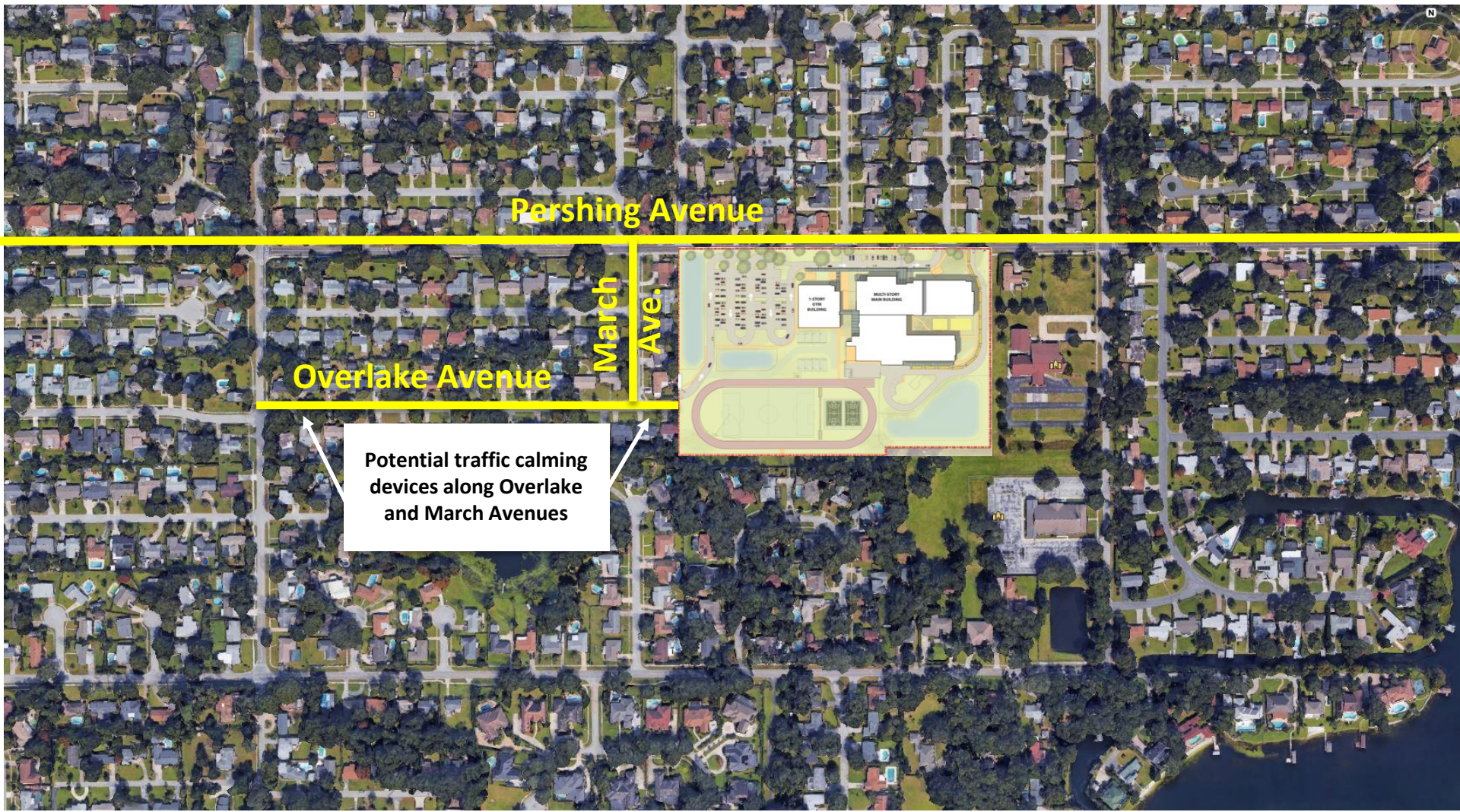
Land Use Plan

- Request to change the use from residential uses to K8 school
- Buffers shall comply with PSSR's
- Setbacks shall comply with Orange County code
- Access to site will be from the existing ingress, with egress on Pershing Avenue
- "Daytime Visitor Access" entrance added on Pershing Avenue

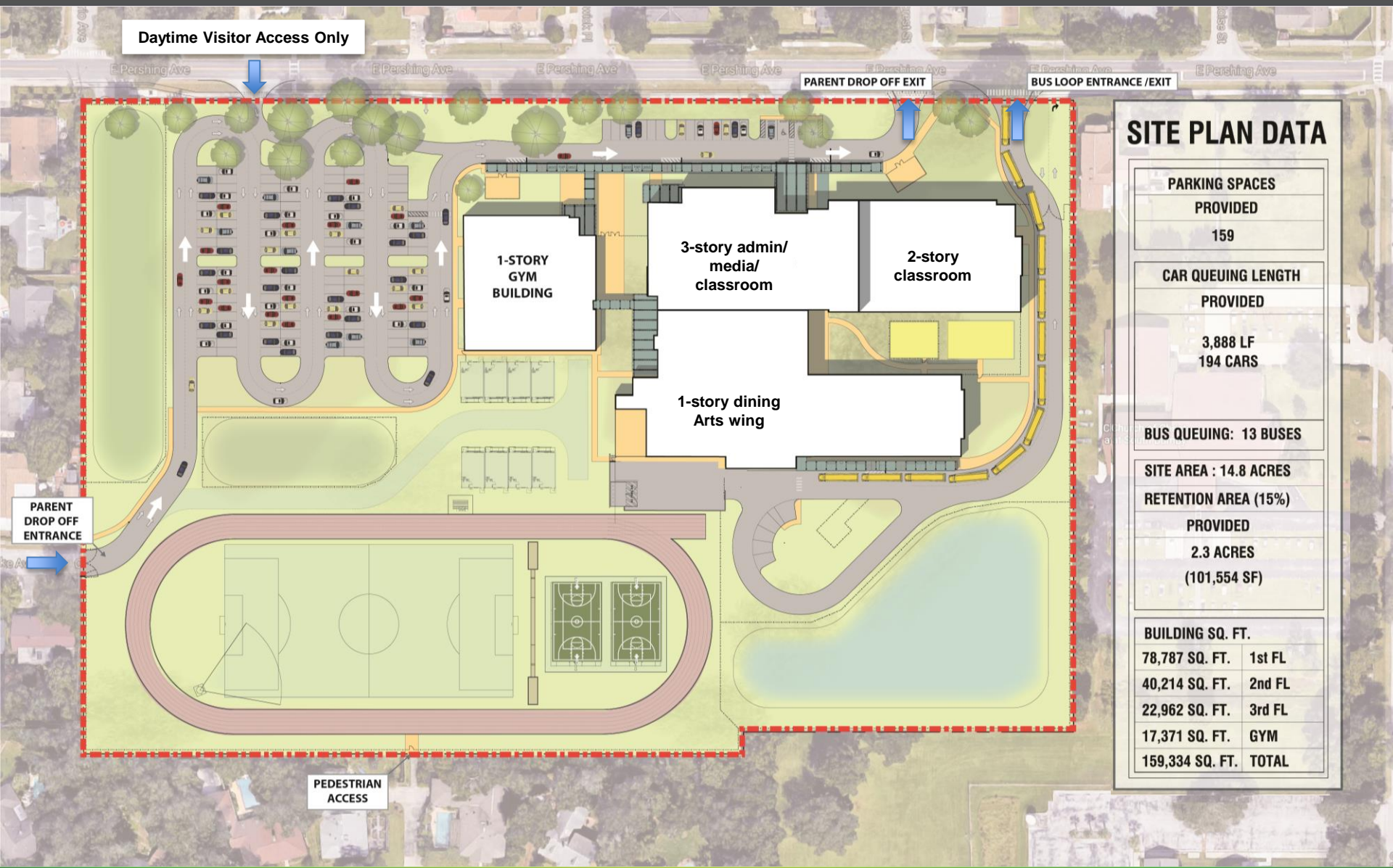


- Bus access will be from Pershing Avenue
- Pedestrian Access from Gatlin Oaks Lane

Orange County Public Schools



Orange County Public Schools



SITE PLAN DATA	
PARKING SPACES PROVIDED	
159	
CAR QUEUING LENGTH PROVIDED	
3,888 LF 194 CARS	
BUS QUEUING: 13 BUSES	
SITE AREA : 14.8 ACRES	
RETENTION AREA (15%) PROVIDED	
2.3 ACRES (101,554 SF)	
BUILDING SQ. FT.	
78,787 SQ. FT.	1st FL
40,214 SQ. FT.	2nd FL
22,962 SQ. FT.	3rd FL
17,371 SQ. FT.	GYM
159,334 SQ. FT.	TOTAL

Conceptual 208-K8-SE-3 Pershing K8 Site

Orange County Public Schools



208-K8-SE-3 Pershing K8

Orange County Public Schools

208-K8-SE-3 Pershing K8 is designed to meet Green Globes sustainable building standards

Sustainable Features Include:

Site

- Native/low water plants – reduce water consumption
- Low Impact Design (LID) stormwater design

Building

- 10% more energy efficient than ASHRAE 90.1 standard
- High Efficiency Chillers (8% energy reduction)
- Light colored roof to reduce heat gain and improves energy performance
- Energy Star rated equipment
- Water saving toilets, faucets, and fixtures
- Most general classrooms have daylighting
- Thermal efficient windows/glazing
- Fully automated building controls system

Orange County Public Schools



Orange County Public Schools



Orange County Public Schools



Perspective (looking southeast on Pershing Ave.)

Orange County Public Schools



Orange County Public Schools



Example – Reception Area

Orange County Public Schools



Example – Media Center

Orange County Public Schools



Example – Collaborative Area

Orange County Public Schools



Example – Multi-Purpose Room

Orange County Public Schools



Example – Gymnasium

Orange County Public Schools



Example— Classrooms

Orange County Public Schools



Example – Music

Orange County Public Schools



Example— Art

Orange County Public Schools



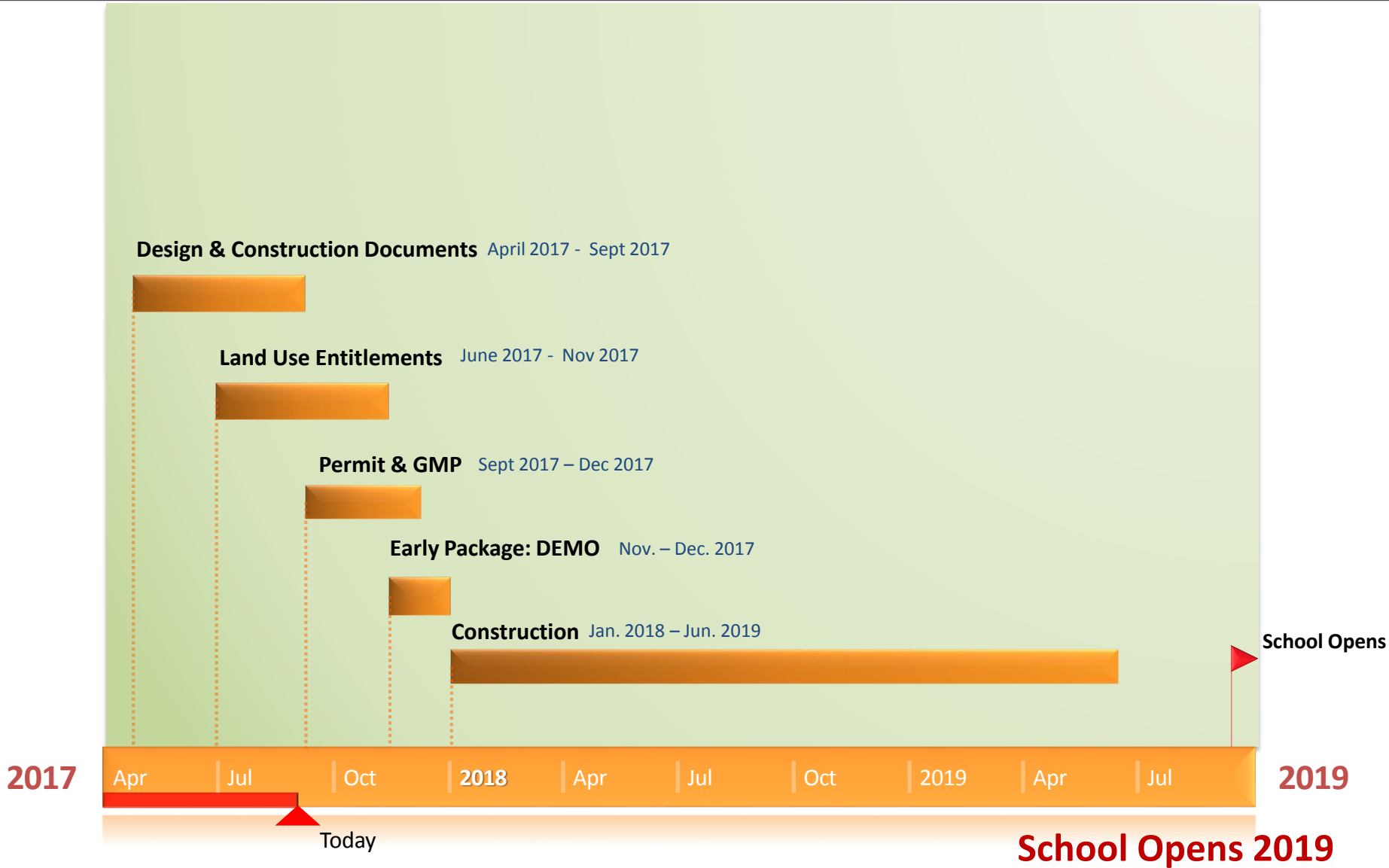
Example – Skills Lab

Orange County Public Schools



Example – Hardcourt

Orange County Public Schools



THANK YOU!

Thank you to Orange County taxpayers for the ½ penny sales tax, which makes this construction possible.

QUESTIONS?