

# Orange County Public Schools



**Pine Castle/Pershing K8  
Land Use Plan & 60% Design  
Community Meeting  
June 21, 2017**



**Facilities Planning**  
**Orange County Public Schools**

Superintendent Dr. Barbara Jenkins

Chief Facilities Officer John Morris

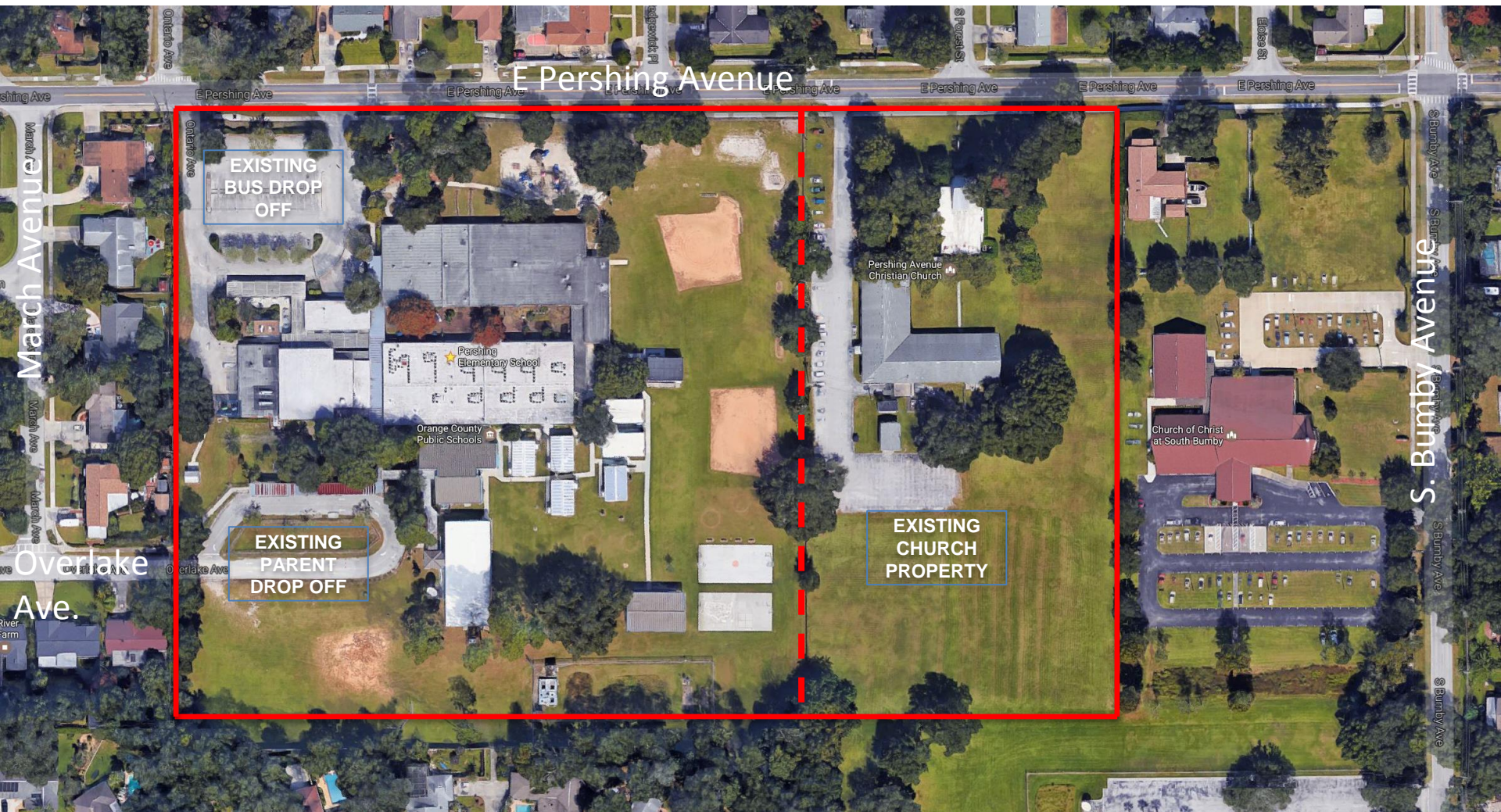
## Pine Castle/Pershing K8 Land Use Plan & 60% Design Community Meeting Agenda

June 21, 2017, Pershing Elementary School, 6:30 PM

- Welcome – Linda Kobert – School Board Member
- Land Use Update – Tyrone Smith
- Project Update –Architect: Zyscovich Architects
  - 208-K8-SE-3 Pershing K8
  - Pershing Pine Castle Elementary School (Swing School)
- Questions and Answers
- Adjournment



# Orange County Public Schools



## Where we are today.....

- ✓ Technical Review Group (TRG) Pre-Application Meeting
- ✓ Application submitted and found sufficient for review
- ✓ Community Meeting
- ✓ Comments on initial submittal due to OCPS (Currently reviewing)
- ☐ TRG meeting
- ☐ Development Review Committee meeting
- ☐ Planning & Zoning Commission public hearing
- ☐ Board of County Commissioners public hearing

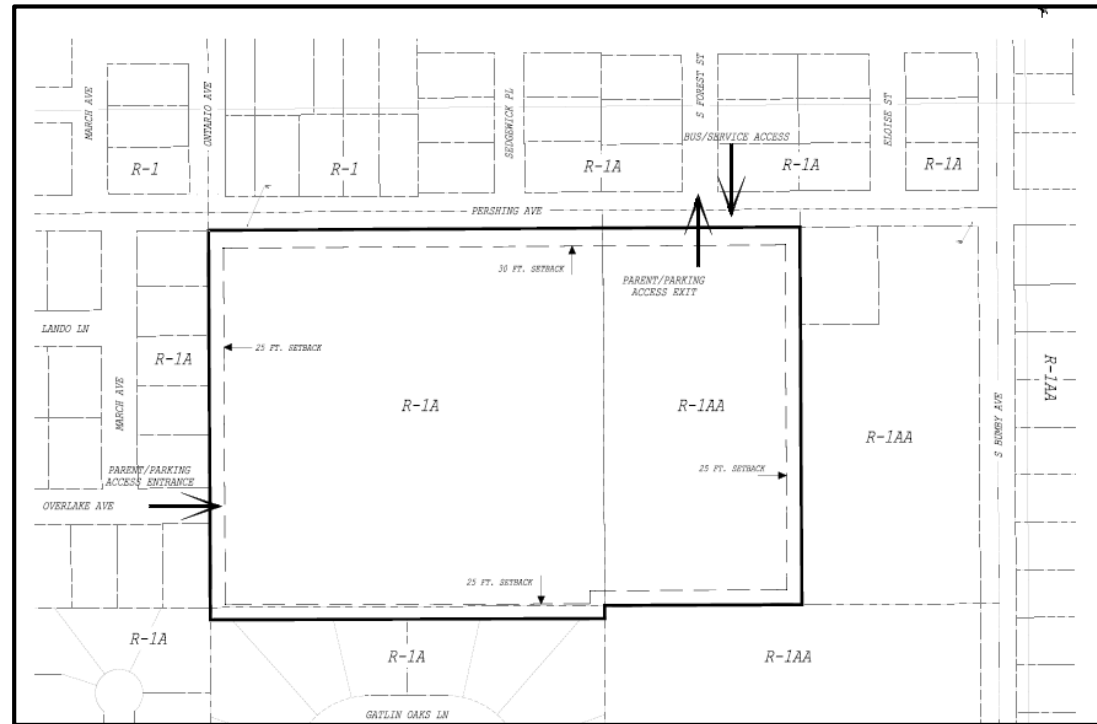
# Development Data

- Total Acres: 14.79 ac
- Proposed Building Square Footage: 200,000 sq.ft
- Parking: 150 spaces / Queuing: 188 cars
- Building Height: 50 ft. Max. (3 stories)
- Project to be built in one (1) phase
- Student Capacity: 1,215 students
- Signage and buffers shall comply with the School Siting Ordinance
- All existing onsite improvements to be demolished
- No waivers requested from the Orange County Code

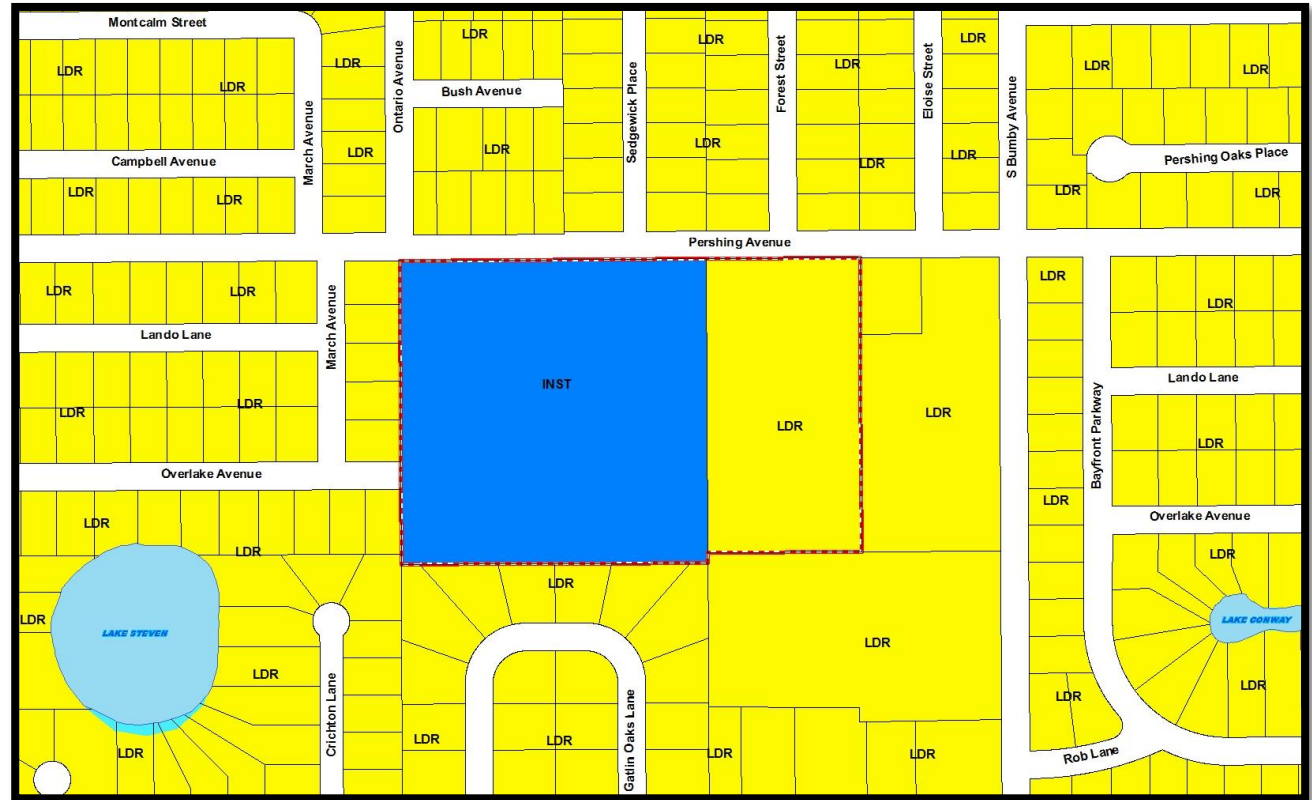


## Land Use Plan

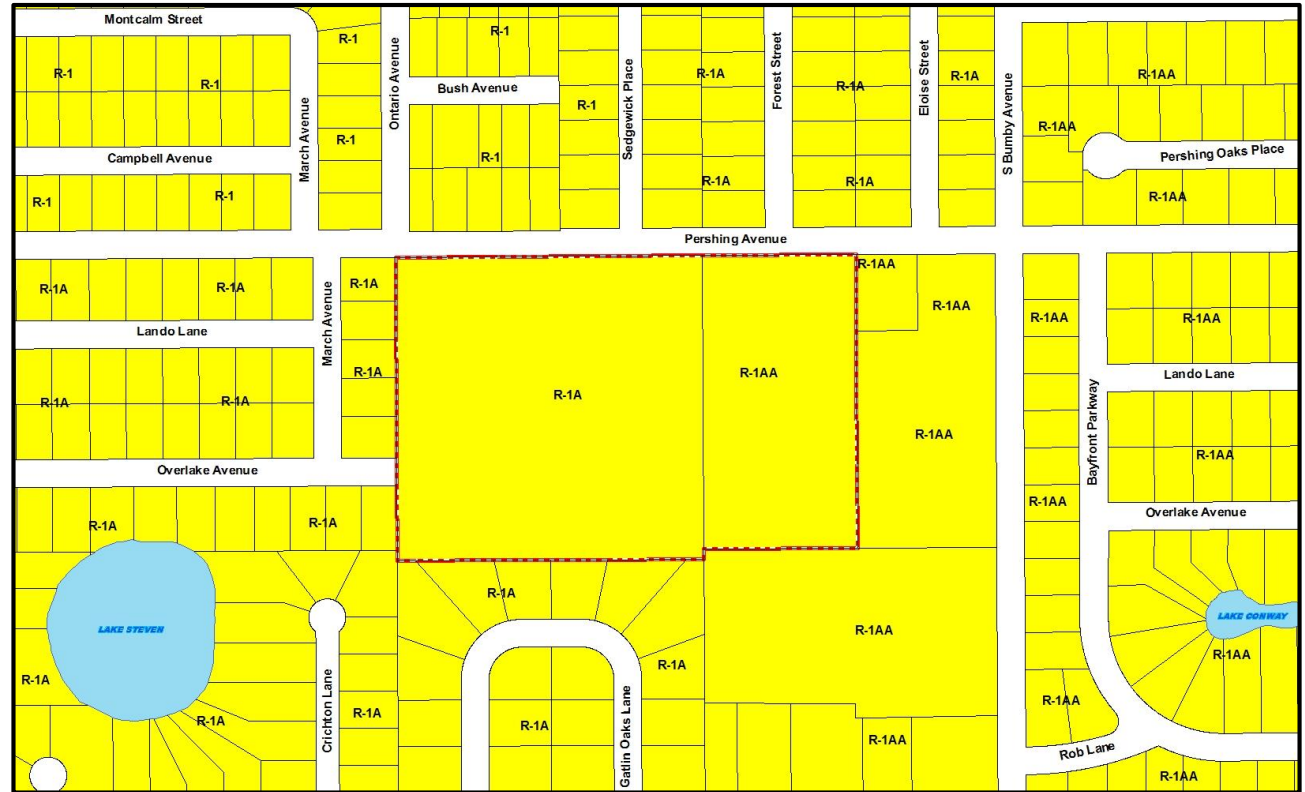
- Request to change the use from residential uses to K8 school
- Buffers shall comply with PSSR's
- Setbacks shall comply with Orange County code
- Access to site will be from existing ingress with egress on Pershing Avenue
- Bus access will be from Pershing Avenue



## Future Land Use Map

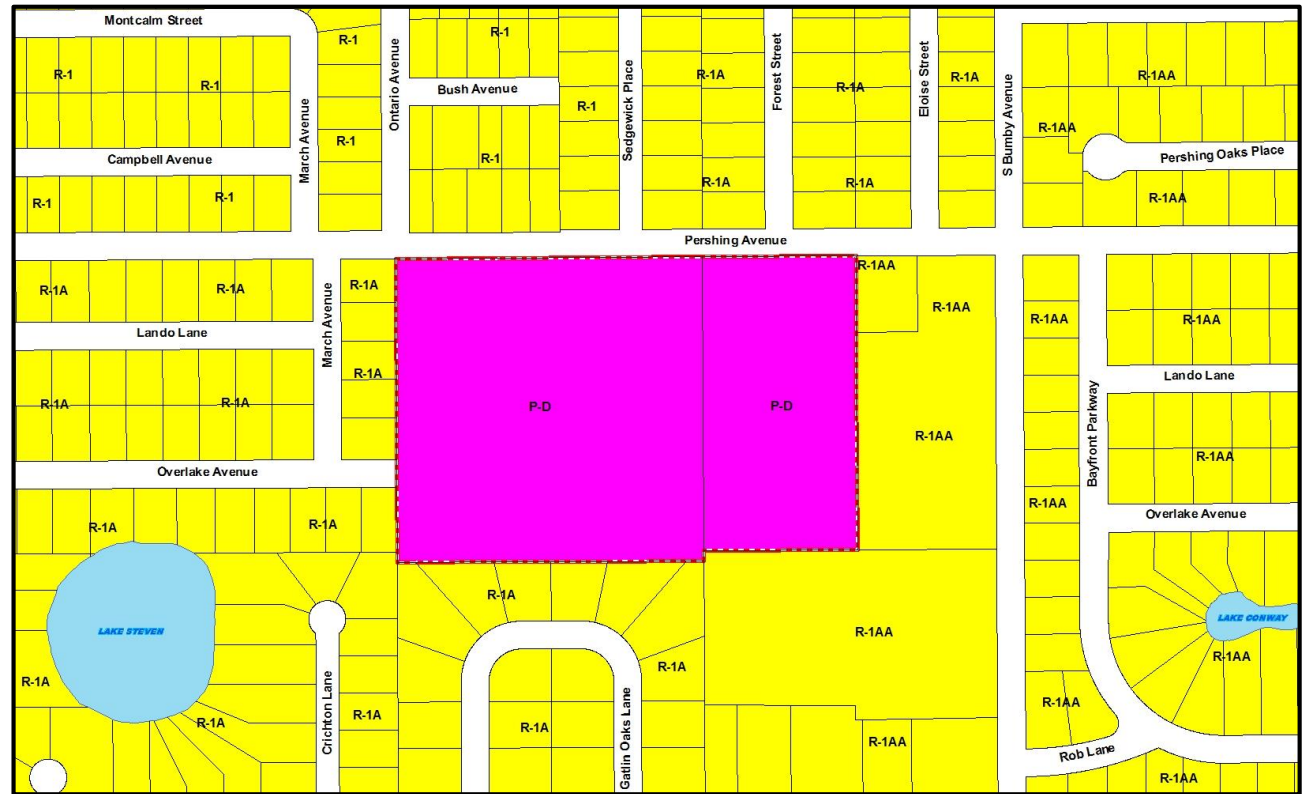


## Zoning Map





## Proposed Zoning Map



# What happens next.....

- ☐ Technical Review Group meeting
- ☐ Development Review Committee meeting
- ☐ Planning & Zoning Committee public hearing
- ☐ Board of County Commissioners public hearing

## Traffic Study-208-K8-SE Pershing K8

### **Recommendations**

#### **Separate Bus and Parent Loops**

Two separate driveways, Bus and Parent drop offs

#### **Queuing**

Traffic Study recommends 183 to 188 vehicle stacking on site.  
Proposed Site plan provides 194 cars

#### **Parking**

Traffic Study recommends 150 parking spaces. Proposed Site plan provides 159 spaces

#### **Bus Queuing**

Traffic Study recommends queuing for 13 buses. Proposed Site Plan provides queuing for 13 buses.

# Orange County Public Schools



SITE PLAN DATA	
PARKING SPACES PROVIDED	159
CAR QUEUING LENGTH PROVIDED	3,888 LF 194 CARS
BUS QUEUING: 13 BUSES	
SITE AREA : 14.8 ACRES	
RETENTION AREA (15%) PROVIDED	2.3 ACRES (101,554 SF)
BUILDING SQ. FT.	
78,787 SQ. FT.	1st FL
40,214 SQ. FT.	2nd FL
22,962 SQ. FT.	3rd FL
17,371 SQ. FT.	GYM
159,334 SQ. FT.	TOTAL

Conceptual 208-K8-SE-3 Pershing K8 Site



# Orange County Public Schools



Example – Reception Area



# Orange County Public Schools



Example – Media Center



# Orange County Public Schools



Example – Collaborative Area

# Orange County Public Schools



Example – Multi-Purpose Room



# Orange County Public Schools



Example – Gymnasium

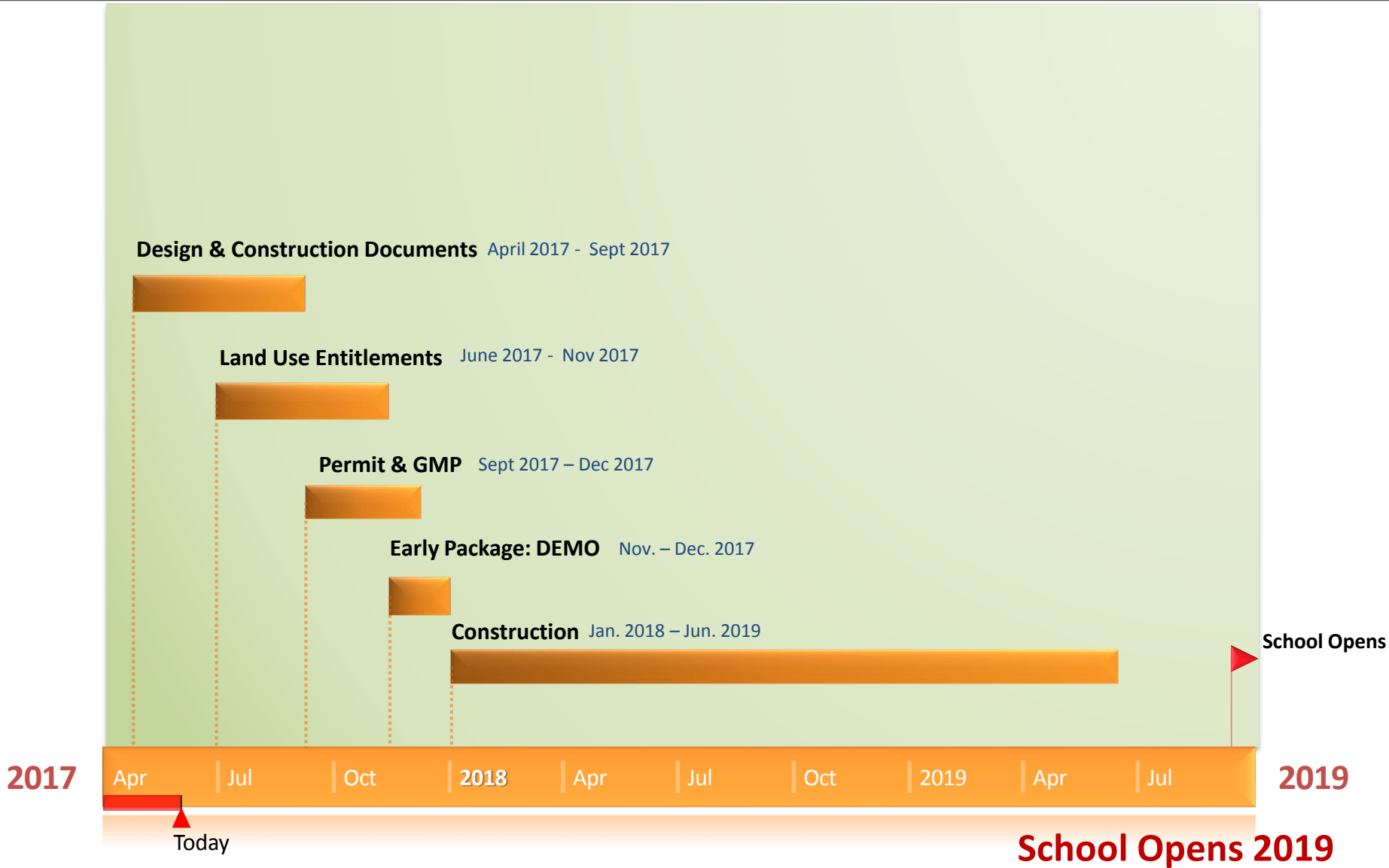


# Orange County Public Schools

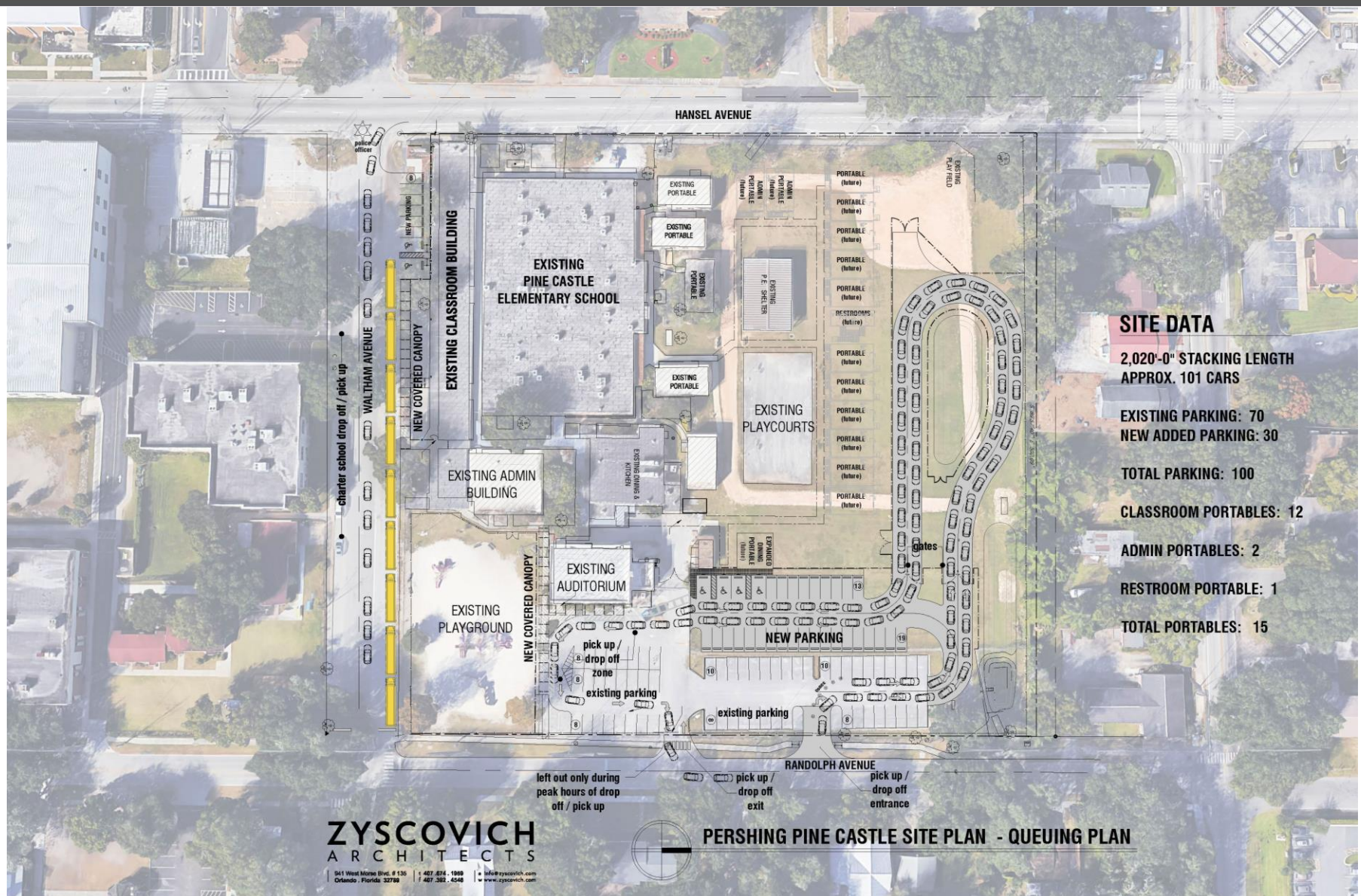


Example— Classrooms

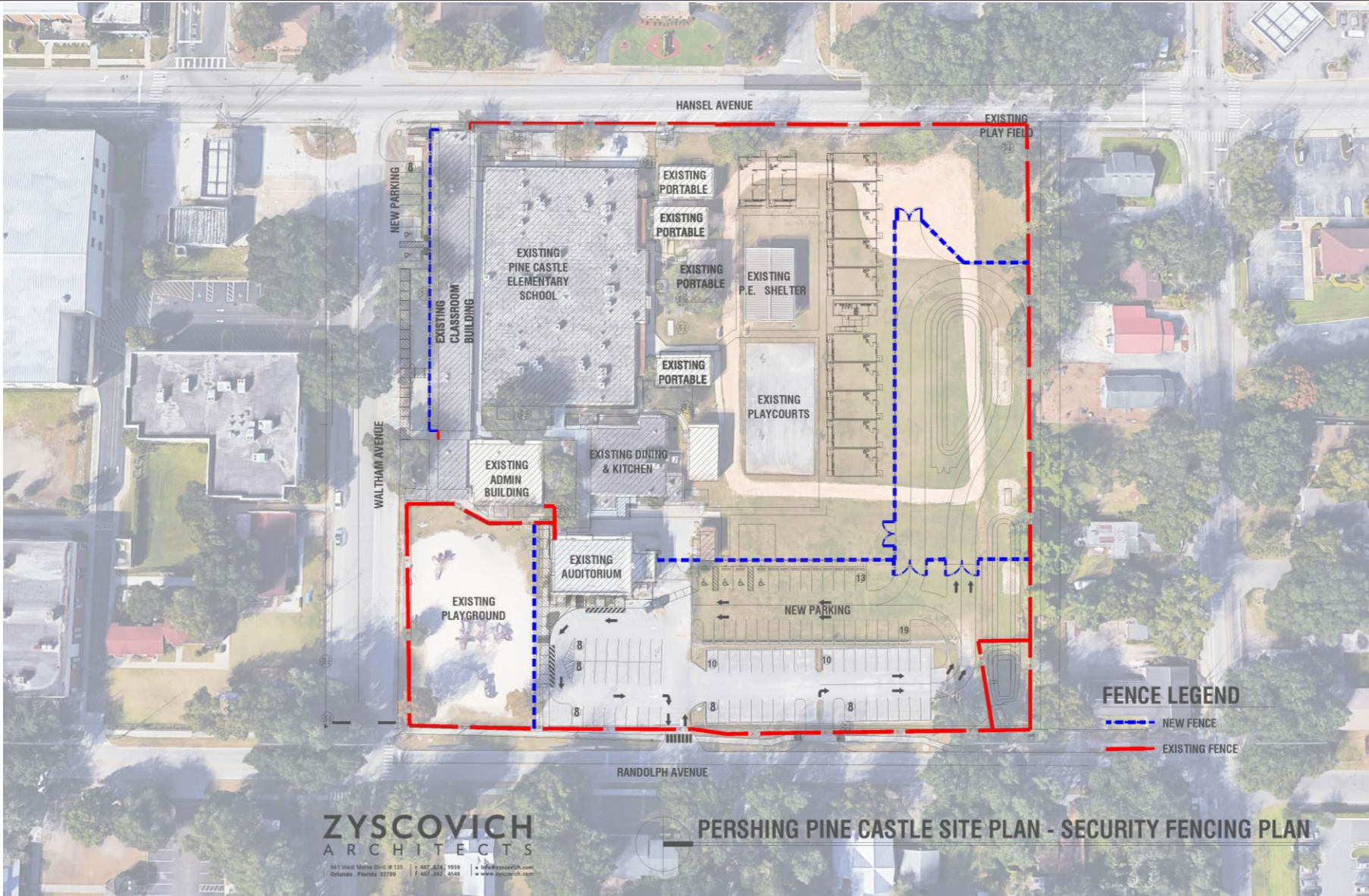
# Orange County Public Schools











# THANK YOU!

Thank you to Orange County taxpayers for the ½ penny sales tax, which makes this construction possible.

**QUESTIONS?**