

February 26, 2020

40% Construction Community Meeting

Pinar Elementary School

Please sign in on your mobile device: <https://communitymeeting.ocps.net/>



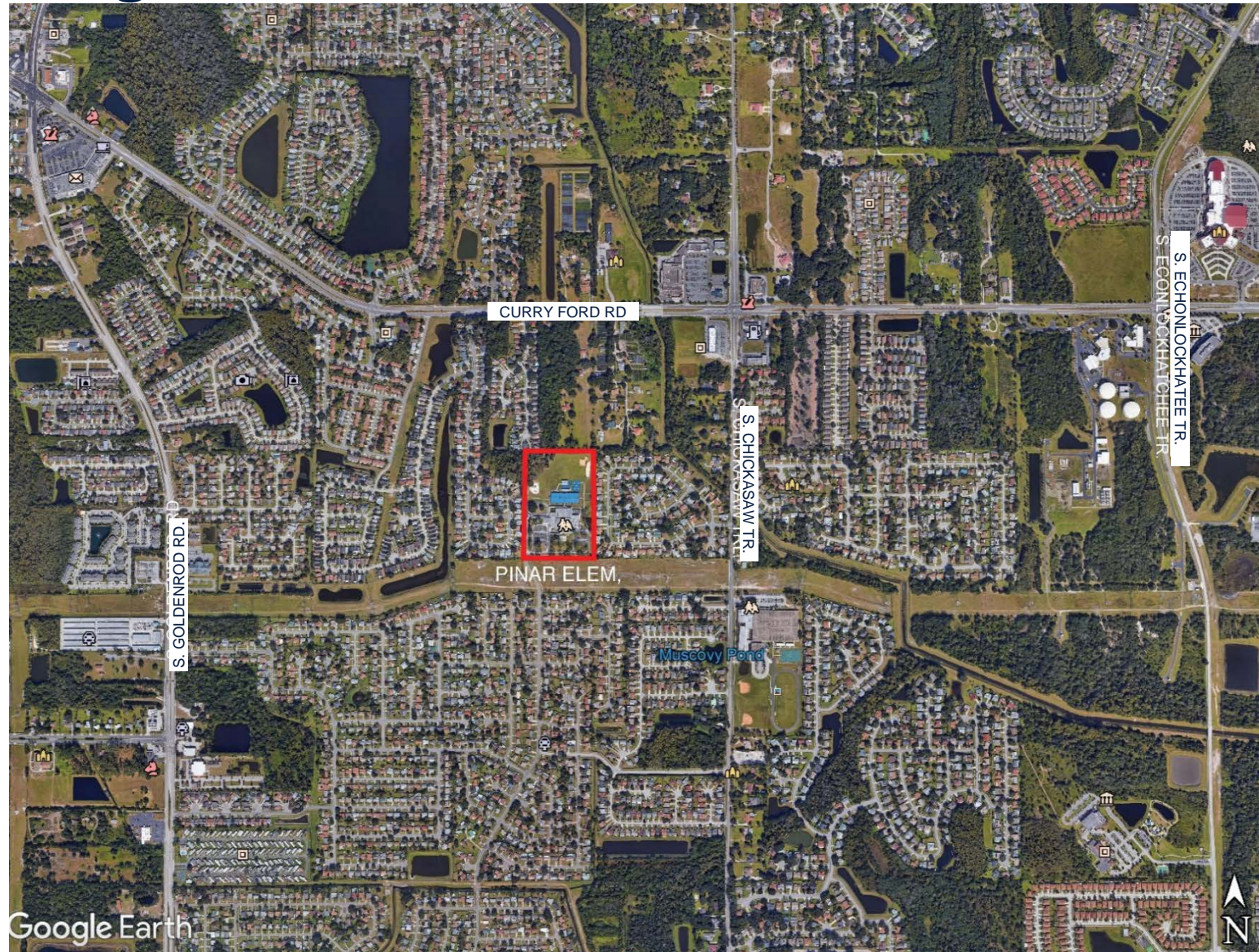
**Orange County
Public Schools**

Pinar Elementary School Meeting Agenda

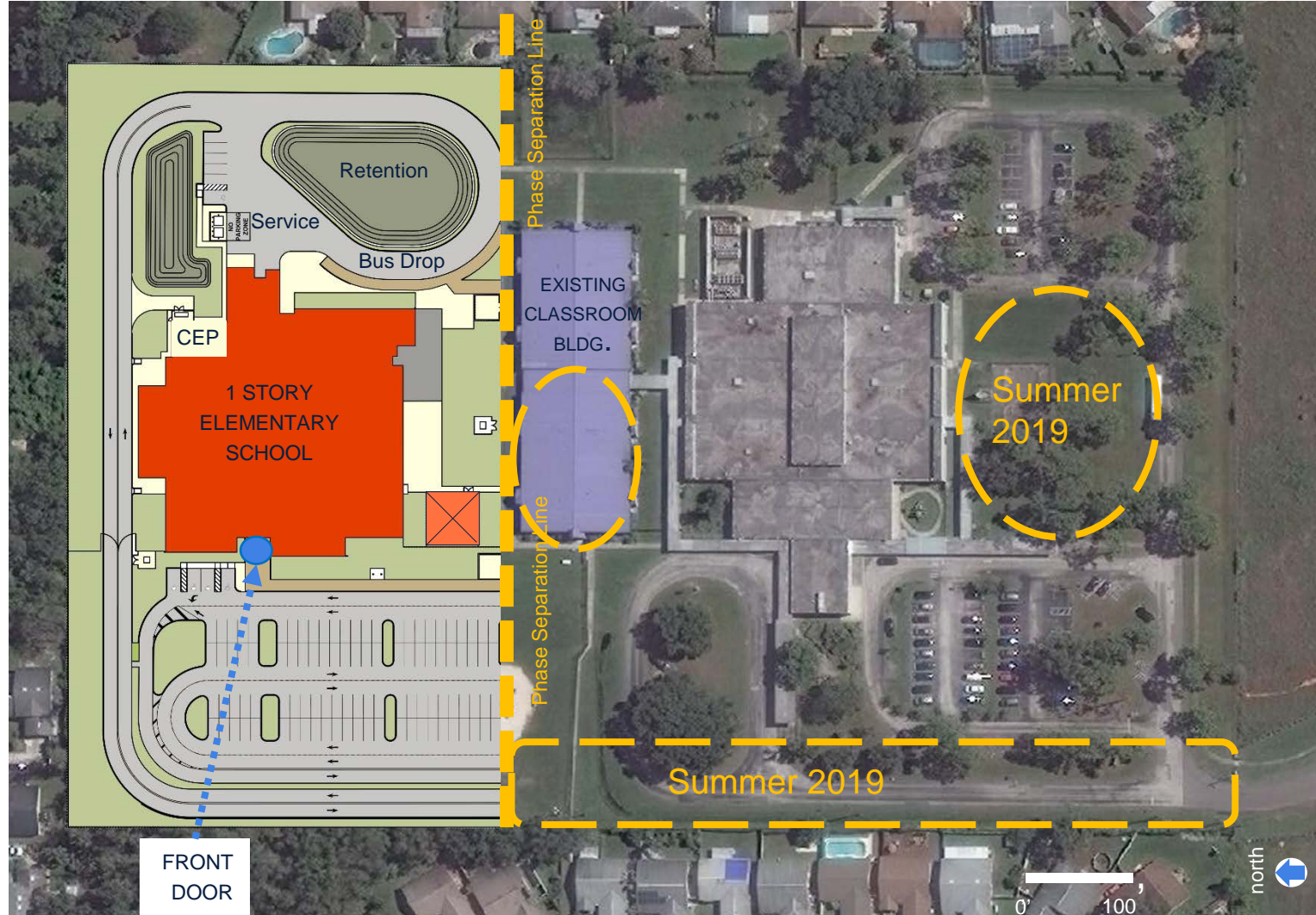
February 26, 2020 6:00 PM

- Welcome – School Board Member Johanna López
- Introductions – Lauren Roth/ Facilities Communications
- Project Update – Architect **SCHENKELSHULTZ**
□ □ □ ARCHITECTURE □ □ □
– Contractor R. L. Burns
- Questions and Answers
- Adjournment

Surrounding Context



Site Plan - Phase 1 & 2 May 2019 - August 2020



ES CONCEPT INFORMATION:

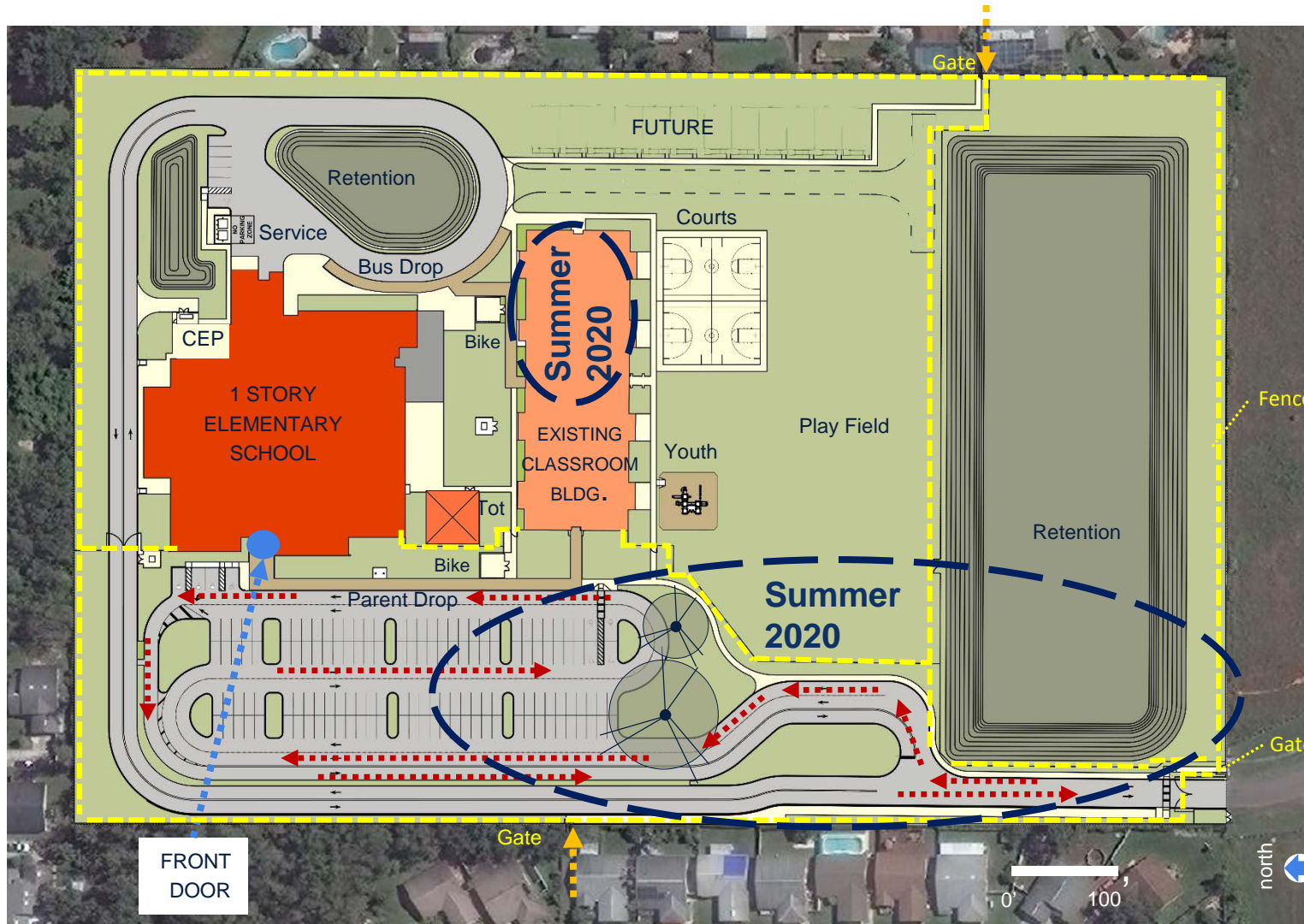
Parking: 140 cars
Stacking: 153 cars (30.6%)

TO CHICKASAW TRAIL ↑

Phase I – June 25, 2019 – July 29, 2019
Construct portion of pond and transfer fill to north side of site.
Begin renovation in building 200

Phase II – August 15, 2019- April 12, 2020
Complete the main building and portion of the parking and access drive

Site Plan Phase 3 May 2020 - July 2020



ES CONCEPT INFORMATION:

Parking: 140 cars
Stacking: 153 cars (30.6%)

TO CHICKASAW TRAIL

Phase III – April 12, 2020 – July 24, 2020

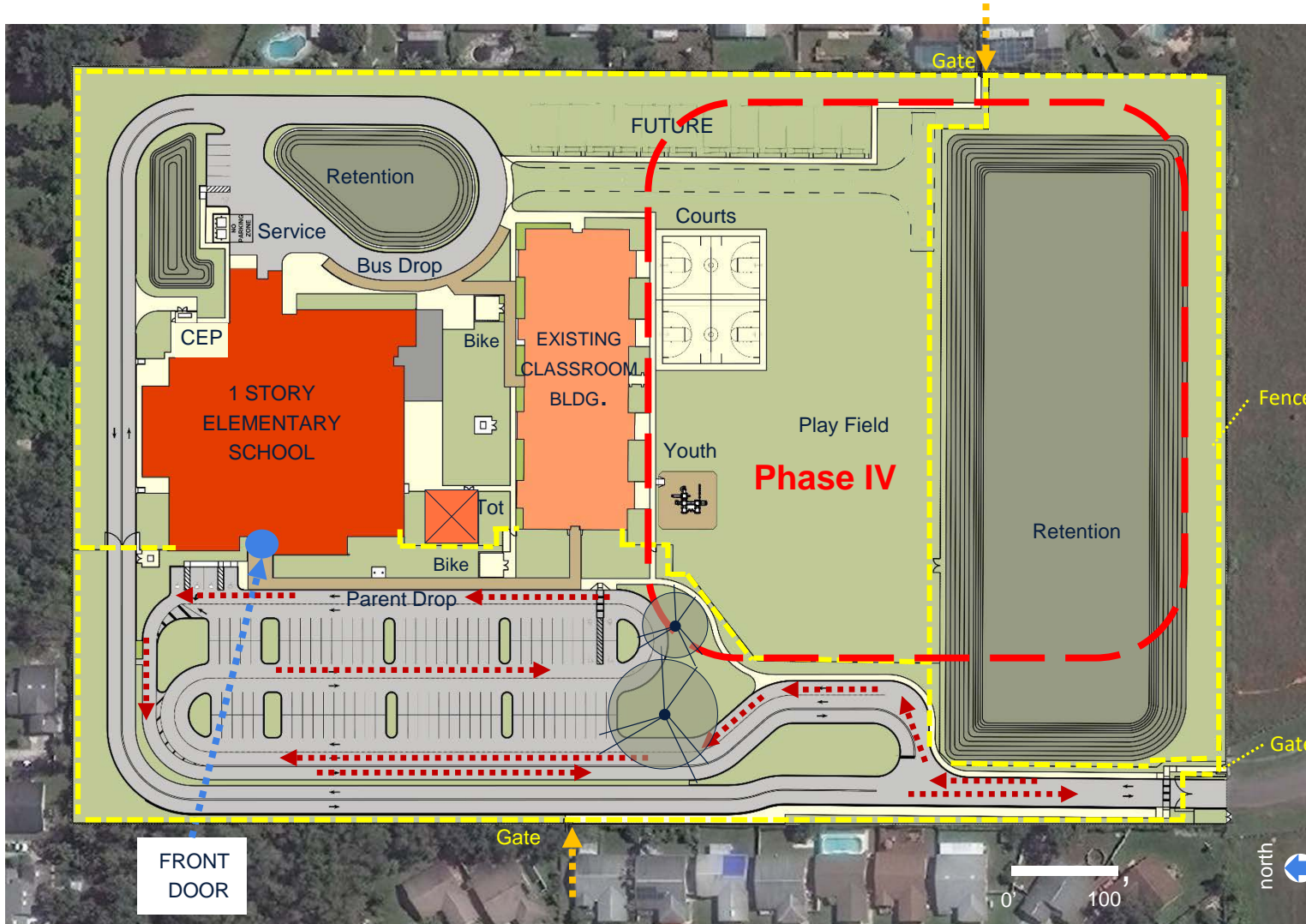
Complete the renovation of existing building
200 & 300

Complete the access drive and pond on south side of property

PLANNING PARAMETERS:

- 500 Student School with 500 Core
- Current enrollment 412
- Target +/-150 Parking
- School currently has 1 bus
- Bus loop accommodates 20 buses
- Plan for 12 future portables

Site Plan Phase 4 July 2020 -November 2020



Parking: 140 cars
Stacking: 153 cars (30.6%)

TO CHICKASAW TRAIL

Phase IV – July 24, 2020- October 2, 2020
Demolish the existing building and complete
playfields

PLANNING PARAMETERS:

- 500 Student School with 500 Core
- Current enrollment 412
- Target +/-150 Parking
- School currently has 1 bus
- Bus loop accommodates 20 buses
- Plan for 12 future portables

Site Aerial Map



Pinar Elementary School Forthcoming Milestones

February 26, 2020 6:00 PM

- Permanent Power – 02/28/20
- Kitchen Equipment Delivery – 03/02/20
- Chiller and Air Conditioning Start-Up – 03/02/20
- Acoustical Ceiling Installation – 03/02/2020
- Finishes and Punch – 03/30/2020
- Move In Begins – 07/06/2020

Progress Photos – June 2019



June 21, 2019

Empty Site – Day Zero

NTP Received

June 25, 2019

RL Burns Mobilized

June 26, 2019



Pinar Elementary Renovation



06-21-19

Progress Photos – July 2019



Pinar Elementary Renovation



July 28, 2019

32 Days on Site

Wetlands Mitigation

And Site Clearing

Complete, Office

Trailers and RL Burns

Field Operations Established

Progress Photos – August 2019



Pinar Elementary Renovation



August 21, 2019
56 Days on Site
 Under Slab Utilities
 Roughed and
 Foundation Form-
 Work Installed
 Site Improvements
 Under Way



Progress Photos - September 2019



Pinar Elementary Renovation



September 20, 2019

85 Days on Site

All Foundations and

Slab on Grade Placed

Pre-Cast Panel Forming

Begun, Site Improvements Continue



Progress Photos – October 2019



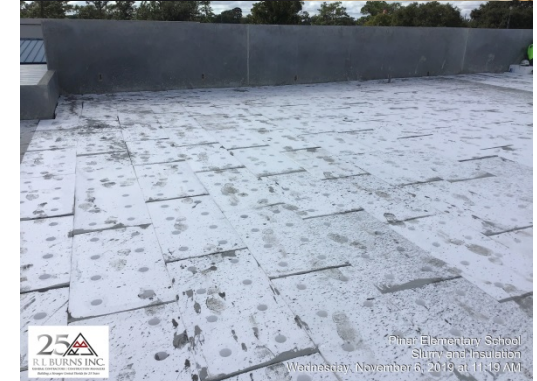
Pinar Elementary Renovation



October 24, 2019

119 Days on Site

Pre-Cast Panels
and Structural Steel
Erected. Roof Deck
and Insulation Installed



Pinar Elementary School
Slump and Insulation
Wednesday, November 6, 2019 at 11:49 AM

Progress Photos – November 2019



Pinar Elementary Renovation



November 21, 2019

147 Days on Site

Roof Membrane
and Exterior
Windows Installed,
Interior Framing Begun.
Site Utility Installation
Continues



Progress Photos – December 2019



Pinar Elementary Renovation



December 20, 2019

176 Days on Site

Interior Framing
Complete, Sheetrock
Installation Under Way.
MEP Rough Through-
Out Under Way



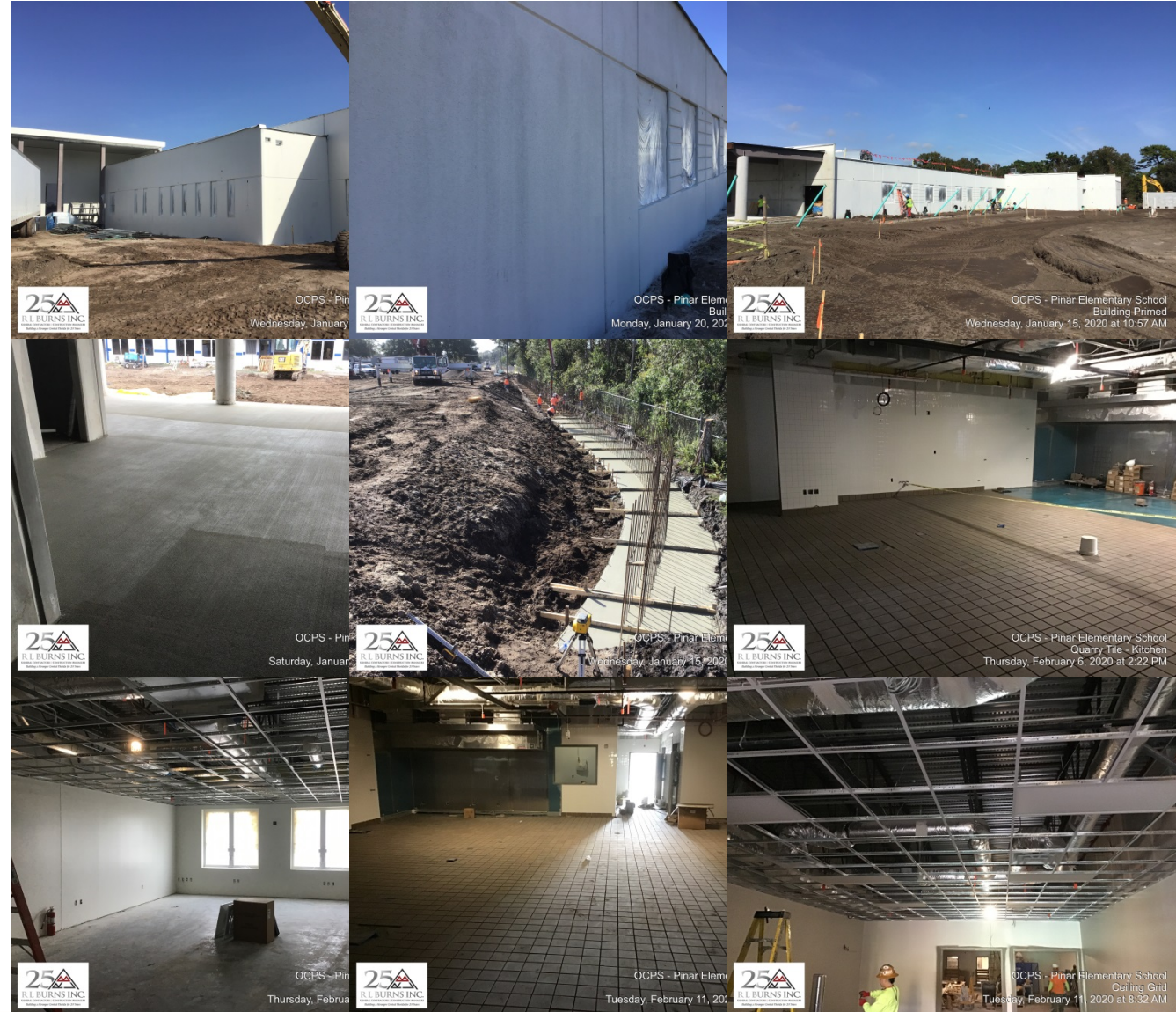
Progress Photos – January 2020



Pinar Elementary Renovation



January 22, 2019
180 Days on Site
 Exterior Complete,
 Site Improvements
 Continue, Interior Finishes
 (Paint, VCT, ACT, Ceramic
 Tile) 50% Complete



Progress Photos – February 2020



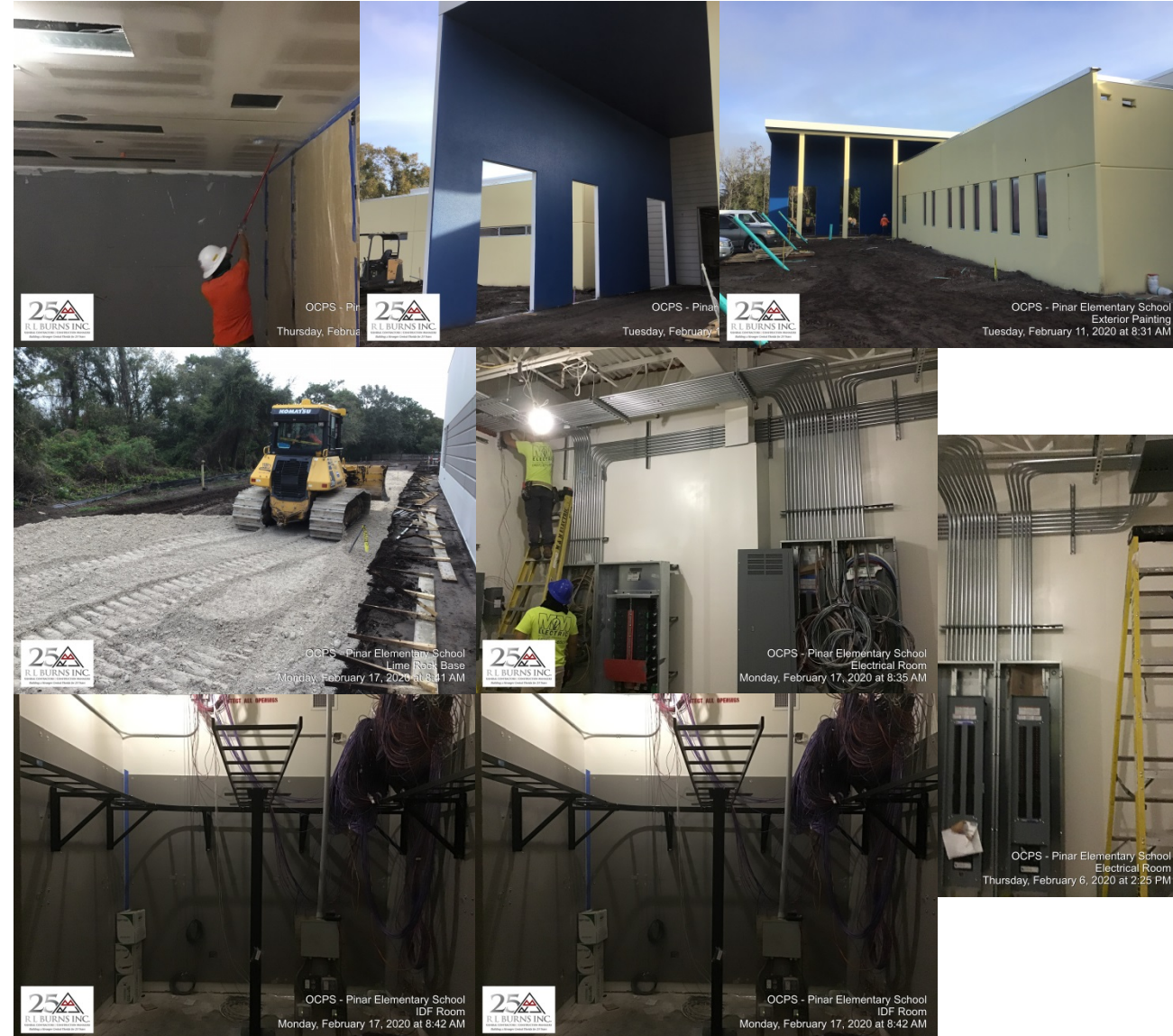
Pinar Elementary Renovation



February 19, 2020

208 Days on Site

Interior and Exterior Finishes
Continue. Site Improvements
Continue. Systems and
Equipment Installation



Exterior Elevation



Exterior Elevation



Exterior Elevation



Interior Spaces



Sustainability

- The new Pinar Elementary School is designed to meet Green Globes sustainable building standards. Sustainable Features Include:

Site

- Native/low water plants – reduce water consumption
- Low Impact Design (LID) stormwater design

Building

- 10% more energy efficient than ASHRAE 90.1 standard
- Lighting system and power outlets designed to turn lights and power off in unoccupied spaces (energy reduction)
- High Efficiency Chillers (10% energy reduction)
- Light colored roof to reduce heat gain and improves energy performance
- Energy Star rated equipment
- Water saving toilets, faucets, and fixtures
- All classrooms in the new building have daylighting
- Over 75% of ALL spaces in the new building have daylighting
- Thermal efficient windows/glazing



Questions & Answers