

January 15, 2020

40% Construction Community Meeting

Rolling Hills Elementary School

Please sign in on your mobile device: <https://communitymeeting.ocps.net/>



**Orange County
Public Schools**

Rolling Hills Elementary School Meeting Agenda

January 15, 2020, 6:30 PM

- Rolling Hills Elementary School Replacement

Meeting Agenda

- Welcome – School Board Member: Karen Castor Dentel
- Introductions – Lauren Roth/ Facilities Communications
- Project Update – Architect: **ZYSCOVICH**
ARCHITECTS

Contractor



Pirtle Construction Co.

- Questions and Answers
- Adjournment

Swing School

3607 Damon Road, Apopka, FL 32703

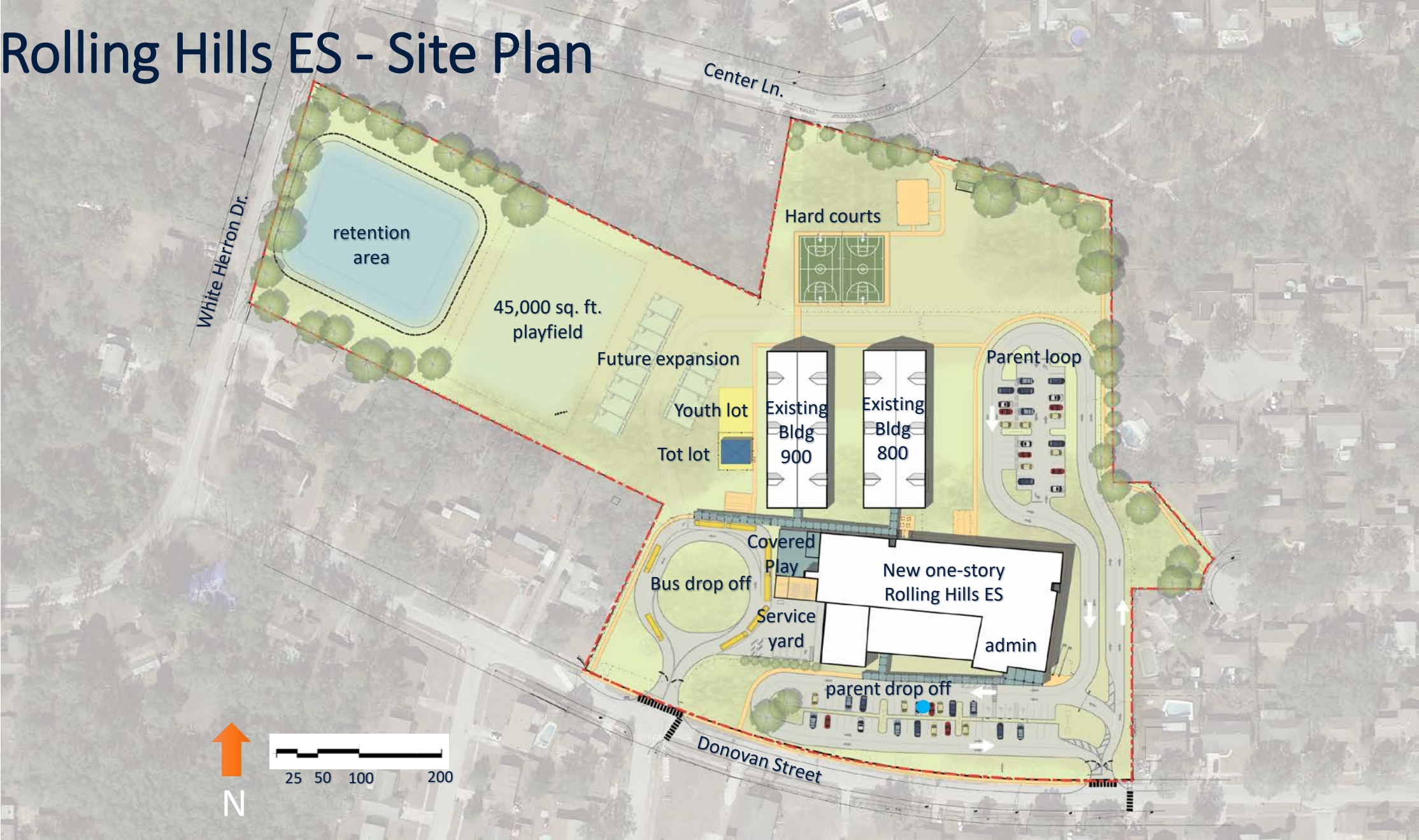
- Summer school to take place at Pine Hills ES
- Staff and Teachers to move into new school July 2020



Site Analysis



Rolling Hills ES - Site Plan





OCPS Rolling Hills Elementary School
Orange County Public Schools

ZYSCOVICH
ARCHITECTS
WE MAKE PEOPLE PLACES



OCPS Rolling Hills Elementary School
Orange County Public Schools

ZYSCOVICH
ARCHITECTS
WE MAKE PEOPLE PLACES



OCPS Rolling Hills Elementary School
Orange County Public Schools

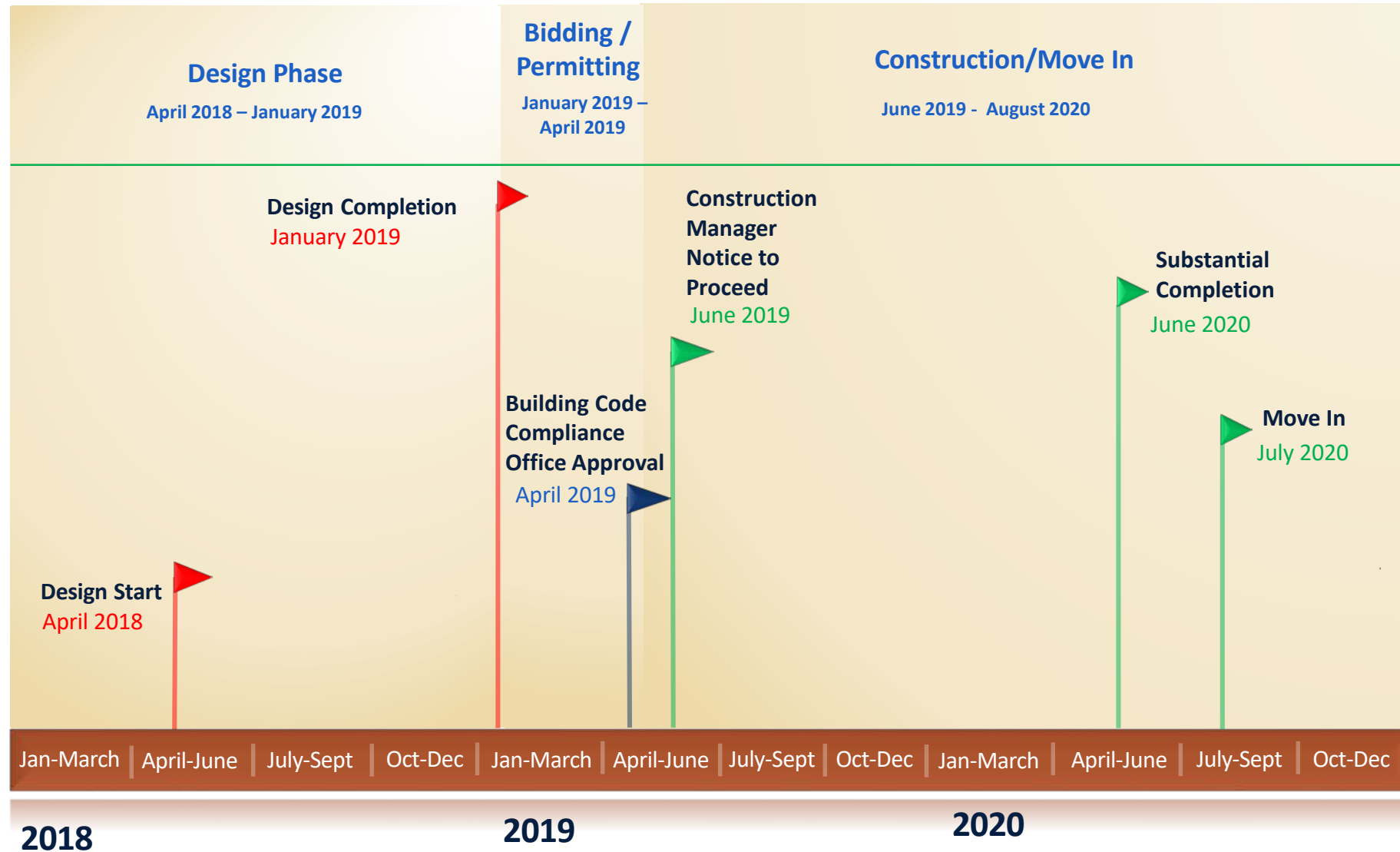
ZYSCOVICH
ARCHITECTS
WE MAKE PEOPLE PLACES



OCPS Rolling Hills Elementary School
Orange County Public Schools

ZYSCOVICH
ARCHITECTS
WE MAKE PEOPLE PLACES

Project Schedule



Construction Update and Milestones

- Notice to Proceed (NTP) was June 25, 2019.
- Site clearing, import of fill, and de-mucking were completed in August.
- Tilt wall panels were completed in October.
- Structural Steel Erection was completed in November.
- Installation of deep storm drainage was completed in November.
- Roofing work was completed in December.
- Exterior painting is ongoing.
- Interior framing and finishes are ongoing.
- Project remains on schedule for Substantial Completion Summer 2020.



Rolling Hills Elementary



01-18-19



Rolling Hills Elementary



08-20-19



Rolling Hills Elementary



09-19-19



Rolling Hills Elementary



10-23-19



Rolling Hills Elementary



11-20-19



Rolling Hills Elementary



12-19-19

Forming of Tilt Panels on Casting Beds



Pouring of Tilt Panels with a Boom Pump

Orange County Public Schools

Rolling Hills Elementary Replacement

Erection of Tilt Panels with 250 Ton Crawler Crane



Structural Steel for Roof Deck

Preparation of Tilt Panels for Structural Steel Installation



Roof Deck Installation

Installation of Roof Insulation and Lightweight Concrete



Chillers Lifted into Place

Installation of Deep Storm Drainage Pipe and Structures



Grading and Base Infill for Hard Courts

Painting of Interior Walls in Renovation Buildings



Painting of Window Frames in Renovation Buildings



Questions & Answers