

March 27, 2019

Design/Construction Kick-off

Community Meeting

Site 20-E-SW-4 ES Relief

Please sign in on your mobile device: <http://communitymeeting.ocps.net/>



**Orange County
Public Schools**

Site 20-E-SW-4 ES Relief Meeting Agenda

6:00pm, March 27, 2019; Waterbridge ES Cafeteria

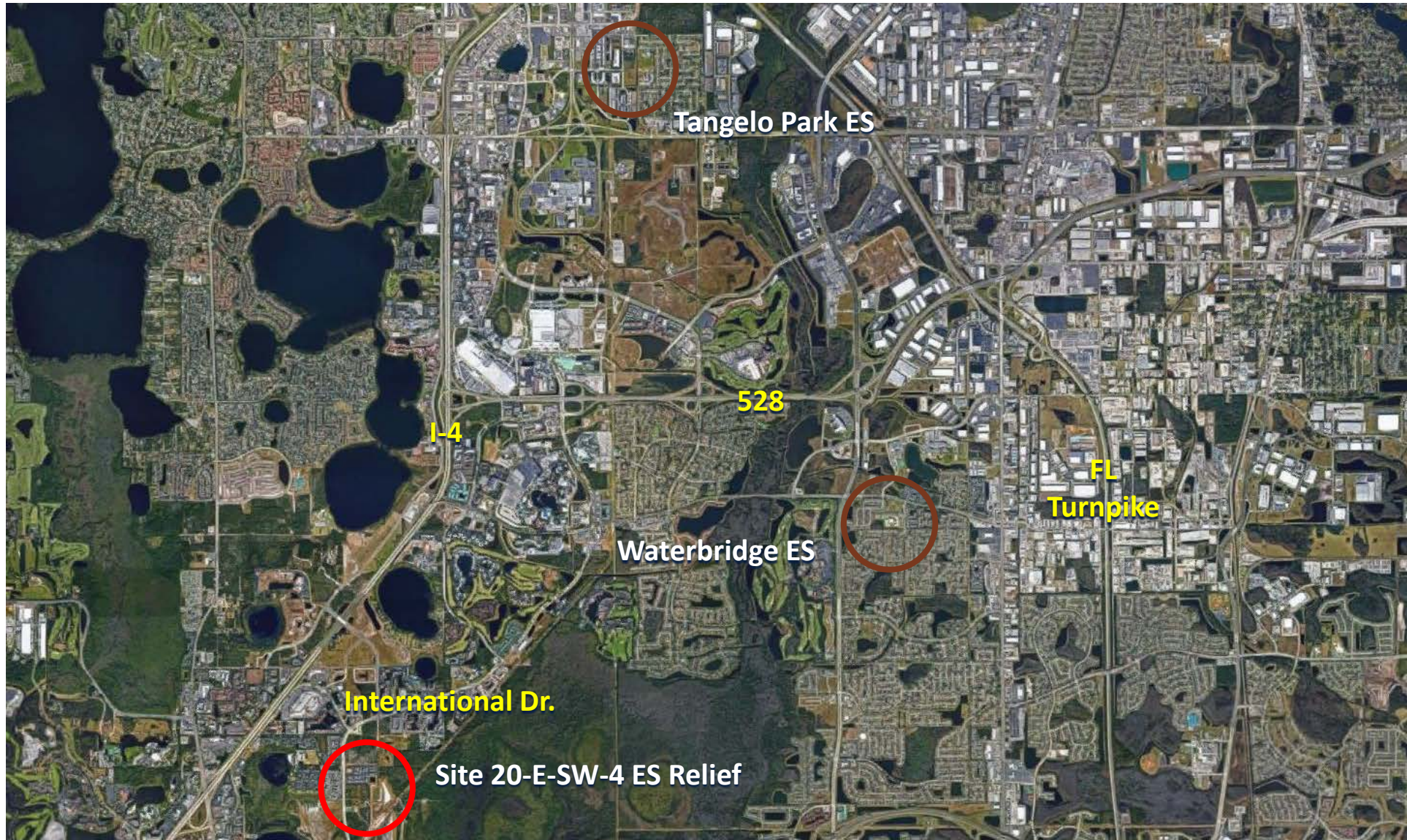
- Welcome – School Board Members - Pam Gould - District 4
- Introductions - Facilities Meeting Organizer, Jessma Lambert
- Governmental Approvals – Julie Salvo, Facilities Planning
- Project Update – Architect: Rhodes+Brito Architects
Construction Manager: CORE Construction
- Questions and Answers
- Adjournment

Site 20-E-SW-4 ES Relief

Local Government Approval Process

- Property zoned P-D (Site #20-E-W-4 International Drive Area Elementary School PD/LUP)
- Project is subject to Development Plan (DP) approval by Orange County's Development Review Committee (DRC) (In Progress)

Site 20-E-SW-4 ES Relief



Site 20-E-SW-4 ES Relief



Site 20-E-SW-4 ES Relief

Planned Facility:

NEW Campus on vacant site to
Meet District Standards for
Elementary Schools:

- Prototypical Core Spaces

Enhanced Learning Environment:

- Latest Technology
- Planned Site Circulation
- Safety
- Community Asset



Site 20-E-SW-4 ES Relief

LEGEND

- PEDESTRIAN ACCESS
- SHARED PEDESTRIAN / BICYCLE ACCESS

SITE DATA

SITE AREA = ± 19.97 ACRES

PARKING = AS REQUIRED

QUEUING:

Required:

167 cars at 3,240LF

20% Of 837 Student Stations

BUSES = 15



Site 20-E-SW-4 ES Relief



Example - Classroom

Site 20-E-SW-4 ES Relief

Planned Facility:

☑ Technology :

Campus

The technology package will include:

- Student and teacher computers
- Interactive Flat Panel
- White boards
- Skills labs (Computer & Science)
- Wireless Access
- Audio Enhancement



Site 20-E-SW-4 ES Relief

Planned Facility:

☑ Media Center

The Media Center will include:

- Genius bar
- Library tables for an entire class
- Story-telling area
- CCTV studio
- Audio Enhancement



Site 20-E-SW-4 ES Relief

Planned Facility:

☒ Cafeteria

The Cafeteria will include:

- Kitchen
- Two Serving Lines
- Teacher Dining
- Elevated Stage
- Extended Day Office
- Restrooms



Site 20-E-SW-4 ES Relief

Planned Facility:

☑ Specialty

Classrooms

- Art Classroom with kiln
- Science Classroom
- Music Classroom



Example – Music Room

Site 20-E-SW-4 ES Relief

Planned Facility:

- ☑ Administration

The administrative area includes:

- Single point of entry during school hours
- Lobby
- Administrative offices, workroom & storage
- Large conference room
- Clinic
- Teacher planning areas



Site 20-E-SW-4 ES Relief

Planned Facility:

☒ Physical Education

Physical Education will include:

- PE Office and storage
- Covered play canopy
- Basketball Courts
- Tot lot play structure
- Youth lot play structure
- Playfields



Site 20-E-SW-4 ES Relief

Planned Facility:

☑ Site Circulation

- On-site car stacking
- On-site parking
- Bus loop
- Covered walkways
- Safe pedestrian paths
- Bike racks



Sustainability



Sustainable Features

Site:

- Low Impact Design (LID) stormwater design
- Native/low water plants – reduce water consumption

Building:

- 10% more energy efficient than ASHRAE 90.1 standard
- High Efficiency Chillers (8% energy reduction)
- Light colored roof to reduce heat gain and improves energy performance
- Energy Star rated equipment
- Water saving toilets, faucets, and fixtures
- All general classrooms have daylighting
- Over 75% of ALL spaces have daylighting
- Thermal efficient windows/glazing
- Fully automated building controls system 10% more energy

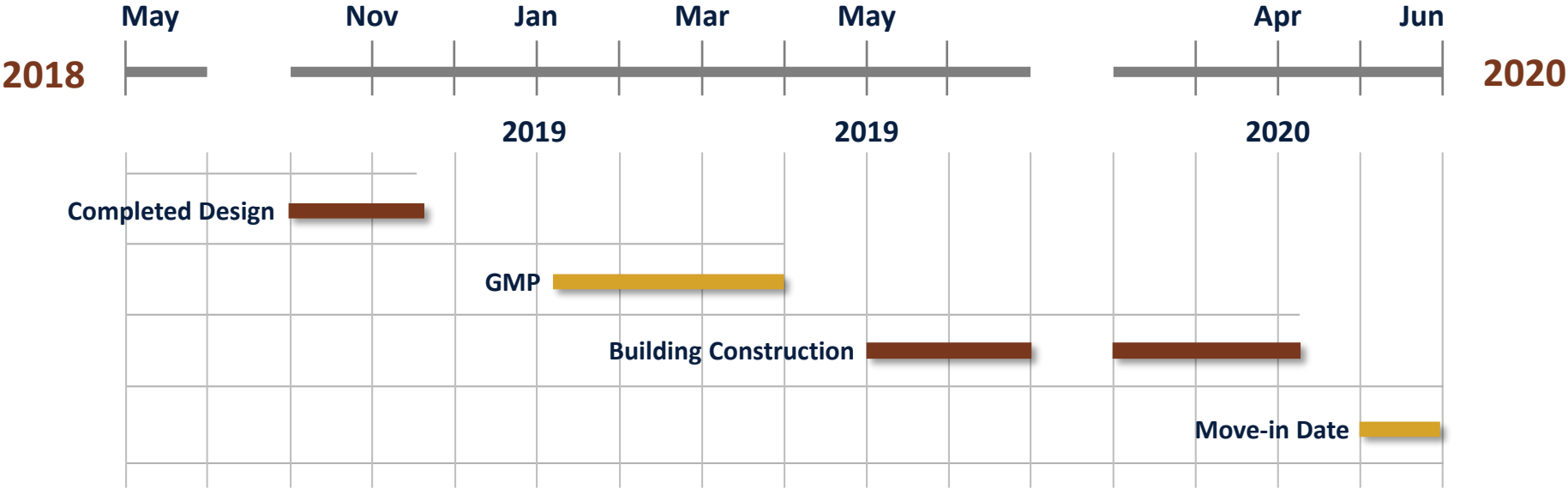
Site 20-E-SW-4 ES Relief



Site 20-E-SW-4 ES Relief



Design & Construction Schedule





Questions & Answers

Site 20-E-SW-4 ES Relief



West Elevation

Site 20-E-SW-4 ES Relief

