

Orange County Public Schools



Site 20-E-SW-4 ES Relief
Planning Phase Community Meeting
May 21, 2018

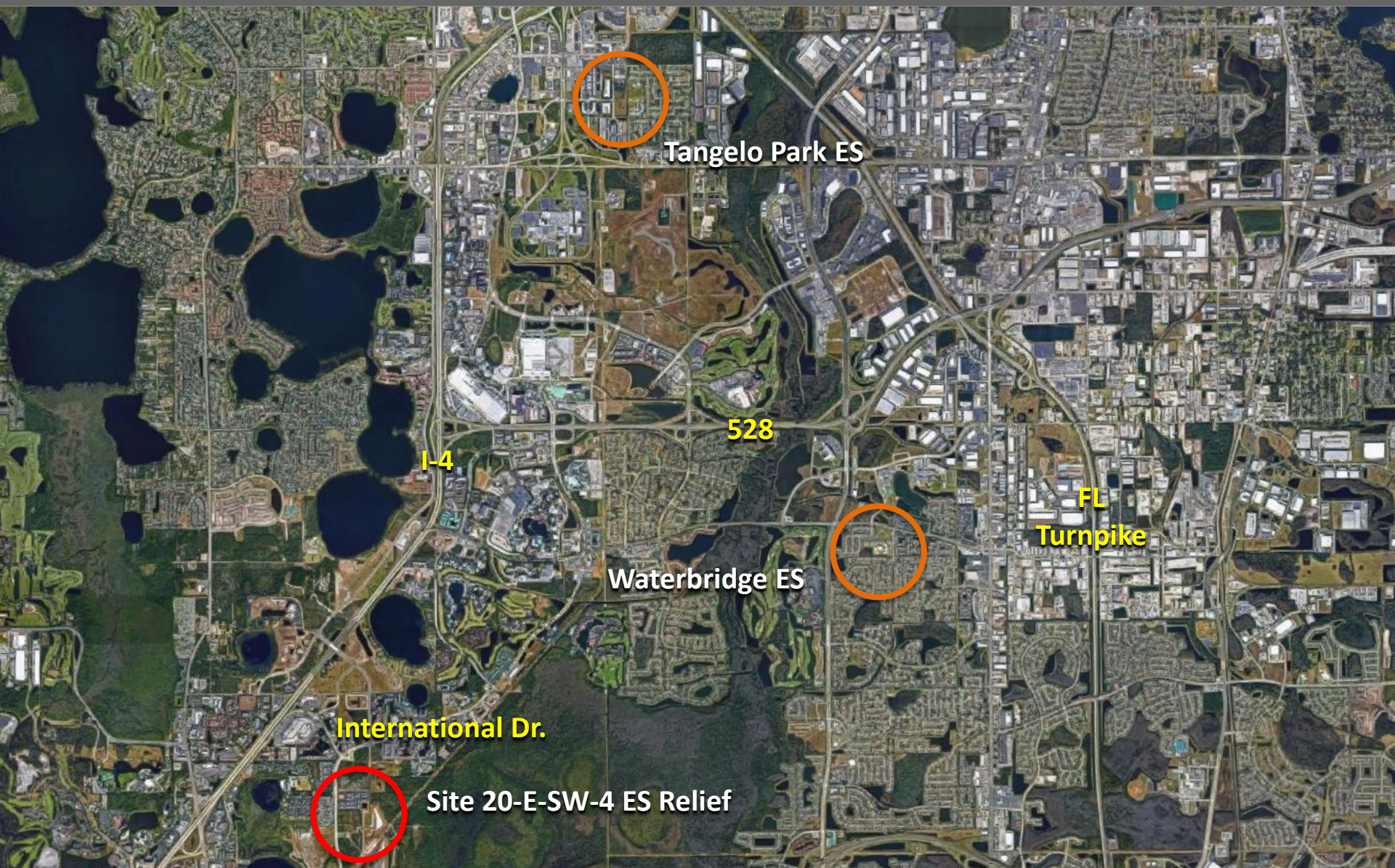
Meeting Agenda

6:00pm, May 21, 2018; Waterbridge ES Cafeteria

- Welcome – School Board Member, Mrs. Linda Kobert
- Introductions - Facilities Meeting Organizer, Jessma Lambert
- Governmental Approvals – Julie Salvo, Facilities Planning
- Project Update – Architect: Rhodes+Brito Architects
Construction Manager: TBD
- Questions and Answers
- Adjournment

Local Government Approval Process

- Property zoned P-D (Site #20-E-W-4 International Drive Area Elementary School PD/LUP)
- Project is subject to Development Plan (DP) approval by Orange County's Development Review Committee (DRC)





Planned Facility:

NEW Campus on vacant site to Meet District Standards for Elementary Schools:

- Prototypical Core Spaces

Enhanced Learning Environment:

- Latest Technology
- Planned Site Circulation
- Safety
- Community Asset



- LEGEND
- PEDESTRIAN ACCESS
 - SHARED PEDESTRIAN / BICYCLE ACCESS

SITE DATA

SITE AREA = ± 19.97 ACRES

PARKING = AS REQUIRED

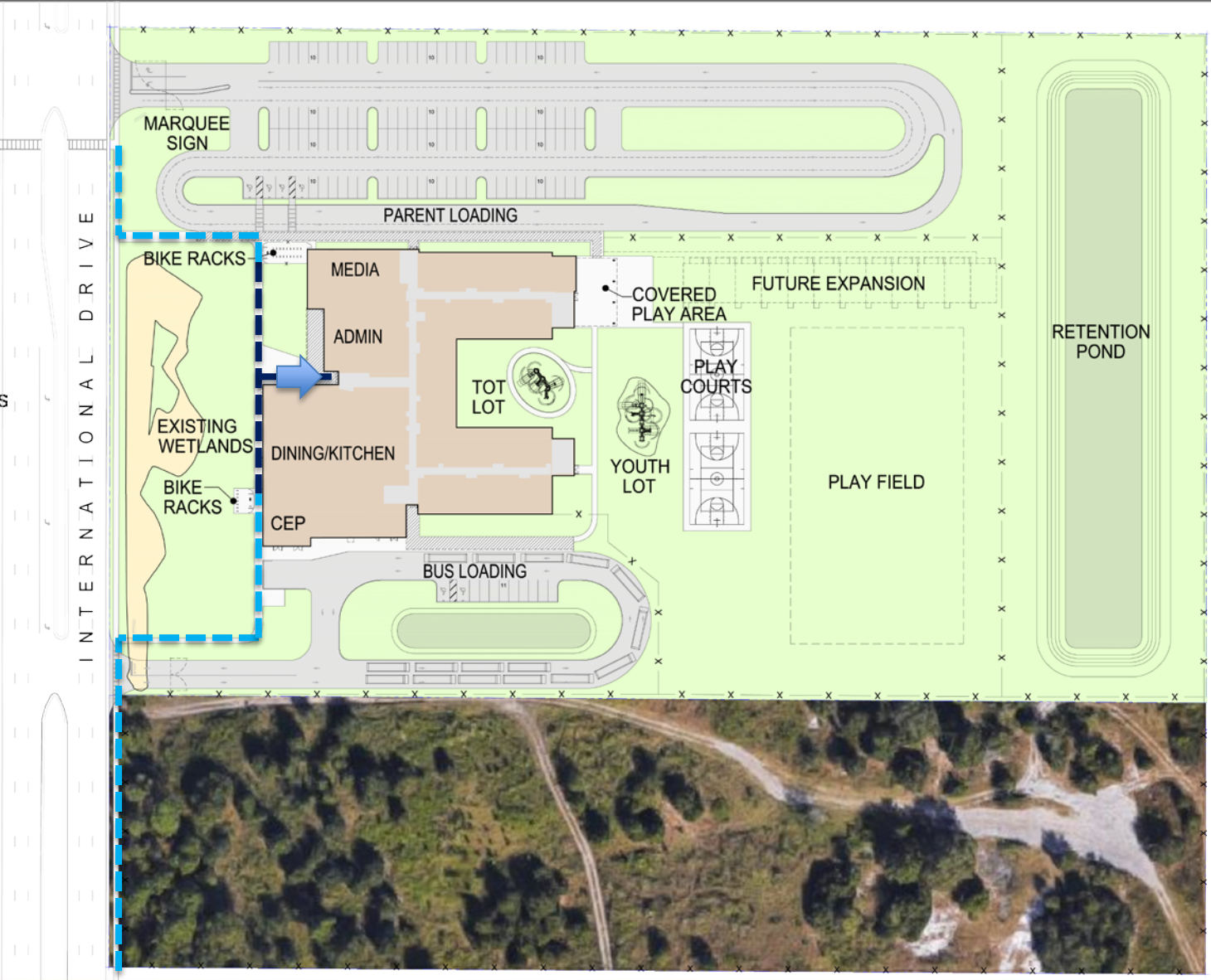
QUEUING:

Required:

167 cars at 3,240LF

20% Of 837 Student Stations

BUSES = 15



- LEGEND
- PEDESTRIAN ACCESS
 - SHARED PEDESTRIAN / BICYCLE ACCESS

SITE DATA

SITE AREA = ± 19.97 ACRES

PARKING = AS REQUIRED

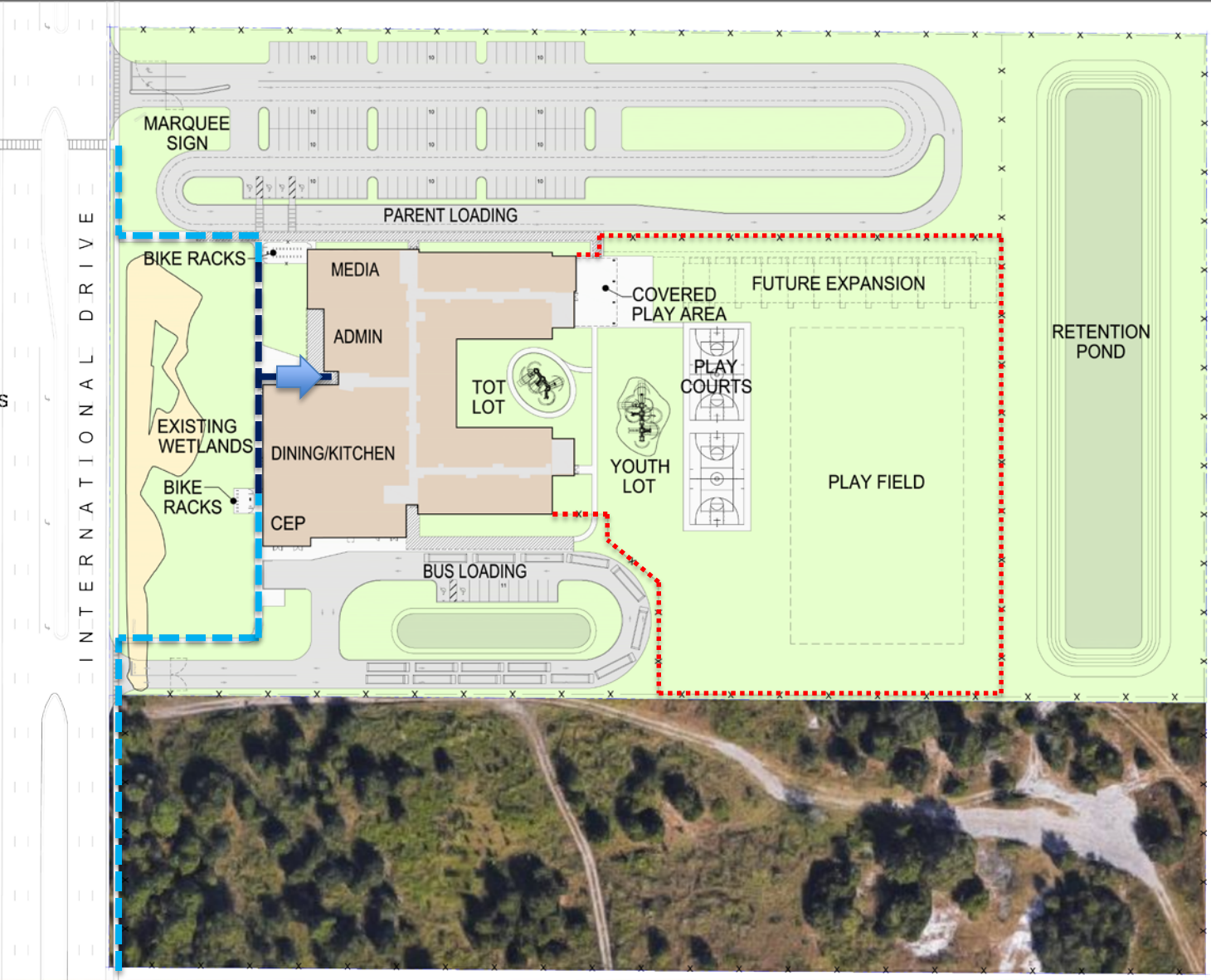
QUEUING:

Required:

167 cars at 3,240LF

20% Of 837 Student Stations

BUSES = 15





Planned Facility:

☑ Technology : Campus

The technology package will include:

- Student and teacher computers
- Interactive Flat Panel
- White boards
- Skills labs (Computer & Science)
- Wireless Access
- Audio Enhancement



Planned Facility:

☑ Media Center

The Media Center will include:

- Genius bar
- Library tables for an entire class
- Story-telling area
- CCTV studio
- Audio Enhancement



Planned Facility:

☒ Cafeteria

The Cafeteria will include:

- Kitchen
- Two Serving Lines
- Teacher Dining
- Elevated Stage
- Extended Day Office
- Restrooms



Planned Facility:

☑ Specialty Classrooms

- Art Classroom with kiln
- Science Classroom
- Music Classroom



Planned Facility:

- ☑ Administration

The administrative area includes:

- Single point of entry during school hours
- Lobby
- Administrative offices, workroom & storage
- Large conference room
- Clinic
- Teacher planning areas



Planned Facility:

- ☑ Physical Education

Physical Education will include:

- PE Office and storage
- Covered play canopy
- Basketball Courts
- Tot lot play structure
- Youth lot play structure
- Playfields



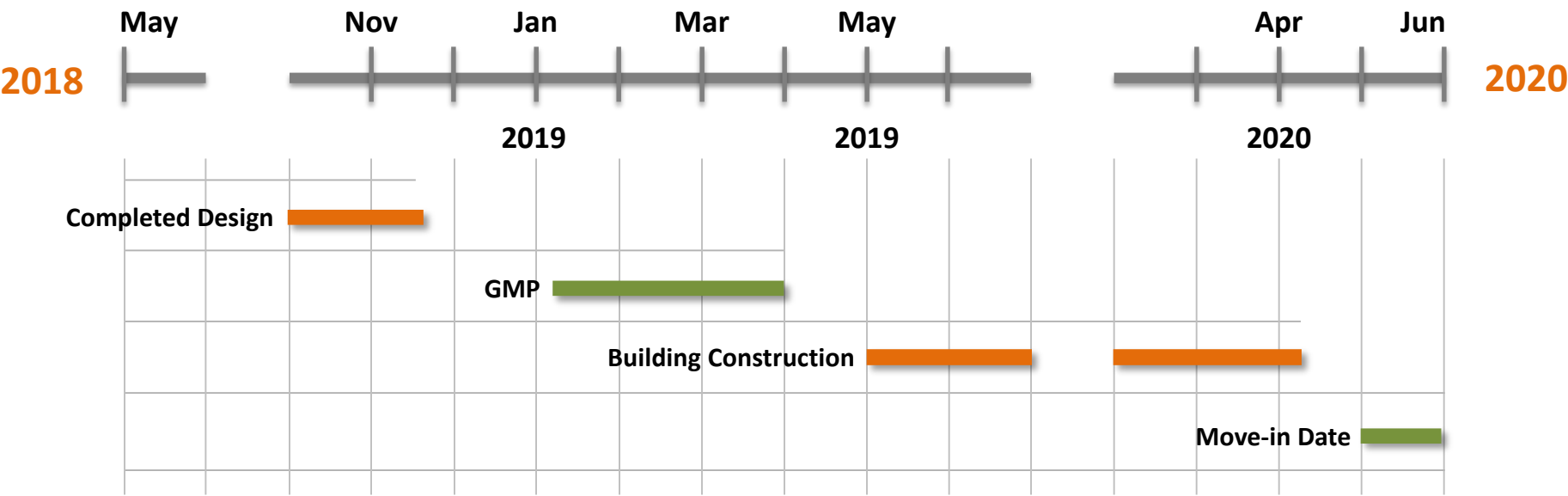
Planned Facility:

☒ Site Circulation

- On-site car stacking
- On-site parking
- Bus loop
- Covered walkways
- Safe pedestrian paths
- Bike racks



Design & Construction Schedule



Thank you to the Orange County taxpayers, who make our construction program possible.

Questions?