

April 15, 2019

100% Design/Construction Kick-off Community Meeting

Site 85-E-W-4 ES Relief

Please sign in on your mobile device: <http://communitymeeting.ocps.net/>



**Orange County
Public Schools**

Site 85-E-W-4 ES Relief Meeting Agenda

6:00pm, April 15, 2019; Independence ES Cafeteria

- Welcome – School Board Members - Pam Gould - District 4
- Introductions - Facilities Meeting Organizer, Jessma Lambert
- Governmental Approvals – Julie Salvo, Facilities Planning
- Project Update
 - Architect: Rhodes+Brito Architects
 - Construction Manager: OHL, Teaming with Albu & Associates
- Questions and Answers
- Adjournment

Site 85-E-W-4 ES Relief

Local Government Approval Process

- Development Plan (DP) review and approval by Orange County Development Review Committee

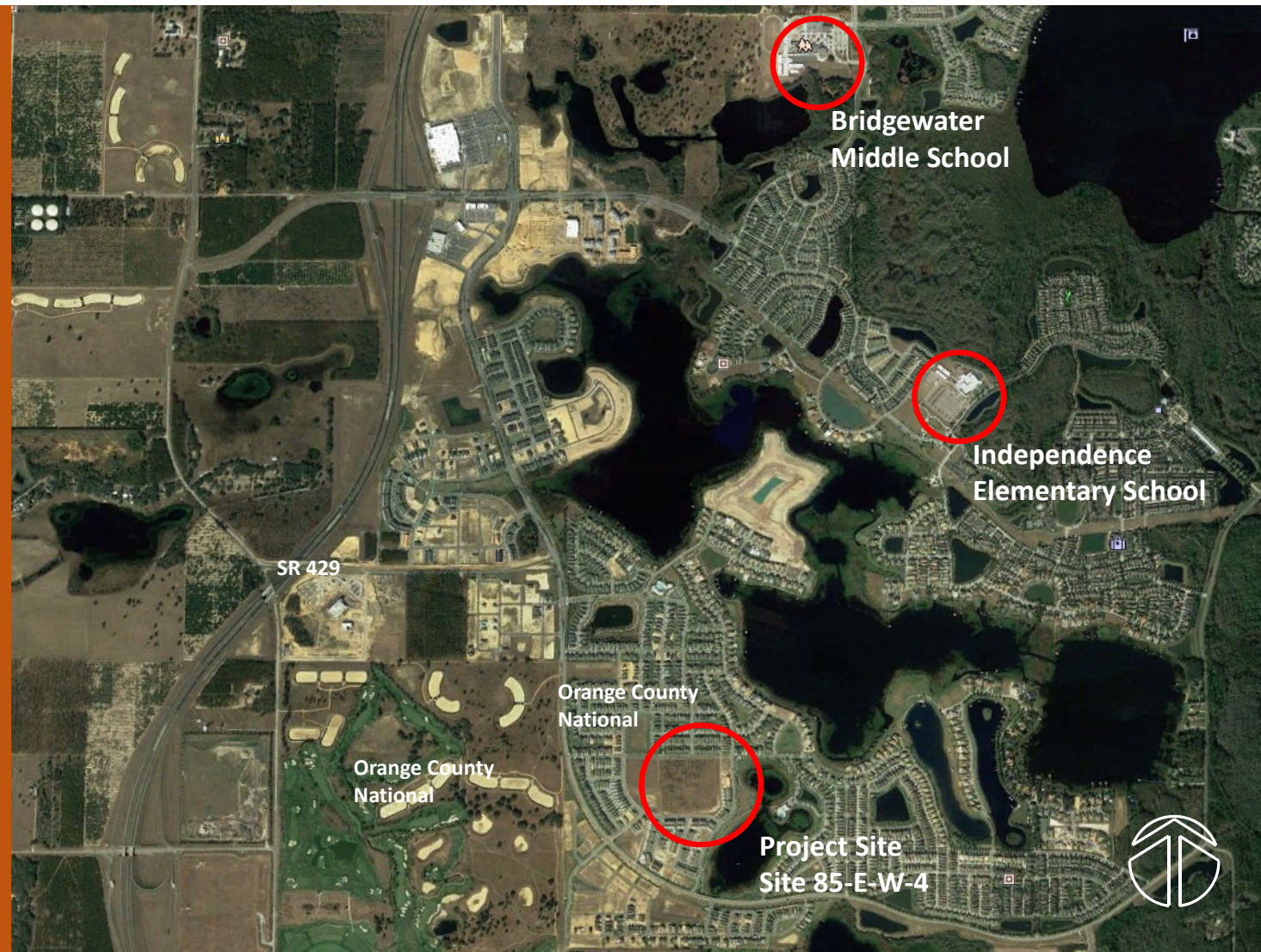
Planned Facility:

NEW Campus on vacant site to Meet District Standards for Elementary Schools:

- Prototypical Core Spaces

Enhanced Learning Environment:

- Latest Technology
- Planned Site Circulation
- Safety
- Community Asset



Aerial Map

Planned Facility:

NEW Campus on vacant site to
Meet District Standards for
Elementary Schools:

- Prototypical Core Spaces

Enhanced Learning Environment:

- Latest Technology
- Planned Site Circulation
- Safety
- Community Asset



Vicinity Map

Planned Facility:

NEW Campus on vacant site to
Meet District Standards for
Elementary Schools:

- Prototypical Core Spaces

Enhanced Learning Environment:

- Latest Technology
- Planned Site Circulation
- Safety
- Community Asset



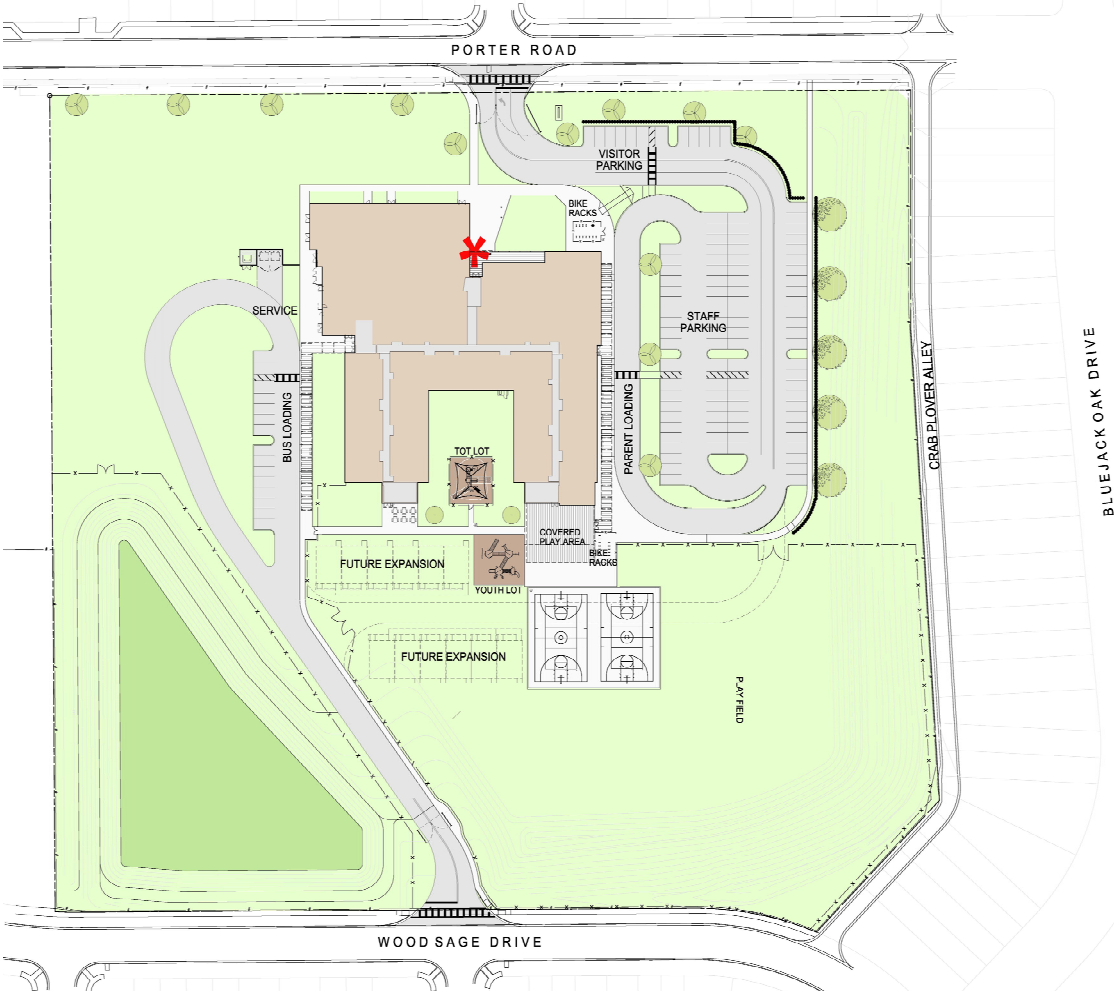
Vicinity Map



Planned Facility:

Site

- 14.8 Acres
- Topography
- Separate Bus and Parent Drives
- Queuing for 130 Cars
- Shared Bus and Parent Loading
- 110 Parking Spaces
- Future Park Planned Adjacent to Site





Example - Classroom

Planned Facility:

☑ Technology : Campus

The technology package will include:

- Student and teacher computers
- Interactive Flat Panel
- White boards
- Skills labs (Computer & Science)
- Wireless Access
- Audio Enhancement



Example - Technology

Planned Facility:

☑ Media Center

The Media Center will include:

- Genius bar
- Library tables for an entire class
- Story-telling area
- CCTV studio
- Audio Enhancement



Example – Media Center

Planned Facility:

☒ Cafeteria

The Cafeteria will include:

- Kitchen
- Two Serving Lines
- Teacher Dining
- Elevated Stage
- Extended Day Office
- Restrooms



Example – Multi-Purpose Room

Planned Facility:

☑ Specialty Classrooms

- Art Classroom with kiln
- Science Classroom
- Music Classroom



Example – Music Room

Planned Facility:

☑ Administration

The administrative area includes:

- Single point of entry during school hours
- Lobby
- Administrative offices, workroom & storage
- Large conference room
- Clinic
- Teacher planning



Example – Administration / Lobby

Planned Facility:

☒ Physical Education

Physical Education will include:

- PE Office and storage
- Covered play canopy
- Basketball Courts
- Tot lot play structure
- Youth lot play structure
- Playfields



Example – Play Equipment

Planned Facility:

☒ Site Circulation

- On-site car stacking
- On-site parking
- Bus loop
- Covered walkways
- Safe pedestrian paths
- Bike racks



Example – Main Entry

Site 85-E-W-4 ES Relief



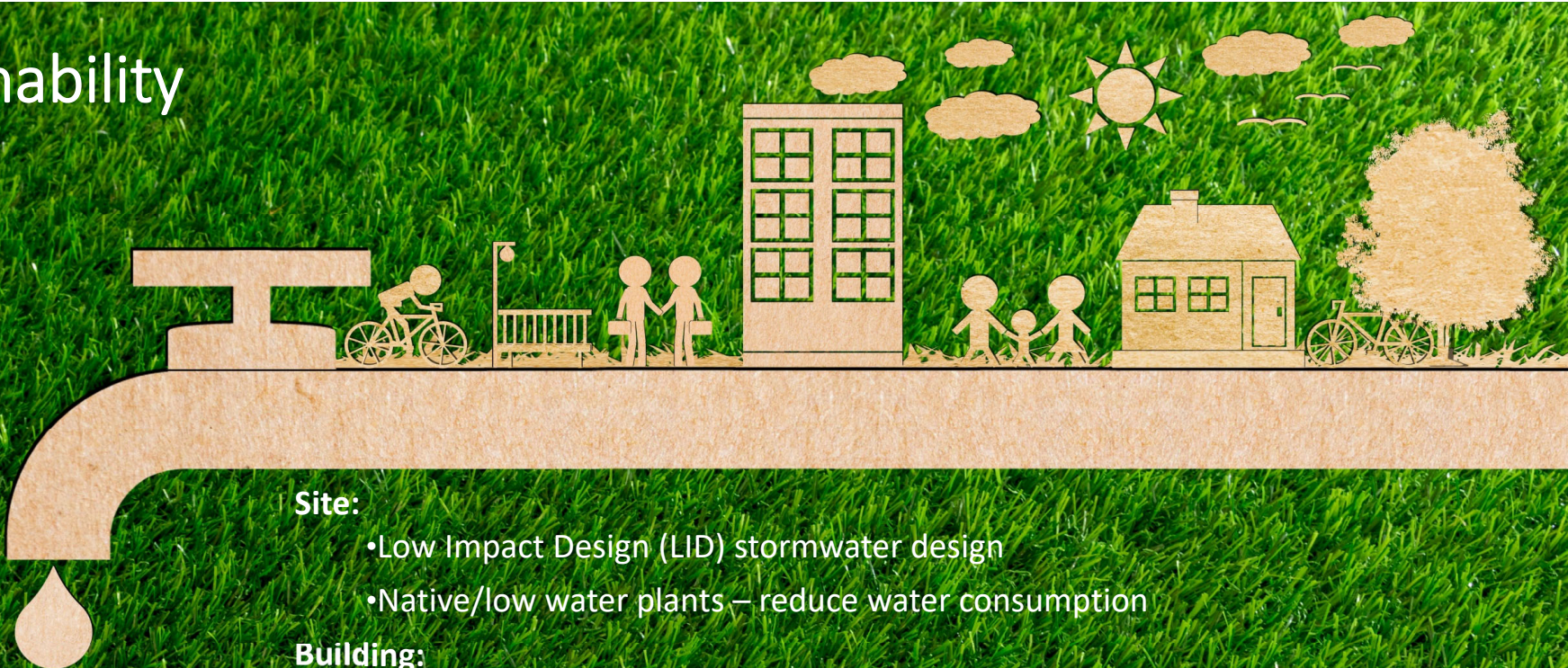
Perspective

Site 85-E-W-4 ES Relief



Perspective

Sustainability



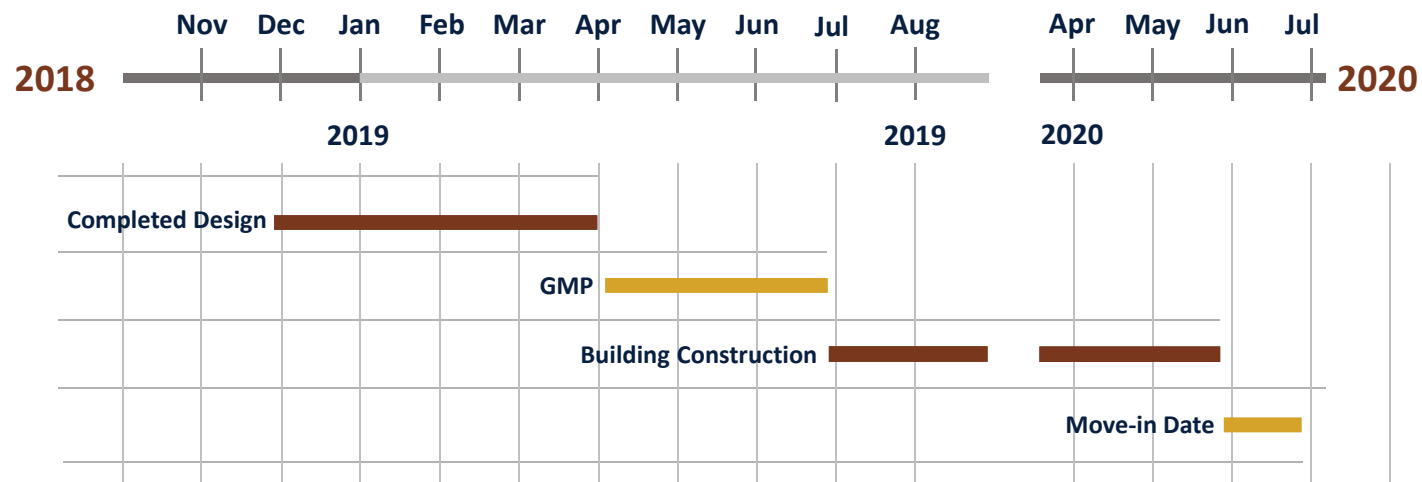
Site:

- Low Impact Design (LID) stormwater design
- Native/low water plants – reduce water consumption

Building:

- 10% more energy efficient than ASHRAE 90.1 standard
- High Efficiency Chillers (8% energy reduction)
- Light colored roof to reduce heat gain and improves energy performance
- Energy Star rated equipment
- Water saving toilets, faucets, and fixtures
- All general classrooms have daylighting
- Over 75% of ALL spaces have daylighting
- Thermal efficient windows/glazing
- Fully automated building controls system 10% more energy

Design & Construction Schedule





Questions & Answers