

January 23, 2019

Planning Community Meeting

High School Site 113-H-W-4

Please sign in on your mobile device: <http://communitymeeting.ocps.net/>



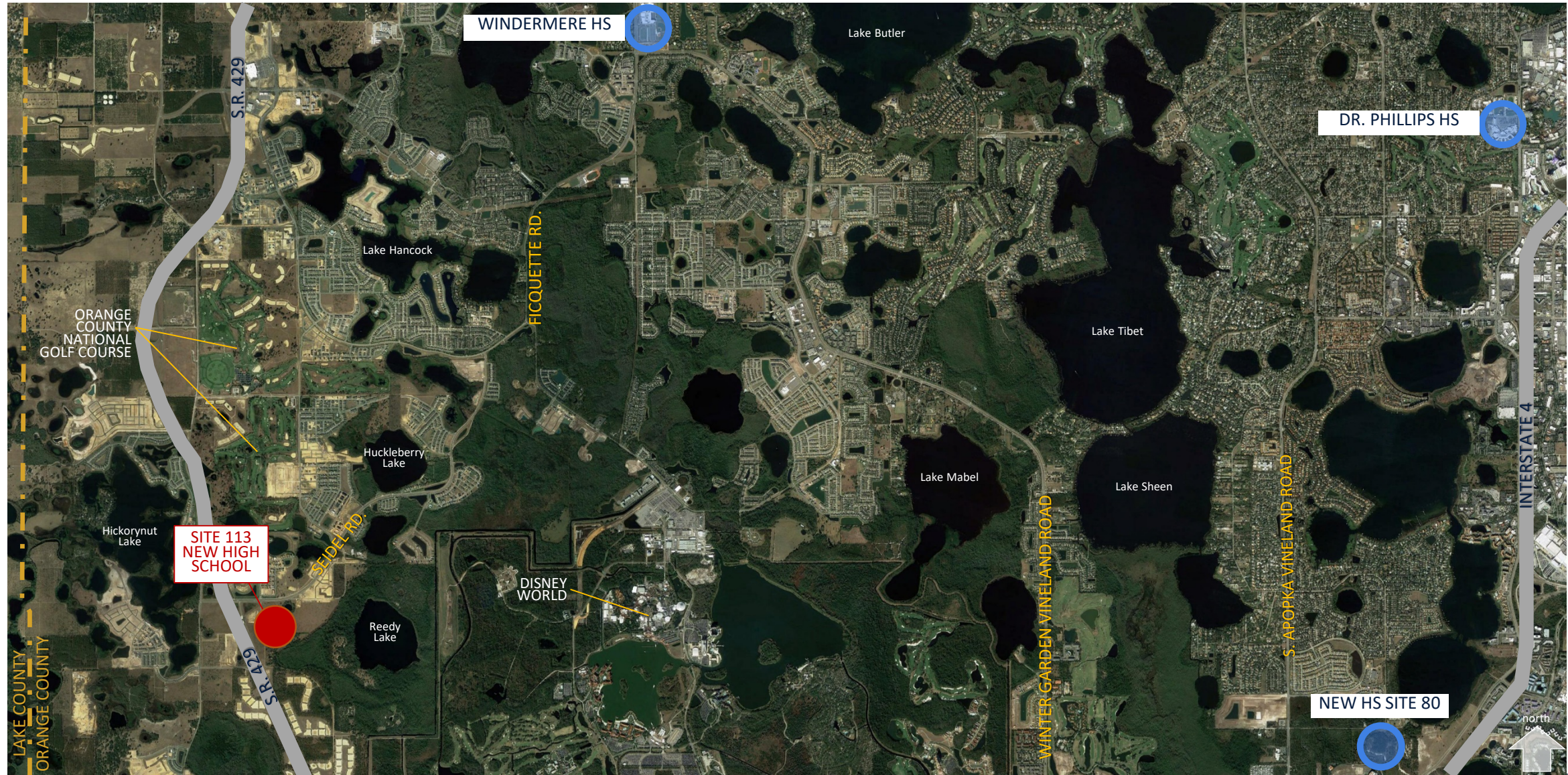
**Orange County
Public Schools**

High School Site 113-H-W-4 Meeting Agenda

January 23, 2019 6:00 PM

- Welcome – School Board Member: Pam Gould
- Introductions – Jessma Lambert: Construction Planning
- Project Update – **SCHENKEL**SHULTZ
□ □ □ ARCHITECTURE □ □ □
- Questions and Answers
- Adjournment

Site Location



Site Aerial



Project Basis – OCPS Prototype High School

OCPS PROTOTYPE HIGH SCHOOLS

Windermere High School
Oak Ridge High School
Evans High School
Apopka High School
West Orange High School
Wekiva High School
Ocoee High School
Lake Nona High School
East River High School
Freedom High School
Timber Creek High School
Olympia High School

SCHENKELSHULTZ
□ □ □ ARCHITECTURE □ □ □

Windermere High School



Evans High School



Oak Ridge High School



Wekiva High School

Building Program

Student Capacity: 2,776

Buildings: +/-350,000 Square Feet

Campus Program

Administration

Media Center

Cafeteria

Classroom Buildings

- Classrooms
- Science Labs
- Computer Labs
- CTE Labs

Auditorium & Music Spaces

- Band
- Vocal
- Orchestra
- Piano Lab

Gymnasium

- Locker Rooms
- Weight Room
- Gymnastics/Dance
- Wrestling



Building Program

Student Capacity: 2,776

Buildings: +/-350,000 Square Feet

Campus Program

Administration

Media Center

Cafeteria

Classroom Buildings

- Classrooms
- Science Labs
- Computer Labs
- CTE Labs

Auditorium & Music Spaces

- Band
- Vocal
- Orchestra
- Piano Lab

Gymnasium

- Locker Rooms
- Weight Room
- Gymnastics/Dance
- Wrestling



COMPUTER LAB



SCIENCE LAB

Building Program

Student Capacity: 2,776

Buildings: +/-350,000 Square Feet

Campus Program

Administration

Media Center

Cafeteria

Classroom Buildings

- Classrooms
- Science Labs
- Computer Labs
- CTE Labs

Auditorium & Music Spaces

- Band
- Vocal
- Orchestra
- Piano Lab

Gymnasium

- Locker Rooms
- Weight Room
- Gymnastics/Dance
- Wrestling



AUDITORIUM



GYMNASIUM

Site Program

Site: +/-68 Acres

Site Amenities

Greenhouse and Shade house
Athletics

- Field House at Stadium/Track
 - Locker Rooms
 - Weight Room
 - Concessions
- Practice Fields
- Baseball Field
- Softball Field
- Baseball & Softball Concessions
- Tennis Courts
- Outdoor Basketball Courts

Cars and Buses

Student and Faculty parking
(+/-850 Spaces)

Parent Drop off / pick up

Bus Loop (up to 60 buses)

Bus parking (up to 75 buses)



Site Program

Site: +/-68 Acres

Site Amenities

Greenhouse and Shade house
Athletics

- Field House at Stadium/Track
 - Locker Rooms
 - Weight Room
 - Concessions
- Practice Fields
- Baseball Field
- Softball Field
- Baseball & Softball Concessions
- Tennis Courts
- Outdoor Basketball Courts

Cars and Buses

Student and Faculty parking
(+/-850 Spaces)

Parent Drop off / pick up

Bus Loop (up to 60 buses)

Bus Parking (up to 75 buses)



Site Program

Site: +/-68 Acres

Site Amenities

Greenhouse and Shade house

Athletics

- Field House at Stadium/Track
 - Locker Rooms
 - Weight Room
 - Concessions
- Practice Fields
- Baseball Field
- Softball Field
- Baseball & Softball Concessions
- Tennis Courts
- Outdoor Basketball Courts

Cars and Buses

Student and Faculty parking
(+/-850 Spaces)

Parent Drop off / pick up

Bus Loop (up to 60 buses)

Bus Parking (up to 75 buses)



Additional Features

Safety & Security

- Secure Courtyard Design
- Single Secure Entry Point
- Security System & Cameras
- Card Reader Entrance Controls
- Fencing

Educational Technology

- 70" Touch Screen "Smart" Monitors
- Audio Enhancement
- WiFi Connectivity



Sustainability

Building

- 10% more energy efficient than ASHRAE 90.1 standard
- High Efficiency Chillers (15% energy reduction)
- Light colored roof to reduce heat gain and improves energy performance
- Energy Efficient LED Lighting
- Energy Star rated equipment
- Water saving toilets, faucets, and fixtures
- All classrooms have daylighting
- Over 75% of ALL spaces have daylighting
- Thermal efficient windows/glazing

Site

- Native/low water plants – reduce water consumption
- Low Impact Design (LID) stormwater design



Planned Schedule





Questions & Answers