

August 19, 2019

# **100% Design /Construction Kick Off Community Meeting**

## **High School Site 113-H-W-4**

Please sign in on your mobile device: <https://communitymeeting.ocps.net/>



**Orange County  
Public Schools**

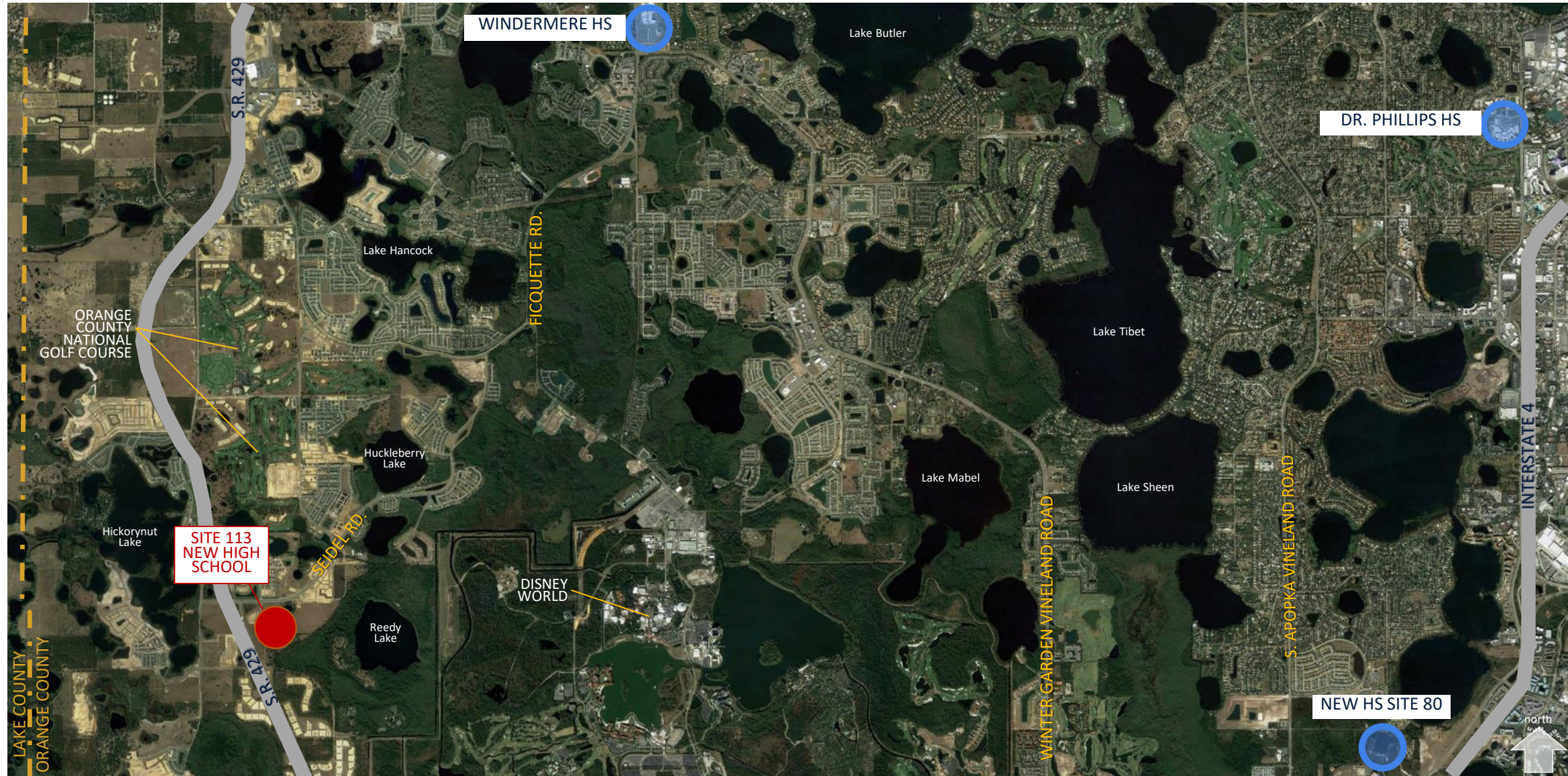
# High School Site 113-H-W-4

## 100% Design /Construction Kick off Meeting Agenda

August 19, 2019 6:00 PM

- Welcome – School Board Member: Pam Gould
- Introductions – Jessma Lambert: Facilities Director,  
Construction Planning
- Project Update – Lynn Lefebvre, AIA **SCHENKELSHULTZ**  
□□□ ARCHITECTURE □□□  
– Patrick Rauch, AIA **SCHENKELSHULTZ**  
□□□ ARCHITECTURE □□□  
– Tom Widener- Wharton- Smith
- Questions and Answers
- Adjournment

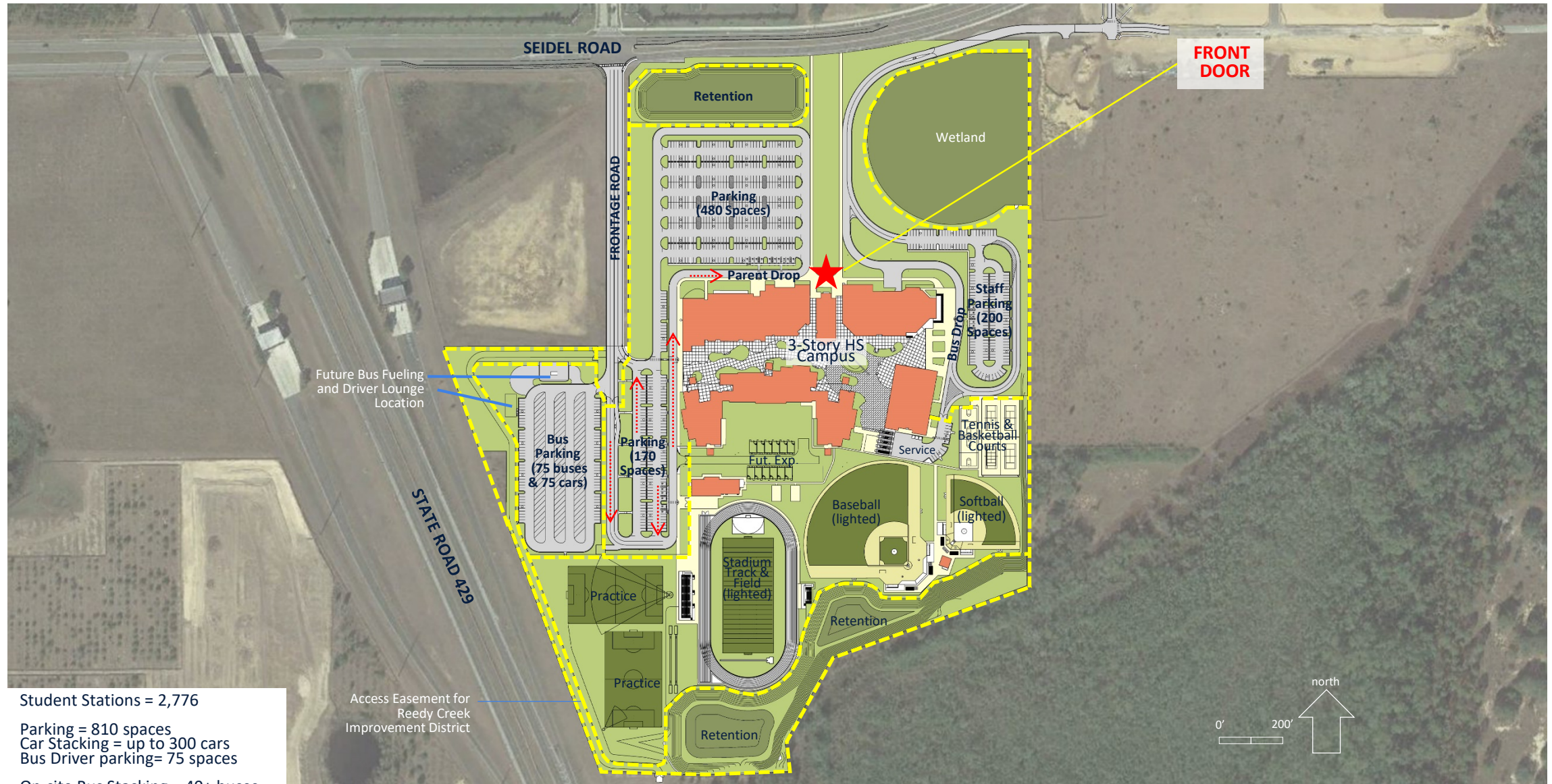
# Site Location 113-H-W-4



# Site Aerial 113- H-W-4



# Site Plan 113-H-W 4



Student Stations = 2,776

Parking = 810 spaces  
Car Stacking = up to 300 cars  
Bus Driver parking = 75 spaces

On-site Bus Stacking = 40+ buses

# Project Basis – OCPS Prototype High School 113-H-W-4

## OCPS PROTOTYPE HIGH SCHOOLS

Windermere High School

Oak Ridge High School

Evans High School

Apopka High School

West Orange High School

Wekiva High School

Ocoee High School

Lake Nona High School

East River High School

Freedom High School

Timber Creek High School

Olympia High School



Oak Ridge High School

# Project Basis – OCPS Prototype High School 113-H-W-4

## UPGRADES INCLUDED PROTOTYPE

### Educational

- 21<sup>st</sup> Century Collaborative Learning Hubs

### Technology

- Interactive Touchscreen Smart TV's
- WiFi access points throughout

### Energy Efficiency

- LED lighting campus wide (interior, exterior, site and athletic fields)
- High efficiency chillers and variable pumping scheme
- Low flow plumbing fixtures
- Commissioning of MEP systems
- ASHRAE 90.1 compliance for lighting and power metering

### Security

- Full security access control and cameras for the school
- 2-way emergency radio system
- Voice evacuation fire alarm system
- Permanent generator and life safety lighting



Windermere High School

# Renderings 113-W-H-4



# Renderings 113-H-W-4



# Renderings 113-H-W-4



# Renderings 113-H-W-4



# Building Program

**113-H-W-4**

Student Capacity: 2,776

Buildings: 344,000 Square Feet

## Campus Program

Administration

Media Center

Cafeteria

Classroom Buildings

- Classrooms
- Science Labs
- Computer Labs
- CTE Labs

Auditorium & Music Spaces

- Band
- Vocal
- Orchestra
- Piano Lab

Gymnasium

- Locker Rooms
- Weight Room
- Gymnastics/Dance
- Wrestling



MEDIA CENTER



CAFETERIA

# Building Program

**113-H-W-4**

Student Capacity: 2,776

Buildings: 340,000 Square Feet

## Campus Program

Administration

Media Center

Cafeteria

Classroom Buildings

- Classrooms
- Science Labs
- Computer Labs
- CTE Labs

Auditorium & Music Spaces

- Band
- Vocal
- Orchestra
- Piano Lab

Gymnasium

- Locker Rooms
- Weight Room
- Gymnastics/Dance
- Wrestling



# Building Program

**113-H-W-4**

Student Capacity: 2,776

Buildings: 340,000 Square Feet

## Campus Program

Administration

Media Center

Cafeteria

Classroom Buildings

- Classrooms
- Science Labs
- Computer Labs
- CTE Labs

Auditorium & Music Spaces

- Band
- Vocal
- Orchestra
- Piano Lab

Gymnasium

- Locker Rooms
- Weight Room
- Gymnastics/Dance
- Wrestling



AUDITORIUM



GYMNASIUM

# Site Program

**113-H-W-4**

Site: +/-68 Acres

## Site Amenities

Greenhouse and Shade house  
Athletics

- Field House at Stadium/Track
  - Locker Rooms
  - Weight Room
  - Concessions
- Practice Fields
- Baseball Field
- Softball Field
- Baseball & Softball Concessions
- Tennis Courts
- Outdoor Basketball Courts

## Cars and Buses

Student and Faculty parking  
(+/-850 Spaces)

Parent Drop off / pick up

Bus Loop (up to 60 buses)

Bus parking (up to 75 buses)



# Site Program

**113-H-W-4**

Site: +/-68 Acres

## Site Amenities

Greenhouse and Shade house  
Athletics

- Field House at Stadium/Track
  - Locker Rooms
  - Weight Room
  - Concessions
- Practice Fields
- Baseball Field
- Softball Field
- Baseball & Softball Concessions
- Tennis Courts
- Outdoor Basketball Courts

## Cars and Buses

Student and Faculty parking  
(+/-810 Spaces)

Parent Drop off / pick up

Bus Loop (up to 60 buses)

Bus Parking (up to 75 buses)



# Site Program

**113-H-W-4**

Site: +/-68 Acres

## Site Amenities

Greenhouse and Shade house  
Athletics

- Field House at Stadium/Track
  - Locker Rooms
  - Weight Room
  - Concessions
- Practice Fields
- Baseball Field
- Softball Field
- Baseball & Softball Concessions
- Tennis Courts
- Outdoor Basketball Courts

## Cars and Buses

Student and Faculty parking  
(+/-850 Spaces)

Parent Drop off / pick up

Bus Loop (up to 50 buses)

Bus Driver parking = 75 spaces

Bus Parking (up to 75 buses)



# Additional Features 113-H-W-4

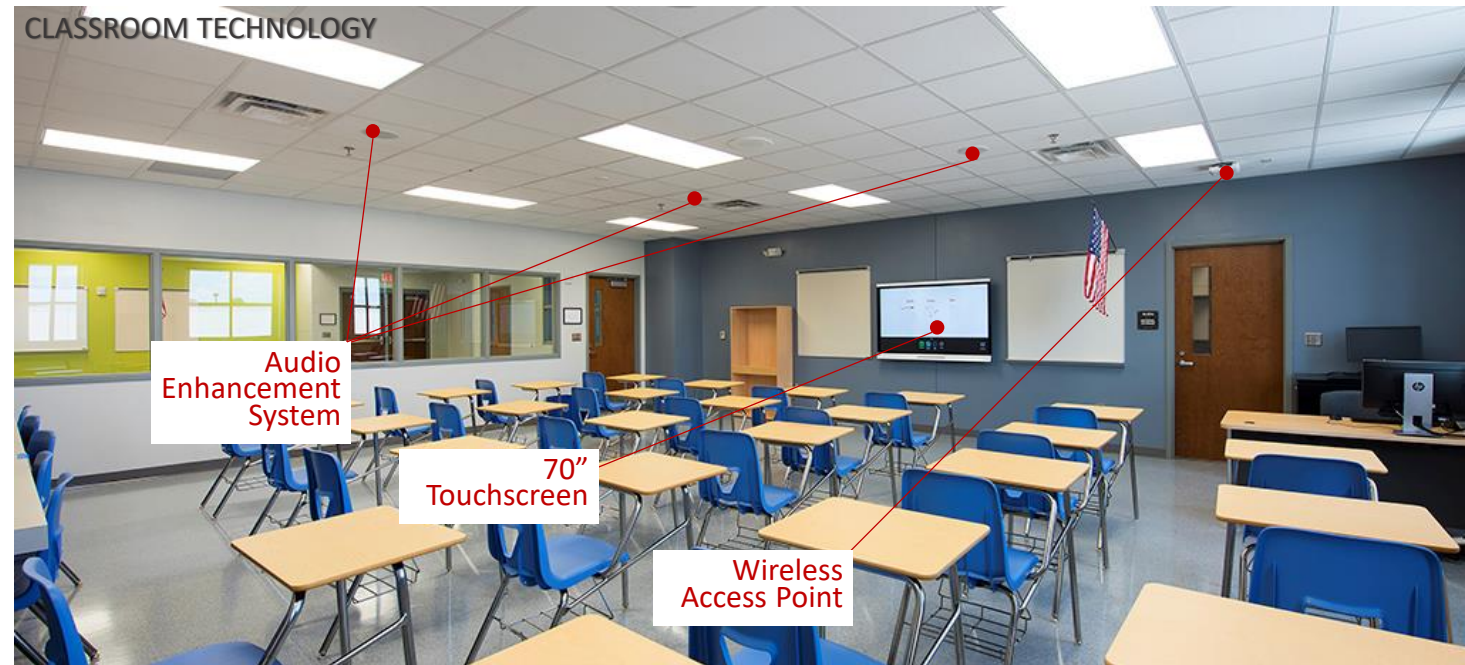
## Safety & Security

- Secure Courtyard Design
- Single Secure Entry Point
- Security System & Cameras
- Card Reader Entrance Controls



## Educational Technology

- 70" Touch Screen "Smart" Monitors
- Audio Enhancement
- WiFi Connectivity



# Sustainability 113-H-W-4

## Sustainable Design Criteria



## Building

- 10% more energy efficient than ASHRAE 90.1 standard
- High Efficiency Chillers (15% energy reduction)
- Light colored roof to reduce heat gain and improves energy performance
- Energy Efficient LED Lighting
- Energy Star rated equipment
- Water saving toilets, faucets, and fixtures
- All classrooms have daylighting
- Over 75% of ALL spaces have daylighting
- Thermal efficient windows/glazing

## Site

- Native/low water plants – reduce water consumption
- Low Impact Design (LID) stormwater design

# What to Expect

113-H-W-4

## Work Hours\*

Monday – Friday 6:00am – 6:00pm

\* Early morning concrete pours will be necessary and will be in strict accordance with the Orange County noise ordinance

## Deliveries

Monday – Friday 6:00am – 6:00pm

All construction deliveries to enter the jobsite from Frontage Rd.

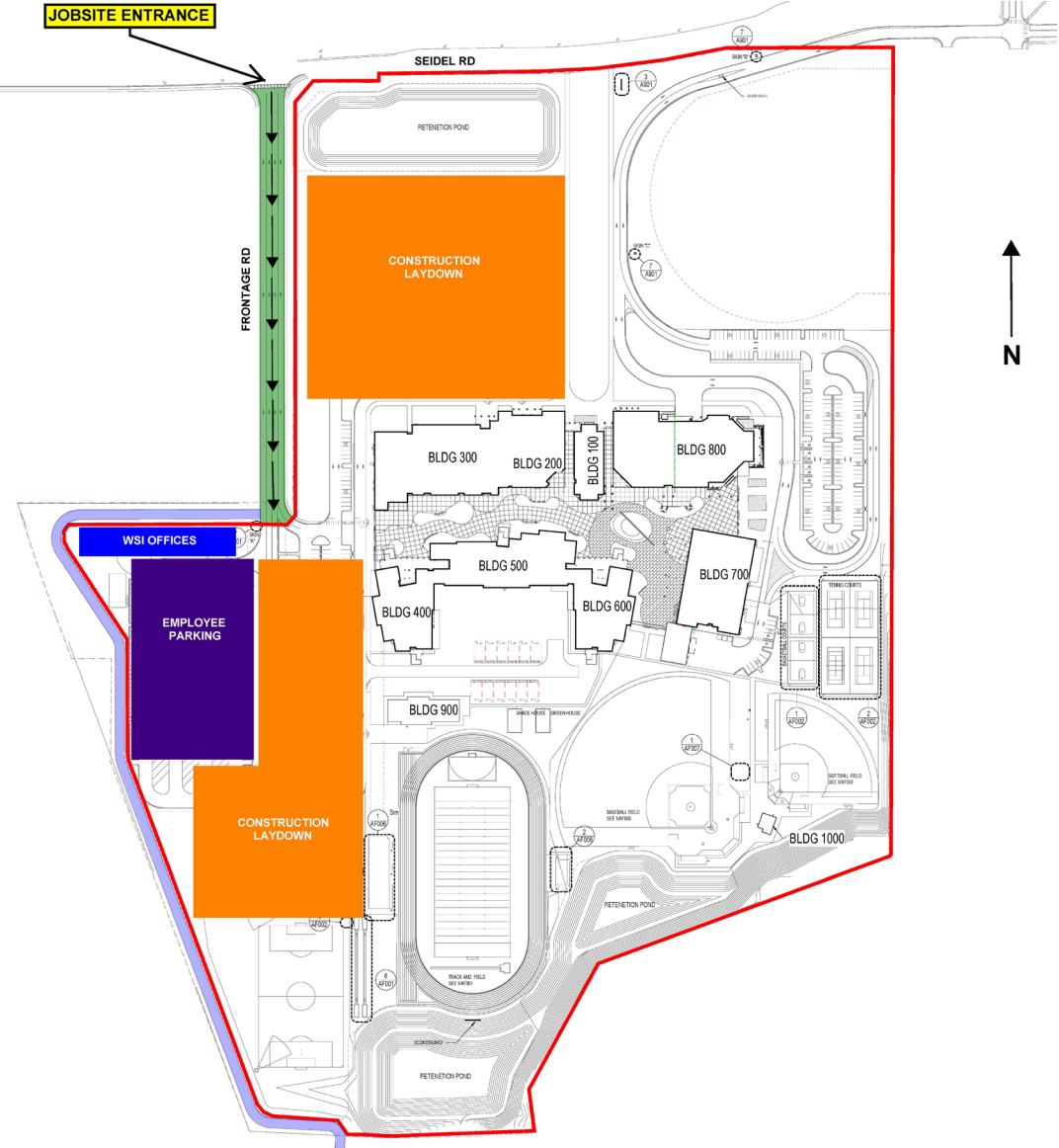
## Road Closures

Frontage Rd. will be closed except to construction related traffic and for access to the adjacent solar field.

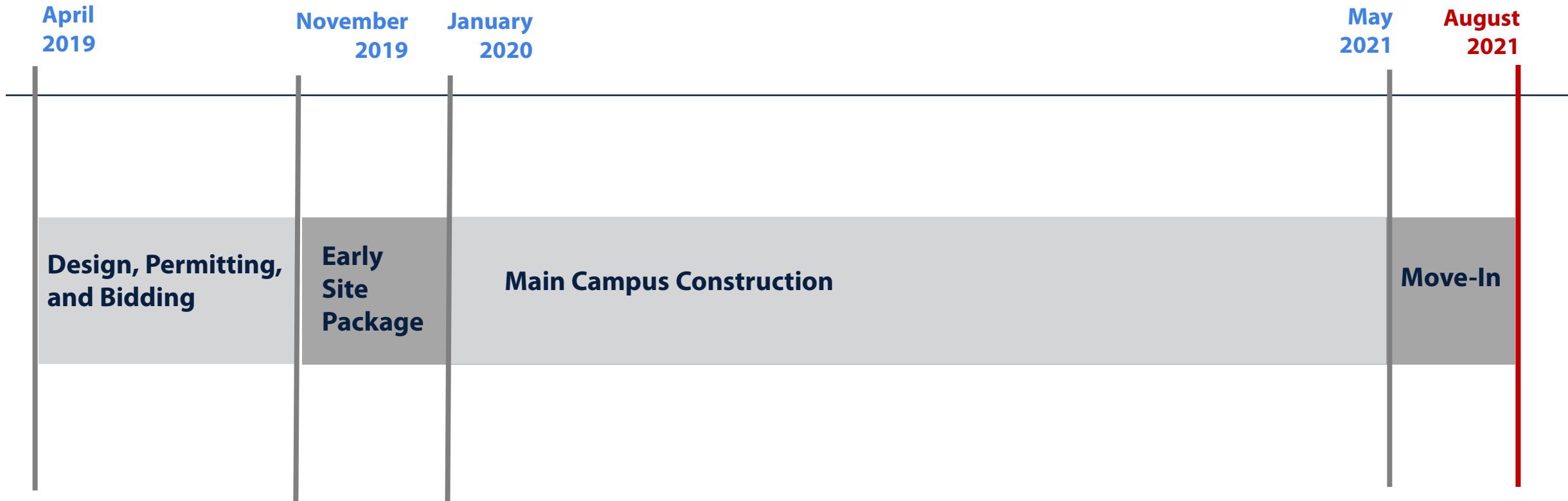
Limited single lane closure will be required along Seidel Rd. at times throughout the project to complete work located immediately adjacent to traffic lanes.

# Site Logistic Plan

## 113-H-W-4



# Planned Schedule 113-H-W-4





# Questions & Answers