

April 29, 2019

60% Design Community Meeting

High School Site 113-H-W-4

Please sign in on your mobile device: <https://communitymeeting.ocps.net/>



**Orange County
Public Schools**

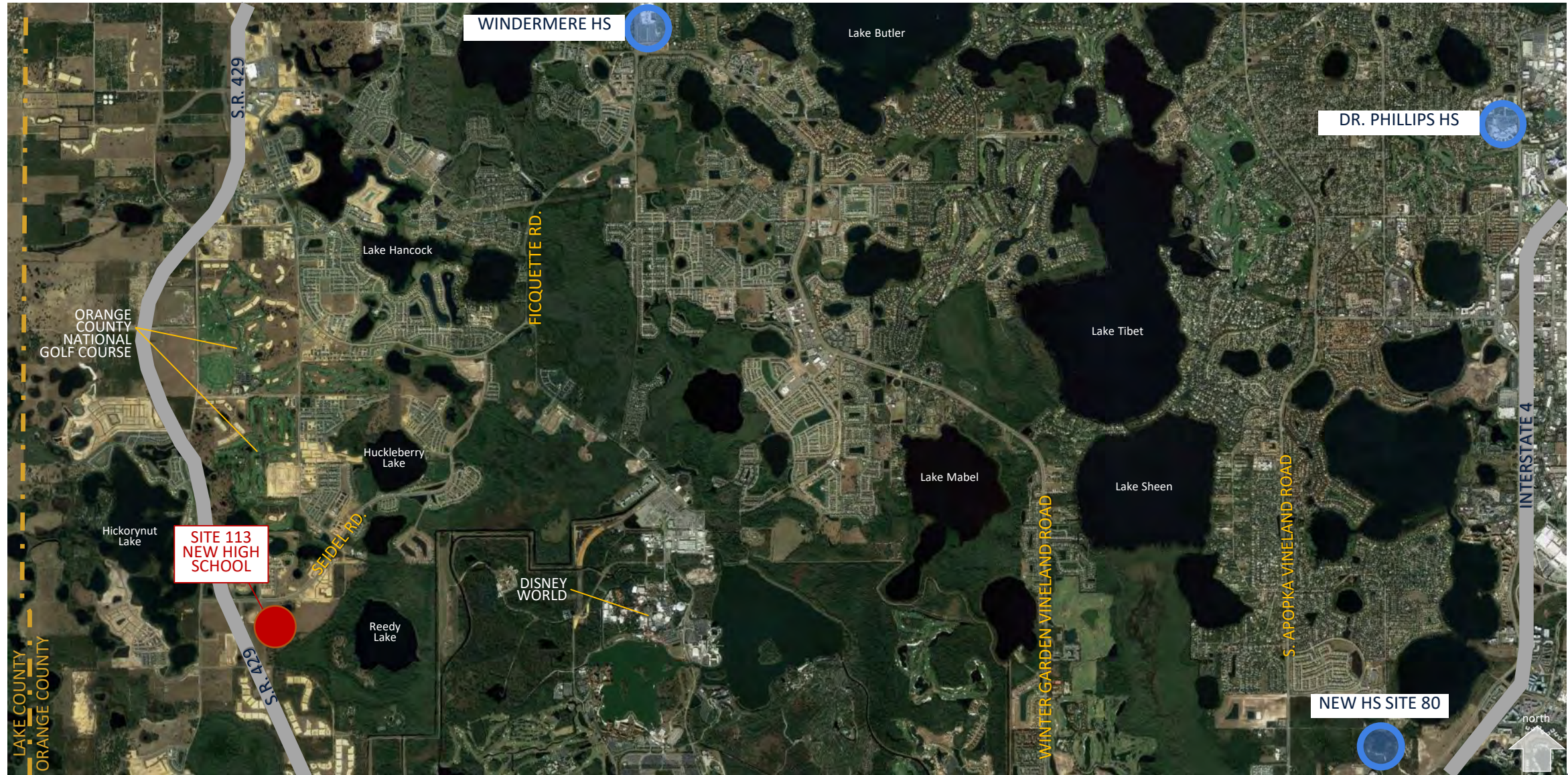
High School Site 113-H-W-4 60% Design Meeting Agenda

April 29, 2019 6:00 PM

- Welcome – School Board Member: Pam Gould
- Introductions – Jessma Lambert: Facilities Director,
Construction Planning
- Project Update – David Torbert, AIA, NCARB
- Questions and Answers
- Adjournment

SCHENKELSHULTZ
ARCHITECTURE

Site Location



Site Aerial



Site Plan



Project Basis – OCPS Prototype High School

OCPS PROTOTYPE HIGH SCHOOLS

Windermere High School
Oak Ridge High School
Evans High School
Apopka High School
West Orange High School
Wekiva High School
Ocoee High School
Lake Nona High School
East River High School
Freedom High School
Timber Creek High School
Olympia High School



Evans High School

Project Basis – OCPS Prototype High School

UPGRADES INCLUDED PROTOTYPE

Educational

- 21st Century Collaborative Learning Hubs

Technology

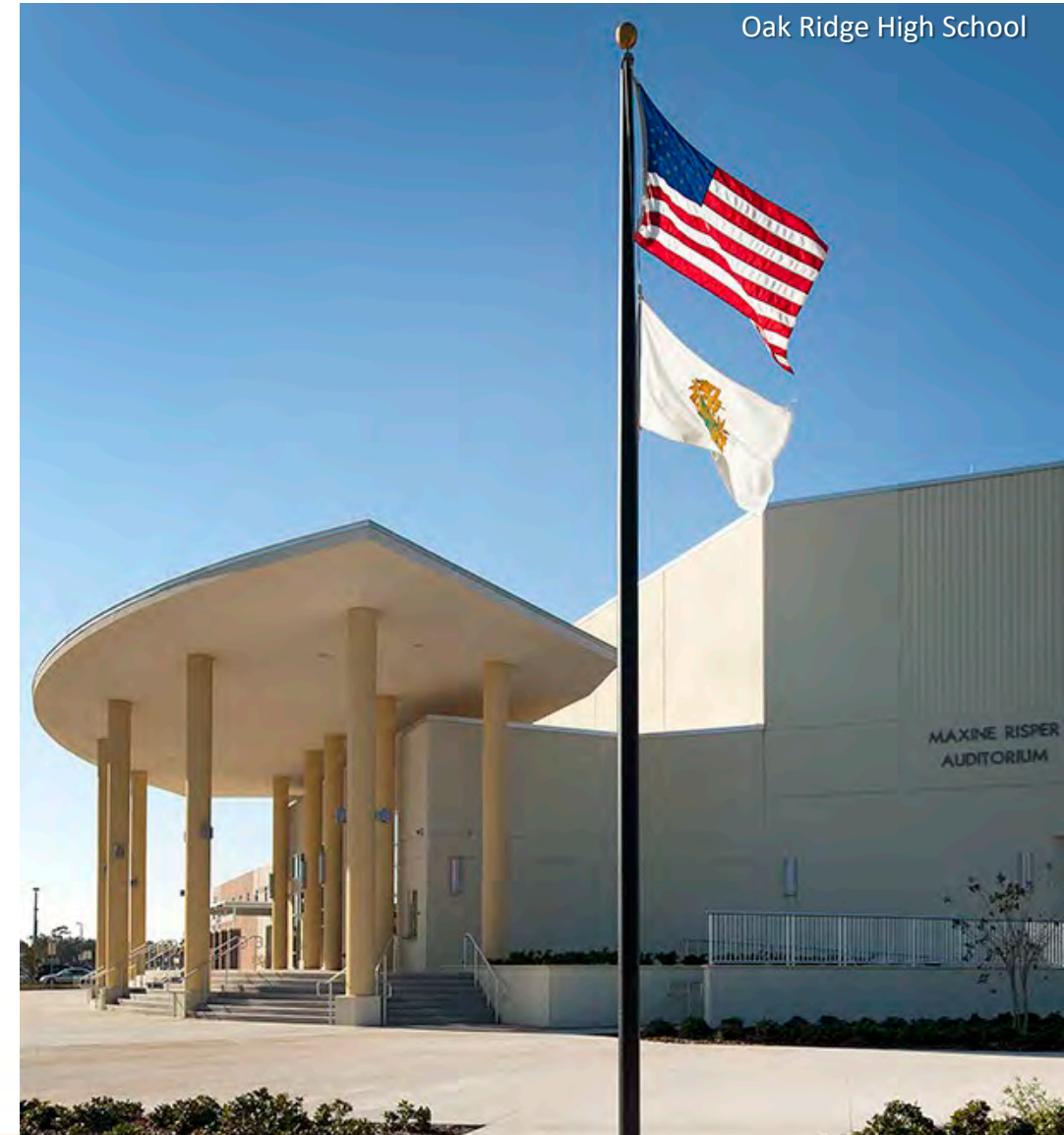
- Interactive Touchscreen Smart TV's
- WiFi access points throughout

Energy Efficiency

- LED lighting campus wide (interior, exterior, site and athletic fields)
- High efficiency chillers and variable pumping scheme
- Low flow plumbing fixtures
- Commissioning of MEP systems
- ASHRAE 90.1 compliance for lighting and power metering

Security

- Full security access control and cameras for the school
- 2-way emergency radio system
- Voice evacuation fire alarm system
- Permanent generator and life safety lighting



Building Program

Student Capacity: 2,776

Buildings: +/-350,000 Square Feet

Campus Program

Administration

Media Center

Cafeteria

Classroom Buildings

- Classrooms
- Science Labs
- Computer Labs
- CTE Labs

Auditorium & Music Spaces

- Band
- Vocal
- Orchestra
- Piano Lab

Gymnasium

- Locker Rooms
- Weight Room
- Gymnastics/Dance
- Wrestling



Building Program

Student Capacity: 2,776

Buildings: +/-350,000 Square Feet

Campus Program

Administration

Media Center

Cafeteria

Classroom Buildings

- Classrooms
- Science Labs
- Computer Labs
- CTE Labs

Auditorium & Music Spaces

- Band
- Vocal
- Orchestra
- Piano Lab

Gymnasium

- Locker Rooms
- Weight Room
- Gymnastics/Dance
- Wrestling



Building Program

Student Capacity: 2,776

Buildings: +/-350,000 Square Feet

Campus Program

Administration

Media Center

Cafeteria

Classroom Buildings

- Classrooms
- Science Labs
- Computer Labs
- CTE Labs

Auditorium & Music Spaces

- Band
- Vocal
- Orchestra
- Piano Lab

Gymnasium

- Locker Rooms
- Weight Room
- Gymnastics/Dance
- Wrestling



AUDITORIUM



GYMNASIUM

Site Program

Site: +/-68 Acres

Site Amenities

Greenhouse and Shade house
Athletics

- Field House at Stadium/Track
 - Locker Rooms
 - Weight Room
 - Concessions
- Practice Fields
- Baseball Field
- Softball Field
- Baseball & Softball Concessions
- Tennis Courts
- Outdoor Basketball Courts

Cars and Buses

Student and Faculty parking
(+/-850 Spaces)

Parent Drop off / pick up

Bus Loop (up to 60 buses)

Bus parking (up to 75 buses)



GREENHOUSE



STADIUM/TRACK & FIELD

Site Program

Site: +/-68 Acres

Site Amenities

Greenhouse and Shade house
Athletics

- Field House at Stadium/Track
 - Locker Rooms
 - Weight Room
 - Concessions
- Practice Fields
- Baseball Field
- Softball Field
- Baseball & Softball Concessions
- Tennis Courts
- Outdoor Basketball Courts

Cars and Buses

Student and Faculty parking
(+/-850 Spaces)

Parent Drop off / pick up

Bus Loop (up to 60 buses)

Bus Parking (up to 75 buses)



Site Program

Site: +/-68 Acres

Site Amenities

Greenhouse and Shade house
Athletics

- Field House at Stadium/Track
 - Locker Rooms
 - Weight Room
 - Concessions
- Practice Fields
- Baseball Field
- Softball Field
- Baseball & Softball Concessions
- Tennis Courts
- Outdoor Basketball Courts

Cars and Buses

Student and Faculty parking
(+/-850 Spaces)

Parent Drop off / pick up

Bus Loop (up to 60 buses)

Bus Parking (up to 75 buses)



Additional Features

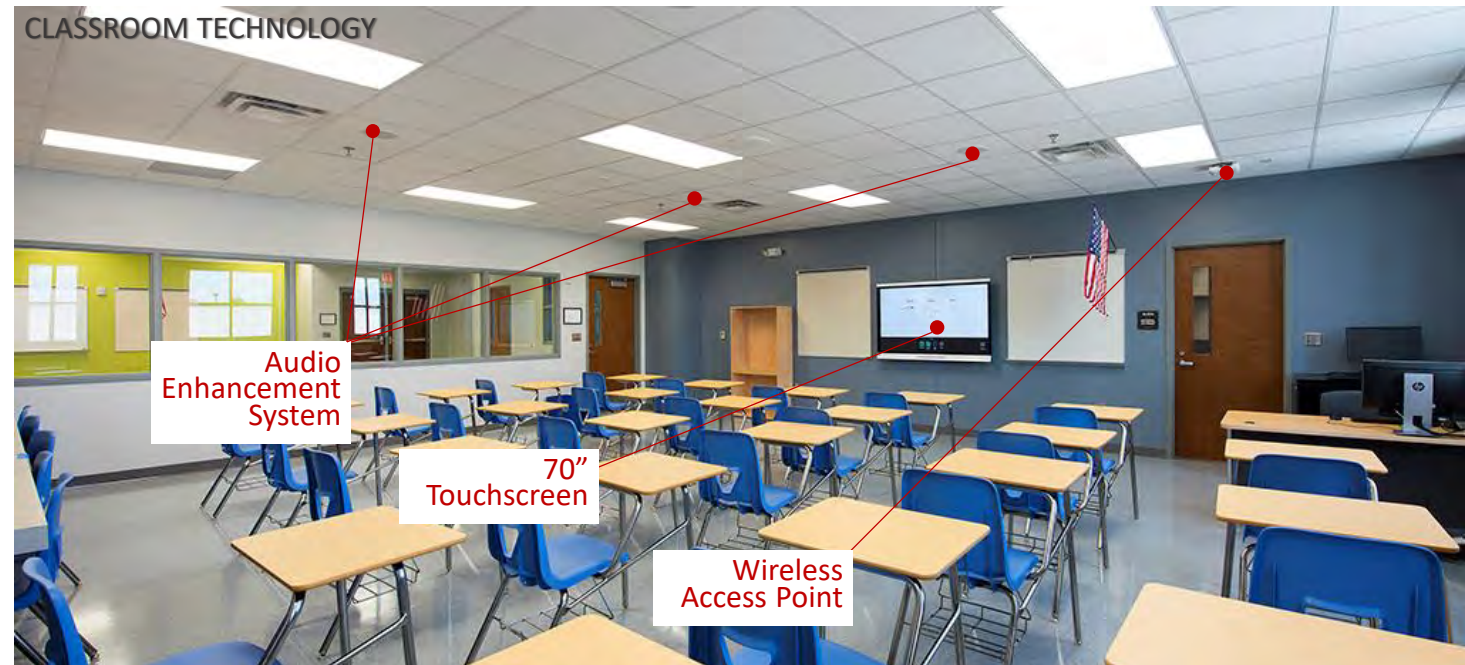
Safety & Security

- Secure Courtyard Design
- Single Secure Entry Point
- Security System & Cameras
- Card Reader Entrance Controls



Educational Technology

- 70" Touch Screen "Smart" Monitors
- Audio Enhancement
- WiFi Connectivity



Sustainability

Building

- 10% more energy efficient than ASHRAE 90.1 standard
- High Efficiency Chillers (15% energy reduction)
- Light colored roof to reduce heat gain and improves energy performance
- Energy Efficient LED Lighting
- Energy Star rated equipment
- Water saving toilets, faucets, and fixtures
- All classrooms have daylighting
- Over 75% of ALL spaces have daylighting
- Thermal efficient windows/glazing

Site

- Native/low water plants – reduce water consumption
- Low Impact Design (LID) stormwater design



Planned Schedule





Questions & Answers