

February 20, 2020

6:00PM

# 40% Construction Community Meeting

## Site 20-E-SW-4

Please sign in on your mobile device: <https://communitymeeting.ocps.net/>



**Orange County  
Public Schools**

# Site 20-E-SW-4

## Meeting Agenda

6:00pm, February 20, 2020; Waterbridge Elementary School Cafeteria

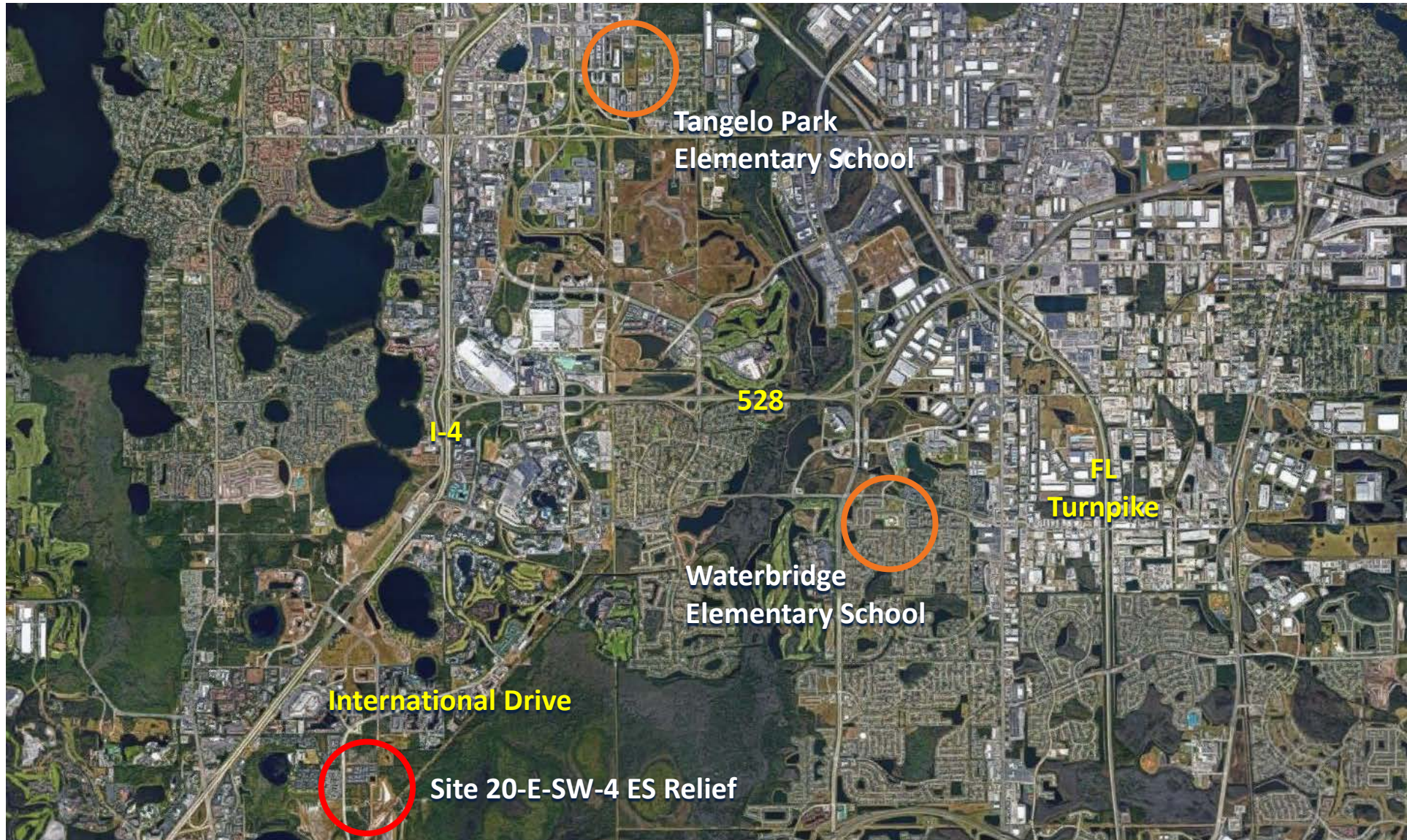
- Welcome - Pam Gould, District 4 School Board Vice Chair
- Introductions – Jessma Lambert, Facilities Director, Construction Planning

- Project Update – Construction Manager:  **CORE**  
Architect:  rhodes + brito  
ARCHITECTS

- School Naming Update: Laura Suprenard, Principal
- Questions and Answers
- Adjournment



# Site 20-E-SW-4





# Site 20-E-SW-4





# Site 20-E-SW-4

## Planned Facility:

NEW Campus on vacant site to meet District Standards for Elementary Schools:

- Prototypical Core Spaces

## Enhanced Learning Environment:

- Latest Technology
- Planned Site Circulation
- Safety
- Community Asset



# Site 20-E-SW-4

## LEGEND

- PEDESTRIAN ACCESS
- SHARED PEDESTRIAN / BICYCLE ACCESS

## SITE DATA

SITE AREA = ± 19.97 ACRES

PARKING = AS REQUIRED

QUEUING:

Required:

167 cars at 3,240LF

20% Of 837 Student Stations

BUSES = 15





# Site 20-E-SW-4



Example - Classroom

Site 20-E-SW-4



# Site 20-E-SW-4

## Planned Facility:

☑ Technology :

Campus

The technology package will include:

- Student and teacher computers
- Interactive Flat Panel
- White boards
- Skills labs (Computer & Science)
- Wireless Access
- Audio Enhancement





# Site 20-E-SW-4

## Planned Facility:

☒ Media Center

The Media Center will include:

- Genius bar
- Library tables for an entire class
- Story-telling area
- CCTV studio
- Audio enhancement





# Site 20-E-SW-4

## Planned Facility:

☒ Cafeteria

The Cafeteria will include:

- Kitchen
- Two serving lines
- Teacher dining
- Elevated stage
- Extended day office
- Restrooms





# Site 20-E-SW-4

## Planned Facility:

- ☑ Specialty

## Classrooms:

- Art classroom with kiln
- Science classroom
- Music classroom





# Site 20-E-SW-4

## Planned Facility:

- ☑ Administration

The administrative area will include:

- Single point of entry during school hours
- Lobby
- Administrative offices, workroom & storage
- Large conference room
- Clinic
- Teacher planning areas





# Site 20-E-SW-4

## Planned Facility:

☒ Physical

Physical Education will include:

- PE office and storage
- Covered play canopy
- Basketball courts
- Tot lot play structure
- Youth lot play structure
- Playfields





# Site 20-E-SW-4

## Planned Facility:

- ☑ Site Circulation

Site Circulation will include:

- On-site car stacking
- On-site parking
- Bus loop
- Covered walkways
- Safe pedestrian paths
- Bike racks





# Sustainability

## Sustainable Features

### Site:

- Low Impact Design (LID) stormwater design
- Native/low water plants – reduce water consumption

### Building:

- 10% more energy efficient than ASHRAE 90.1 standard
- High efficiency chillers (8% energy reduction)
- Light colored roof to reduce heat gain and improves energy performance
- ENERGY STAR rated equipment
- Water saving toilets, faucets and fixtures
- All general classrooms have daylighting
- Over 75% of ALL spaces have daylighting
- Thermal efficient windows/glazing
- Fully automated building controls system 10% more energy





# Site 20-E-SW-4





# Site 20-E-SW-4





# Site 20-E-SW-4

## Aerial Site Photos | Development Progress





# Site 20-E-SW-4

## Aerial Site Photos | Development Progress





# Site 20-E-SW-4

## Aerial Site Photos | Development Progress





# Site 20-E-SW-4

## Aerial Site Photos | Development Progress





# Site 20-E-SW-4

## Aerial Site Photos | Development Progress





# Site 20-E-SW-4

## Aerial Site Photos | Development Progress





# Site 20-E-SW-4

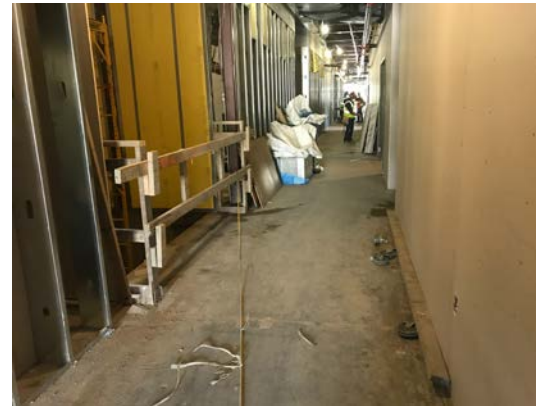
## Aerial Site Photos | Development Progress





# Site 20-E-SW-4

## Aerial Site Photos | Development Progress





# Site 20-E-SW-4

## Upcoming Milestones



- Building Dry-In by February 2020
- Permanent Power by March 2020
- Playfields Complete by April 2020
- HVAC Chiller Start-Up by March 2020
- Substantial Completion Date May 13, 2020
- Anticipated Move In Date Early June 2020



# Site 20-E-SW-4 | School Naming Process

Principal Laura Suprenard

The school naming process for Site 20-E-SW-4 has begun.

You may vote at this link:

<https://forms.gle/daprFBd7A8UJ5E8V8>



## Relief Site 20-E-SW-4 School Naming Survey

As we draw closer to the opening of our new school building, we want to engage our school community to select a name for our new elementary school! This is an exciting time for the area, and we look forward to working with you to name our school! Please note the school naming process below, and we invite you to become involved! If you have any questions, please do not hesitate to contact me.

Any student, parent/guardian, or community member is invited to submit a potential name for our new school.





# Questions & Answers