

Orange County Public Schools



Welcome! Please sign in on your mobile device:

<http://communitymeeting.ocps.net/>

WINNER

the broad prize
for urban education



Site 25-E-SW-4 Elementary School
60% Design Community Meeting
October 25, 2017

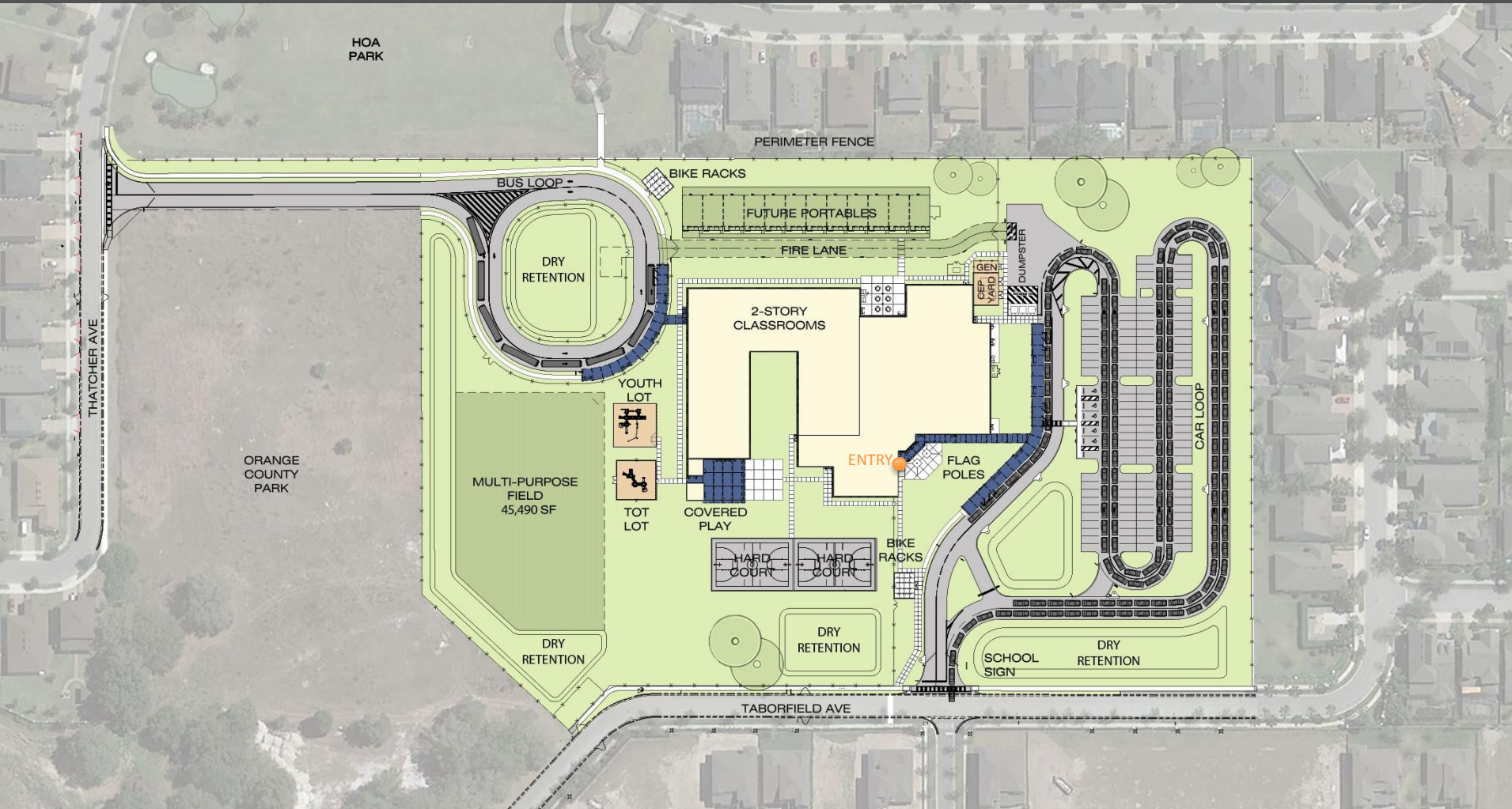
Site 25-E-SW-4 Elementary School Meeting Agenda

- Introductions – Principal
- Welcome – School Board Member – Pam Gould
- Introductions – Jessma Lambert
- Government Approvals Update – Julie Salvo
- Project Update – Architect: BRPH Architects/Engineers, Inc.
Contractor: Charles Perry Partners, Inc. (CPPI)
- Questions and Answers
- Adjournment

Required Orange County Approvals

- Modification to the Lake Reams Neighborhood PD to provide for additional access
- Access easement through County-owned park site
- Development Plan approval of school site





Student Capacity: 837

1st Floor: 63,161 SF

2nd Floor: 31,208 SF

Total: 94,369 SF

Covered Play: 2,236 SF

Total Queuing: 171 Cars

Percent Stacking: 20%

Total Parking: 124 Cars

Bus Queuing: 17+



BRPH

Site 25 Elementary is designed to meet Green Globes sustainable building standards

Sustainable Features Include:

Site

- Native/low water plants – reduce water consumption
- Low Impact Design (LID) stormwater design

Building

- 10% more energy efficient than ASHRAE 90.1 standard
- High Efficiency Chillers (8% energy reduction)
- Light colored roof to reduce heat gain and improves energy performance
- Energy Star rated equipment
- Water saving toilets, faucets, and fixtures
- Close to all of the general classrooms have daylighting
- Thermal efficient windows/glazing
- Fully automated building controls system

School	Year Open
Conway ES	2008
Wetherbee ES	2011
Rock Springs ES	2013
Spring Lake ES	2014
Ocoee ES	2014
Pineloch ES	2014
Lake Weston ES	2015
Tangelo Park ES	2016
Rock Lake ES	2017
Oak Hill ES	2017
Pine Hills ES (Under Construction)	2018
Frangus ES (Under Construction)	2018



Example Interactive Display



Science



Music



Skills Lab



Art

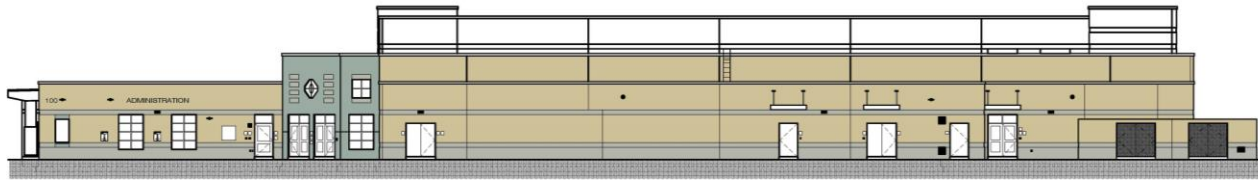








West

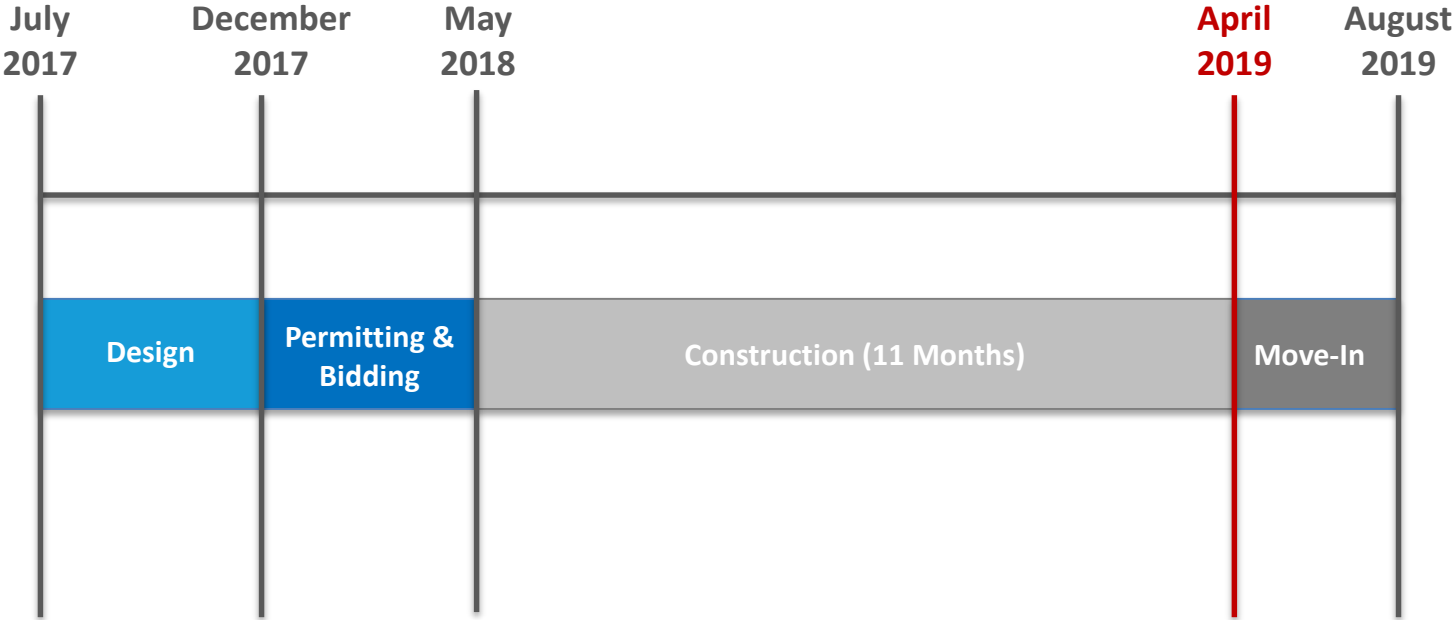


South



East





QUESTIONS?