

Orange County Public Schools



Welcome! Please sign in on your mobile
device:

<http://communitymeeting.ocps.net/>

WINNER

the broad prize
for urban education



100% Design Community Meeting
Site 37-M-SW-4
October 18, 2017

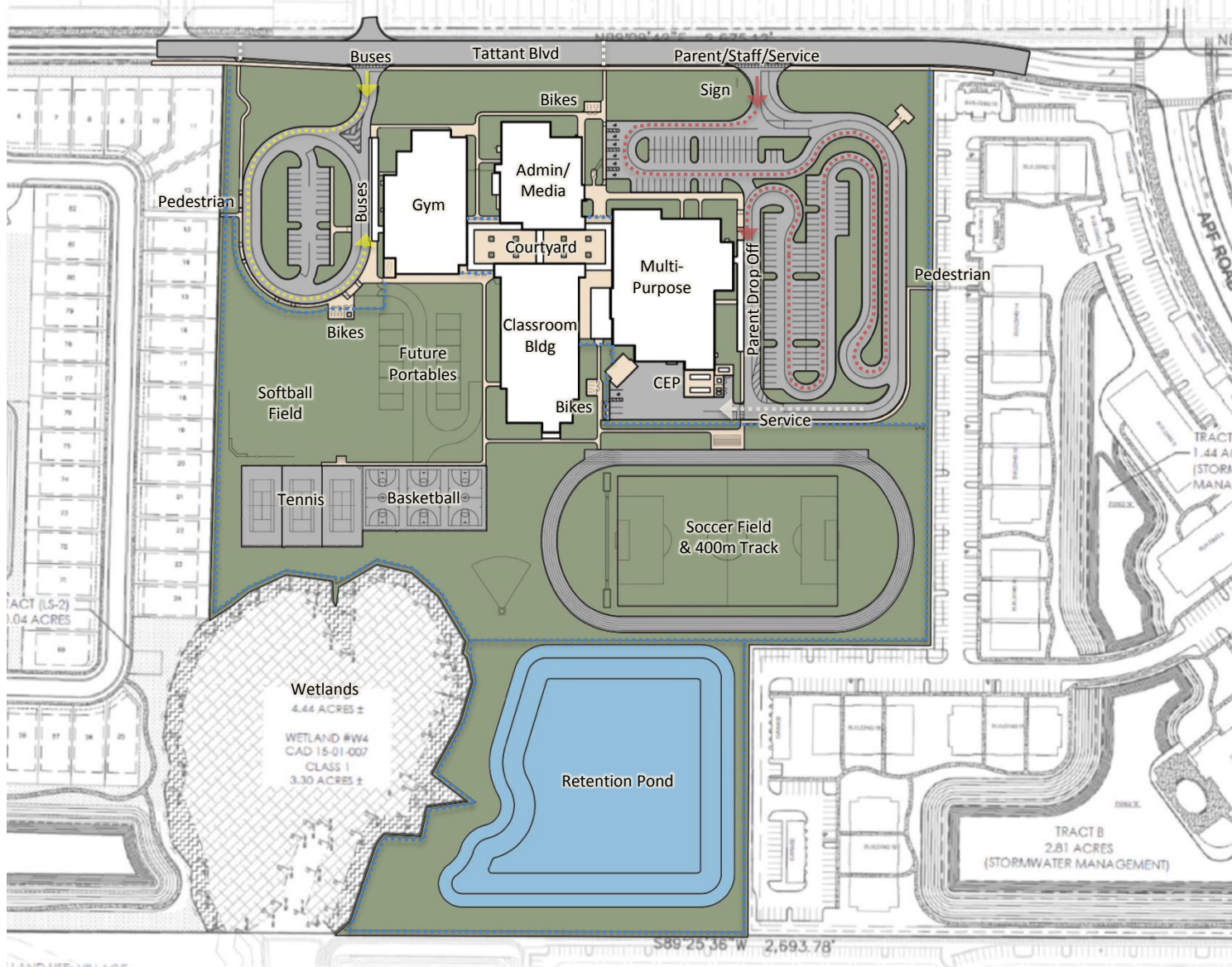
HARVARD • JOLLY
ARCHITECTURE

Site 37-M-SW-4 100% Design Meeting Agenda

October 18, 2017: Bridgewater Middle School Cafeteria, 6:00pm

- Welcome – Pamela Gould, School Board Member
- Introductions – Jessma Lambert, Facilities Meeting Facilitator
- Project Update – Architect: Harvard Jolly Architects
Construction Manager: Wharton-Smith, Inc.
- Questions and Answers
- Adjournment





Project Data

Capacity
1213 Students

Building Area
+/- 172,000 Gross SF

Parking
174 Spaces

Car Queuing
232 Cars

Bus Canopy
155 ft
30 Buses

Parent Canopy
167 ft

Portables
12 Portables

Site Area
+/- 25.56 Acres





































Site 37 Middle School is designed to meet Green Globes sustainable building standards

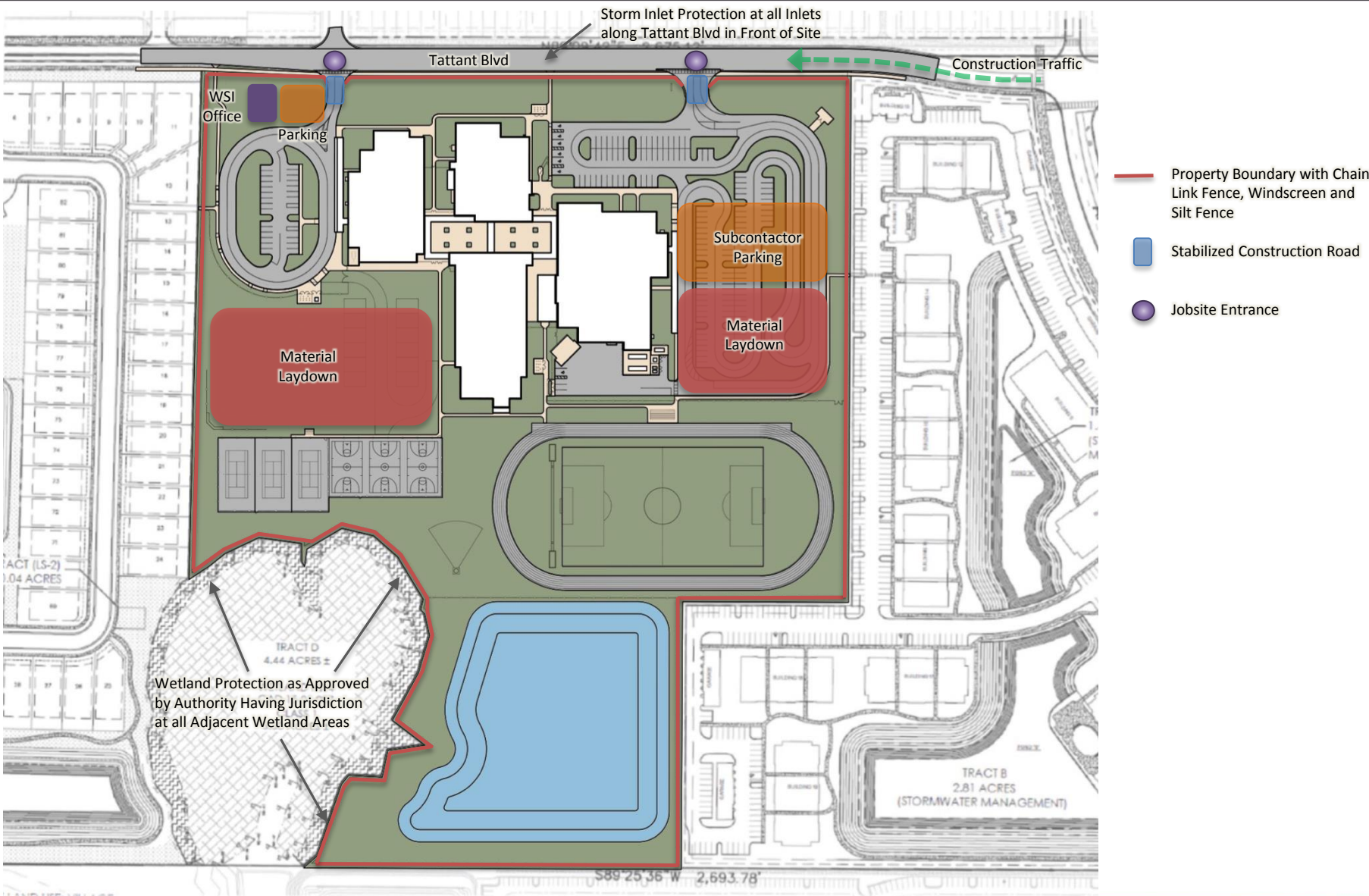
Sustainable Features include:

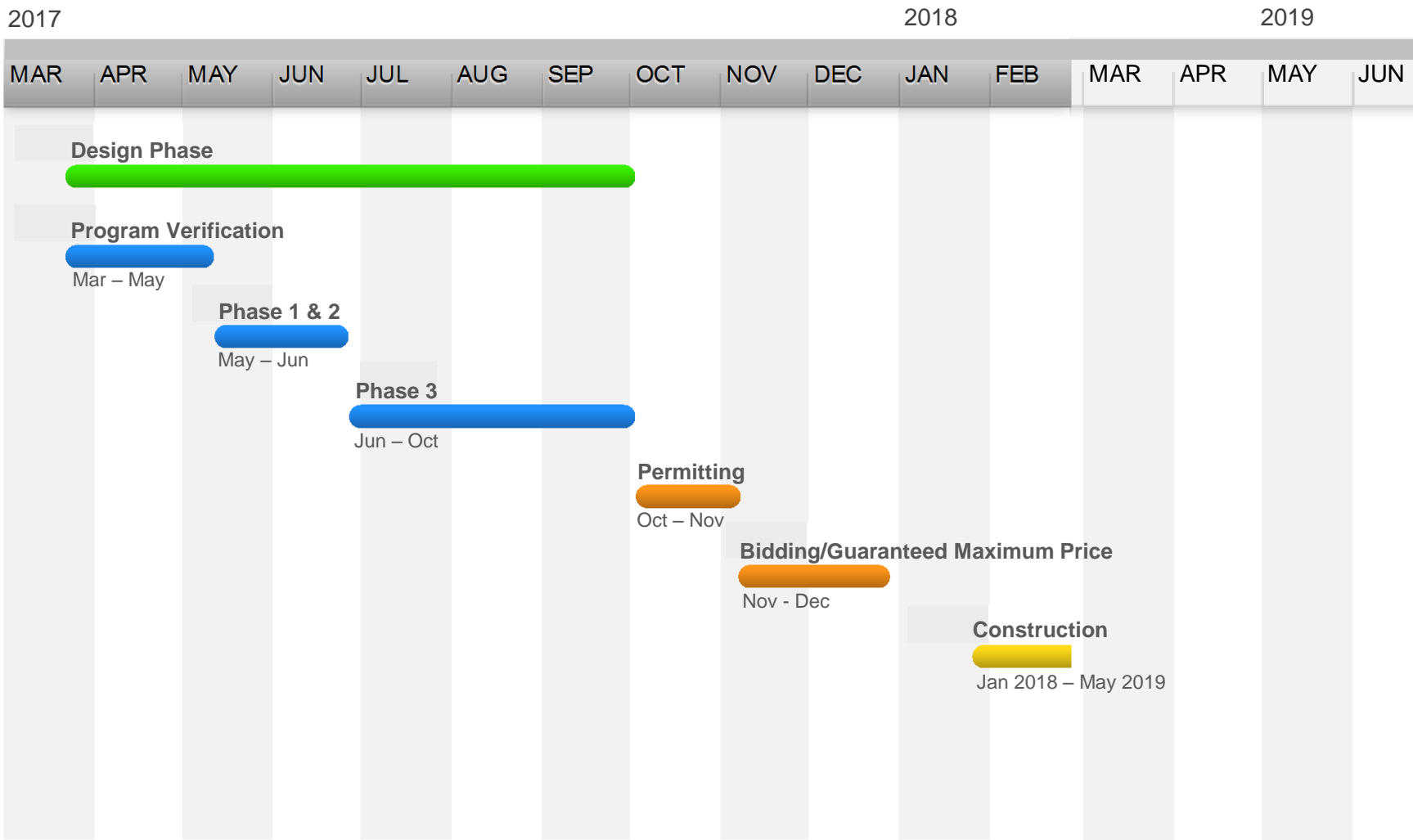
Site

- Native/low water landscaping – reduced water consumption
- Low Impact Design (LID) stormwater design

Building

- 10% more energy efficient than ASHRAE 90.1 standard
- High Efficiency Chillers (8% energy reduction)
- Light colored roof reduces heat gain and improves energy efficiency
- Energy Star rated equipment
- Water saving toilets, faucets and fixtures
- All general classrooms have daylighting
- Over 75% of ALL spaces have daylighting
- Thermal efficient windows/glazing
- Fully automated building control system





QUESTIONS?