

# Orange County Public Schools



Welcome! Please sign in on your mobile  
device:

<http://communitymeeting.ocps.net/>

## WINNER

the broad prize  
for urban education



30% Design Community Meeting  
Site 37-M-SW-4  
May 25, 2017

**HARVARD • JOLLY**  
ARCHITECTURE

## Site 37-M-SW-4 30% Design Meeting Agenda

May 25, 2017: Bridgewater Middle School Cafeteria, 6:00pm

- Welcome – Pamela Gould, School Board Member
- Introductions – Jessma Lambert, Facilities Meeting Organizer
- Project Update – Architect: Harvard Jolly Architects  
Construction Manager: Wharton-Smith, Inc
- Questions and Answers
- Adjournment



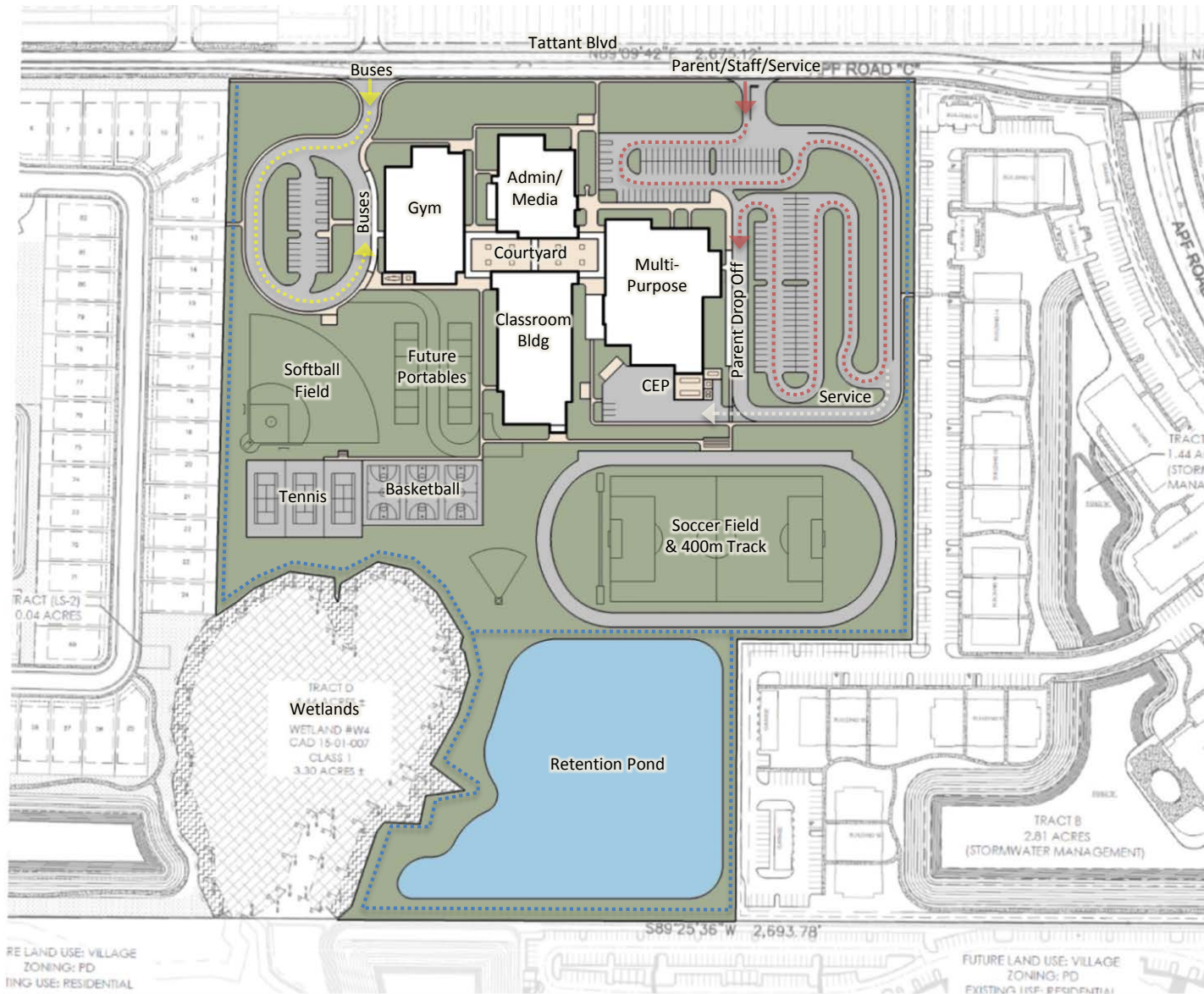
# Orange County Public Schools



Aerial of Existing Site – Vicinity Map



# Orange County Public Schools



## Project Data

**Capacity**  
1213 Student Stations

**Building Area**  
+/- 172,000 Gross SF

**Parking**  
180 Spaces  
110 Spaces Required\*

**Car Queuing**  
222 Cars (18.3%)  
139 Cars Required\*

**Bus Canopy**  
160 ft  
25 Buses  
17 Buses Required\*

**Parent Canopy**  
180 ft

**Portables**  
12 Portables

**Site Area**  
+/- 25.56 Acres

\*Per Traffic Study



# Orange County Public Schools



Example - Typical Classroom



# Orange County Public Schools



Example - Technology Resource Center



# Orange County Public Schools



Example – Media Center



# Orange County Public Schools



Example - Multi Purpose Room



# Orange County Public Schools



Example – Kitchen



# Orange County Public Schools



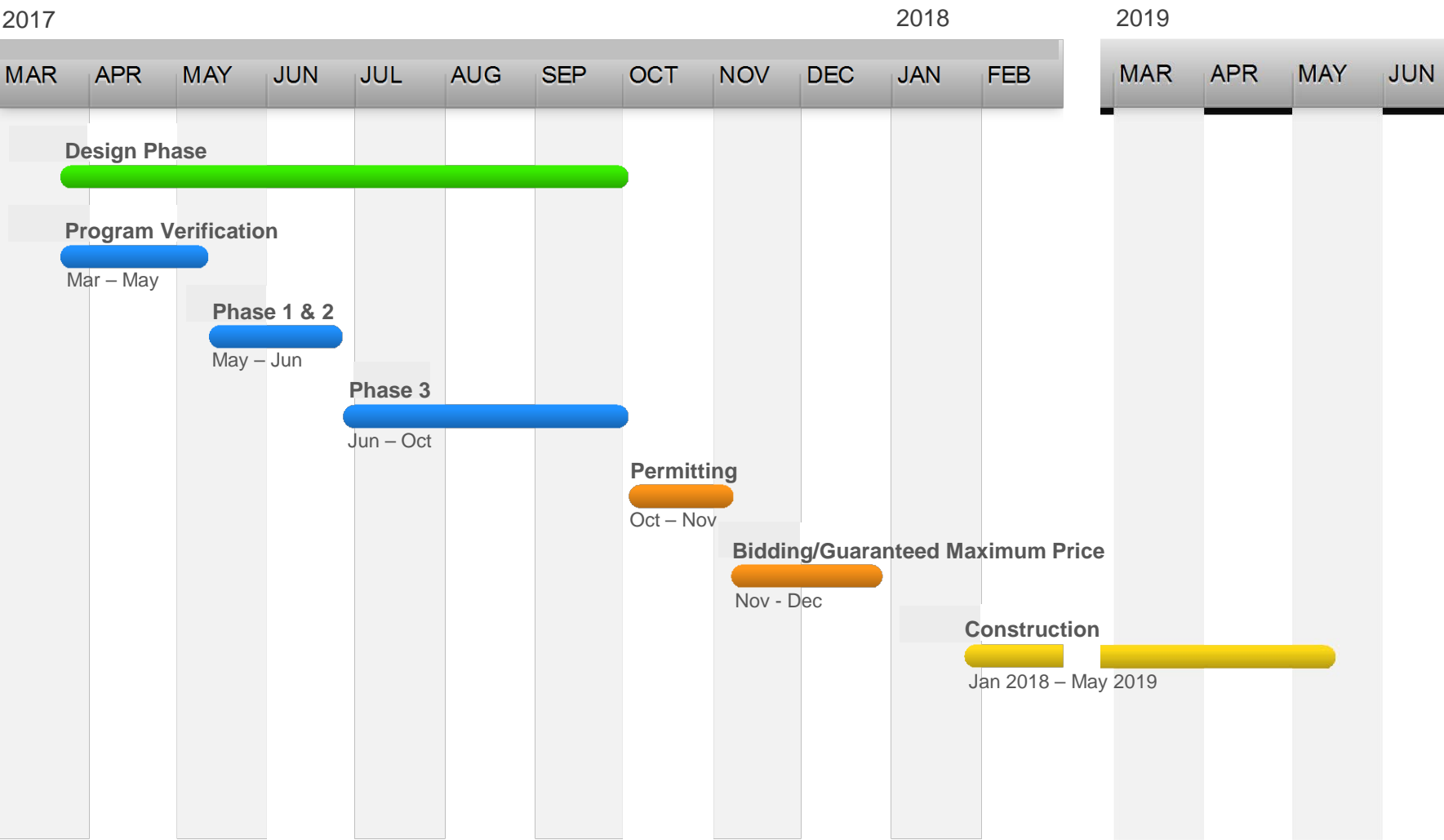
Example – Gymnasium



# Orange County Public Schools



# Orange County Public Schools





# School Rezoning Process

# Rezoning Process

- Step 1 Superintendent commences rezoning
- Step 2 Calendar (Timeline) developed
- Step 3 Calendar shared
- Step 4 Research, Data collection and Meetings with internal stakeholders



# Rezoning Process

- Step 5 Community Meeting(s)
- Step 6 Rule Development Workshop
- Step 7 Public Hearing
- Step 8 Storage of Materials

# Rezoning Process

- Relief School: 37-M-W-4
- 37      OCPS Real Estate Number
- M      Type of School—Middle
- SW      Learning Community—Southwest
- 4      Board Member District—Mrs. Gould



# Rezoning Process

## Contacting the community

- Connect Orange Message(s)
- Posting of Timeline on OCPS website
- Posting of Timeline at Schools

# Rezoning Process

What is considered:

- Anticipated growth and development
- Facility design capacities for each school
- Distance and duration of student travel time (road infrastructure and natural geographic features--lakes)
- School Feeder patterns
- Neighborhoods



# Community Input

Three ways to provide written input:

- Online Survey
- Email
- Petition

Provide input in person at :

- Rule Development Workshop
- Public Hearing

# QUESTIONS?