

February 25, 2021

6:00PM

40% Construction Community Meeting

Site 43-E-SE-2

Welcome! This meeting will begin shortly.



**Orange County
Public Schools**

Site 43-E-SE-2 40% Design/Construction Community Meeting Agenda

February 25, 2021, 6:00 PM

- Welcome – School Board Member Johanna Lopez
- Introductions – Lauren Roth
- School Naming Update: Principal Aleli Vazquez
- Project Update – Architect: Rhodes + Brito Architects

Construction Manager: Pirtle Construction

- Questions and Answers
- Adjournment

***Welcome Message from
District 2 Board Member
Johanna Lopez***



***Introductions by Senior manager,
Facilities Communications***

Lauren Roth



Site 43-E-SE-2 | School Naming Process

Principal Aleli Vazquez

The school naming process for Site 43-E-SE-2 has begun. You may vote at this link:

<https://bit.ly/3beXQaA>



Relief Site 43-E-SE-2 School Naming Survey

As we draw closer to the opening of our new school building, we want to engage our school community to select a name for our new elementary school! This is an exciting time for the Lake Nona community, and we look forward to working with you to name our school. Please note the school naming process below, and we invite you to become involved. If you have any questions, please do not hesitate to email us at 43-E-SE-2_ES@ocps.net.

Any student, parent/guardian, or community member is invited to submit a potential name for our new school.

Submit this survey below before 4:00 p.m., Thursday, March 4, 2021.

When submitting a name, we suggest that you consider :

- The historical or current name of the community or local area in which the school is located.
- The historical or geographical features of the community or local area where the school is located.
- The names of persons who have made outstanding contributions or otherwise have significant meaning to members of the school community.

Site 43-E-SE-2 | School Social Media Pages

Principal Aleli Vazquez

School Social Media Sites have been set up with the links listed below:

- <https://twitter.com/4Ocps>
- <https://www.facebook.com/lakenona21>



Aerial Map

New campus on vacant site to meet district standards for elementary schools:

- Prototypical Core Spaces

Enhanced Learning Environment:

- Latest Technology
- Planned Site Circulation
- Safety
- Community Asset



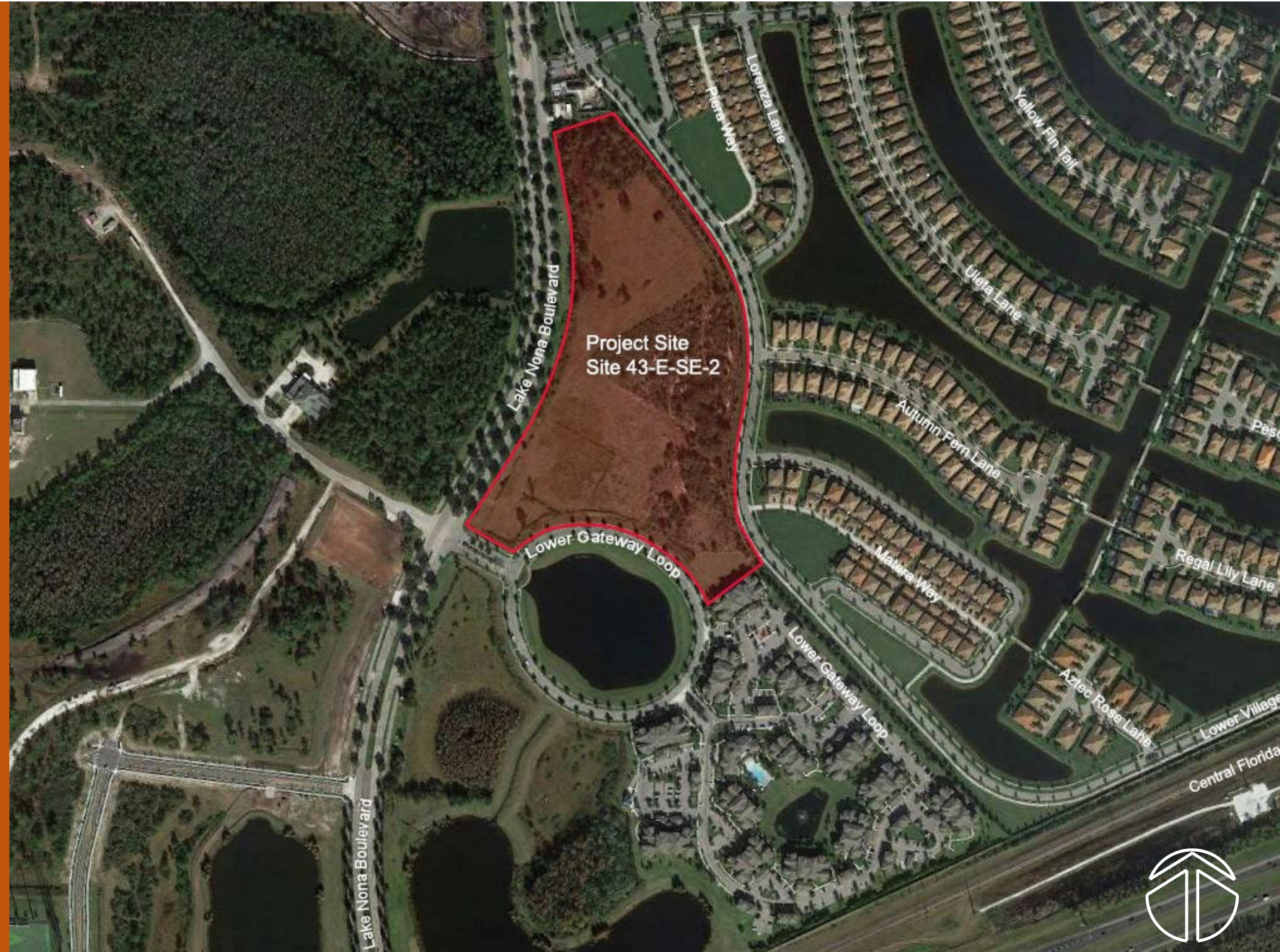
Vicinity Map

New campus on vacant site to meet district standards for elementary schools:

- Prototypical Core Spaces

Enhanced Learning Environment:

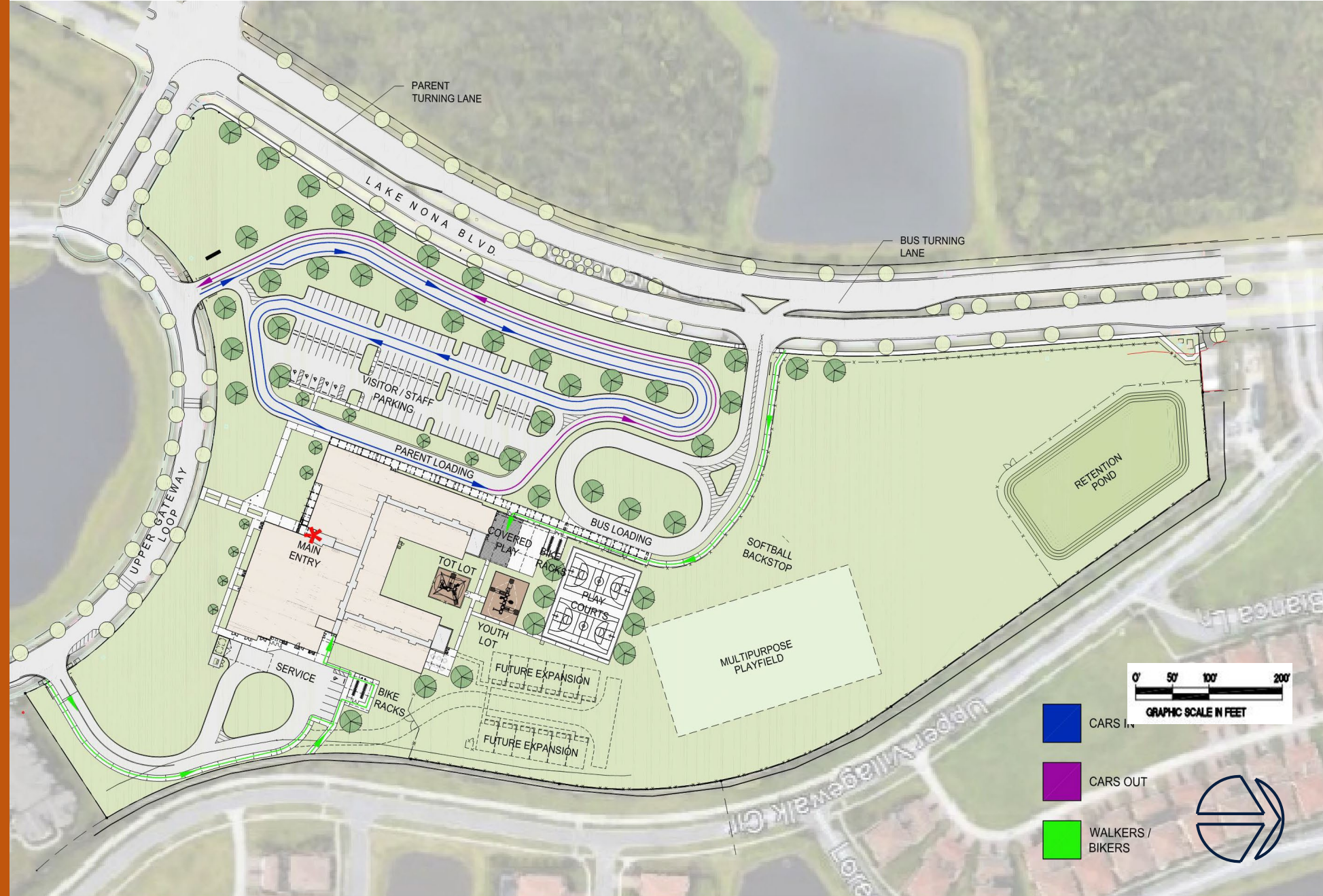
- Latest Technology
- Planned Site Circulation
- Safety
- Community Asset



Site Plan

Site

- 18.3 Acres
- Separate Bus and Parent Drives
- Separate Bus and Parent Loading
- Queuing for 163 Cars
- 15 bus capacity
- Service Loop
- 123 Parking Spaces
- Play Fields / Courts
- Future Expansion



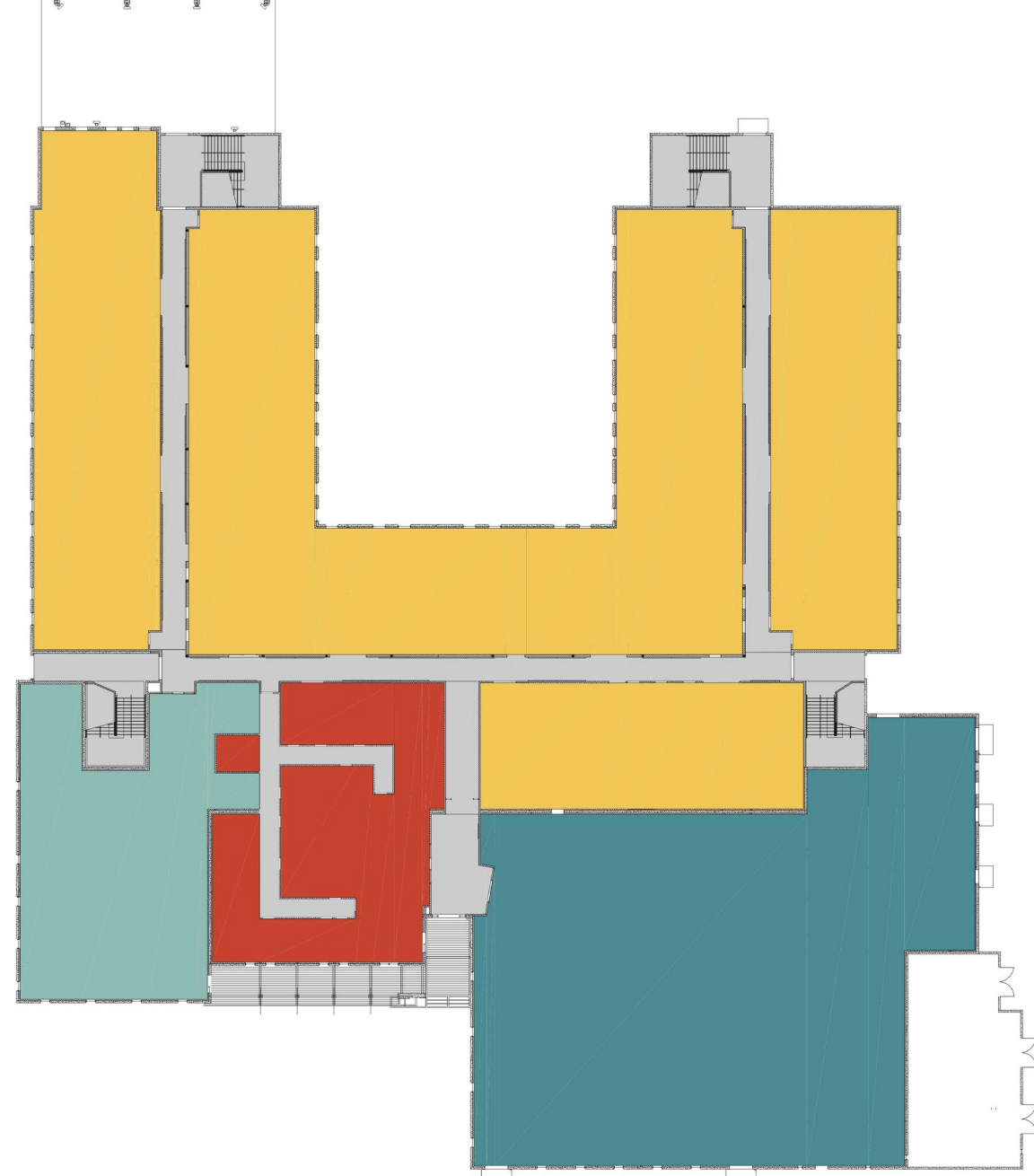
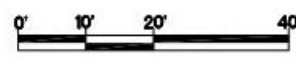
FIRST FLOOR PLAN

LEGEND

- Dining / Multipurpose
- Media Center
- Classrooms
- Administration
- Interior Circulation

816 Student Stations

FIRST FLOOR AREA = 54,411 GSF
SECOND FLOOR AREA = 31,427 GSF
TOTAL = 85,838 GSF



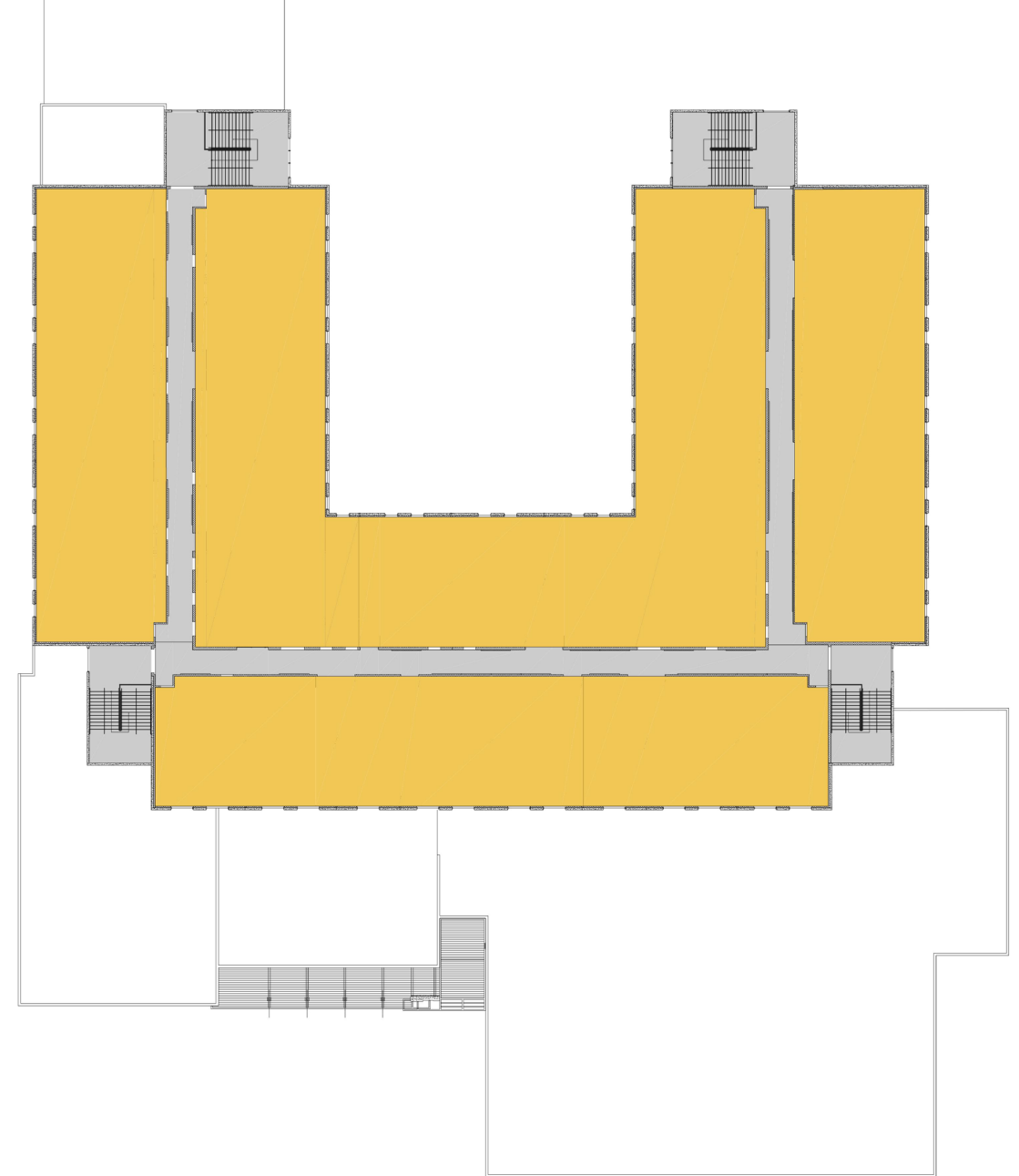
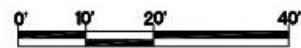
SECOND FLOOR PLAN

LEGEND



816 Student Stations

FIRST FLOOR AREA = 54,411 GSF
SECOND FLOOR AREA = 31,427 GSF
TOTAL = 85,838 GSF



Example – Administration / Lobby

☑ Administration

The administrative area includes:

- Single point of entry during school hours
- Lobby
- Administrative offices, workroom & storage
- Large conference room
- Clinic
- Teacher planning



Example – Classroom

☑ Classroom

Typical classrooms will include:

- Storage Cubbies
- Markerboard / Tack boards
- Audio Enhancement
- Interactive Flat Panel
- Student and teacher computers
- Millwork with sink and storage cabinets



Example – Technology

✓ Technology Campus: CCTV Studio

The technology package will include:

- Student and teacher computers
- Interactive Flat Panel
- Whiteboards
- Skills labs (Computer & Science)
- Wireless Access
- Audio Enhancement



Example – Media Center

☑ Media Center

The Media Center will include:

- Genius bar
- Library tables for an entire class
- Story-telling area
- CCTV studio
- Audio Enhancement



Example – Multi-Purpose Room

☑ Cafeteria

The Cafeteria will include:

- Kitchen
- Two Serving Lines
- Teacher Dining
- Elevated Stage
- Extended Day Office
- Restrooms



Previous OCPS Schools using the same/similar prototype

- **Sunshine Elementary School**
- **Vista Pointe Elementary School**
- **Summerlake Elementary School**
- Dover Shores Elementary School
- Engelwood Elementary School
- Mollie Ray Elementary School
- Millennia Gardens Elementary School
- Clay Springs Elementary School
- Lovell Elementary School

Sustainability



Site:

- Low Impact Design (LID) stormwater design
- Native/low water plants – reduce water consumption

Building:

- High Efficiency Chillers (8% energy reduction)
- Light colored roof to reduce heat gain and improves energy performance
- Energy Star rated equipment
- Water saving toilets, faucets, and fixtures
- All general classrooms have daylighting
- Over 75% of ALL spaces have daylighting
- Thermal efficient windows/glazing
- Fully automated building controls system 10% more energy

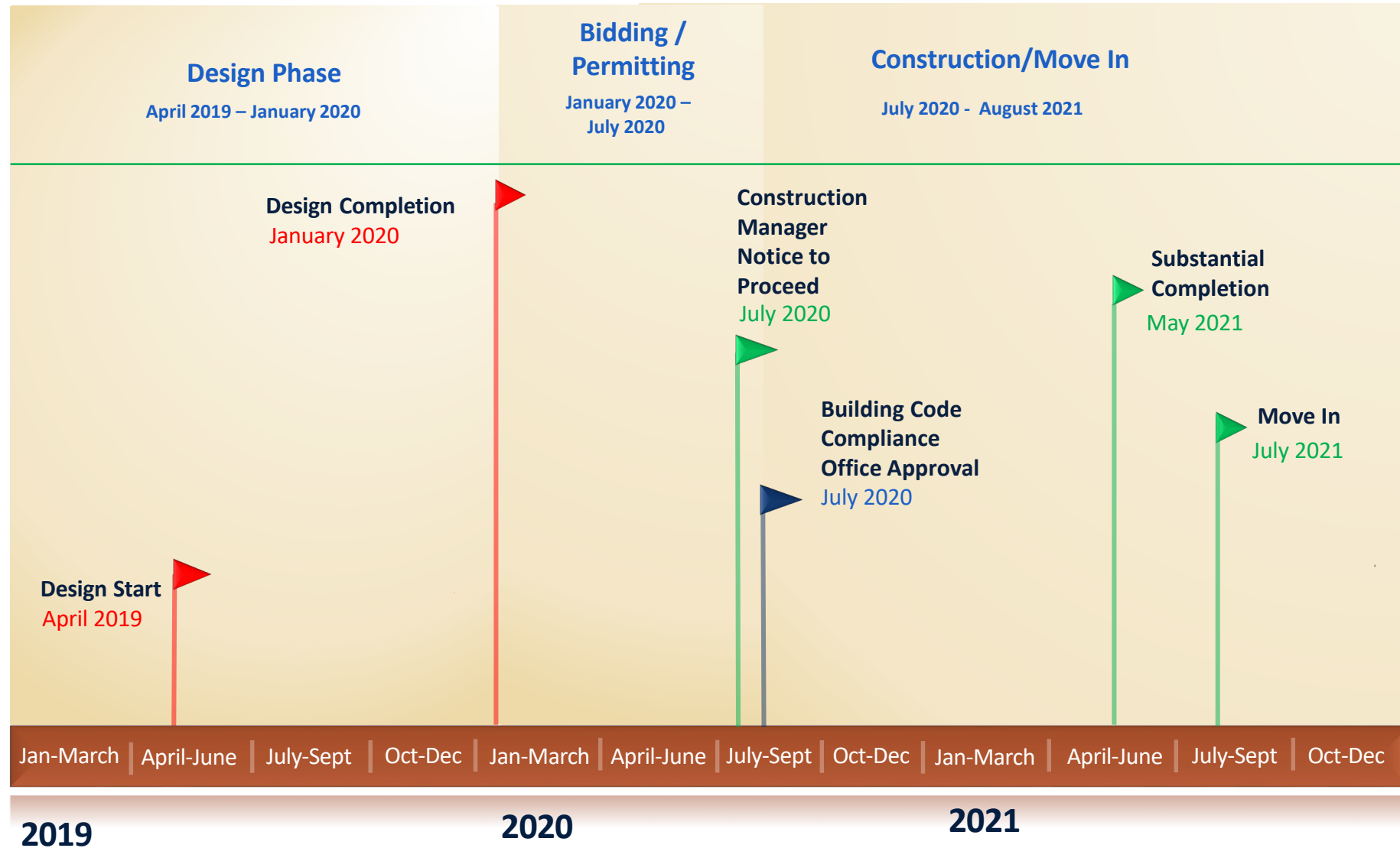
Site 43-E-SE-2 ES Relief



Site 43-E-SE-2 ES Relief



Project Schedule



Construction Update and Milestones

- Notice to Proceed (NTP) was issued July 6, 2020.
- Site clearing, import of fill, and de-mucking were completed in August.
- Tilt wall panels were completed in October.
- Structural Steel Erection was completed in November.
- Installation of deep storm drainage was completed in November.
- Roofing work will be completed by end of February.
- Exterior painting is ongoing.
- Interior framing and finishes are ongoing.
- Project remains on schedule for Substantial Completion Summer 2021.



Site 43 Elementary School





Site 43 Elementary School





Site 43 Elementary School





Site 43 Elementary School





Site 43 Elementary School





Site 43 Elementary School





Site 43 Elementary School





Site 43 Elementary School



01-21-21



Site 43 Elementary School



Nearly 450 truckloads of unsuitable soils removed from site



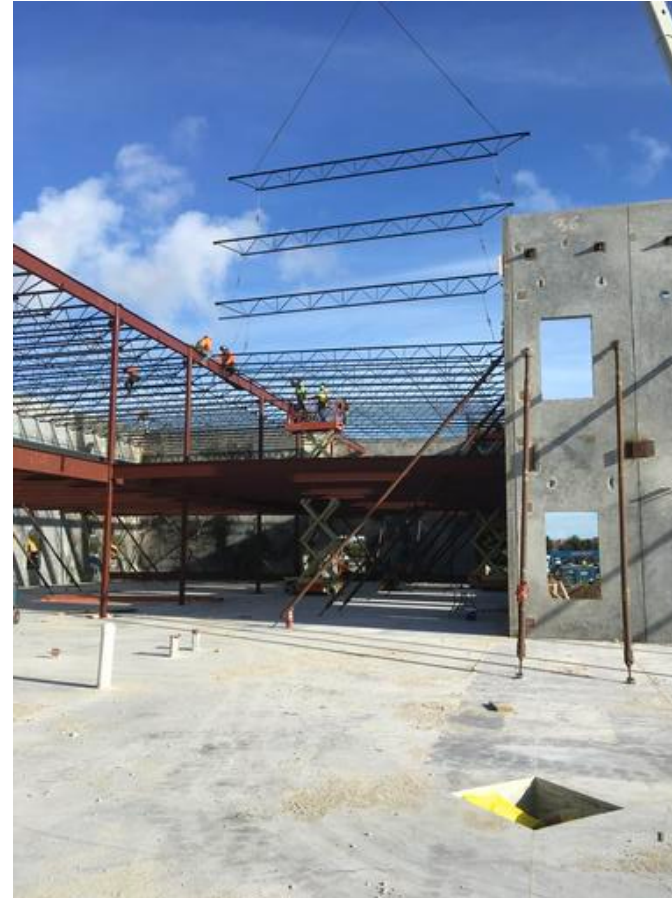
Soil Import

Forming of Tilt Panels on Casting Beds



Pouring of Tilt Panels with a Boom Pump

Erection of Tilt Panels with 250 Ton Crawler Crane



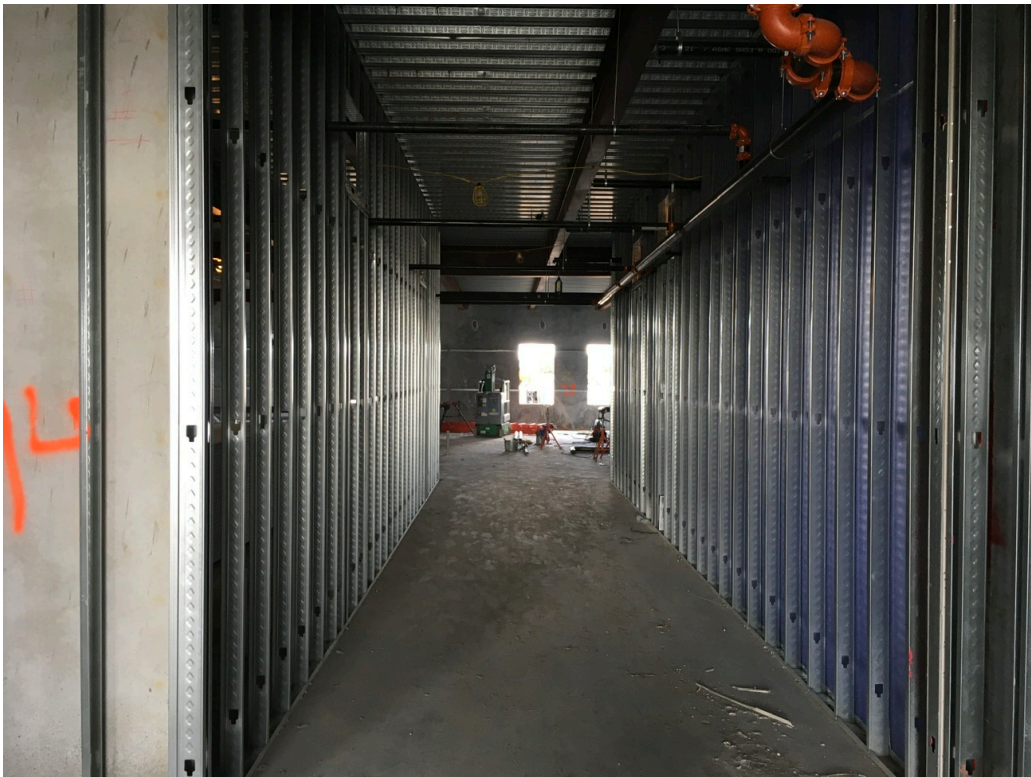
Structural Steel for Roof Deck

Preparation of 2nd Floor Deck for Concrete



Roof Deck Installation

Interior Corridor Framing



Interior Classroom Framing

Interior Door Frames



Interior Wall Insulation



Interior Drywall

Interior Wall Finishing at Stairwell



Foam Roof Insulation



Lightweight Insulating Concrete

Roof Membrane



Roof Access Hatch

Installing Covered Play Structure



Covered Play Structure

Transformer Placement



Building Main Electric Panel

Installation of Deep Storm Drainage Pipe and Structures



Installation of Main Water Line

Grading and Base Infill for Parent Parking



Asphalt paving for Parent Parking

Mixing for Service Area Drive



Sod Installation



Questions & Answers