

Thursday, January 16, 2020

30% Design Community Meeting

Site 43-E-SE-2

Please sign in on your mobile device: <http://communitymeeting.ocps.net/>



**Orange County
Public Schools**

Site 43-E-SE-2

Meeting Agenda

January 16, 2020, 6:00PM

- Welcome – School Board Member, Johanna Lopez
- Introductions – Lauren Roth
- Project Update
 - Architect: Rhodes+Brito Architects
 - Construction Manager: Pirtle Construction
- Questions and Answers
- Adjournment

Aerial Map

New Campus on vacant site to meet District Standards for elementary schools:

- Prototypical Core Spaces

Enhanced Learning Environment:

- Latest Technology
- Planned Site Circulation
- Safety
- Community Asset



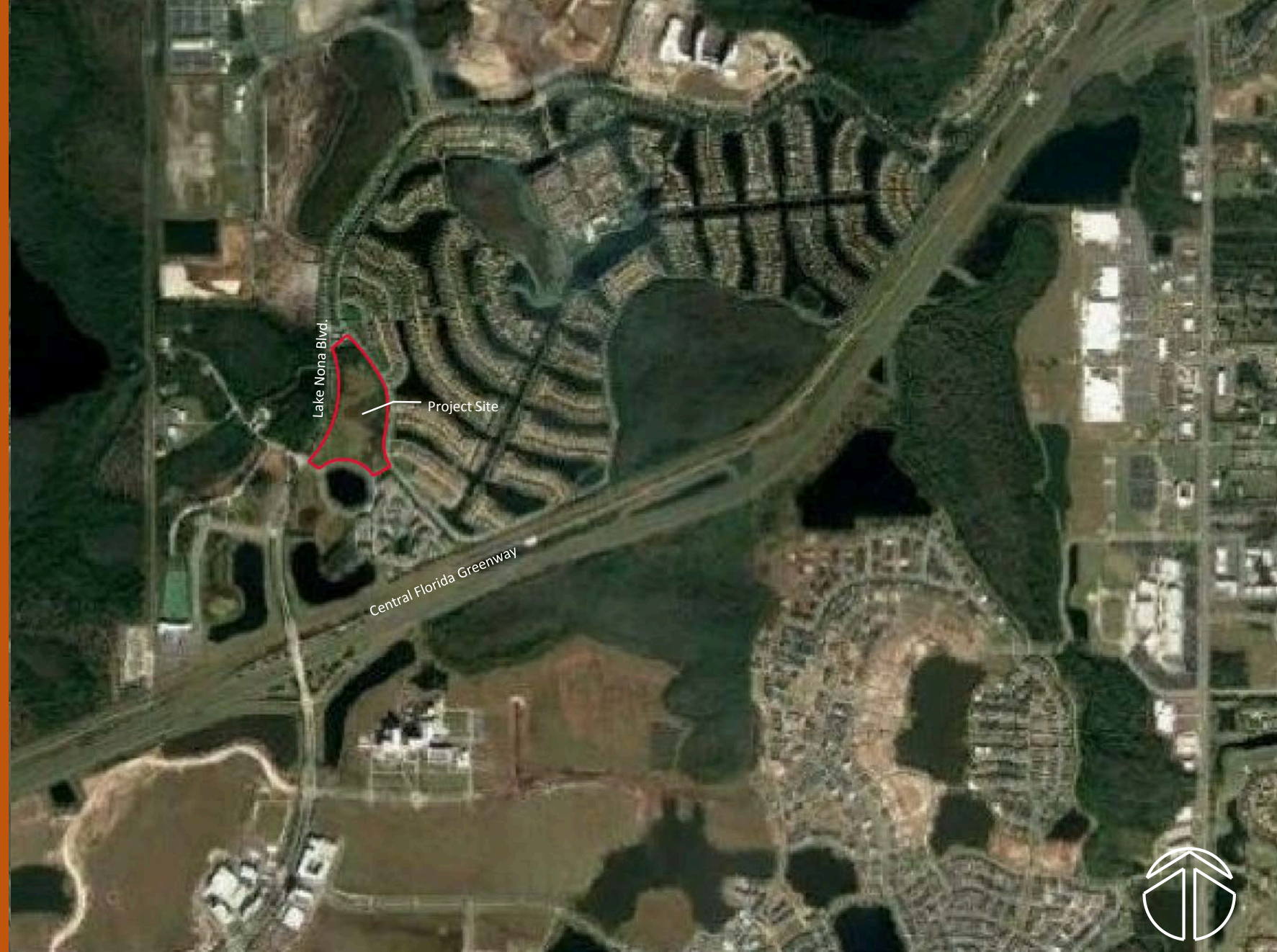
Vicinity Map

New Campus on vacant site to meet District Standards for elementary schools:

- Prototypical Core Spaces

Enhanced Learning Environment:

- Latest Technology
- Planned Site Circulation
- Safety
- Community Asset



Vicinity Map

New Campus on vacant site to meet District Standards for elementary schools:

- Prototypical Core Spaces

Enhanced Learning Environment:

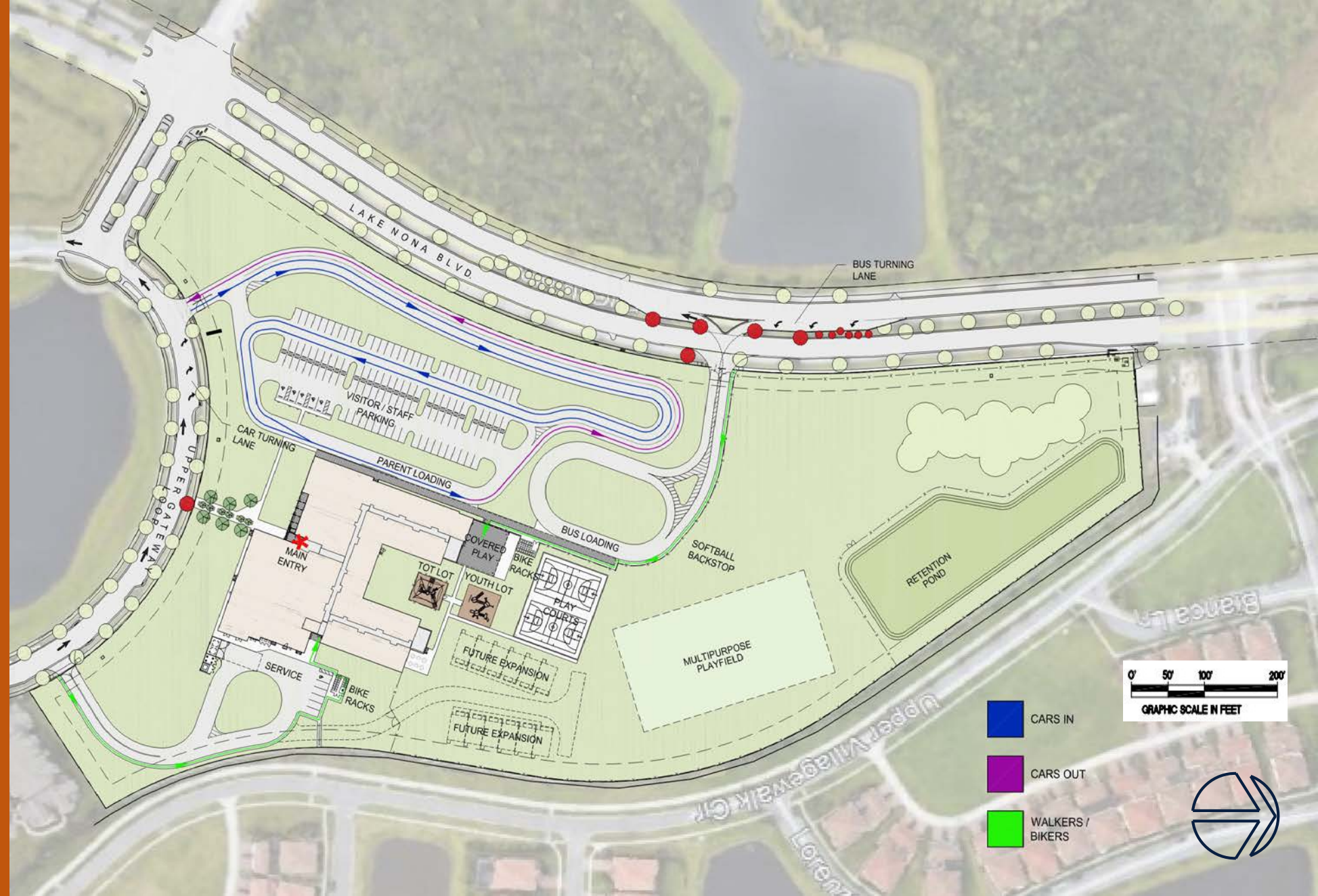
- Latest Technology
- Planned Site Circulation
- Safety
- Community Asset



Site Plan

Site

- 18.3 Acres
- Separate Bus and Parent Drives
- Separate Bus and Parent Loading
- Queuing for 163 Cars
- 15 bus capacity
- Service Loop
- 123 Parking Spaces
- Play Fields / Courts
- Future Expansion



Example – Classroom

☑ Classroom

General Classrooms will include:

- Storage Cubbies
- Markerboard / Tack boards
- Audio Enhancement
- Interactive Flat Panel
- Student and teacher computers
- Millwork with sink and storage cabinets



Example – Technology

✓ Technology : Campus

The technology package will include:

- Student and teacher computers
- Interactive Flat Panel
- White boards
- Skills labs (Computer & Science)
- Wireless Access
- Audio Enhancement



Example – Media Center

☑ Media Center

The Media Center will include:

- Genius bar
- Library tables for an entire class
- Story-telling area
- CCTV studio
- Audio Enhancement



Example – Multi-Purpose Room

☑ Cafeteria

The Cafeteria will include:

- Kitchen
- Two Serving Lines
- Teacher Dining
- Elevated Stage
- Extended Day Office
- Restrooms



Example – Music Room

☑ Specialty Classrooms

- Art Classroom with kiln
- Science Classroom
- Music Classroom



Example – Administration / Lobby

☑ Administration

The administrative area includes:

- Single point of entry during school hours
- Lobby
- Administrative offices, workroom & storage
- Large conference room
- Clinic
- Teacher planning



Example – Play Equipment

☑ Physical Education

Physical Education will include:

- PE Office and storage
- Covered play canopy
- Basketball Courts
- Tot lot play structure
- Youth lot play structure
- Playfields



Example – Bus Drop-off

☑ Site Circulation

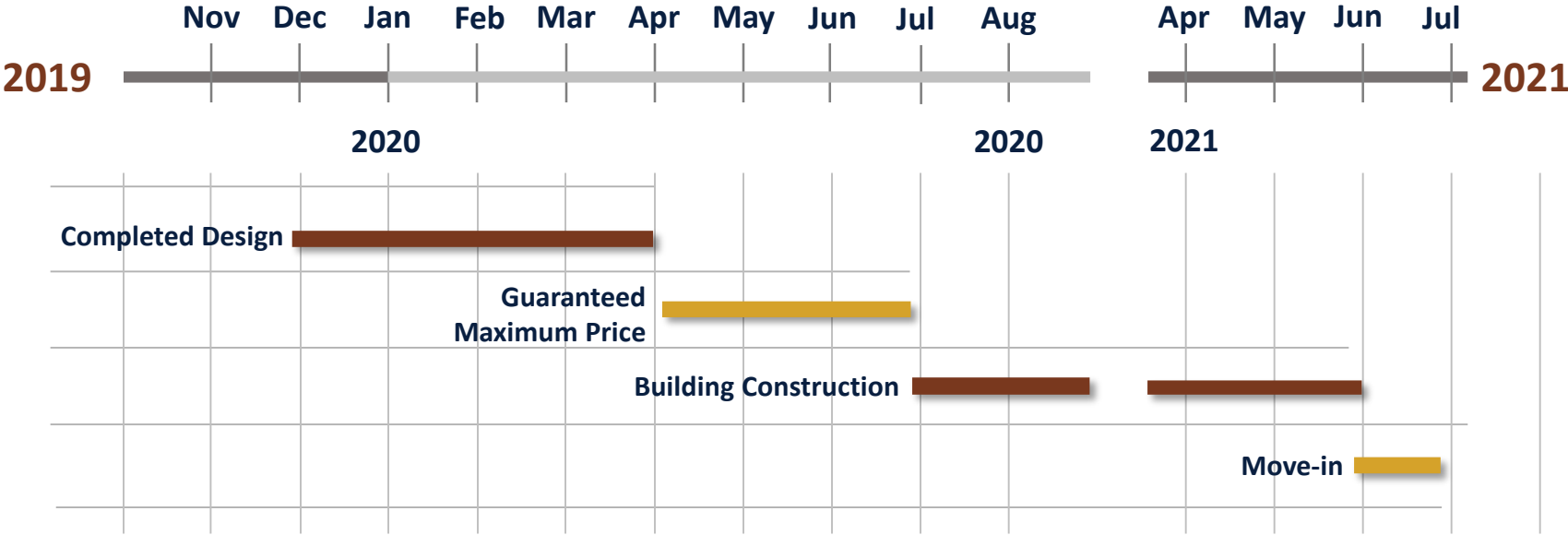
- On-site car stacking
- On-site parking
- Bus loop
- Covered walkways
- Safe pedestrian paths
- Bike racks



Previous OCPS Schools using the same/similar prototype

- Millennia Gardens Elementary School
- Clay Springs Elementary School
- Lovell Elementary School
- Engelwood Elementary School
- Mollie Ray Elementary School
- Dover Shores Elementary School
- Site 20-E-SW-4 Elementary School
- Site 83-E-SE-3 Elementary School
- Site 85-E-W-4 Elementary School

Design & Construction Schedule



Sustainability



Site:

- Low Impact Design (LID) stormwater design
- Native/low water plants – reduce water consumption

Building:

- High Efficiency Chillers (8% energy reduction)
- Light colored roof to reduce heat gain and improves energy performance
- Energy Star rated equipment
- Water saving toilets, faucets, and fixtures
- All general classrooms have daylighting
- Over 75% of ALL spaces have daylighting
- Thermal efficient windows/glazing
- Fully automated building controls system 10% more energy



Questions & Answers