



**100% Design/
Construction
Kick-Off
Community
Meeting
Westridge MS
Functional Equity
Classroom Addition**

November 13, 2023

Please sign in on your mobile device:
<https://communitymeeting.ocps.net/>



**OC
PS** | **Orange County
Public Schools**

Westridge MS /Functional Equity Classroom Addition Meeting Agenda

November 13, 2023 6:00 PM

- Welcome – School Board Member: Vicki-Elaine Felder
- Introductions – Andy Orrell, Senior Manager of Facilities Communication
- Project Update – Grant Saso, AIA (Little Diversified Architectural Consulting)
- Construction Update – Jorge Goyco (Thornton Construction)
- Questions and Answers
- Adjournment



Welcome Message

Vicki-Elaine Felder,
District 5 School Board Member

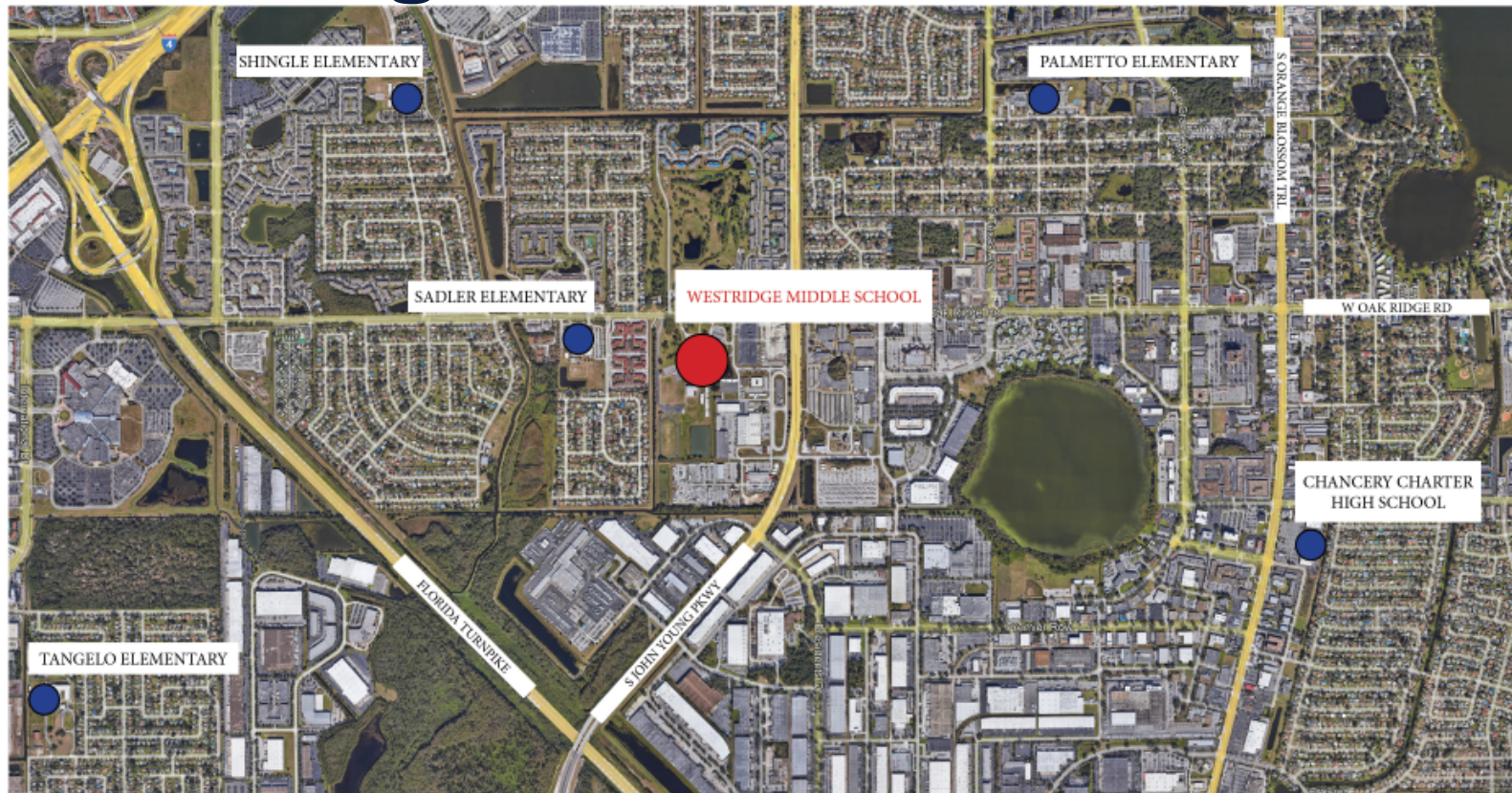


Introduction

Andy Orrell,
Senior Manager of
Facilities Communications



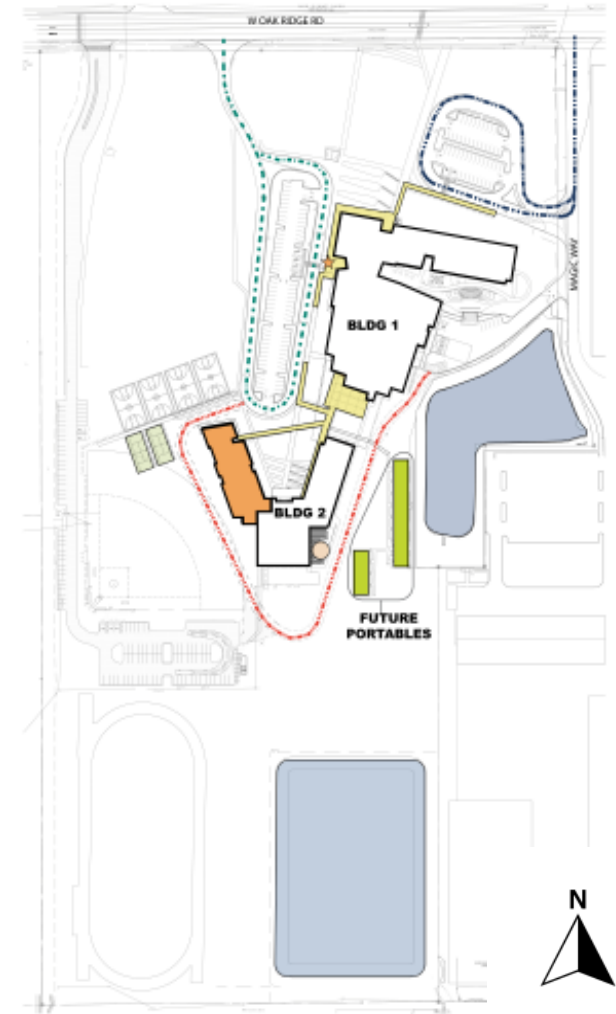
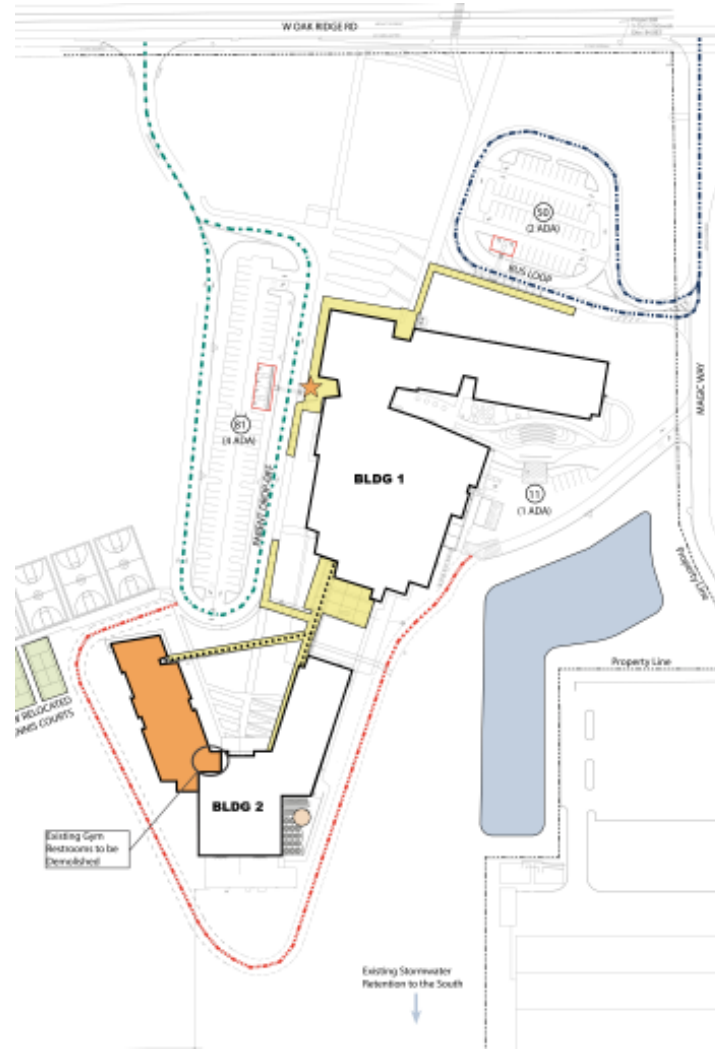
Surrounding Context



Site Plan

No. FLOORS: 1

LEGEND	
	Parent Drop Off
	Bus Drop Off
	Fire Access Road
	New Addition
	Removed Covered Walkway
	New Covered Walkway
	New Sidewalk
	New PE Facilities
	Storm Water Retention
	CEP
	Front Door
	Existing Parking



The Stats



ESTIMATE: \$6.6 MILLION



PROTOTYPE MIDDLE SCHOOL
STUDENT CAPACITY: 1215

Program Elements

The Functional Equity program, new classroom addition, includes:

- Classrooms
- ESE Rooms
- Resource Rooms
- Technology Lab

The Capital Renewal program includes:

- Upgrading intercom and intrusion detection systems

Building Area: 13,247 sqft

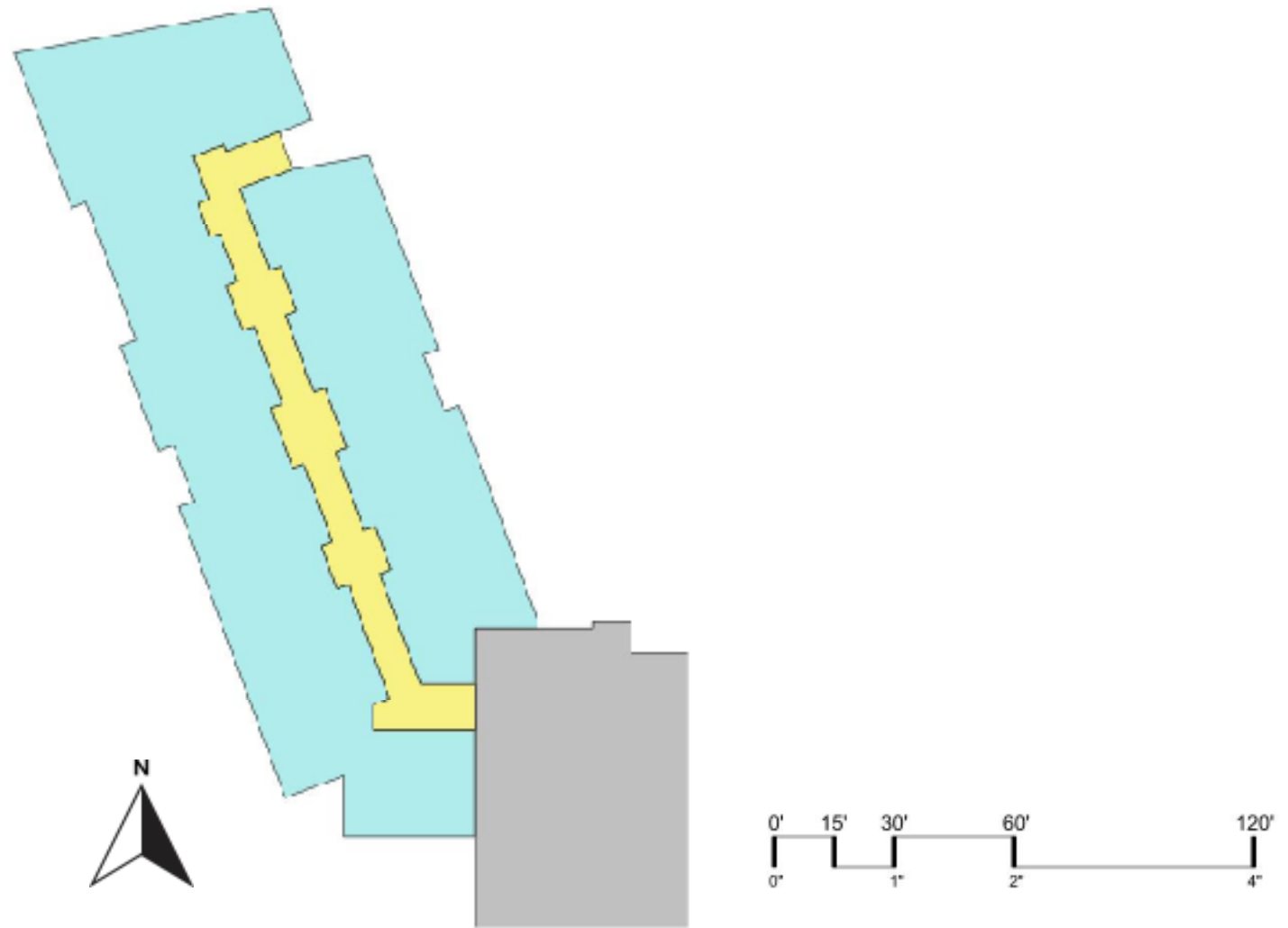
Student Stations: 89

(6) Classrooms

(2) ESE Classrooms

(4) Resource Rooms

(1) Technology Lab





Westridge MS Functional Equity Classroom Addition

Sustainability

Sustainable Design Criteria



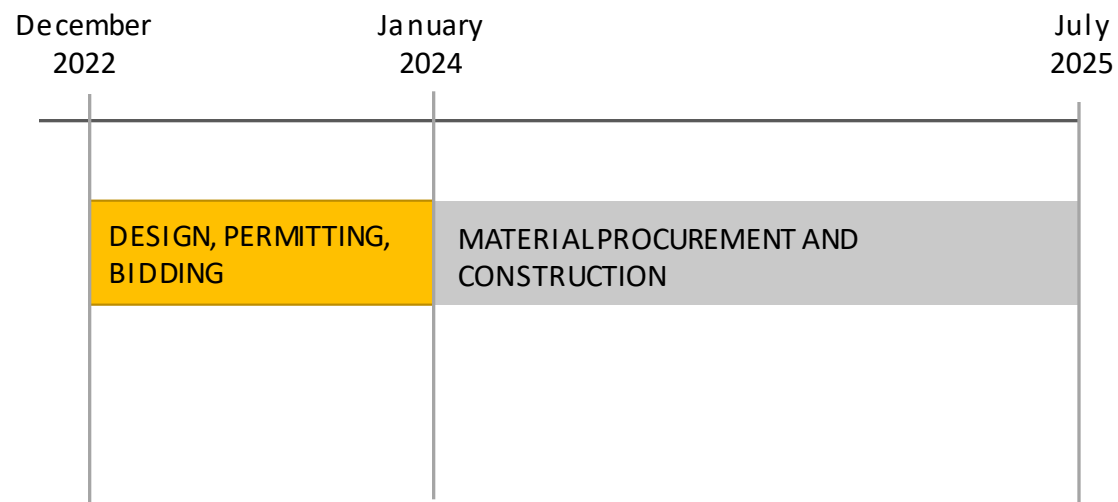
Building

- 10% more energy efficient than ASHRAE 90.1 standard
- Light colored roof to reduce heat gain and improves energy performance
- Energy Efficient LED Lighting
- Energy Star rated equipment
- Water saving toilets, faucets, and fixtures
- All classrooms have daylighting
- Over 75% of ALL spaces have daylighting
- Thermal efficient windows/glazing

Site

- Native/low water plants – reduce water consumption
- Low Impact Design (LID) stormwater design

Schedule



OCPS: Westridge MS

Site Logistics

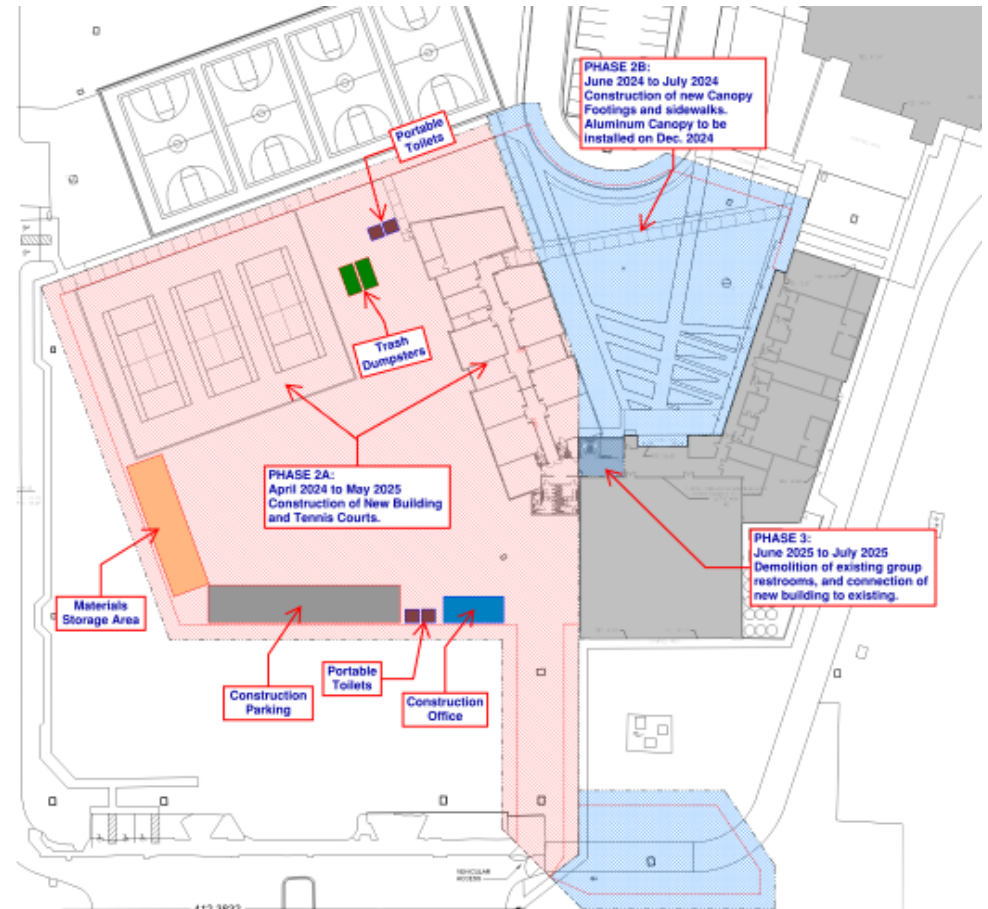
Project Summary:

Construction of a New single-story building with capacity to accommodate the classes currently performed in portables.

Working Hours:

Monday - Friday: 7:00AM to 5:00PM

Saturdays - Sundays: 8:00AM to 5:00PM
(As Needed)



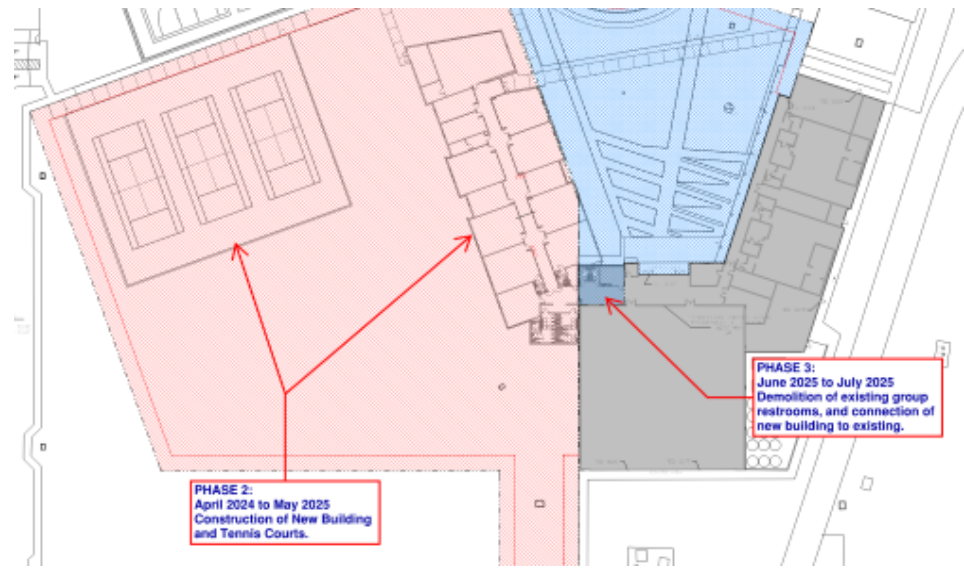
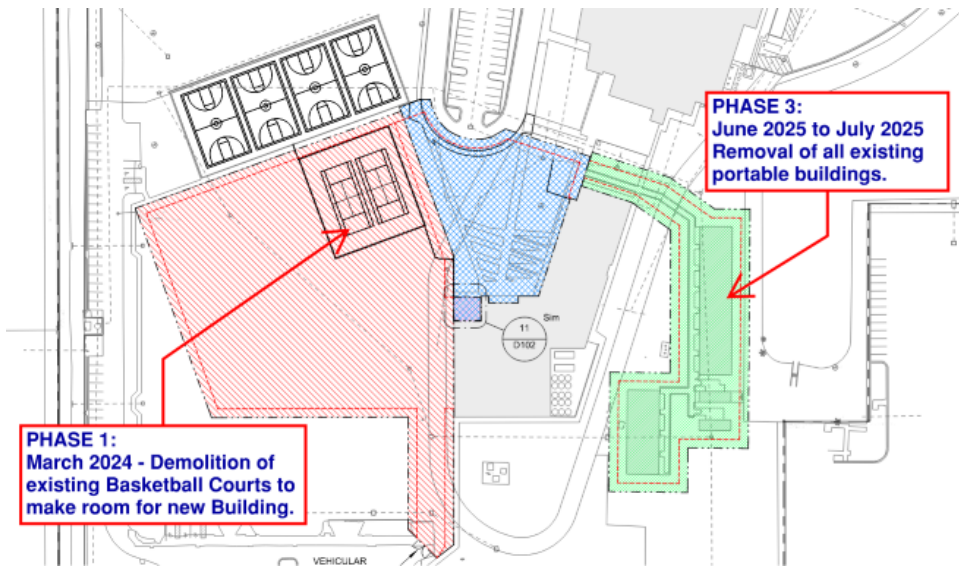
OCPS: Westridge MS – Site Logistics

What to expect during each Phase of Construction:

- **Phase 1:** (March 2024) - Demolition of existing Basketball Courts to make room for new Building.
- **Phase 2:** (April 2024 to May 2025) – Construction of New Building and Tennis Courts.
- **Phase 3:**
 - (June 2025 to July 2025) - Demolition of existing group restrooms, and connection of new building to existing.
 - (June 2025 to July 2025) – Removal of existing portable buildings and demolition of all infrastructure.

OCPS: Westridge MS – Site Logistics

What to expect during each Phase of Construction:



Questions & Answers

Westridge MS Functional Equity Classroom Addition



This Community Meeting Presentation is posted
at facilities.ocps.net and on the School Board Member's page.

Our Promise. Your Support. Their Success.

Our Promise. Your Support. Their Success.

Our Promise. Your Support. Their Success.

Thank You



**Orange County
Public Schools**