

Orange County Public Schools



80-H-SW-4
Land Use Plan
Community Meeting
July 27, 2016

WINNER

the broad prize
for urban education



Facilities Planning
Orange County Public Schools

The Need.....

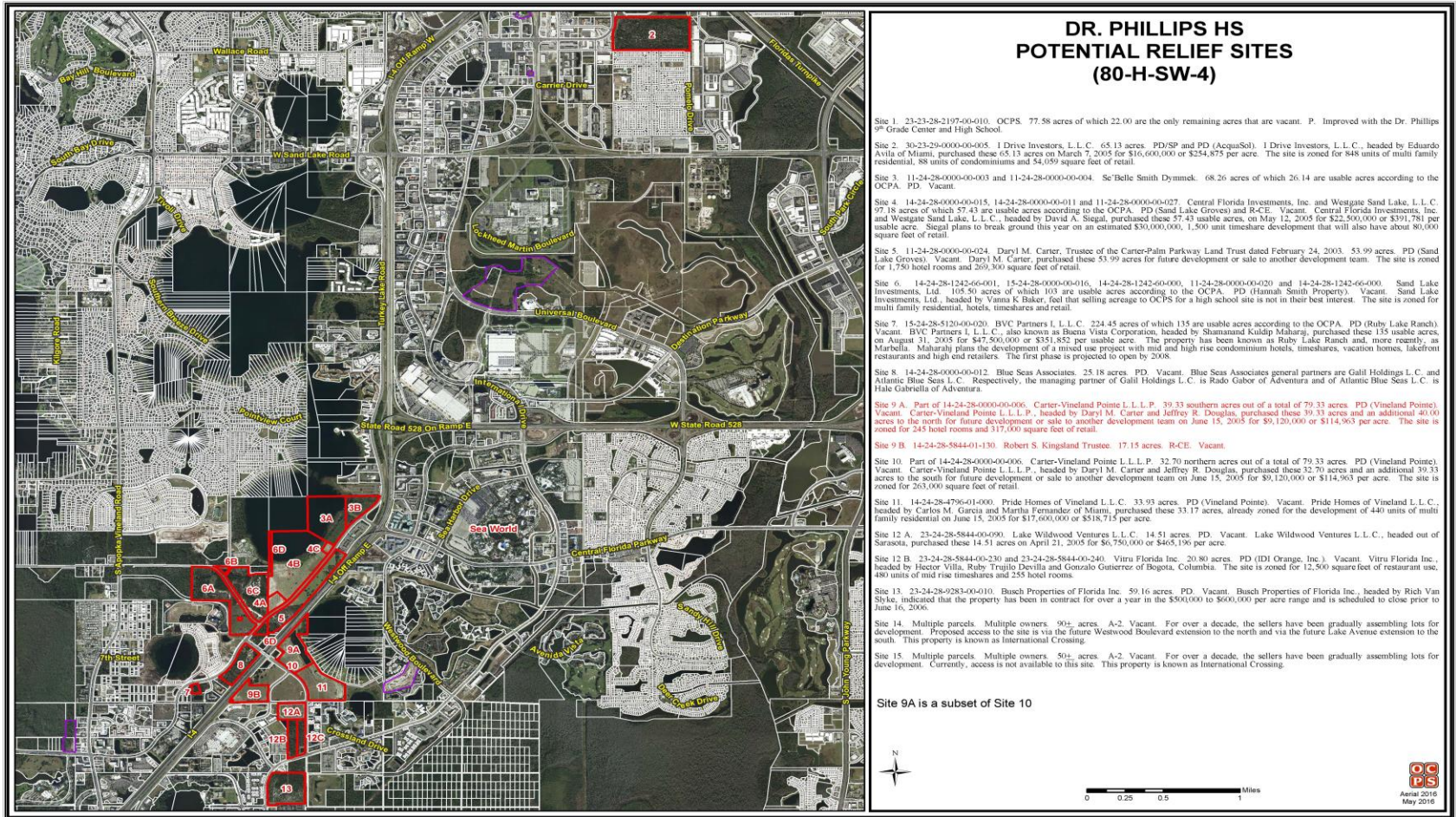
Historical Enrollment

High School	Permanent Program Capacity	07-08	08-09	09-10	10-11	11-12	12-13	13-14	14-15	15-16
Dr. Phillips	2799	3570	3593	3648	3659	3646	3651	3510	3498	3593
Freedom	2606	3032	2817	2792	2928	3099	3124	3232	3280	3438
Total	5405	6602	6410	6440	6587	6745	6775	6742	6778	7031

Enrollment Projection

High School	Permanent Program Capacity	16-17	17-18	18-19	19-20	20-21	21-22	22-23	23-24	24-25
Dr. Phillips	2799	3762	3819	3826	3909	4118	4317	4433	4529	4427
Freedom	2606	3650	3685	3753	3835	3825	3797	3831	3915	4075
Total	5405	7412	7504	7579	7744	7943	8114	8264	8444	8502

Researched Areas in 2006





Where we are today.....

- ✓ Technical Review Group (TRG) Pre-Application Meeting
- ✓ Application submitted and found sufficient for review
- ✓ Community Meeting
- ✓ Comments on initial submittal due to OCPS (Currently reviewing)
- ☐ TRG meeting
- ☐ Development Review Committee meeting
- ☐ Planning & Zoning Commission public hearing
- ☐ Board of County Commissioners public hearing

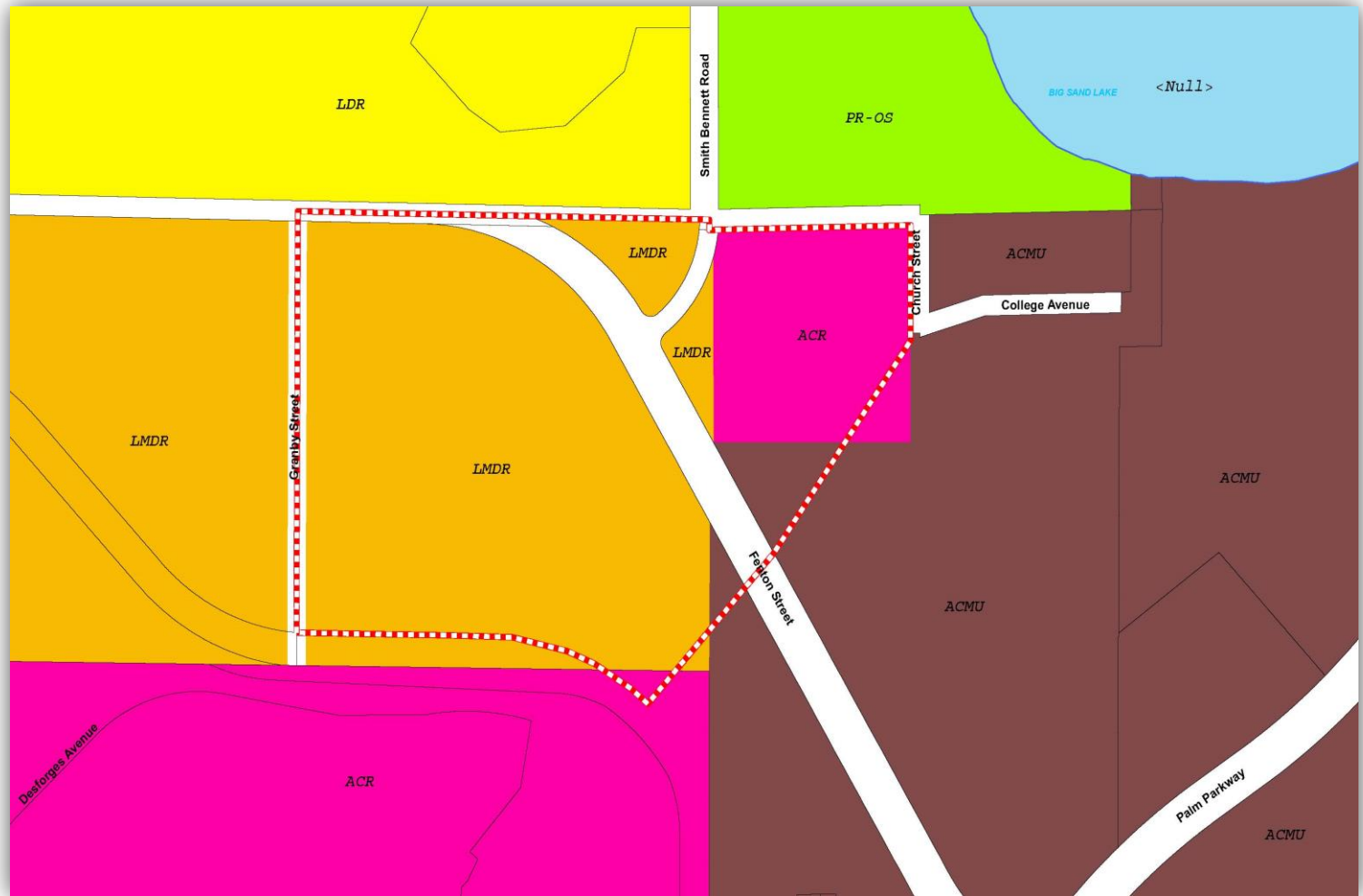
Development Data

- Total Acres: 50.00 ac
- Proposed Building Square Footage: 400,000 sq.ft
- Parking: 410 spaces / Queuing: TBD at Development Plan
- Building Height: 84 ft. Max. (6 stories)
- Student Capacity: 3,500 students
- Waivers requested from the Orange County Code:
 - i. Lot size – reduce minimum lot area from 65 acres to 50 acres
 - ii. Height – increase building height to 84 ft. maximum
 - iii. BVN – exemption from standards for public use

Land Use Plan

- Request to change the use from residential uses to public high school
- Buffers shall comply with PSSR's
- Setbacks shall comply with Orange County code
- Access to site will be from the proposed Connector Road

Future Land Use



Orange County Public Schools



Current
Zoning



Orange County Public Schools



Aerial

Traffic

- Project PM Peak Hour Trips = 455 Trips
- Estimated PM Peak Trips current zoning = 150 Trips
- Traffic Study will be performed with Development Plan
- Operational improvements may be required
- School attendance zone may impact travel direction
- On-site Queuing will be provided



Connector Road

Drainage

- Located in South Florida Water Management District
- Stormwater design will comply with State and County Requirements
- Water quality treatment will be provided with on-site facilities
- Off-site discharge will be required to match existing conditions.

What happens next.....

- ☐ Technical Review group meeting
- ☐ Development Review Committee meeting
- ☐ Planning & Zoning Committee public hearing
- ☐ Board of County Commissioners public hearing

Down the road.....

OCPS Facilities community meeting process for
High Schools:

- ❖ 30% Schematic Design
- ❖ 60% Design Development
- ❖ 100 % Design Complete/Construction Kick-off
 - ❖ 40 % Construction Complete
 - ❖ 100% Construction Complete

Dates and location to be determined

Questions & Discussion