

Orange County Public Schools



WINNER

the broad prize
for urban education



Site 133-K8-N-6
Project Update
Community Meeting
February 1st, 2016

Site 133-K8-N-6

Meeting Agenda

February 1st, 2016 Audubon Park Elementary, 6:00 pm

- Welcome – School Board Member: Nancy Robinson
- Introductions
- Project Update – Facilities Meeting Organizer
OCPS Program Management Team
Geotechnical Consultant: Ardaman & Associates, Inc.
- Questions and Answers
- Adjournment

Orange County Public Schools

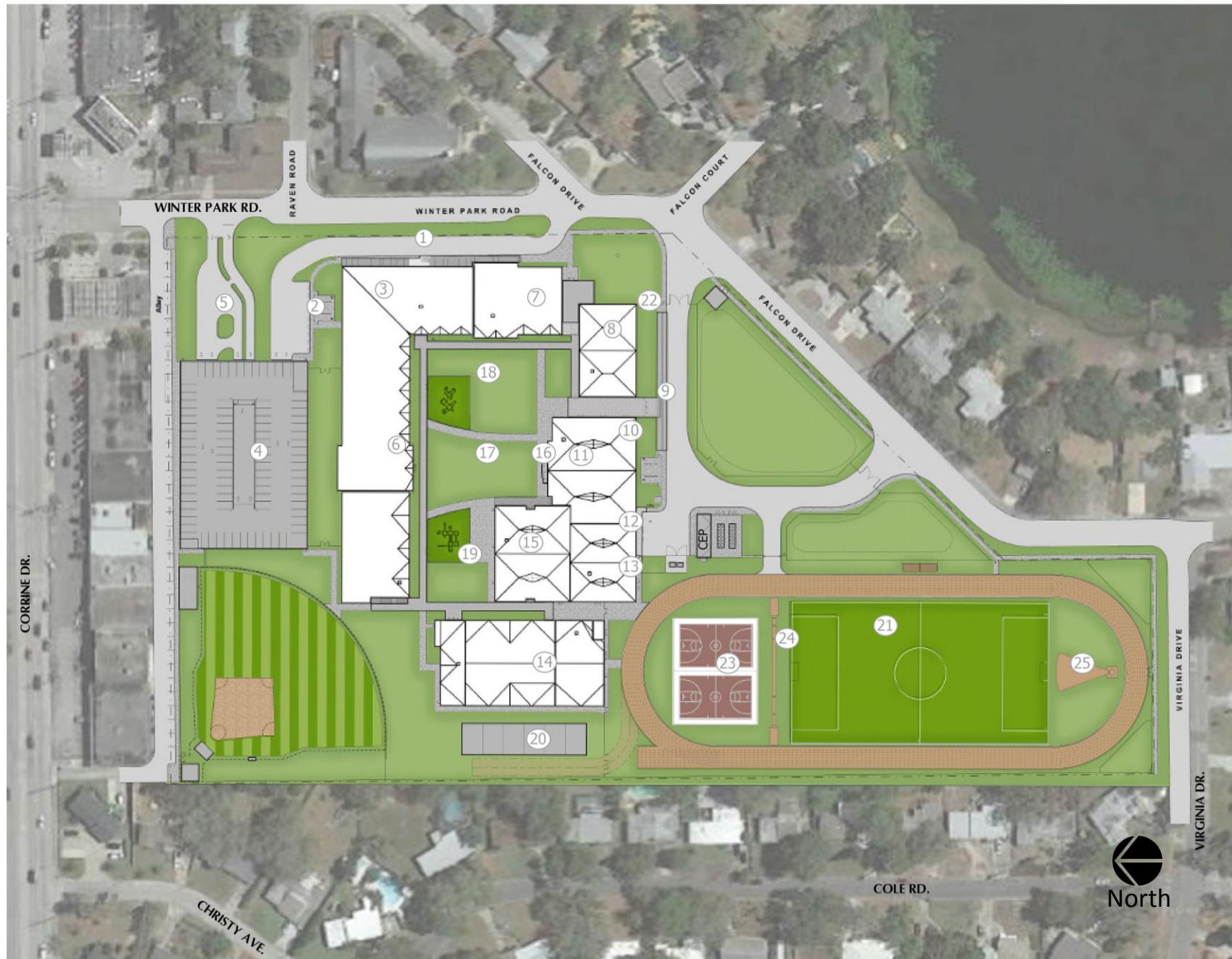


North

Orange County Public Schools

SITE PLAN

- ① Parent Drop Off
- ② Covered Loading
- ③ Administration
- ④ Parking Garage
- ⑤ Surface Parking
- ⑥ Classroom
- ⑦ Classroom
- ⑧ Media Center
- ⑨ Bus Loading
- ⑩ Cafeteria
- ⑪ Stage
- ⑫ Cafeteria Support
- ⑬ Service Yard
- ⑭ Gym
- ⑮ Music/Art
- ⑯ Amphitheater
- ⑰ Multi-Purpose Courtyard
- ⑱ Pre-K/K Play Area
- ⑲ 1st-3rd Grade Play Area
- ⑳ Portables
- ㉑ Track/Fields
- ㉒ Bus Pickup
- ㉓ Basketball Courts
- ㉔ Long Jump Lanes
- ㉕ Shot Put

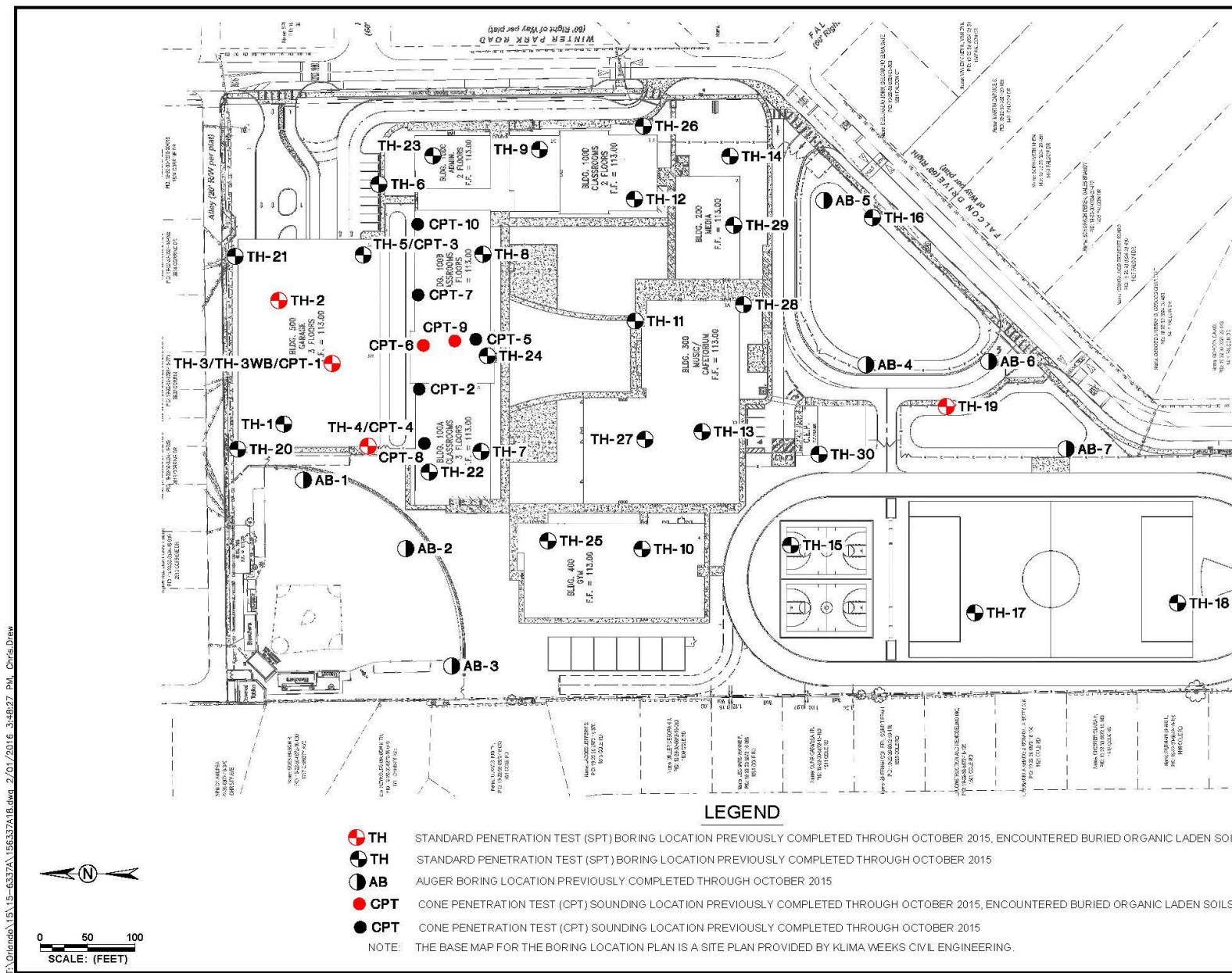


Geotechnical Engineering – Due Diligence

- History of the Site



Orange County Public Schools



Date & Total Count	SPT & Auger Borings	Depth (FT)
4/16/15. TH Total: 13	TH-1	40
	TH-7	20
	TH-9	20
	TH-10	20
	TH-11	20
	TH-12	20
	TH-13	20
	TH-14	20
	TH-15	20
	TH-16	20
	TH-17	20
	TH-18	20
	TH-19	45
9/11/1515. TH Total: 17 , AB Total: 7	TH-2	40
	TH-3	70
	TH-4	40
	TH-5	40
	TH-6	20
	TH-8	20
	TH-20	40
	TH-21	40
	TH-22	30
	TH-23	30
	TH-24	30
	TH-25	30
	TH-26	30
	TH-27	30
	TH-28	30
	TH-29	30
	TH-30	30
	AB-1	15
	AB-2	15
	AB-3	15
	AB-4	15
	AB-5	15
	AB-6	15
	AB-7	15
10/22/15. TH Total: 1, CPT Total: 10	TH-3WB	200
	CPT-1	145
	CPT-2	70
	CPT-3	70
	CPT-4	70
	CPT-5	70
	CPT-6	100
	CPT-7	120
	CPT-8	140
	CPT-9	135
	CPT-10	130

Geotechnical Engineering – Due Diligence

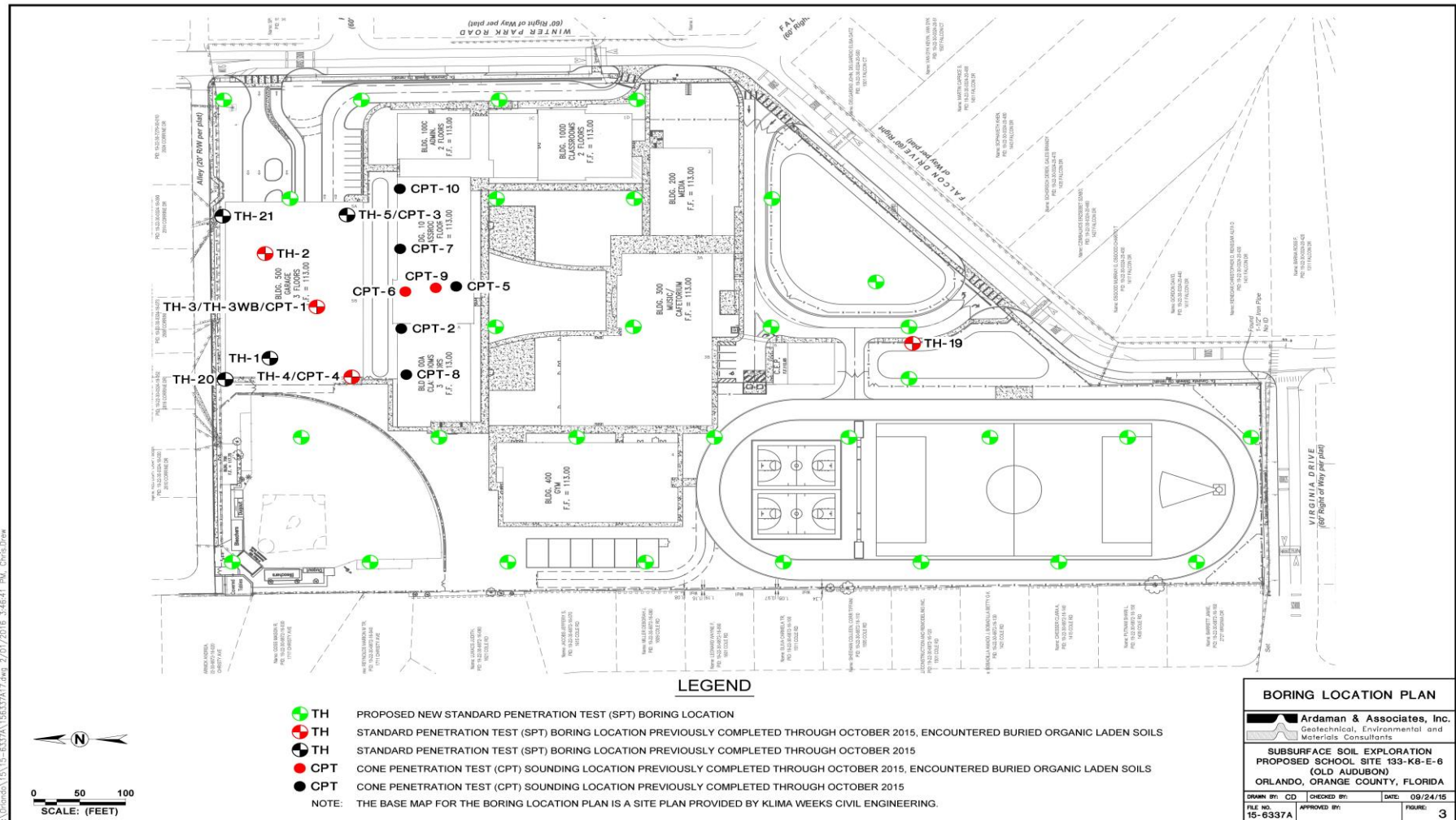
- Preliminary Geotechnical Evaluation (Report – May 2015)
- Design Level Interim Evaluation (Reports – September & October 2015)
- Final Report – December 2015
- Findings – Unsuitable Soil Condition for Building Loads (North Side of the Property)

Geotechnical Engineering – Due Diligence



Additional Geotechnical Due Diligence

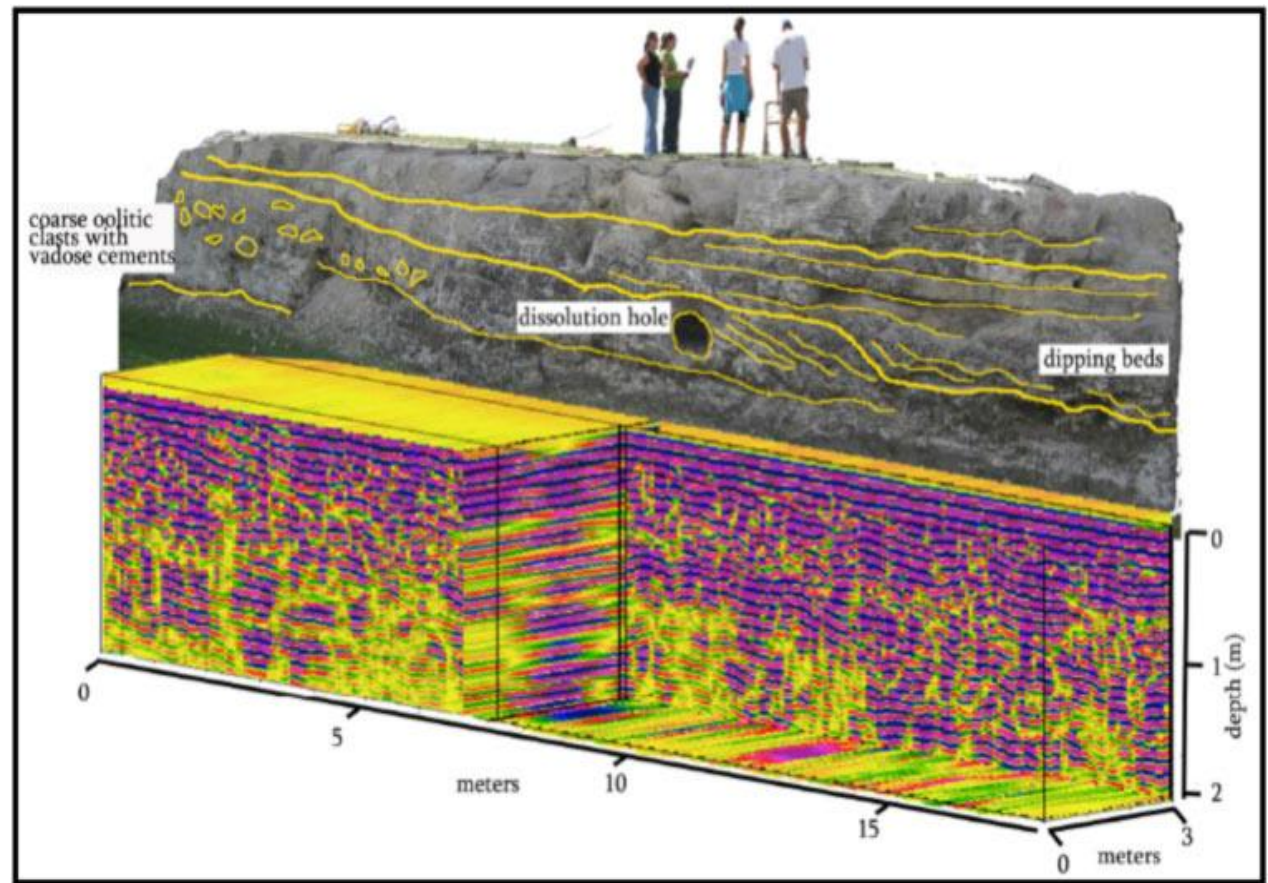
- Additional Borings



Additional Geotechnical Due Diligence

- Ground Penetrating Radar

Ground-penetrating radar (GPR) is a nondestructive geophysical method that uses radar pulses to image the subsurface.



Moving Forward

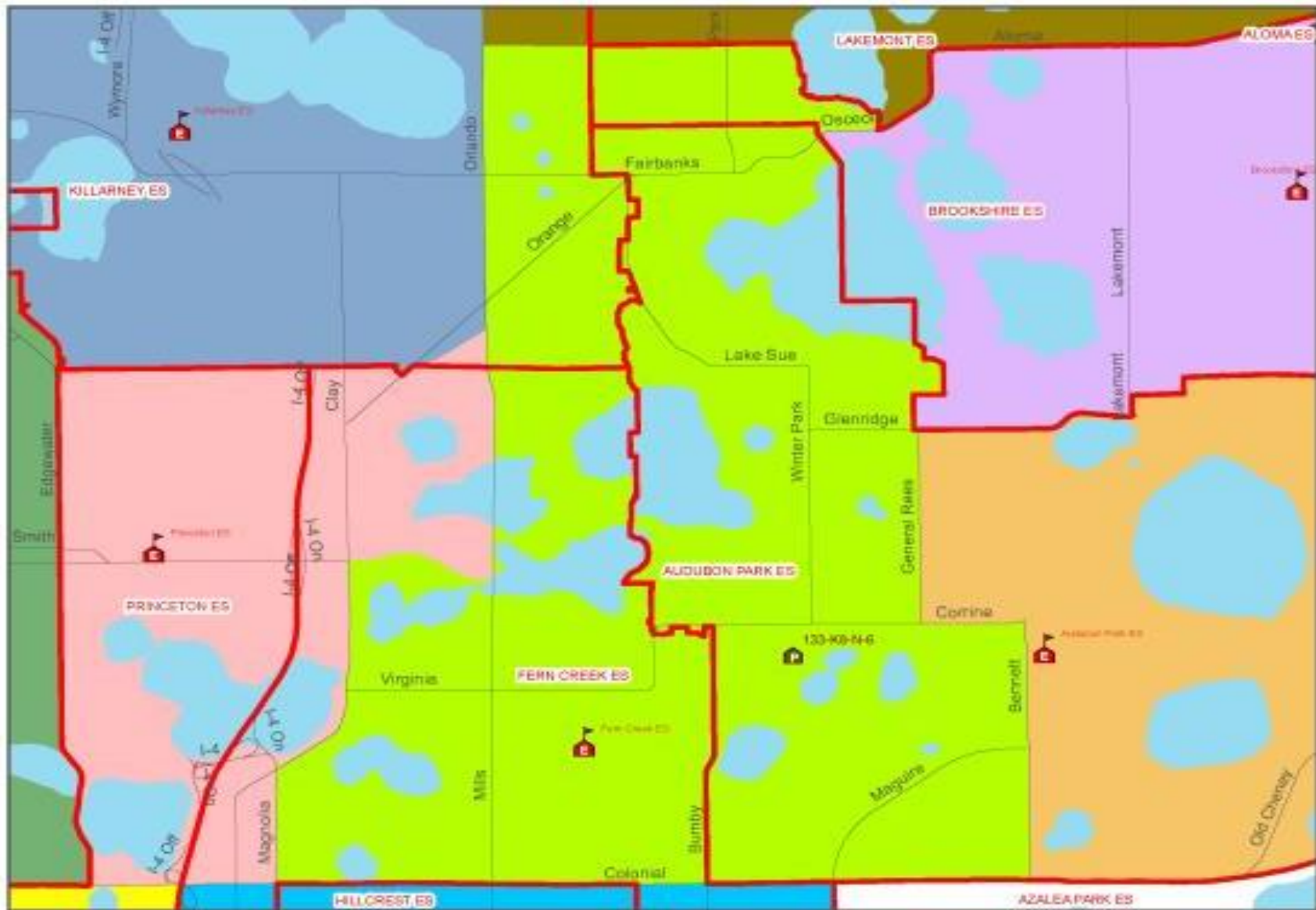
Based on the additional Due Diligence

- Consider Site Plan Redesign Options
- Consider Soil Improvement Options

Orange County Public Schools

Activity	Completion Date
Demolition – Notice to Proceed	01/28/2016
Demolition of Existing Structures	03/18/2016
Additional Subsurface Soil Exploration & GPR	04/15/2016
Redesign Site Plan & Approvals	08/30/2016
Procure Construction Contract (Bid Day)	10/11/2016
Construction – Notice to Proceed	Early 2017
Construction – Substantial Completion	Summer of 2018

Student Enrollment



Schools for 2017-18

Current	2017-18
Audubon Park ES	Audubon Park ES
Brookshire ES	Brookshire ES
Killarney ES zoned to 133-K8-N-6	Killarney ES
Killarney ES zoned to Lakemont ES	Lakemont ES
Fern Creek zoned to 133-K8-N-6	Princeton ES
Current Middle School	Current Middle School

