

Community Meeting

Rezoning Spring 2020

Office of Student Enrollment

March 4, 2020



**Orange County
Public Schools**

Rezoning Process

School Board Policy -JC

Steps 1-4

- Superintendent commences rezoning
- Calendar (Timeline) developed
- Meet with principals, area superintendents and school board members
- Research and data collection

Rezoning Process

School Board Policy -JC

Steps 5 - 8

- Community Meeting(s)
- Rule Development Workshop
- Public Hearing
- Rezoning Notebook

Rezoning Timeline

Date	Event	Time
March 4, 2020	Community Meeting	6:30 p.m.
April 7, 2020	School Board Rule Development Workshop	4:30 p.m.
May 12, 2020	School Board Meeting – Public Hearing	5:30 p.m.

Rezoning Types

Technical	Targeted	Relief School
<ul style="list-style-type: none">• Generally uninhabited property• No students involved	<ul style="list-style-type: none">• Affects a small area• Limited number of students involved	<ul style="list-style-type: none">• Opening of a new school• Affects a large area• Affects a large number of students

Relief School Naming Convention

43-E-SE-2

Real estate property number



School type: Elementary

Learning Community: Southeast

Board member district

Grandfathered Transfer

A Grandfathered Transfer is available

- for a student who has been rezoned by OCPS two or more times during a school level (K-5, 6-8, 9-12) at the current address or
- who has been rezoned from an established school to another established school. In this case, the student may remain at the existing school instead of being assigned to the rezoned school or
- rezoned for the 5th or 8th grade year

Grandfathered Transfer

The following shall apply to Grandfathered Transfers:

- Transportation is not provided by OCPS
- There is no transfer eligibility for siblings who do not meet the same criteria for a Grandfathered Transfer

Rezoning on OCPS Website

www.ocps.net

- Newcomers
- How to Enroll
- School Rezoning
- Rezoning Initiatives



Rezoning on OCPS Website



[School Rezonings](#)

➤ [Rezoning Initiatives](#)

➤ [Zones-Board
Approved](#)

[Orange County Public Schools](#) / [Departments](#) / [Student Enrollment](#) / [School
Rezonings](#) / [Rezoning Initiatives](#)



Rezoning Initiatives

[Elementary Schools](#)



[Middle Schools](#)



[K-8 Schools](#)



[High Schools](#)



All visits to Student Enrollment are
by appointment only.



or call 407-317-3233 to make an
appointment

If the calendar date is not in

Community Input

Electronic Community Survey Input

Rezoning	Survey Links
Sand Lake Hills	https://arcg.is/Sr4rb
Sand Lake – Bay Meadows	https://arcg.is/1DeWzm
Wintermere Pointe and Emerald Ridge	https://arcg.is/a9PCS
43-E-SE-2	https://arcg.is/1OW0e4
80-H-SW-4	https://arcg.is/a0LWC0
113-H-W-4	https://arcg.is/5TKjm
65-M-W-4	https://arcg.is/1Trn5L

By Friday, April 3rd

Community Input

Community Input by e-mail:

carol.mcgowin@ocps.net

Must include your name and address

By Friday, April 3rd

One preference/input per household

Community Input

Petitions

Must include your name and address

Received in the Office of Student Enrollment

By 4:30 PM Friday, April 3rd

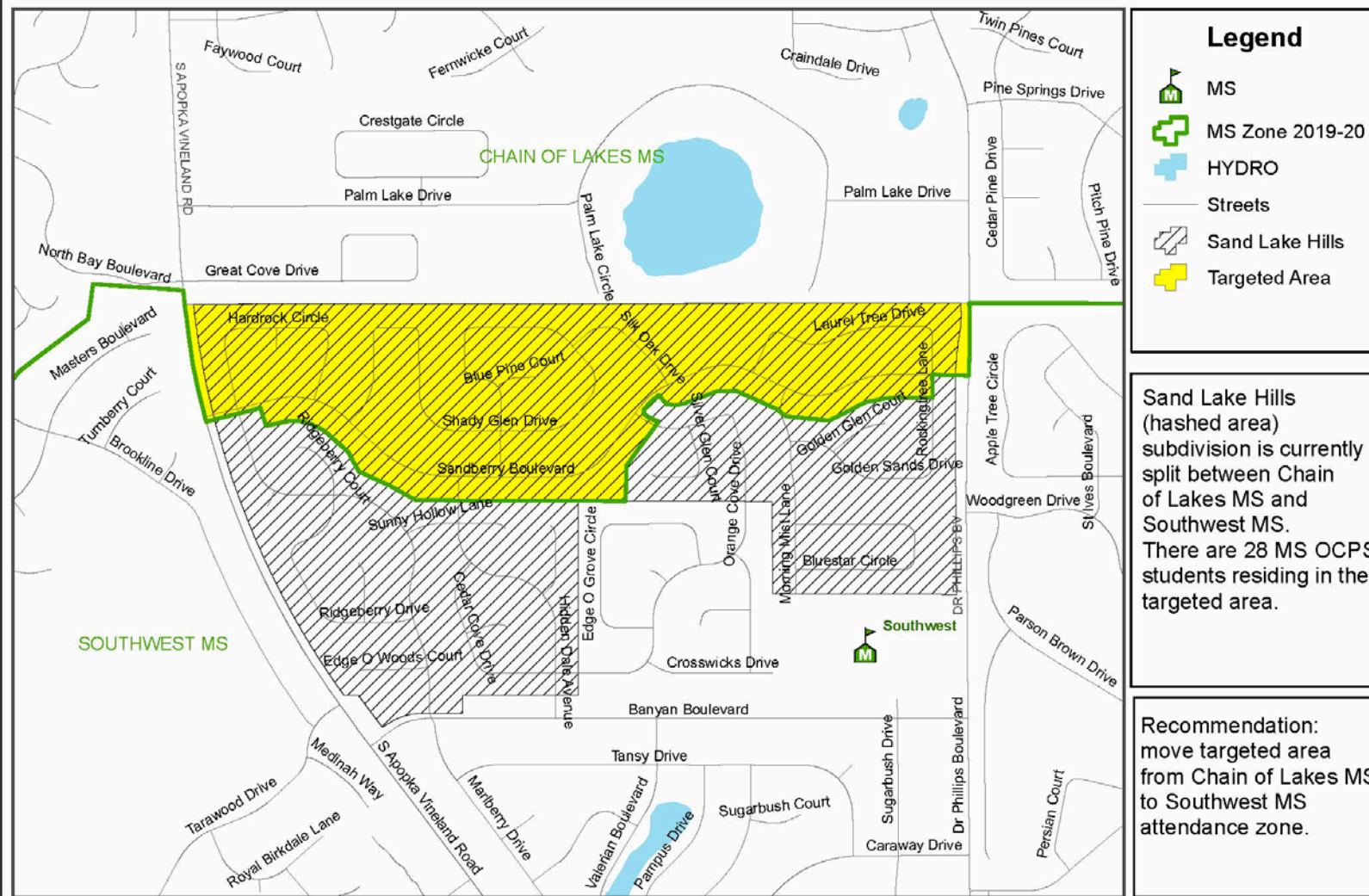
One preference/input per household

Targeted Rezoning

Sand Lake Hills

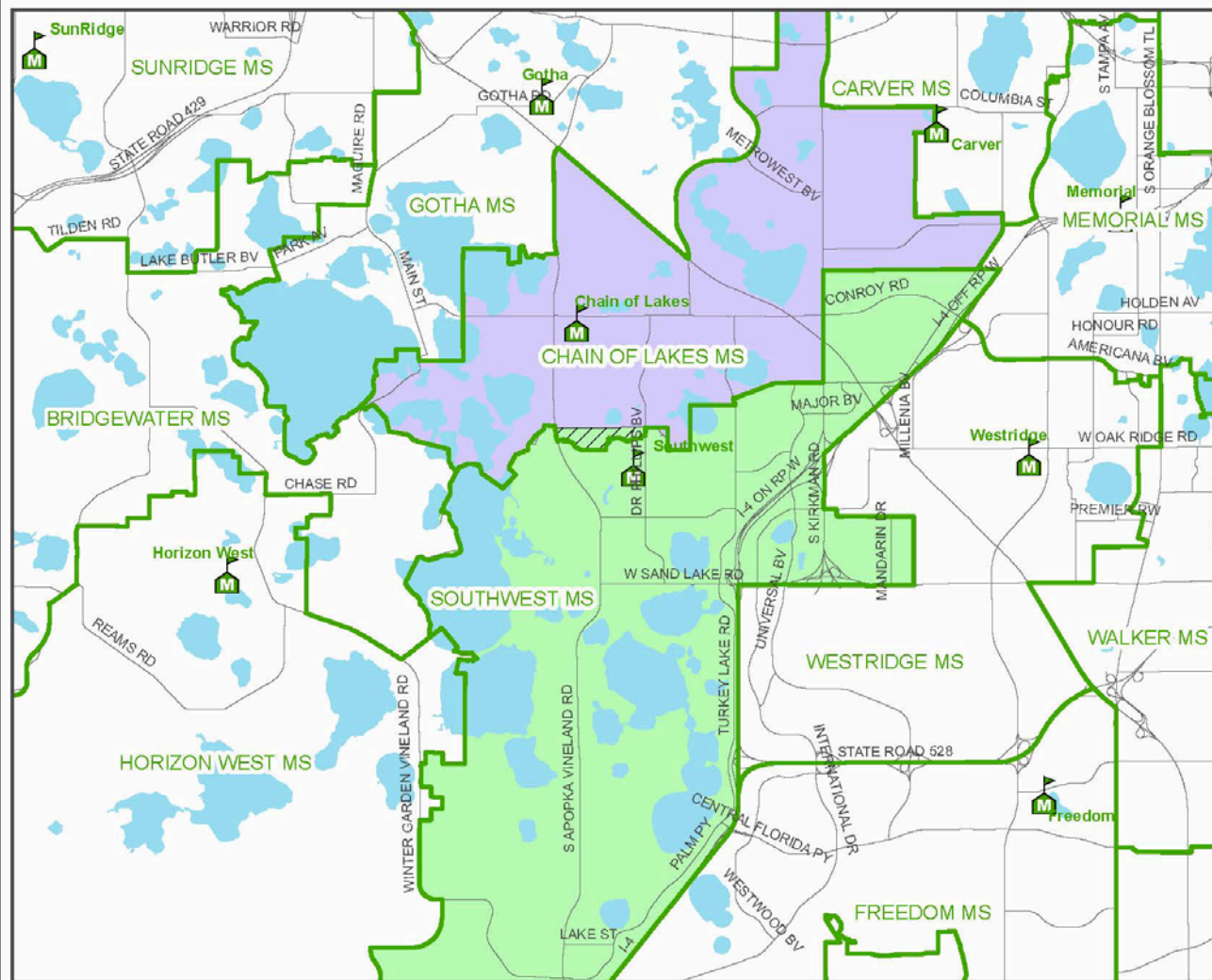


Targeted Rezoning - Sand Lake Hills





Targeted Rezoning - Sand Lake Hills



Legend

- MS
- MS Zone 2019-20
- HYDRO
- Targeted Area
- Proposed**
- Chain of Lakes MS
- Southwest MS

Sand Lake Hills subdivision is currently split between Chain of Lakes MS and Southwest MS. There are 28 MS OCPS students residing in the targeted area.

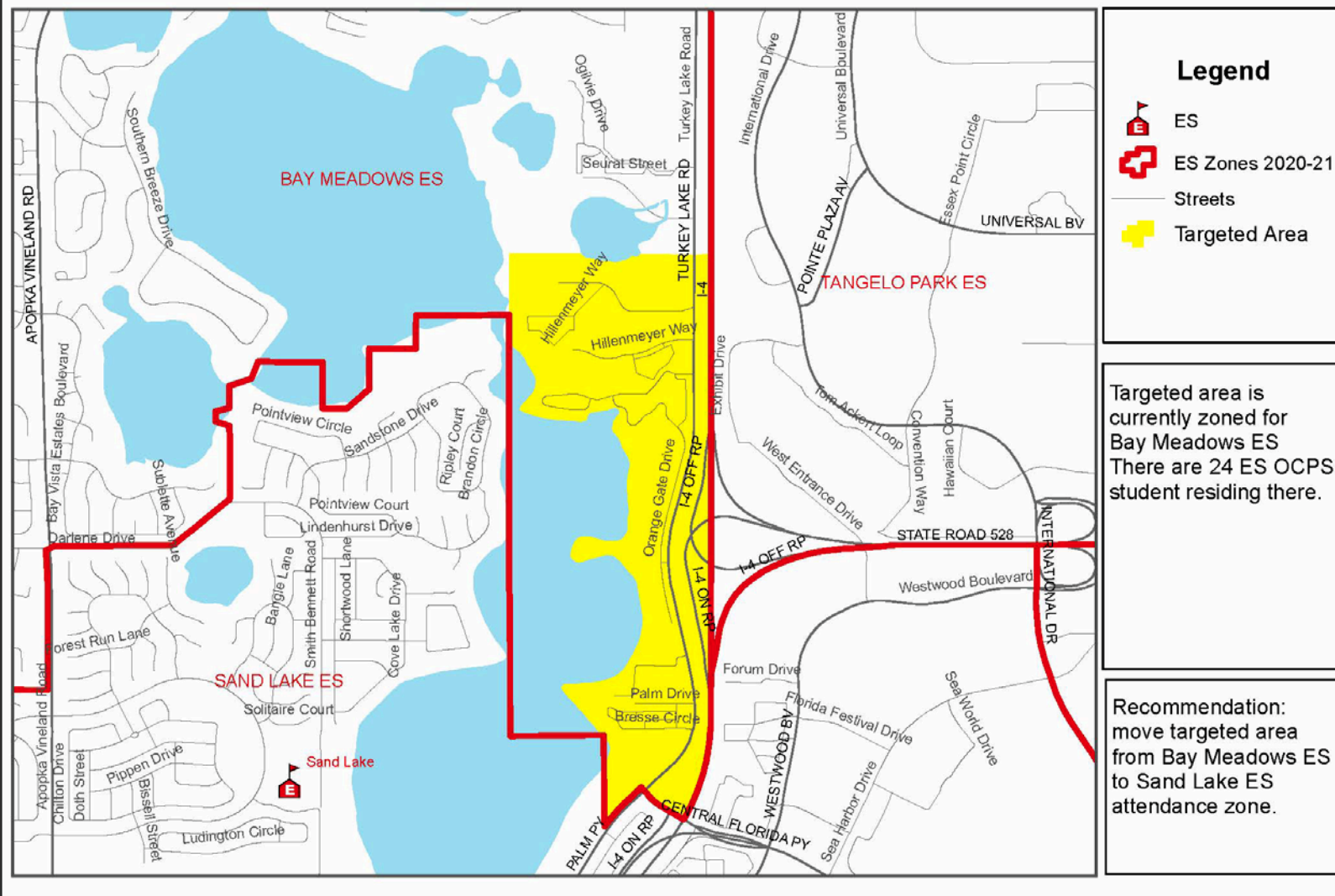
Recommendation: move targeted area from Chain of Lakes MS to Southwest MS attendance zone.

Targeted Rezoning

Sand Lake – Bay Meadows

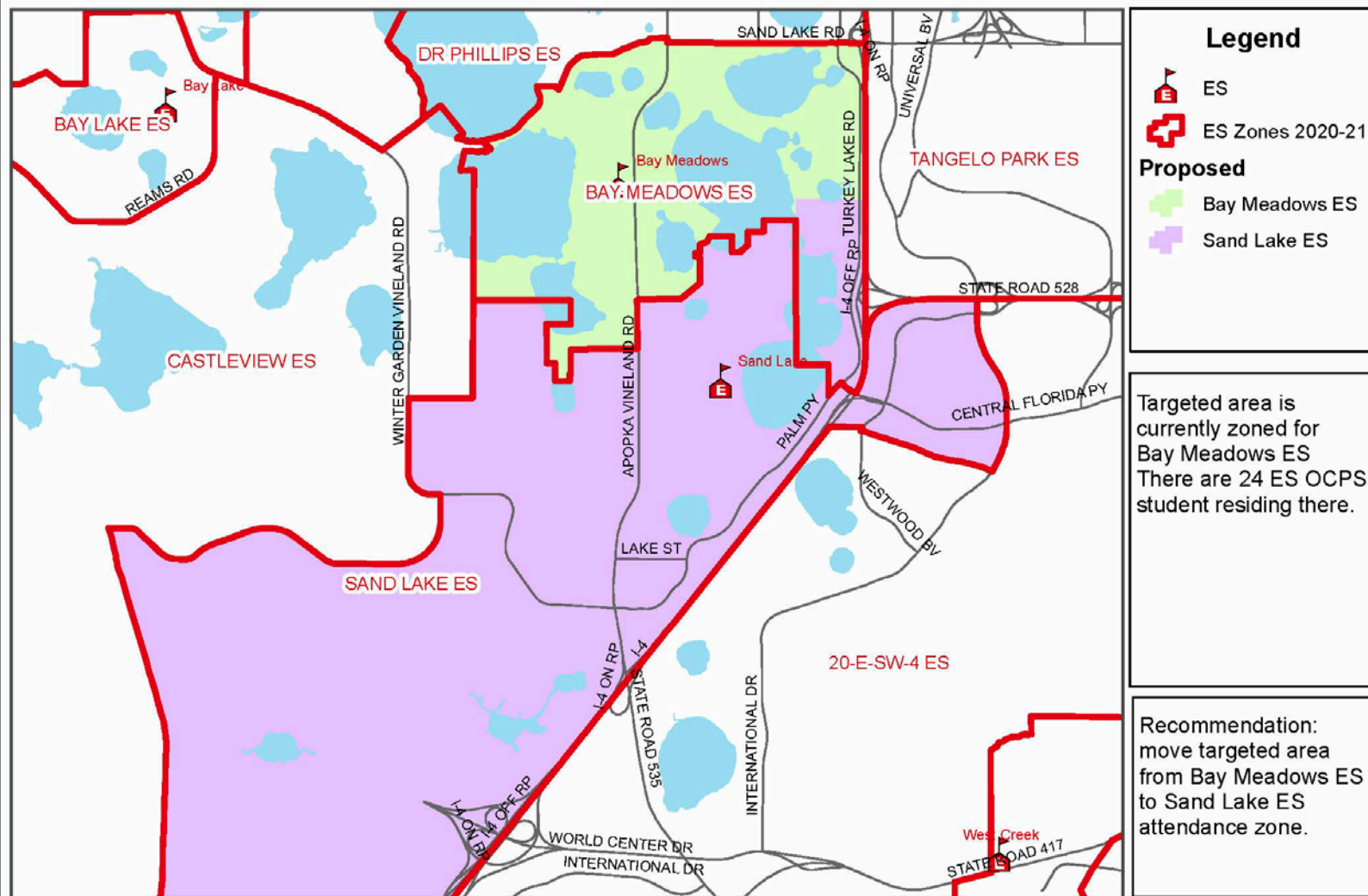


Targeted Rezoning - Sand Lake ES - Bay Meadows ES





Targeted Rezoning - Sand Lake ES - Bay Meadows ES

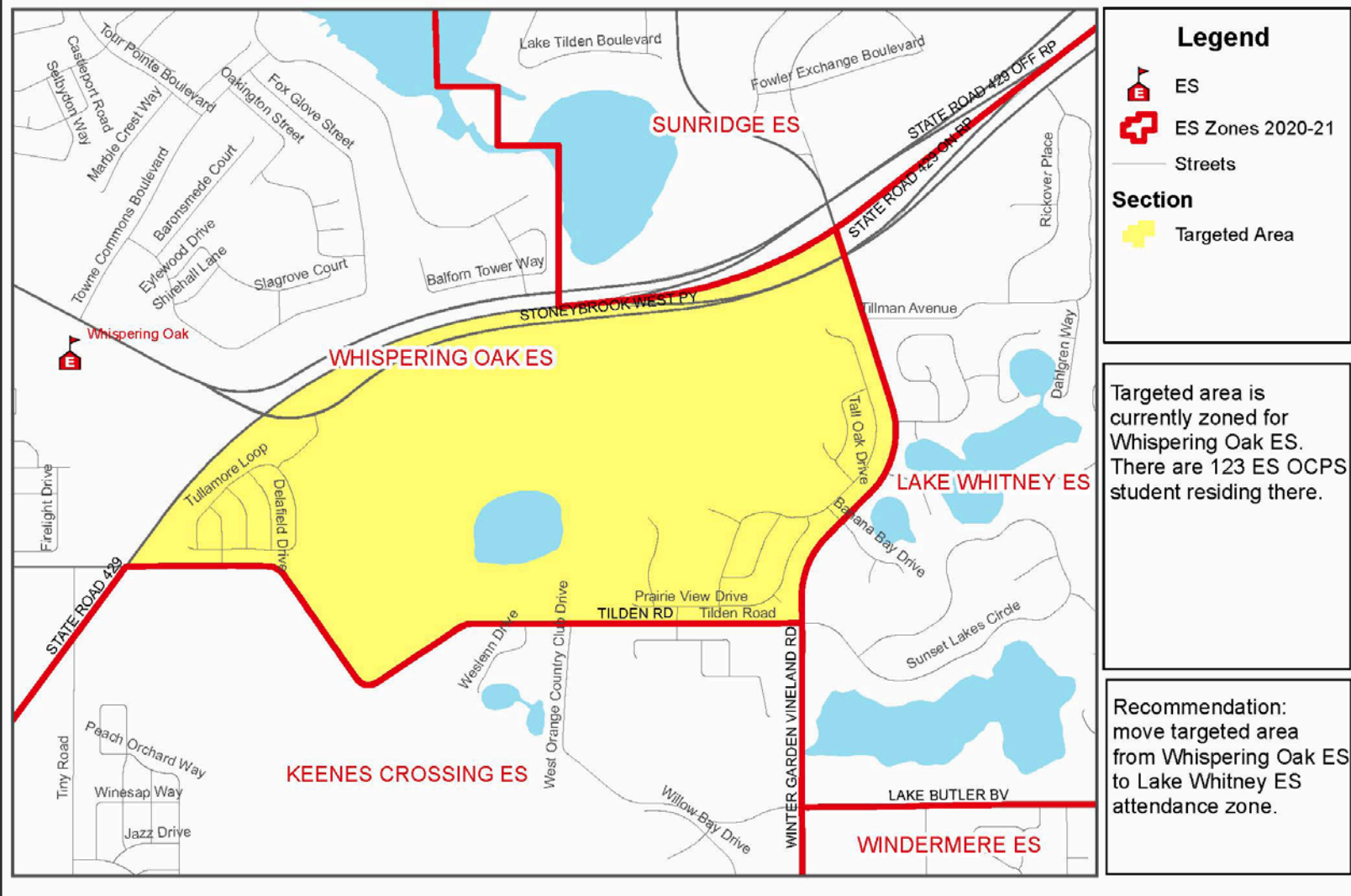


Targeted Rezoning

Wintermere Pointe and Emerald Ridge

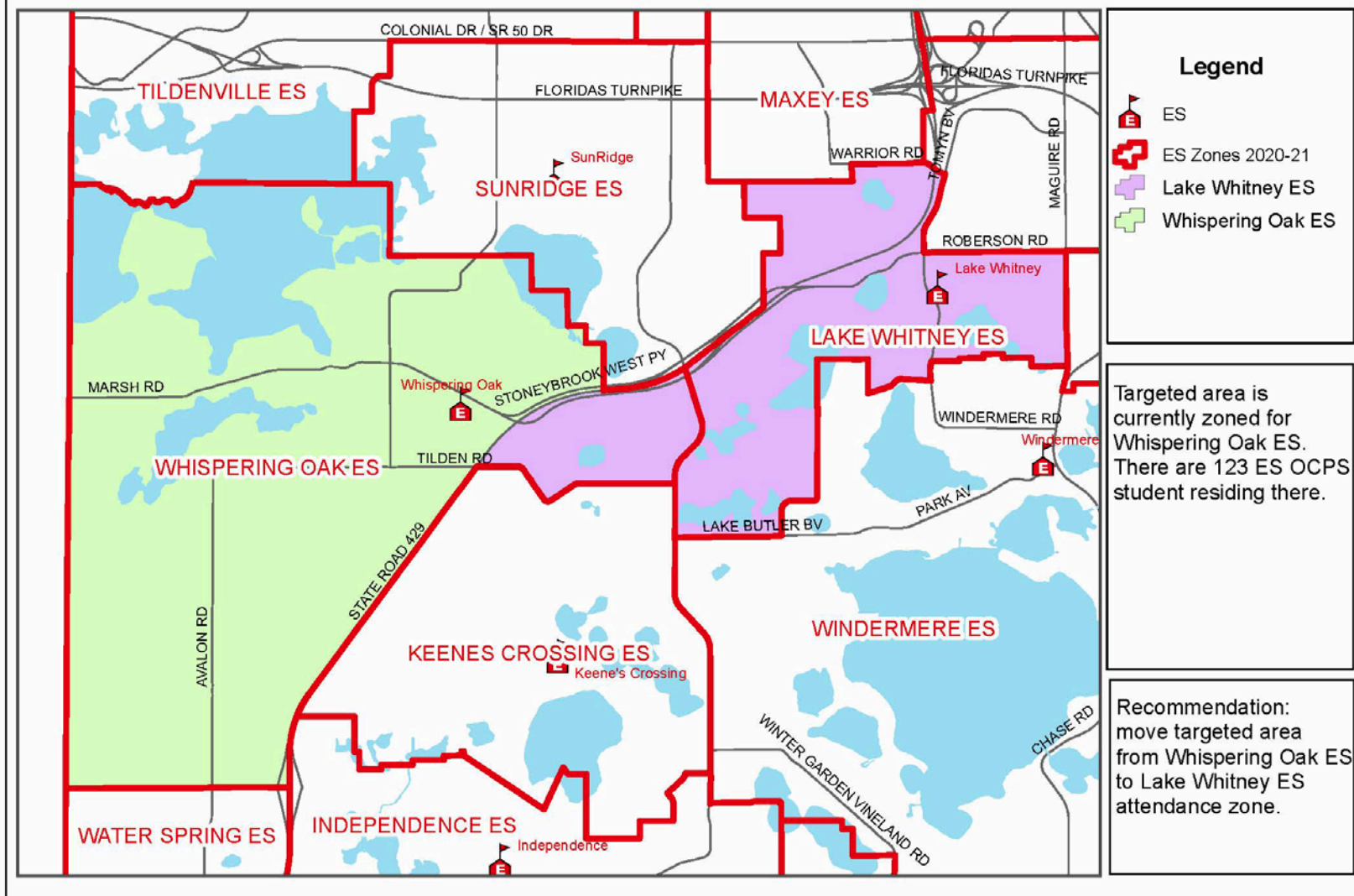


Targeted Rezoning - Wintermere Pointe and Emerald Ridge



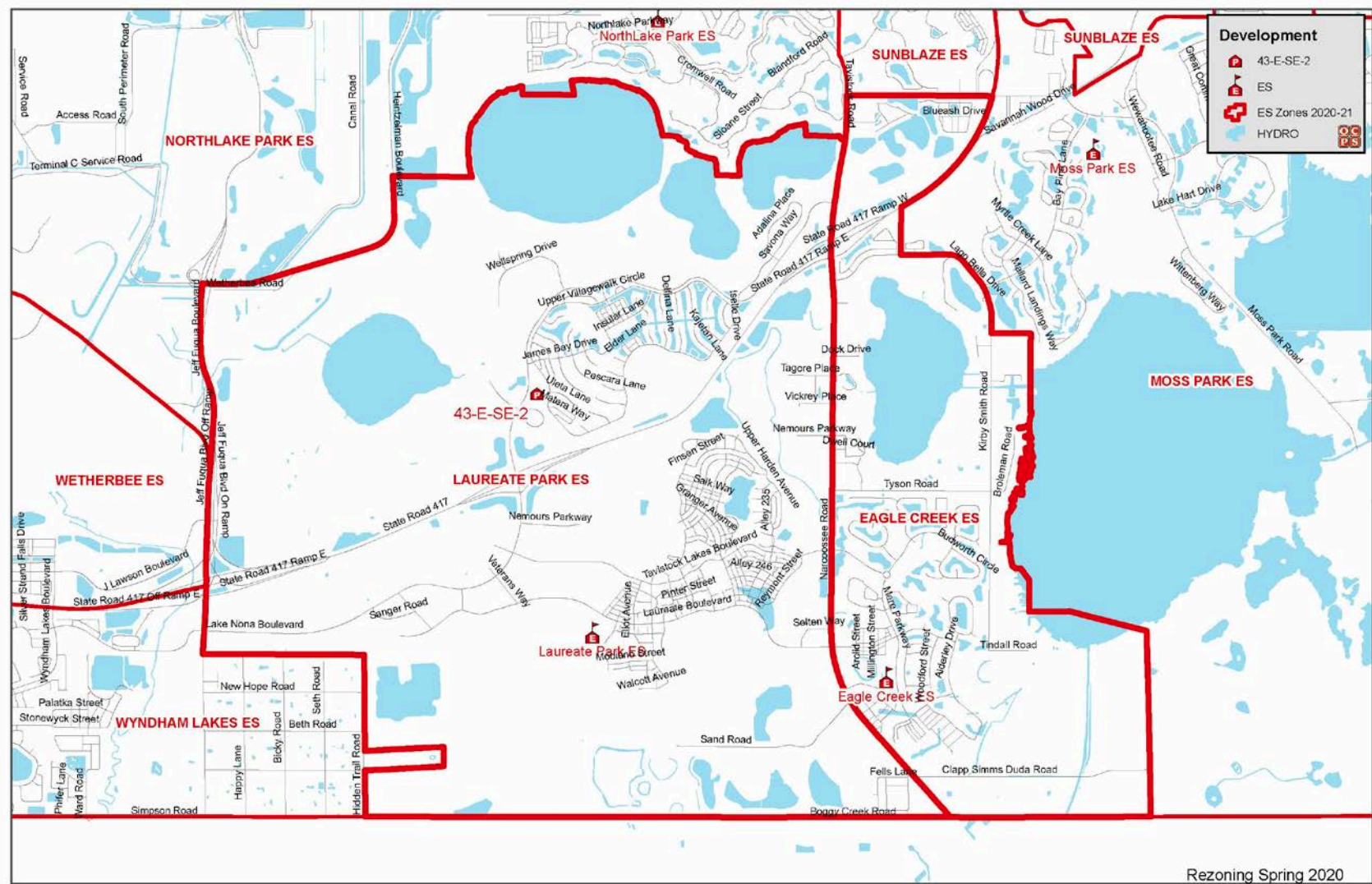


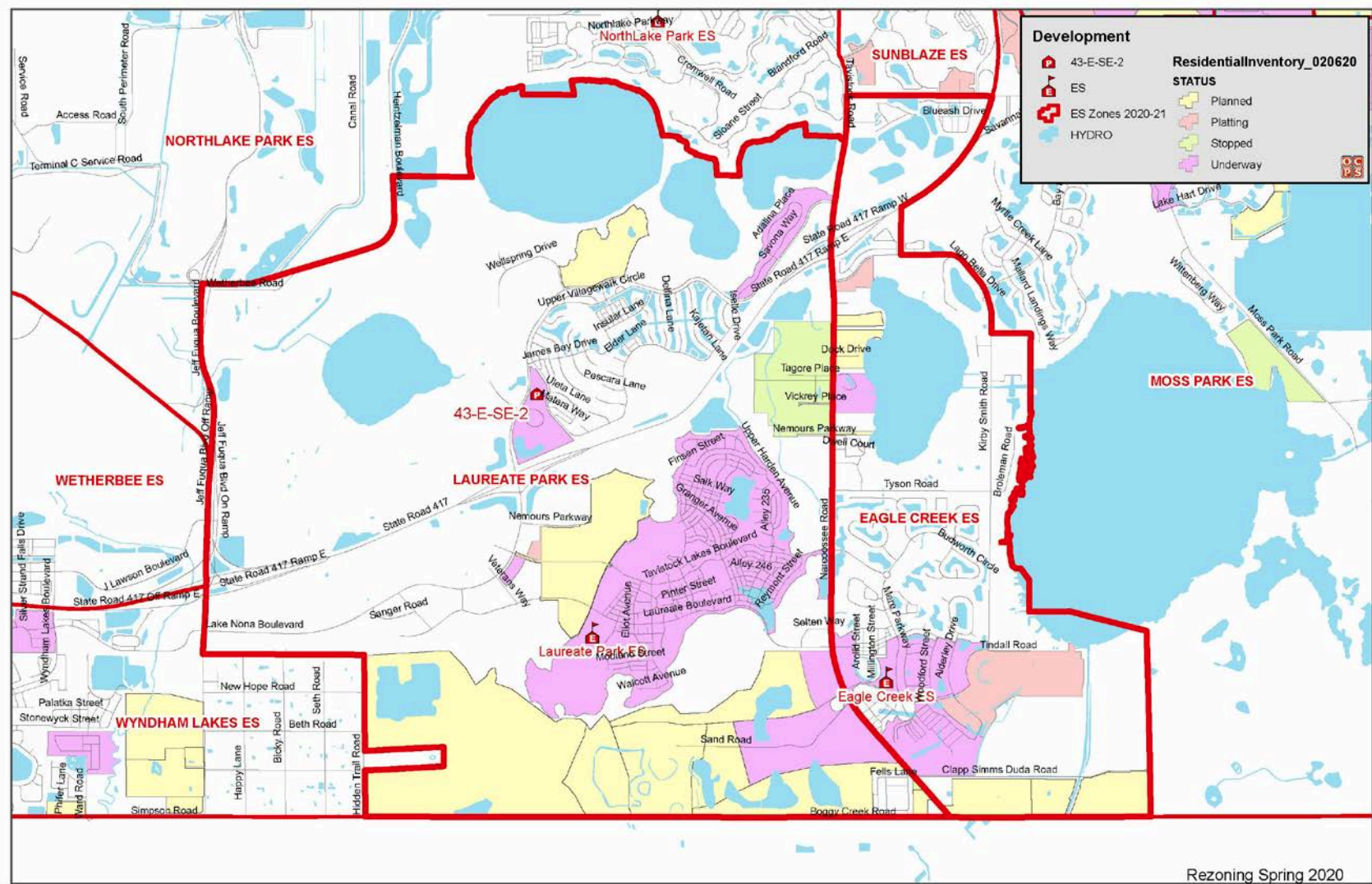
Targeted Rezoning - Wintermere Pointe and Emerald Ridge

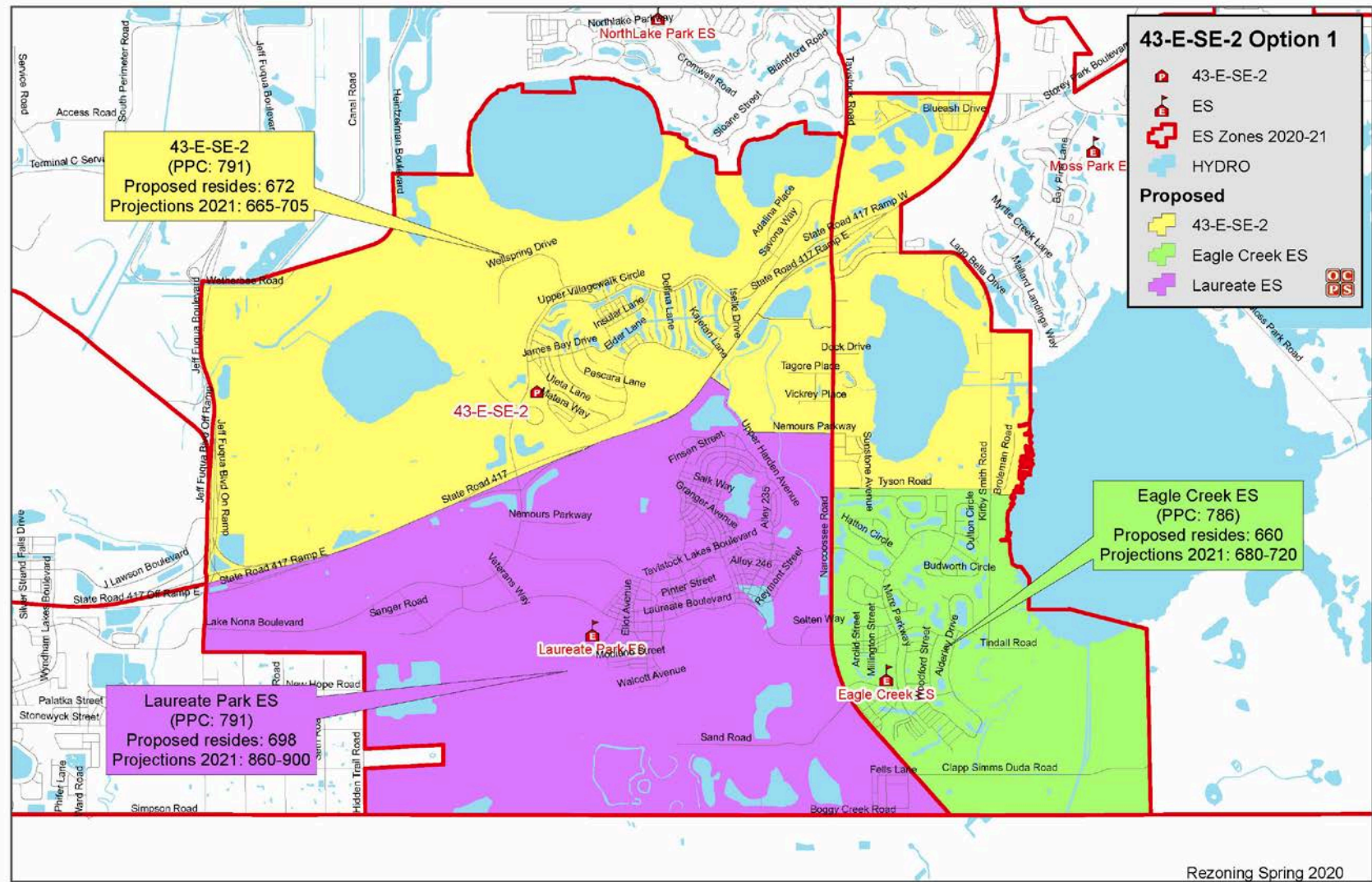


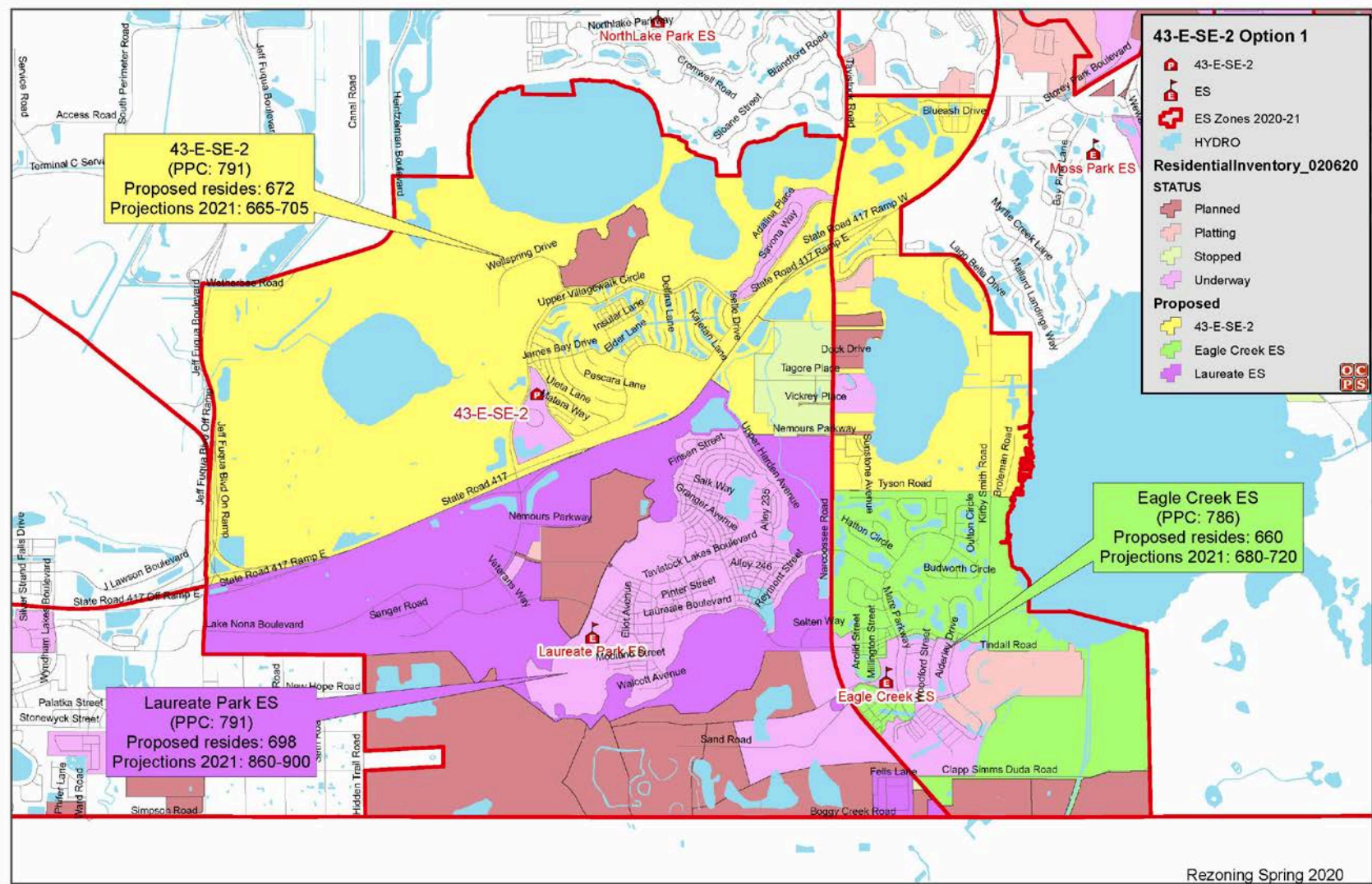
Relief Schools

43-E-SE-2









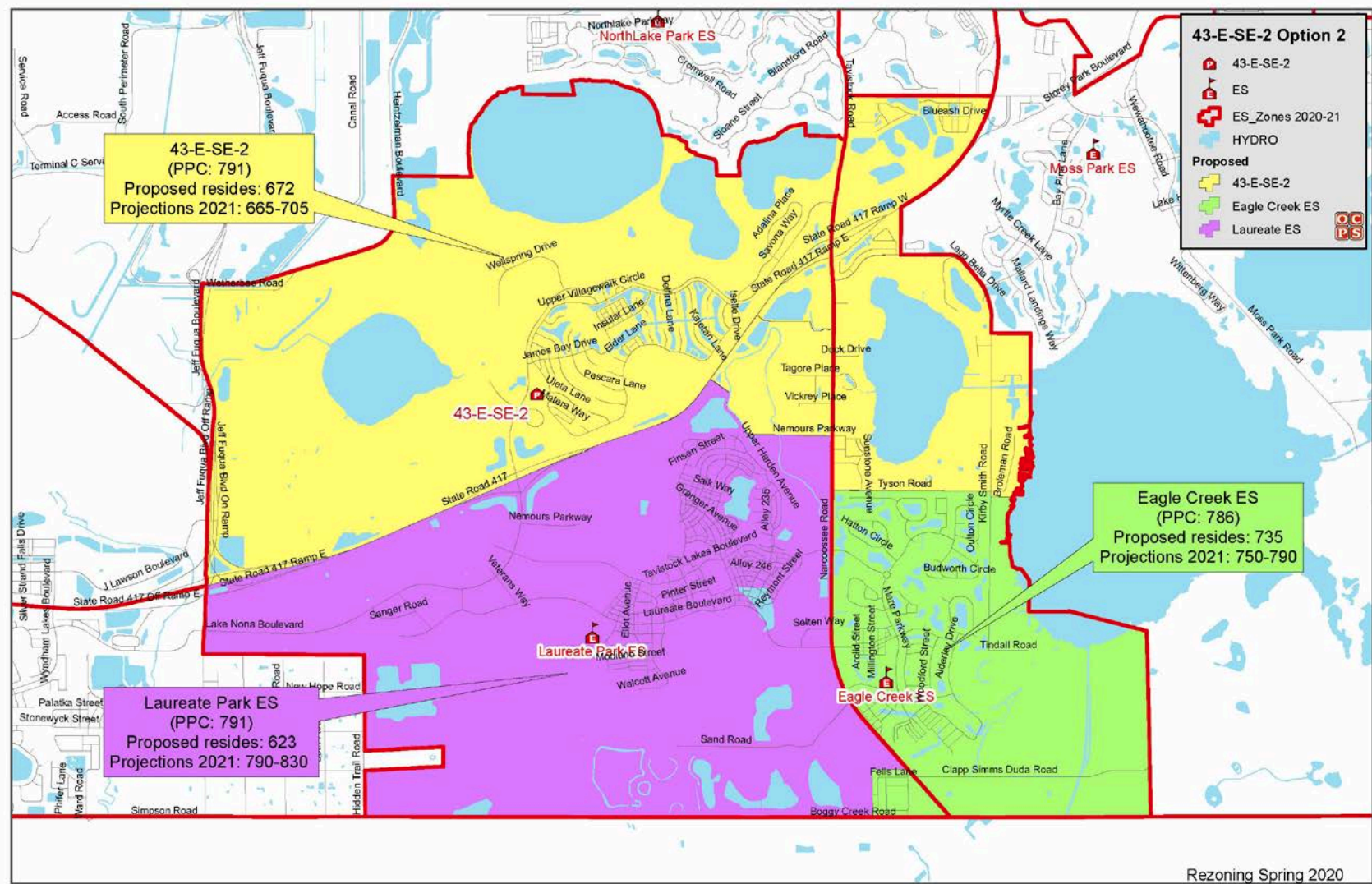


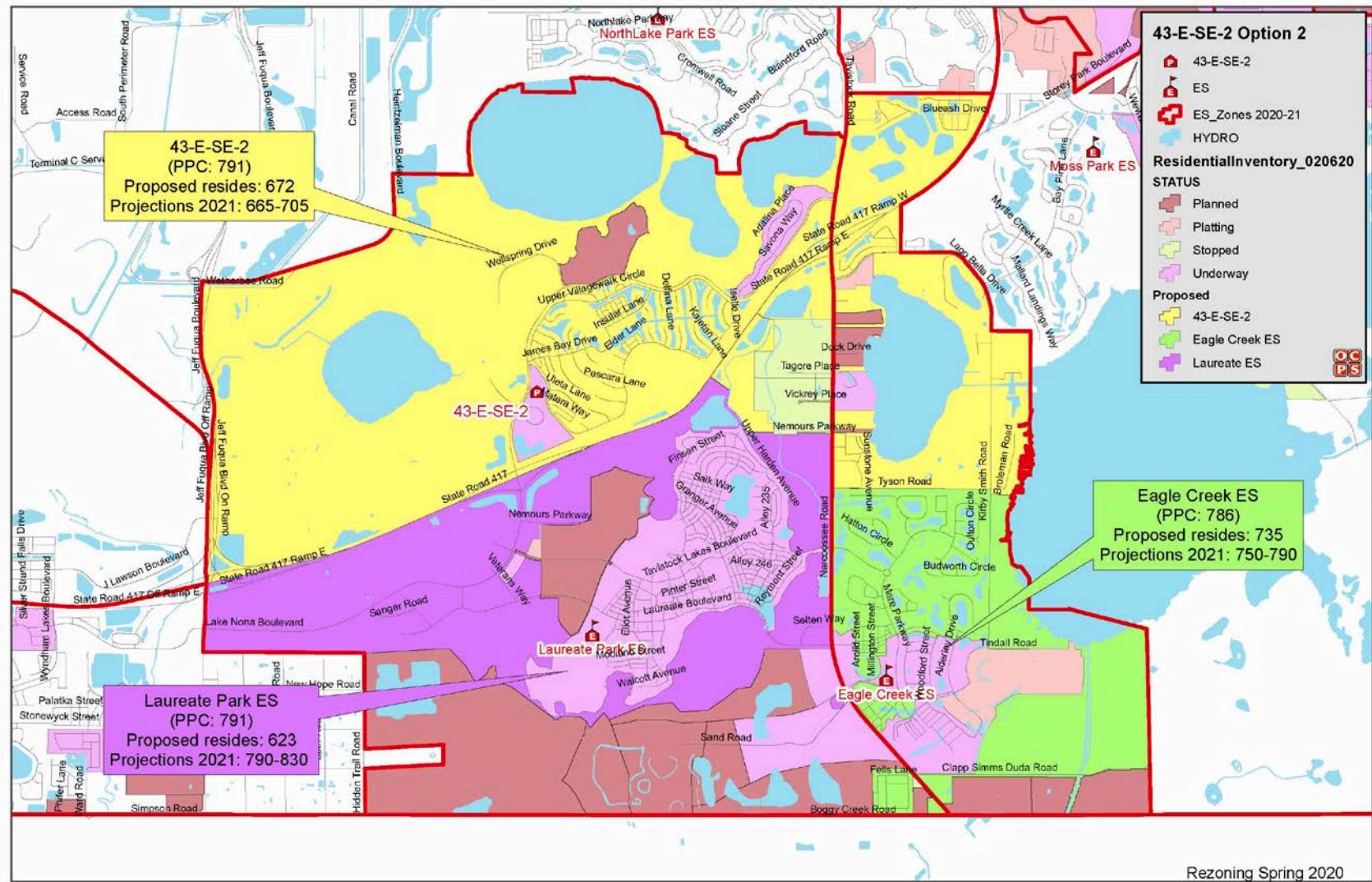
43-E-SE-2 Rezoning Option 1


School (Program Capacity)	Enrollment 11/15/2019 (%W/B/O) (%Non-H/H)	Current Number of Students Residing	Proposed Resides* (%W/B/O) (%Non-H/H) (Projected Students 2021)	FARMS	ESE	ELL
				C: Current P: Proposed	C: Current P: Proposed	C: Current P: Proposed
43-E-SE-2 (791)	N/A	N/A	672 (82/9/9) (34/66) (665-705)	C: N/A P: 38%	C: N/A P: 10%	C: N/A P: 32%
Eagle Creek ES (786)	1,021 (79/9/12) (39/61)	1,043	660 (77/10/13) (47/53) (680-720)	C: 37% P: 30%	C: 8% P: 7%	C: 28% P: 24%
Laureate Park ES (791)	988 (80/6/14) (56/44)	987	698 (80/6/14) (61/39) (860-900)	C: 14% P: 10%	C: 9% P: 9%	C: 14% P: 10%
(2,368)	Total 2,009	Total 2,030	Total 2,030			

FARMS, ESOL, & ESE numbers reflect students currently residing in these school zones

*Geo-coded students for the 2019-20 school year



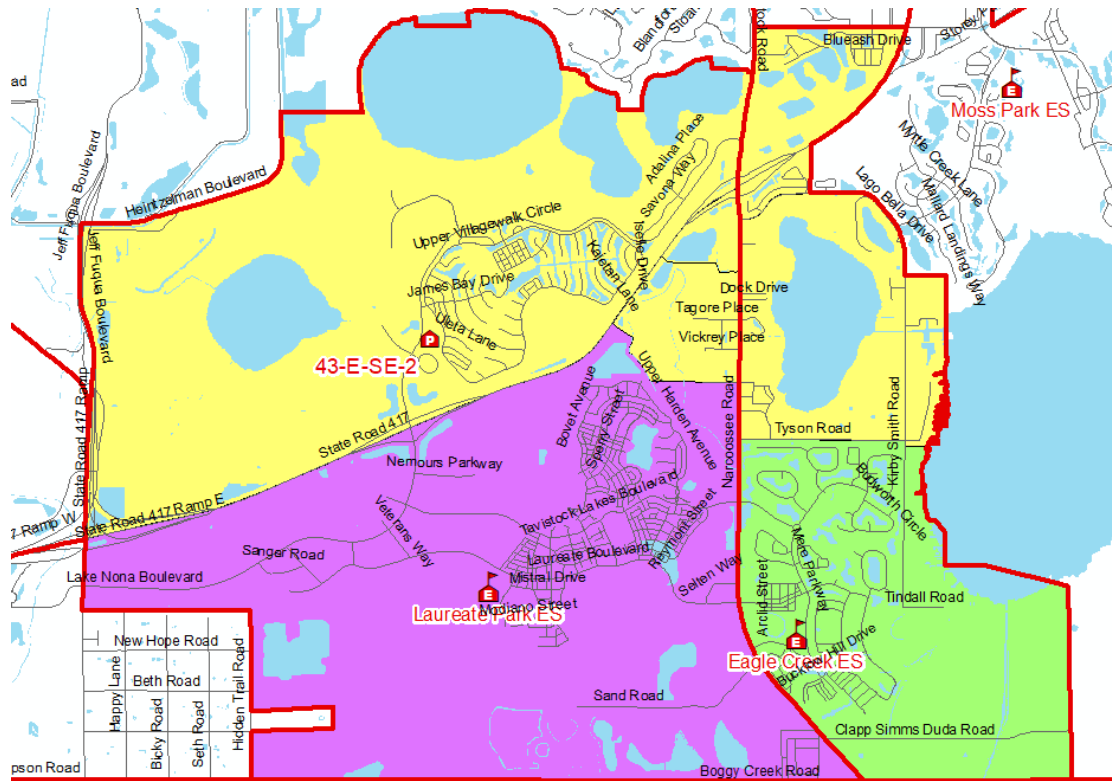


 43-E-SE-2 Rezoning Option 2						
School (Program Capacity)	Enrollment 11/15/2019 (%W/B/O) (%Non-H/H)	Current Number of Students Residing	Proposed Resides* (%W/B/O) (%Non-H/H) (Projected Students 2021)	FARMS	ESE	ELL
				C: Current P: Proposed	C: Current P: Proposed	C: Current P: Proposed
43-E-SE-2 (791)	N/A	N/A	672 (82/9/9) (34/66) (665-705)	C: N/A P: 38%	C: N/A P: 10%	C: N/A P: 32%
Eagle Creek ES (786)	1,021 (79/9/12) (39/61)	1,043	735 (76/9/15) (49/51) (750-790)	C: 37% P: 28%	C: 8% P: 7%	C: 28% P: 21%
Laureate Park ES (791)	988 (80/6/14) (56/44)	987	623 (81/6/13) (60/40) (790-830)	C: 14% P: 9%	C: 9% P: 8%	C: 14% P: 11%
(2,368)	Total 2,009	Total 2,030	Total 2,030			

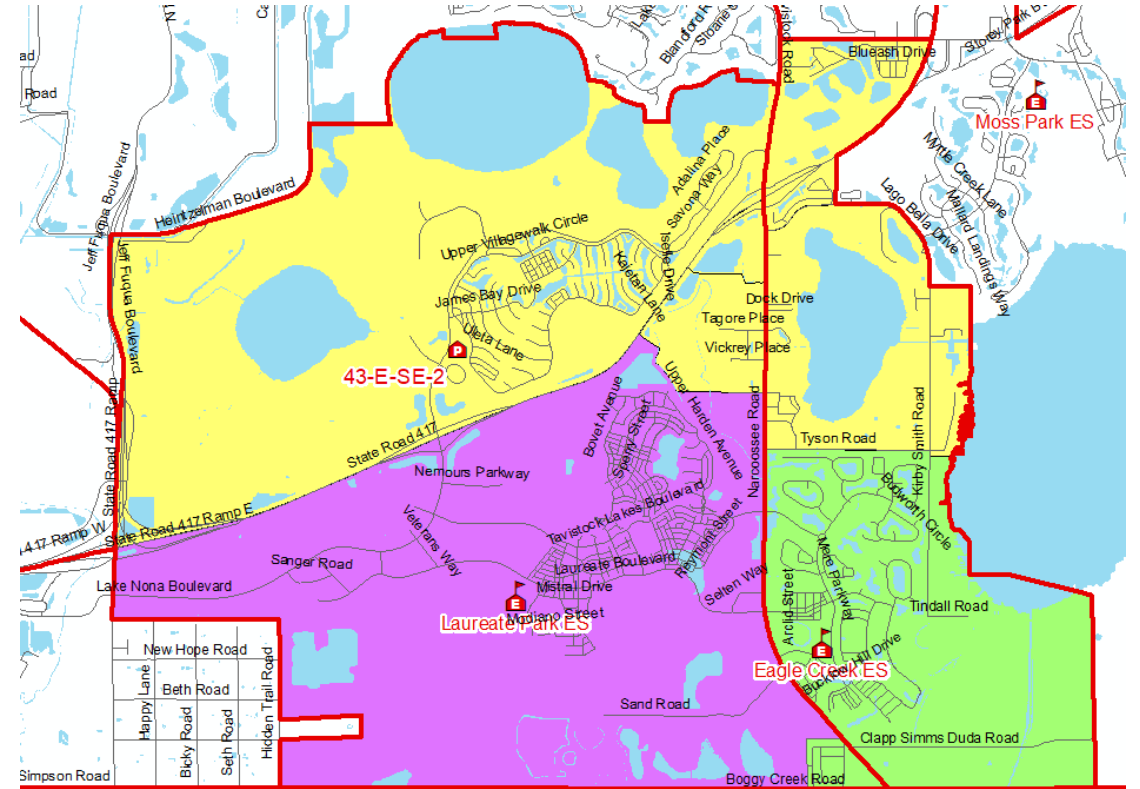
FARMS, ESOL, & ESE numbers reflect students currently residing in these school zones

*Geo-coded students for the 2019-20 school year

Option 1




Option 2



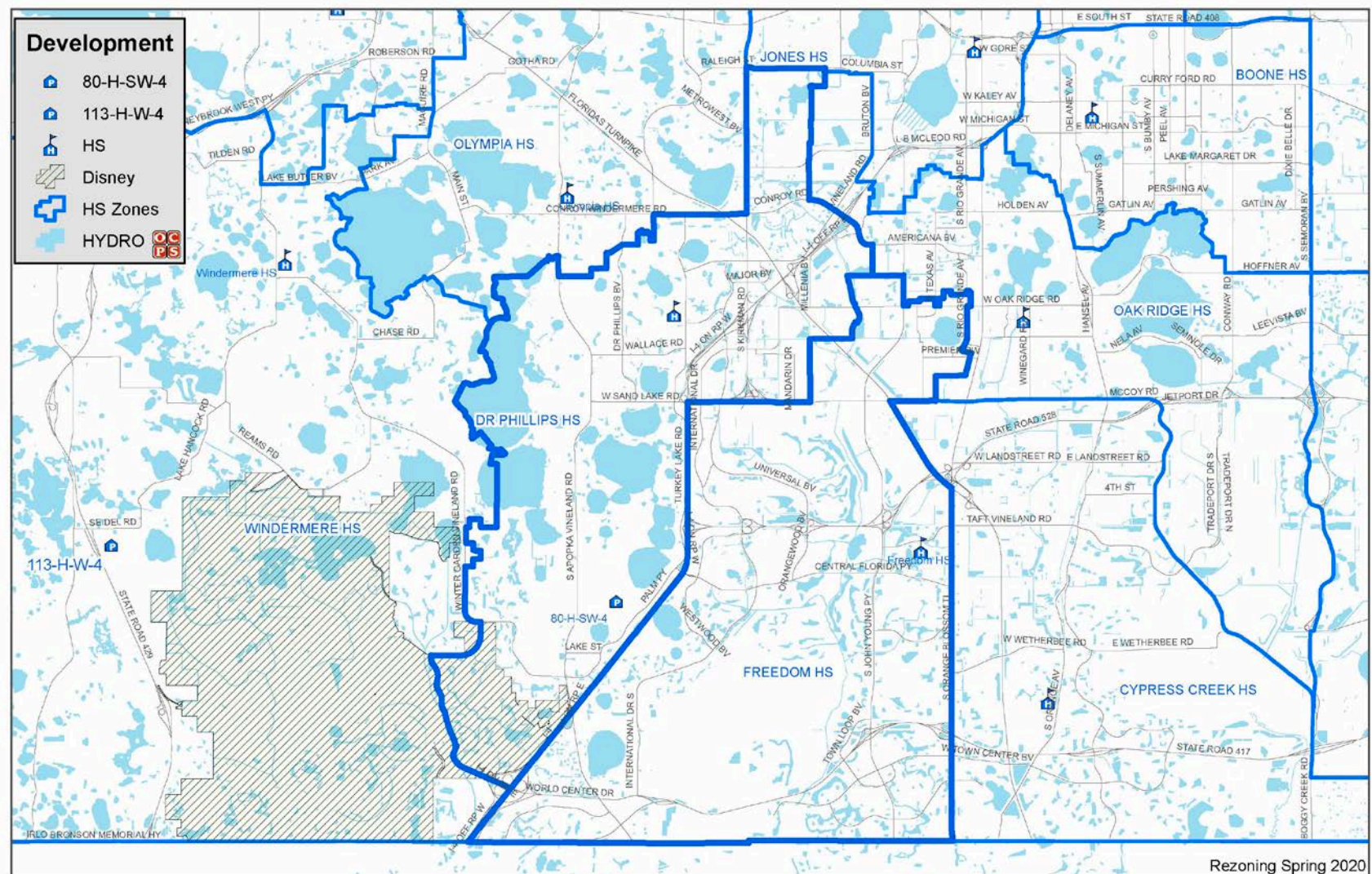
Options Overview

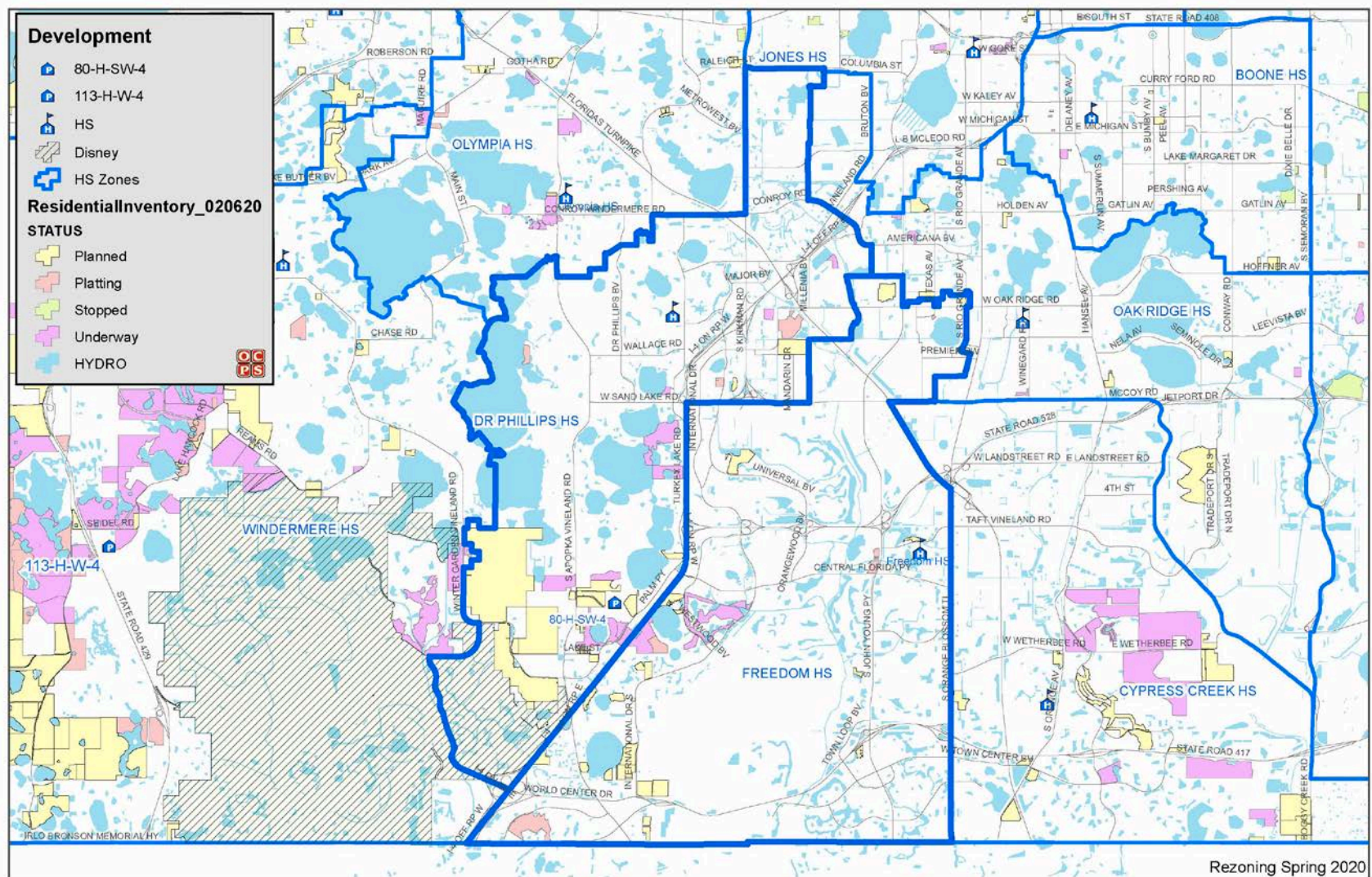
Orange County Public Schools

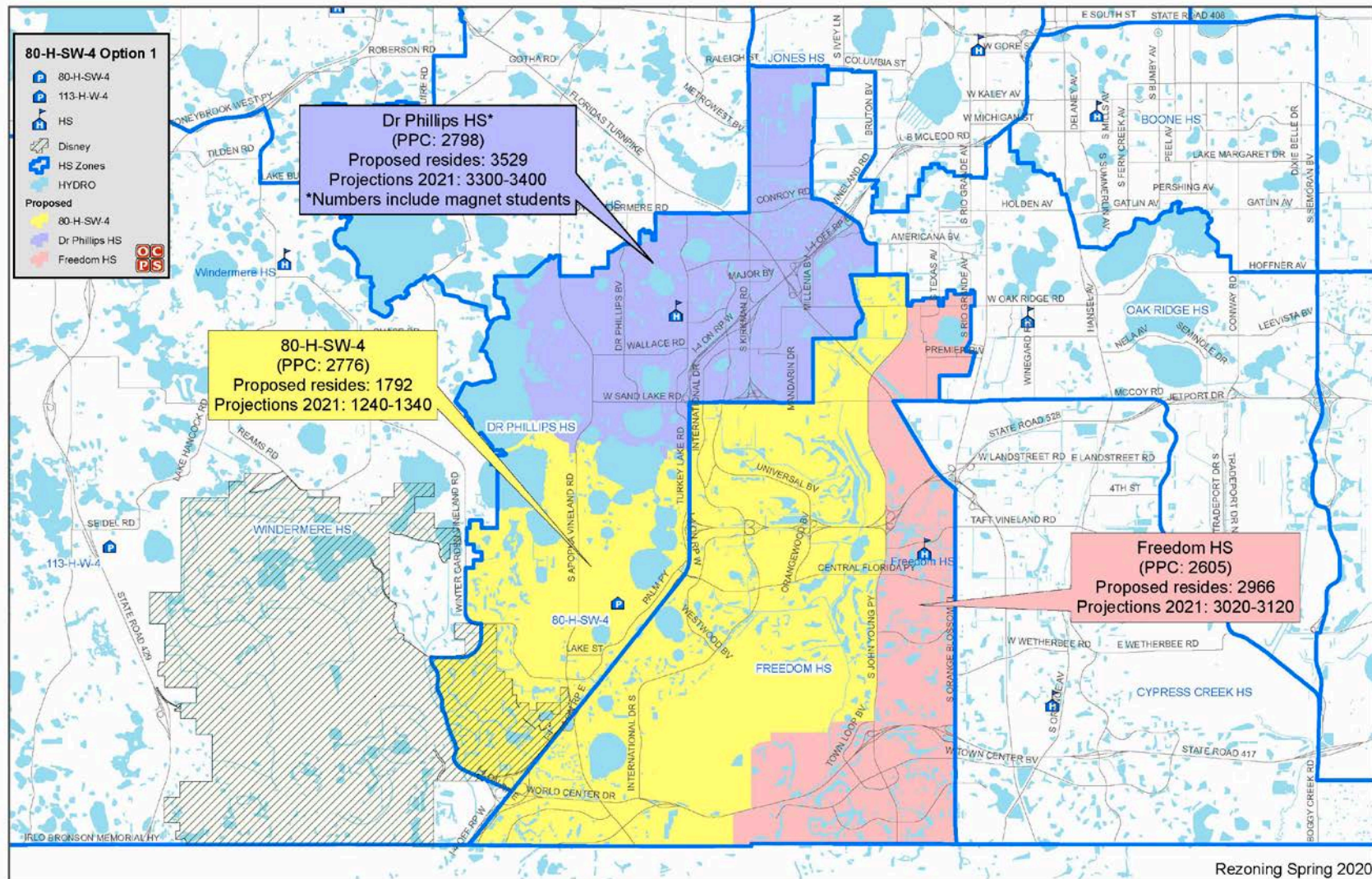
 Options Overview for 43-E-SE-2		
School (Program Capacity)	Option 1	Option 2
	Students residing Students projected 2021	Students residing Students projected 2021
43-E-SE-2 (791)	672 665-705	672 665-705
Eagle Creek ES (786)	660 680-720	735 750-790
Laureate Park ES (791)	698 860-900	623 790-830

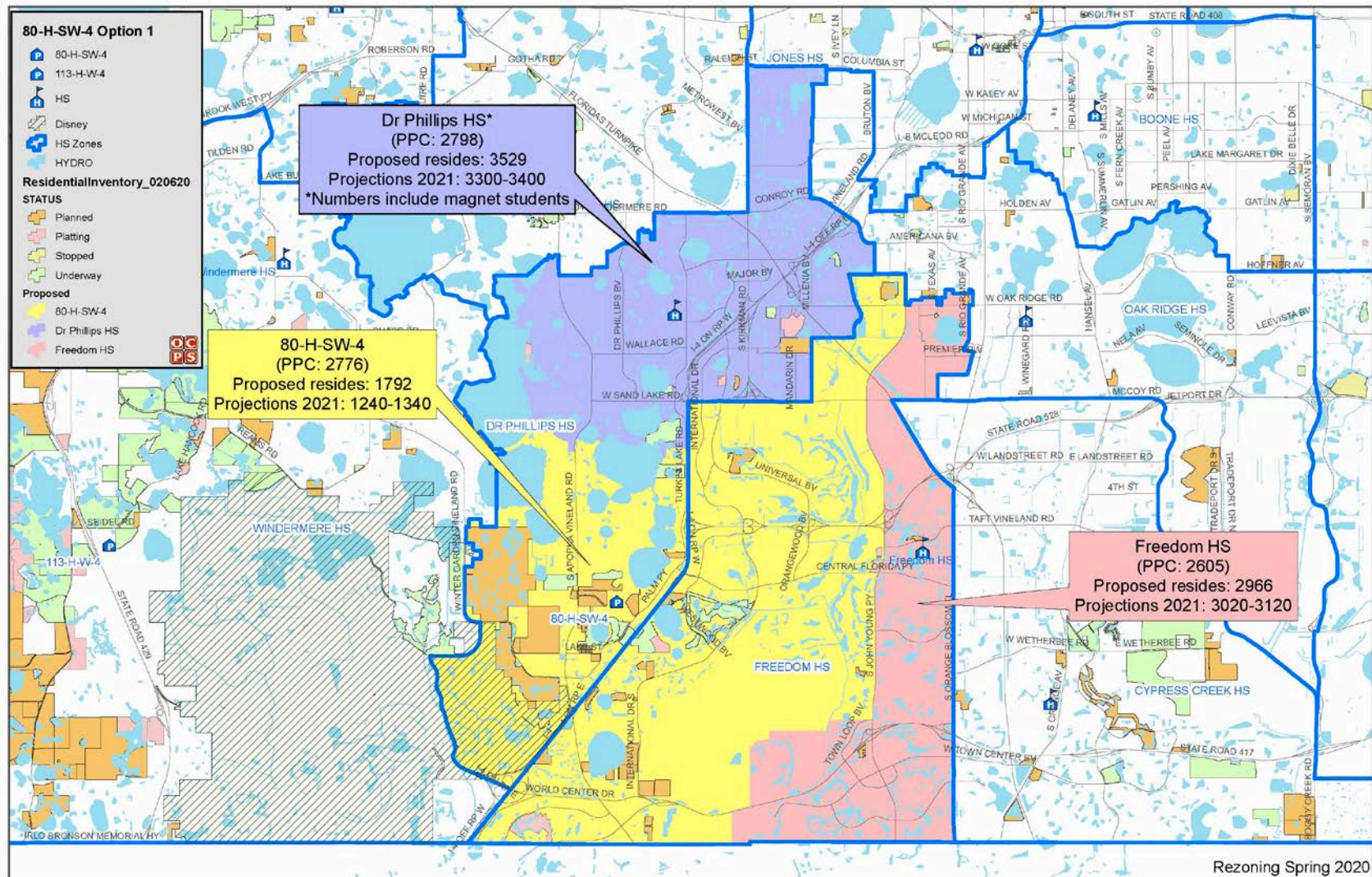
Relief Schools

80-H-SW-4











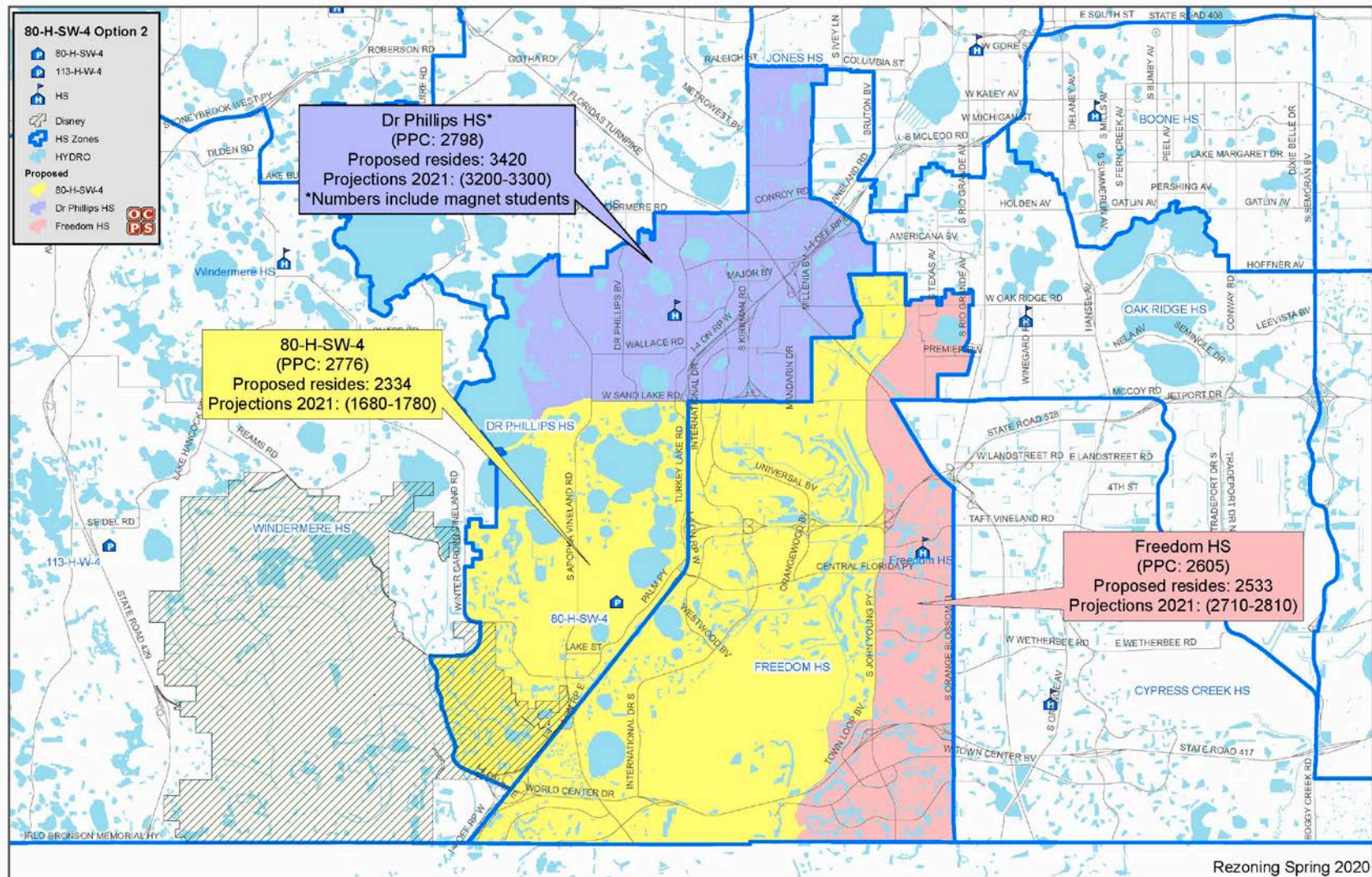
80-H-SW-4 Option 1

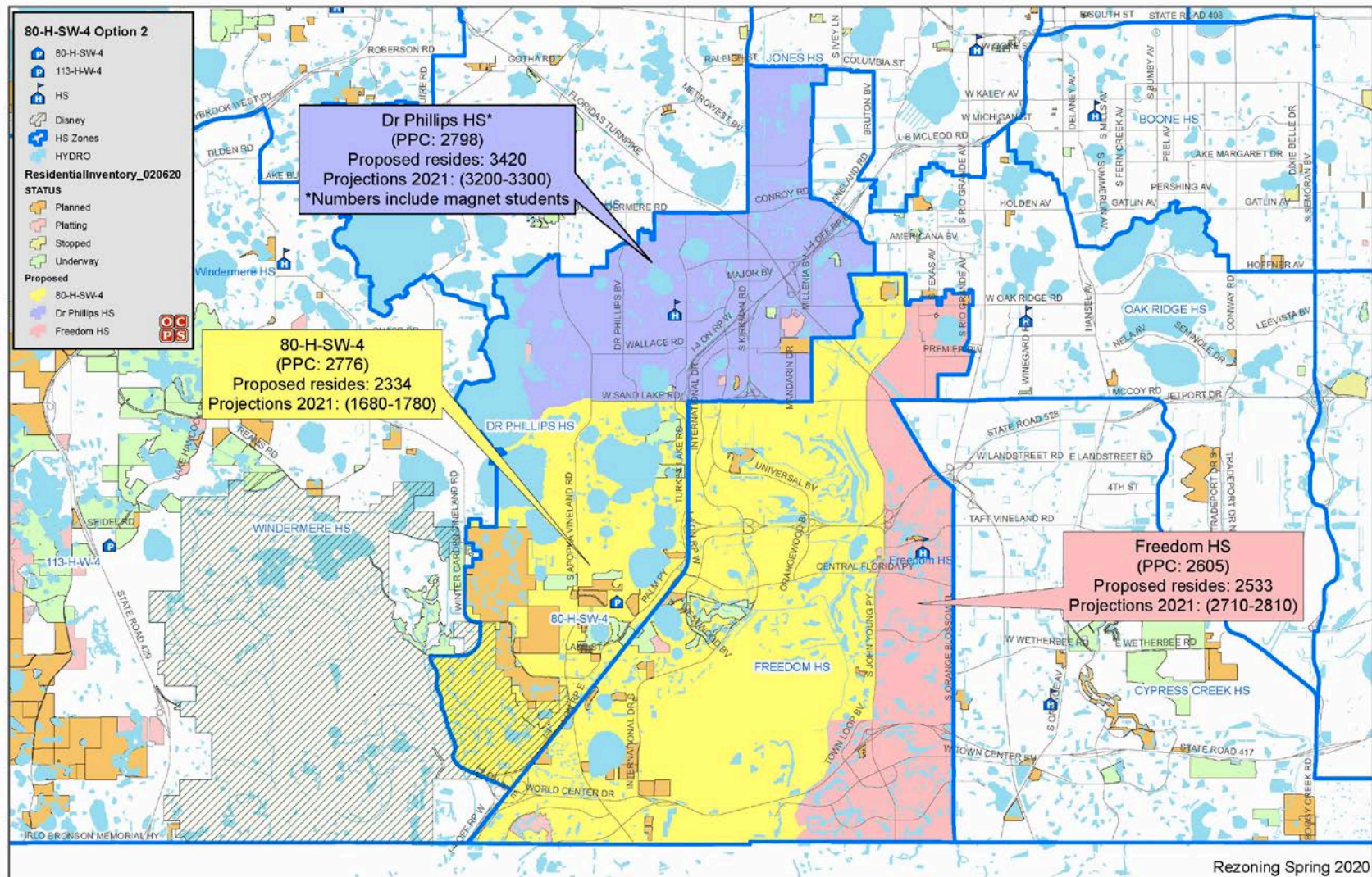
School (Program Capacity)	Enrollment 11/15/2019 (%W/B/O) (%Non-H/H)	Current Number of Students Residing	Proposed Resides* (%W/B/O) (%Non-H/H) (Projected Students 2021)	FARMS	ESE	ELL
				C: Current P: Proposed	C: Current P: Proposed	C: Current P: Proposed
80-H-SW-4 (2,776)	N/A	N/A	1,792 (71/15/14) (50/50) (1240-1340)	C: N/A P: 47%	C: N/A P: 6%	C: N/A P: 28%
Dr. Phillips HS** (2,798)	3806 (59/31/10) (62/38)	4,101	3,529 (56/36/8) (60/40) (3200-3300)	C: 49% P: 54%	C: 7% P: 8%	C: 15% P: 17%
Freedom HS (2,605)	3,826 (77/12/11) (37/63)	4,186	2966 (77/10/13) (40/60) (3020-3120)	C: 52% P: 50%	C: 6% P: 6%	C: 24% P: 19%
(8,179)	Total 7,632	Total 8,287	Total 8,287			


FARMS, ESOL, & ESE numbers reflect students currently residing in these school zones

*Geo-coded students for the 2019-20 school year; includes magnet students residing out of the zone

**Dr. Phillips numbers include students attending magnet program who live outside of the zone





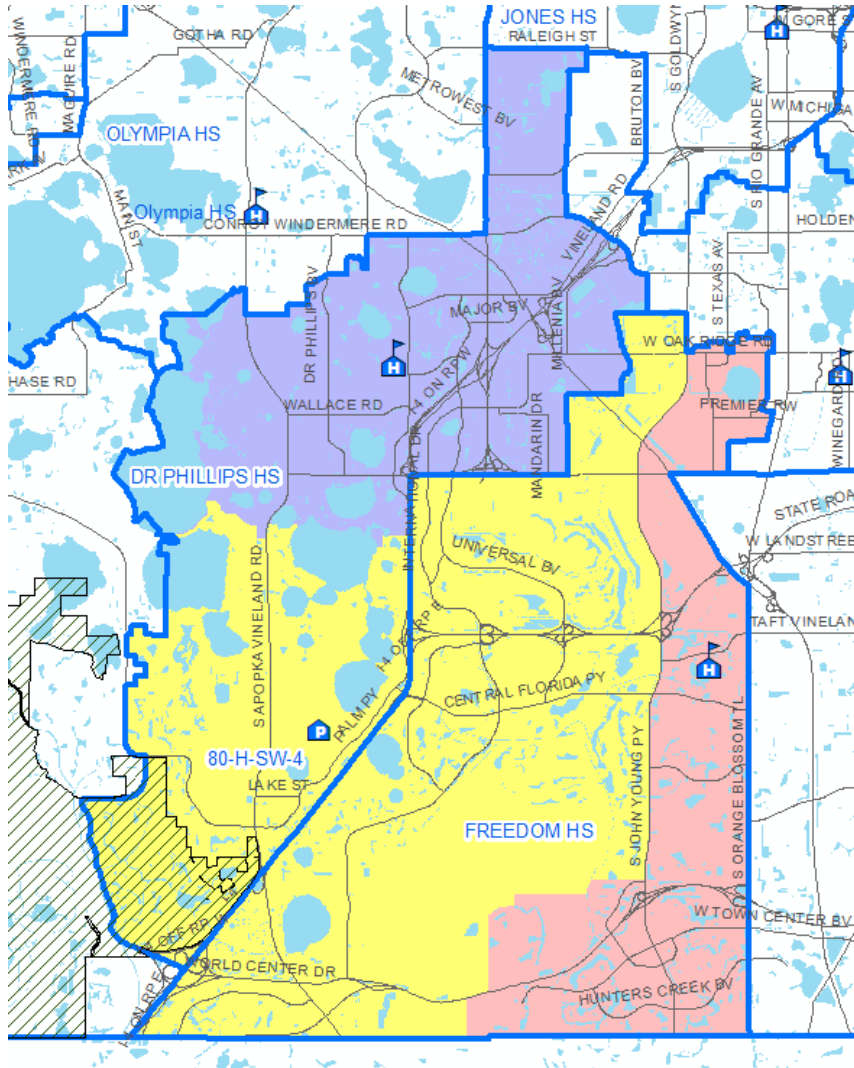
 80-H-SW-4 Option 2						
School (Program Capacity)	Enrollment 11/15/2019 (%W/B/O) (%Non-H/H)	Current Number of Students Residing	Proposed Resides* (%W/B/O) (%Non-H/H) (Projected Students 2021)	FARMS	ESE	ELL
				C: Current P: Proposed	C: Current P: Proposed	C: Current P: Proposed
80-H-SW-4 (2,776)	N/A	N/A	2,334 (72/13/15) (52/48) (1680-1780)	C: N/A P: 43%	C: N/A P: 5%	C: N/A P: 23%
Dr. Phillips HS** (2,798)	3806 (59/31/10) (62/38)	4,101	3,420 (56/36/8) (60/40) (3200-3300)	C: 49% P: 54%	C: 7% P: 8%	C: 15% P: 17%
Freedom HS (2,605)	3,826 (77/12/11) (37/63)	4,186	2533 (78/10/12) (38/62) (2710-2810)	C: 52% P: 52%	C: 6% P: 6%	C: 24% P: 21%
(8,179)	Total 7,632	Total 8,287	Total 8,287			

FARMS, ESOL, & ESE numbers reflect students currently residing in these school zones

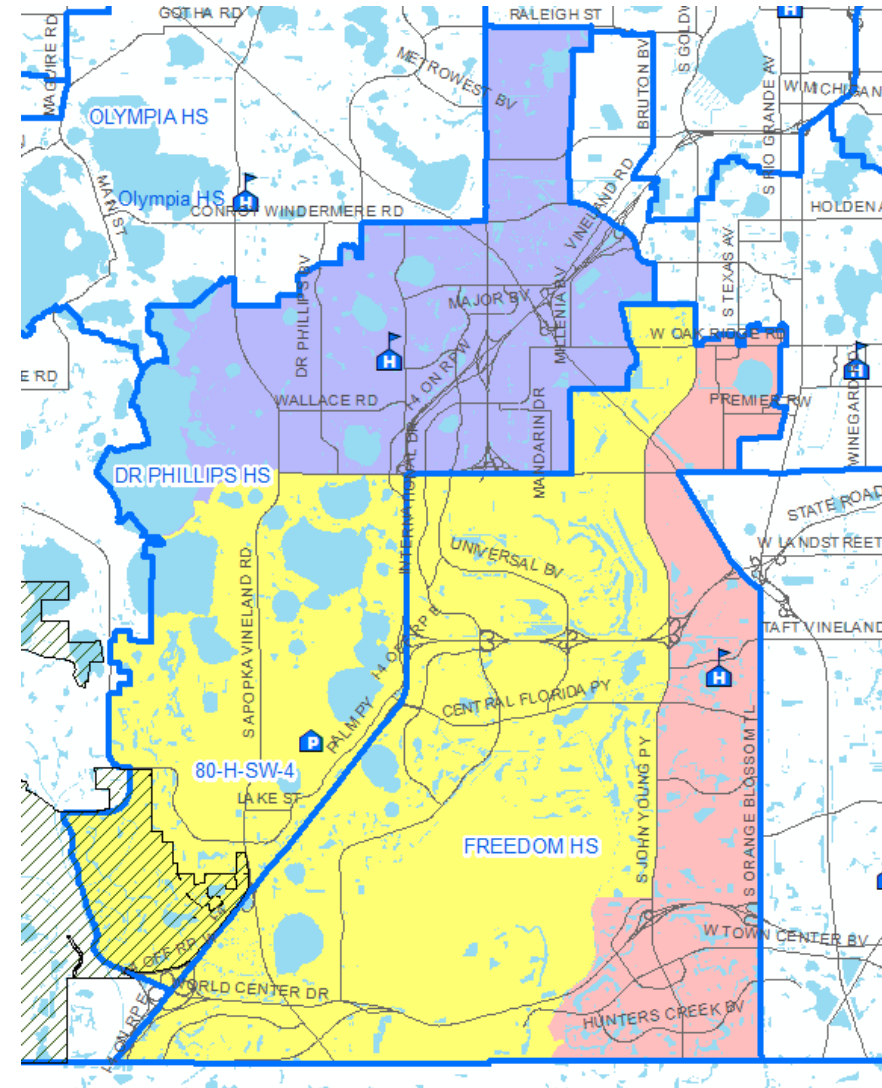
*Geo-coded students for the 2019-20 school year

**Dr. Phillips numbers include students attending magnet program who live outside of the zone

Option 1




Option 2



Options Overview

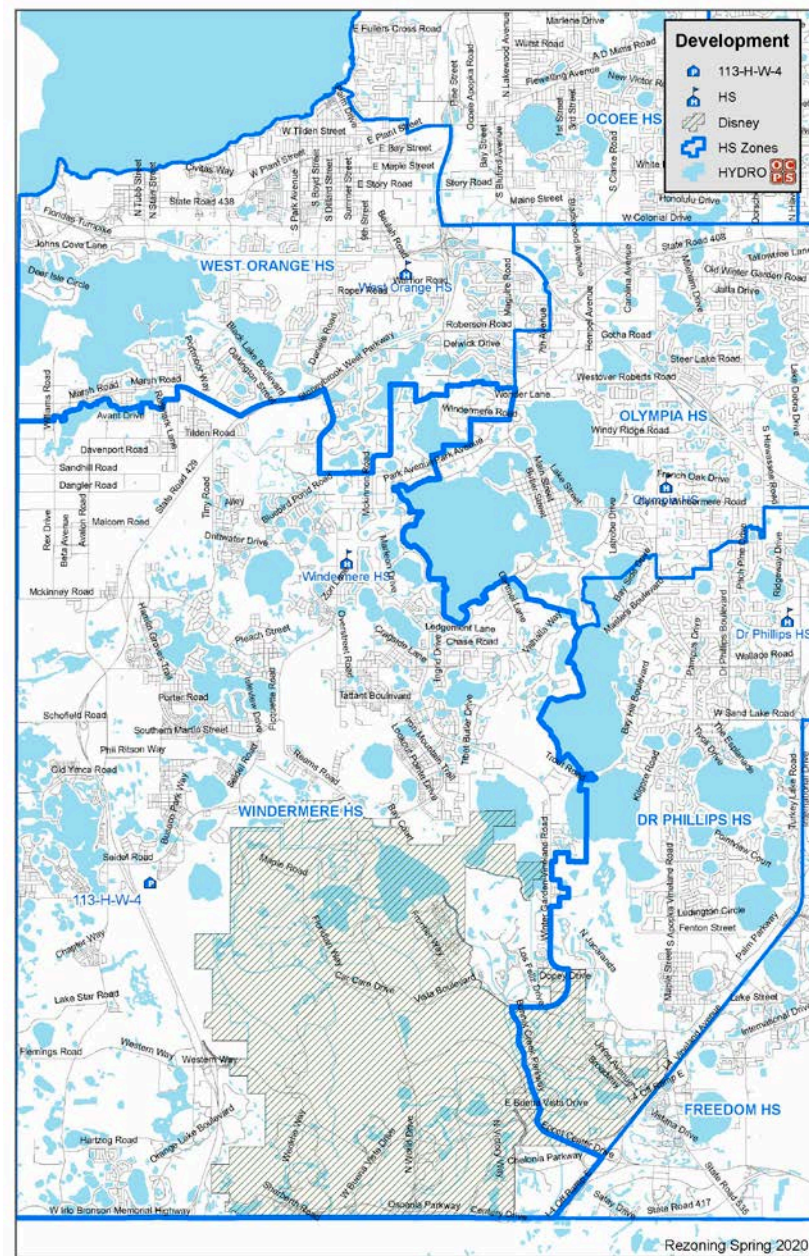
Orange County Public Schools

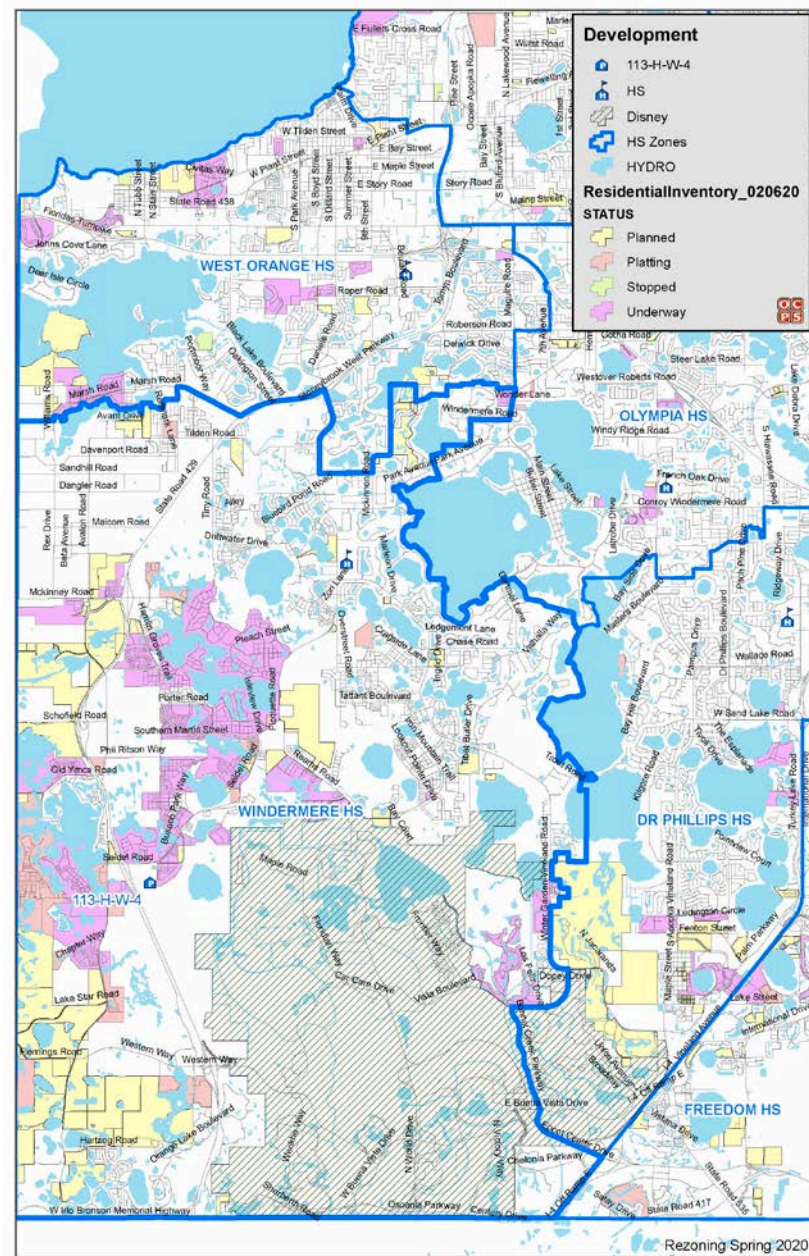
 Options Overview for 80-H-SW-4		
School (Program Capacity)	Option 1	Option 2
	Students residing	Students residing
	Students projected 2021	Students projected 2021
	Students projected 2025	Students projected 2025
80-H-SW-4 (2,776)	1,792	2,334
	(1240-1340)	(1680-1780)
	(1760-1860)	(2320-2420)
Dr. Phillips HS* (2,798)	3529	3420
	(3200-3300)	(3200-3300)
	(2910-3010)	(2810-2910)
Freedom HS (2,605)	2966	2533
	(3020-3120)	(2710-2810)
	(2600-2700)	(2180-2280)

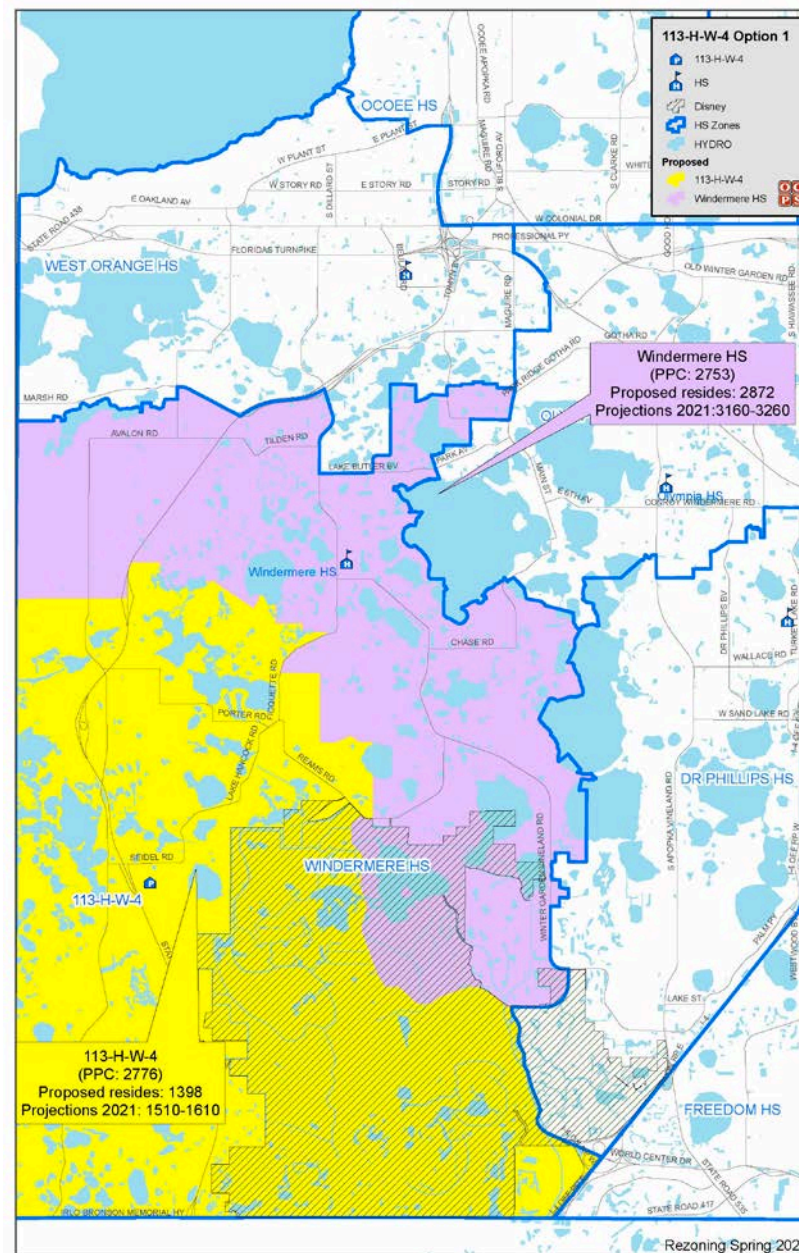
*Numbers include magnet students

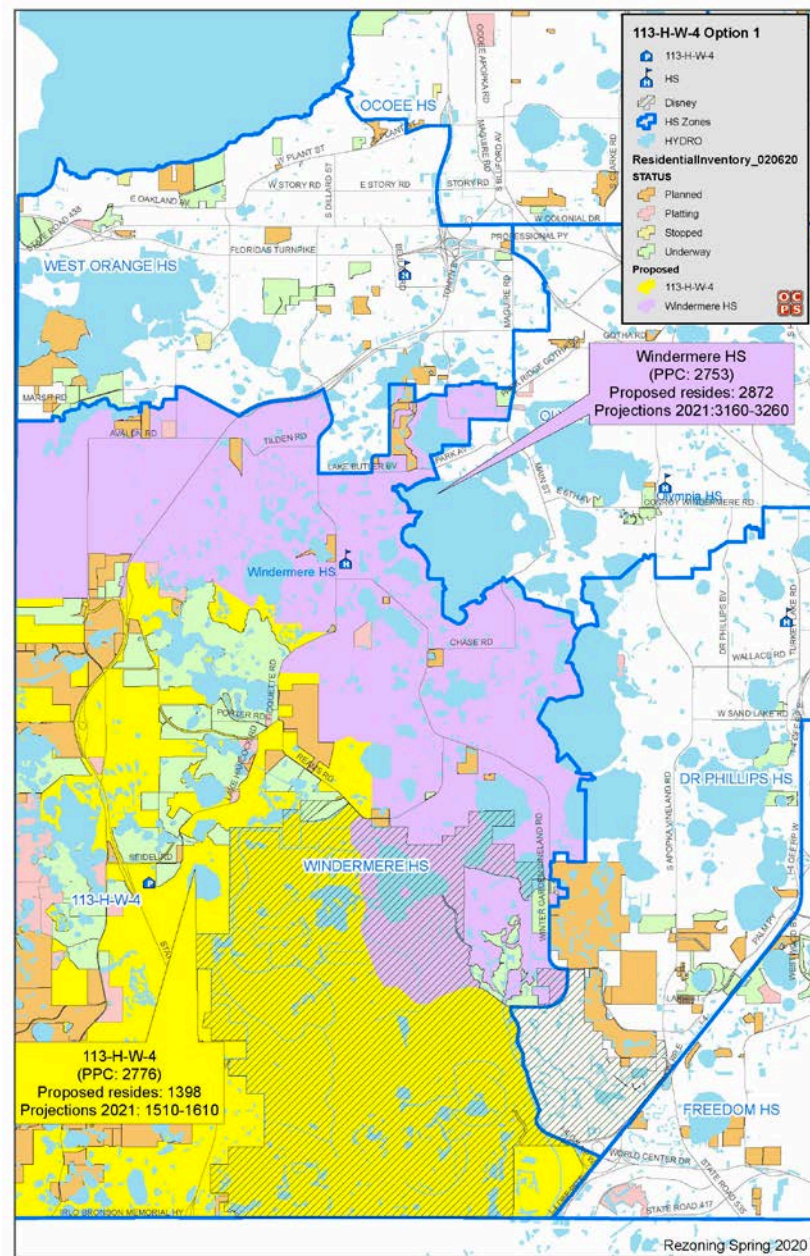
Relief Schools

113-H-W-4











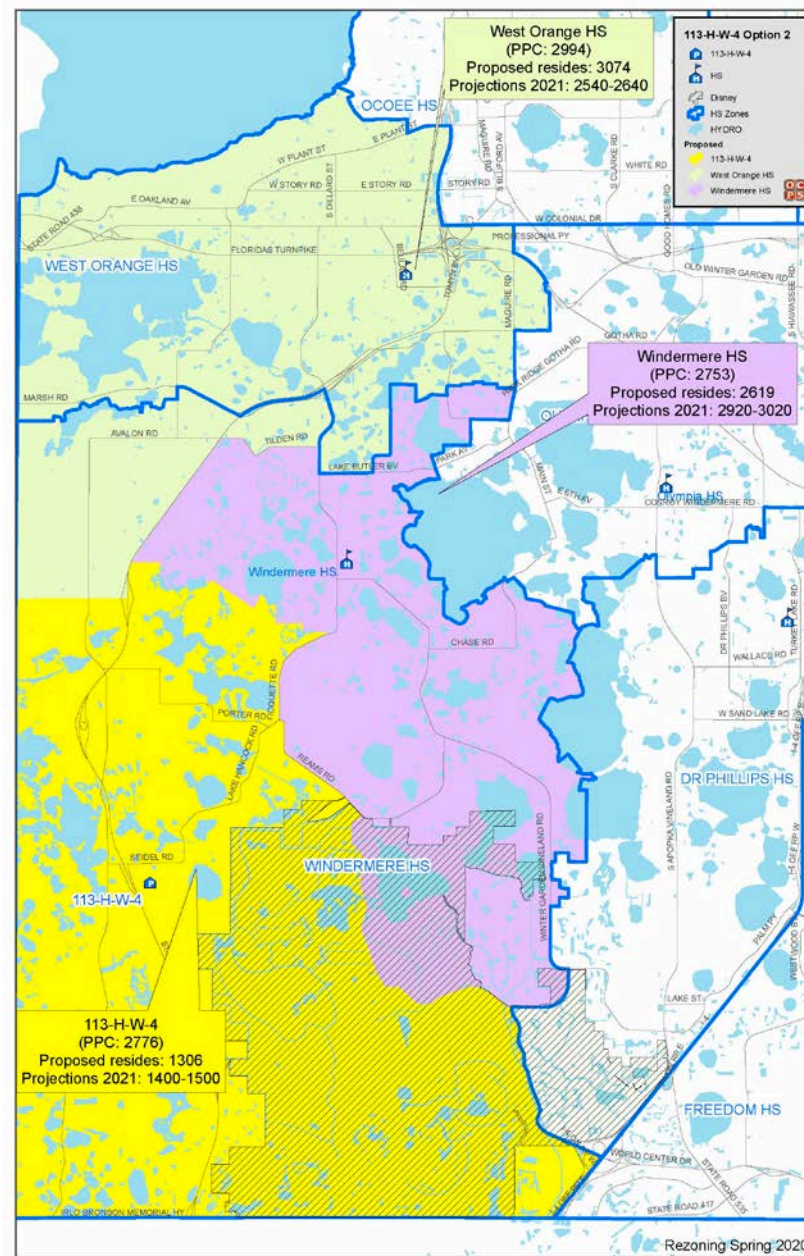
113-H-W-4 Option 1

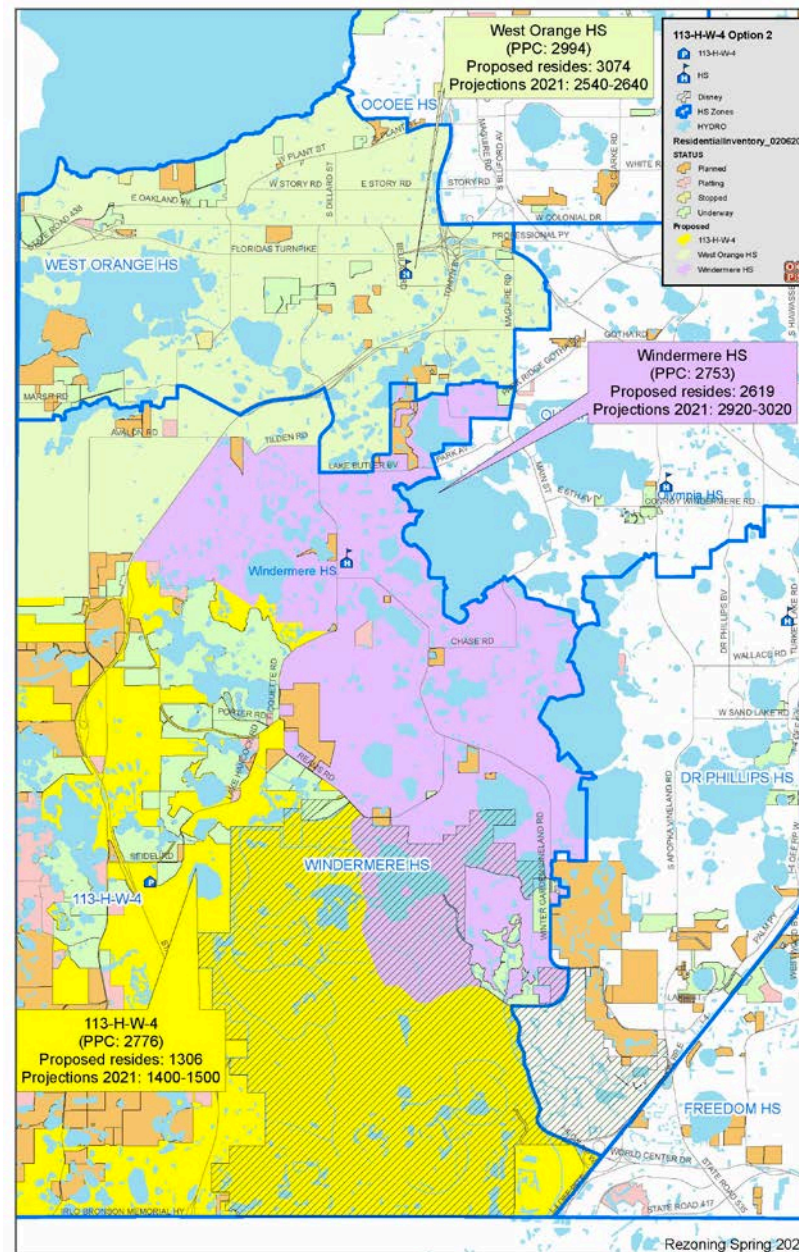
School (Program Capacity)	Enrollment 11/15/2019 (%W/B/O) (%Non-H/H)	Current Number of Students Residing	Proposed Resides* (%W/B/O) (%Non-H/H) (Projected Students 2021)	FARMS	ESE	ELL
				C: Current P: Proposed	C: Current P: Proposed	C: Current P: Proposed
113-H-W-4 (2,776)	N/A	N/A	1,398 (83/8/9) (62/38) (1510-1610)	C: N/A P: 22%	C: N/A P: 6%	C: N/A P: 13%
West Orange HS (2,994)	2,437 (70/19/11) (72/28)	2,729	2,729 (71/17/12) (73/27) (2350-2450)	C: 30% P: 30%	C: 9% P: 9%	C: 5% P: 5%
Windermere HS (2,753)	3,959 (82/8/10) (63/37)	4,270	2,872 (81/7/12) (66/34) (3160-3260)	C: 22% P: 21%	C: 6% P: 6%	C: 14% P: 14%
(8,523)	Total 6,396	Total 6,999	Total 6,999			

FARMS, ESOL, & ESE numbers reflect students currently residing in these school zones

*Geo-coded students for the 2019-20 school year

Not included in the rezoning

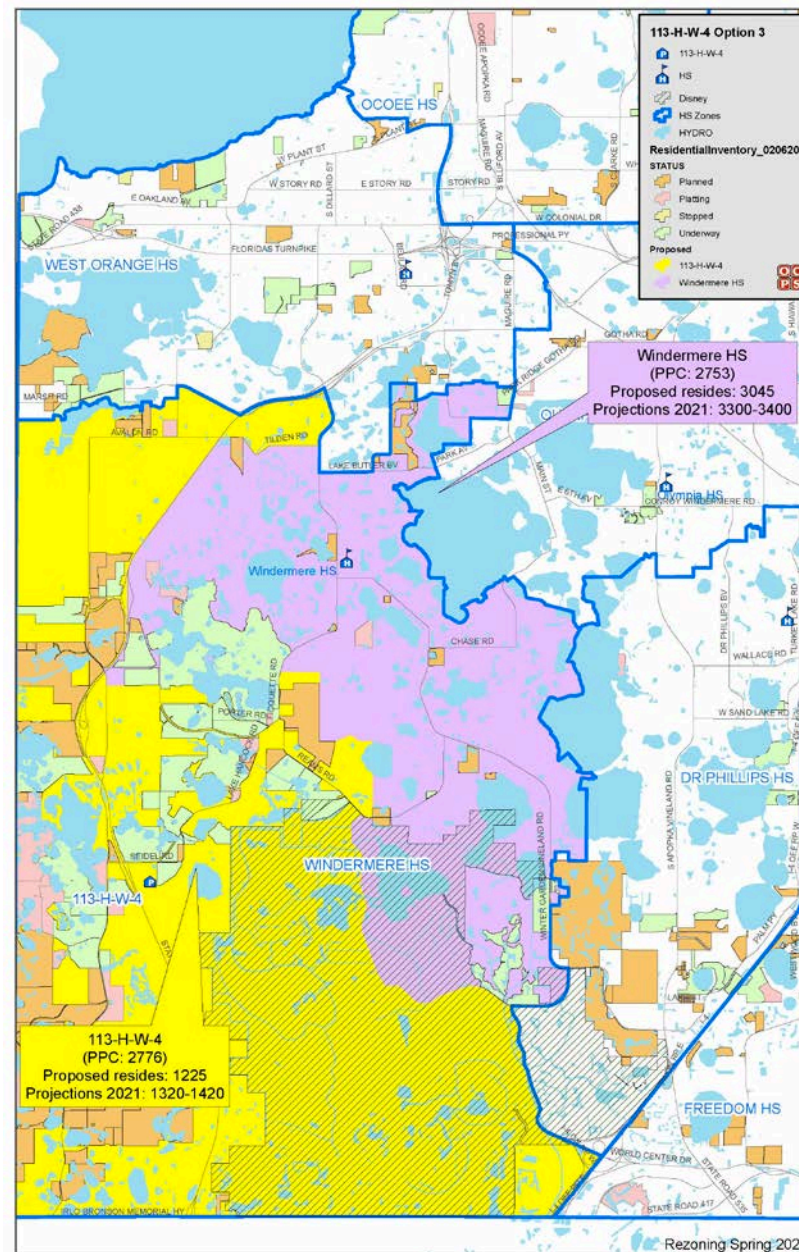




<div> <div>OC PS</div> <div>113-H-W-4 Option 2</div> </div>						
School (Program Capacity)	Enrollment 11/15/2019 (%W/B/O) (%Non-H/H)	Current Number of Students Residing	Proposed Resides* (%W/B/O) (%Non-H/H) (Projected Students 2021)	FARMS	ESE	ELL
				C: Current P: Proposed	C: Current P: Proposed	C: Current P: Proposed
113-H-W-4 (2,776)	N/A	N/A	1,306 (83/7/10) (62/38) (1400-1500)	C: N/A P: 21%	C: N/A P: 6%	C: N/A P: 13%
West Orange HS (2,994)	2,437 (70/19/11) (72/28)	2,729	3,074 (72/16/12) (74/26) (2540-2640)	C: 30% P: 30%	C: 9% P: 9%	C: 5% P: 5%
Windermere HS (2,753)	3,959 (82/8/10) (63/37)	4,270	2,619 (82/7/11) (64/36) (2920-3020)	C: 22% P: 22%	C: 6% P: 5%	C: 14% P: 15%
(8,523)	Total 6,396	Total 6,999	Total 6,999			

FARMS, ESOL, & ESE numbers reflect students currently residing in these school zones

*Geo-coded students for the 2019-20 school year





113-H-W-4 Option 3

School (Program Capacity)	Enrollment 11/15/2019 (%W/B/O) (%Non-H/H)	Current Number of Students Residing	Proposed Resides* (%W/B/O) (%Non-H/H) (Projected Students 2021)	FARMS	ESE	ELL
				C: Current P: Proposed	C: Current P: Proposed	C: Current P: Proposed
113-H-W-4 (2,776)	N/A	N/A	1,225 (80/9/11) (63/37) (1320-1420)	C: N/A P: 23%	C: N/A P: 7%	C: N/A P: 13%
West Orange HS (2,994)	2,437 (70/19/11) (72/28)	2,729	2,729 (71/17/12) (73/27) (2350-2450)	C: 30% P: 30%	C: 9% P: 9%	C: 5% P: 5%
Windermere HS (2,753)	3,959 (82/8/10) (63/37)	4,270	3,045 (82/7/11) (65/35) (3300-3400)	C: 22% P: 21%	C: 6% P: 5%	C: 14% P: 14%
(8,523)	Total 6,396	Total 6,999	Total 6,999			

FARMS, ESOL, & ESE numbers reflect students currently residing in these school zones

*Geo-coded students for the 2019-20 school year

Not included in the rezoning



113-H-W-4 Option 4

School (Program Capacity)	Enrollment 11/15/2019 (%W/B/O) (%Non-H/H)	Current Number of Students Residing	Proposed Resides* (%W/B/O) (%Non-H/H) (Projected Students 2021)	FARMS	ESE	ELL
				C: Current P: Proposed	C: Current P: Proposed	C: Current P: Proposed
113-H-W-4 (2,776)	N/A	N/A	880 (82/9/9) (58/42) (995-1095)	C: N/A P: 22%	C: N/A P: 6%	C: N/A P: 16%
West Orange HS (2,994)	2,437 (70/19/11) (72/28)	2,729	3,074 (72/16/12) (74/26) (2540-2640)	C: 30% P: 30%	C: 9% P: 9%	C: 5% P: 5%
Windermere HS (2,753)	3,959 (82/8/10) (63/37)	4,270	3,045 (82/7/11) (65/35) (3300-3400)	C: 22% P: 21%	C: 6% P: 5%	C: 14% P: 14%
(8,523)	Total 6,396	Total 6,999	6,999			

FARMS, ESOL, & ESE numbers reflect students currently residing in these school zones

*Geo-coded students for the 2019-20 school year

The map displays the service area for Windermere HS, with various colored zones indicating different levels of service or land use. Key roads shown include Marsh Rd, Stoneybrook Way, Tilden Rd, Lake Butler Bv, Avalon Rd, Porter Rd, Seitel Rd, Reams Rd, Chase Rd, State Road 42, Offspring Rd, and Carlisle Rd. The map also shows the locations of Windermere HS and Olympia HS. The area is divided into several colored regions: a large yellow area in the south and west, a purple area in the north and east, a blue area in the northeast, and a green area in the southeast. The text '113-H-W-4' is visible in the bottom left corner, and 'WINDERMERE HS' is written in the center of the map.


[illegible]

Map of Windermere, FL, showing the location of 113-H-W-4. The map includes major roads like US Highway 1, State Road 40, and various local streets. The Windermere HS area is highlighted in purple, and the 113-H-W-4 area is highlighted in yellow with diagonal hatching. The map also shows the location of the Windermere HS and the 113-H-W-4 area.

This map illustrates the geographical layout of West Orange and Windermere, Florida, highlighting school district boundaries and major thoroughfares. The map is color-coded: light blue for areas within the West Orange HS district, pink for Windermere HS, and yellow for the 113-H-W-4 district. Major roads are depicted as grey lines, including State Road 438, State Road 436, and State Road 434. Key landmarks such as the IRL Bronson Memorial High School and the Windermere HS are marked with blue house icons. The map also shows the proximity to the Ocoee and White Horse areas to the north and the Lake Nona area to the east.

Options Overview

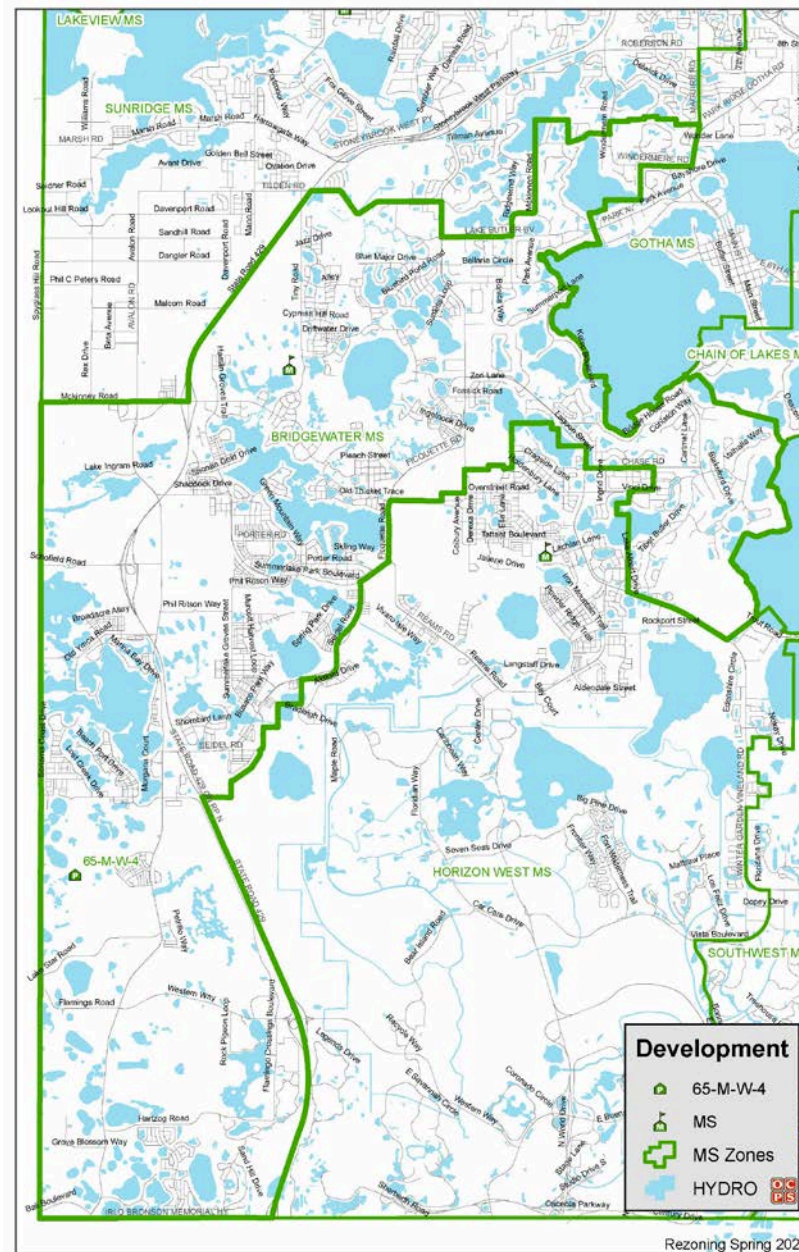
Orange County Public Schools

<div>  Options Overview for 113-H-W-4 </div>				
School (Program Capacity)	Option 1	Option 2	Option 3	Option 4
	Students residing	Students residing	Students residing	Students residing
	Students projected 2021	Students projected 2021	Students projected 2021	Students projected 2021
	Students projected 2025	Students projected 2025	Students projected 2025	Students projected 2025
113-H-W-4 (2,753)	1,398	1,306	1,225	880
	(1510-1610)	(1400-1500)	1320-1420	(995-1095)
	(3600-3700)	(3355-3455)	(3310-3410)	(2490-2590)
West Orange HS (2,994)	2729	3074	2729	3074
	(2350-2450)	(2540-2640)	(2350-2450)	(2540-2640)
	(2230-2330)	(2530-2630)	(2230-2330)	(2530-2630)
Windermere HS (2,753)	2872	2619	3045	3045
	(3160-3260)	2920-3020	3300-3400	3300-3400
	(3000-3100)	(2760-2860)	(3125-3225)	(3125-3225)

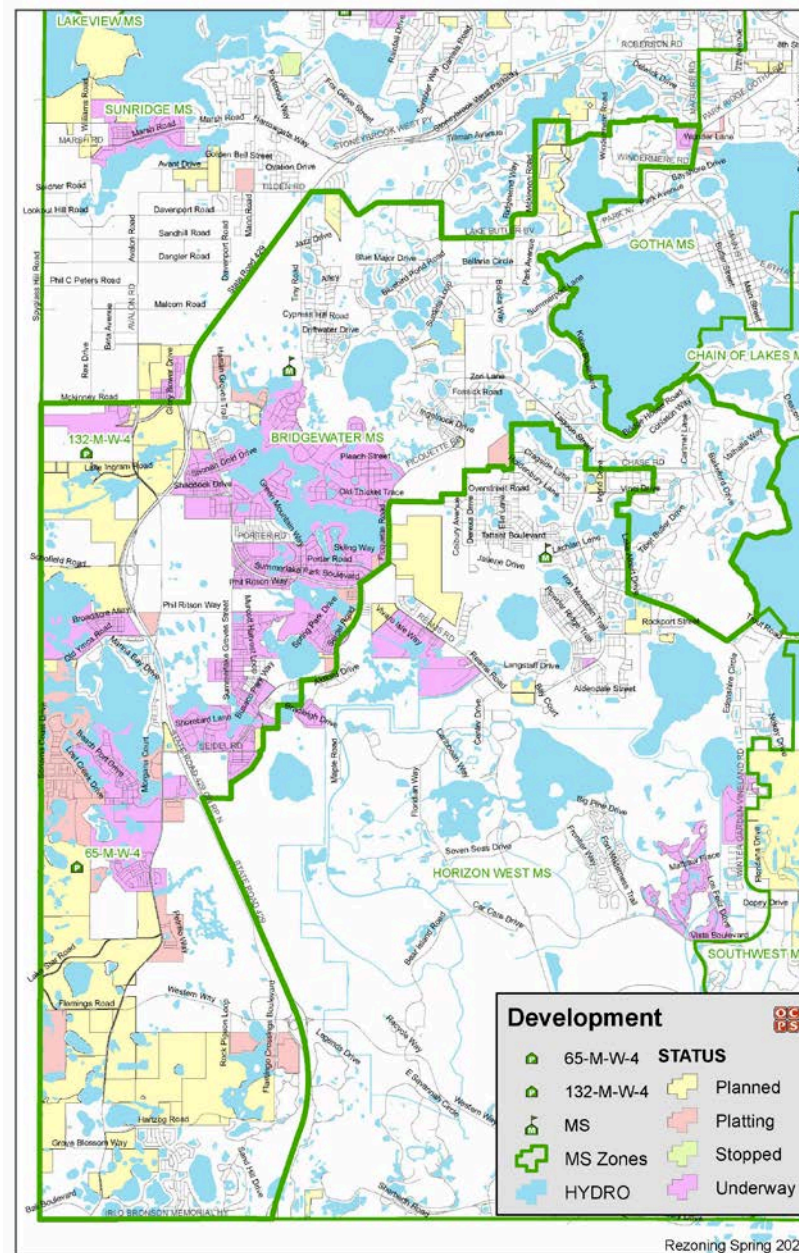
Not included in the rezoning

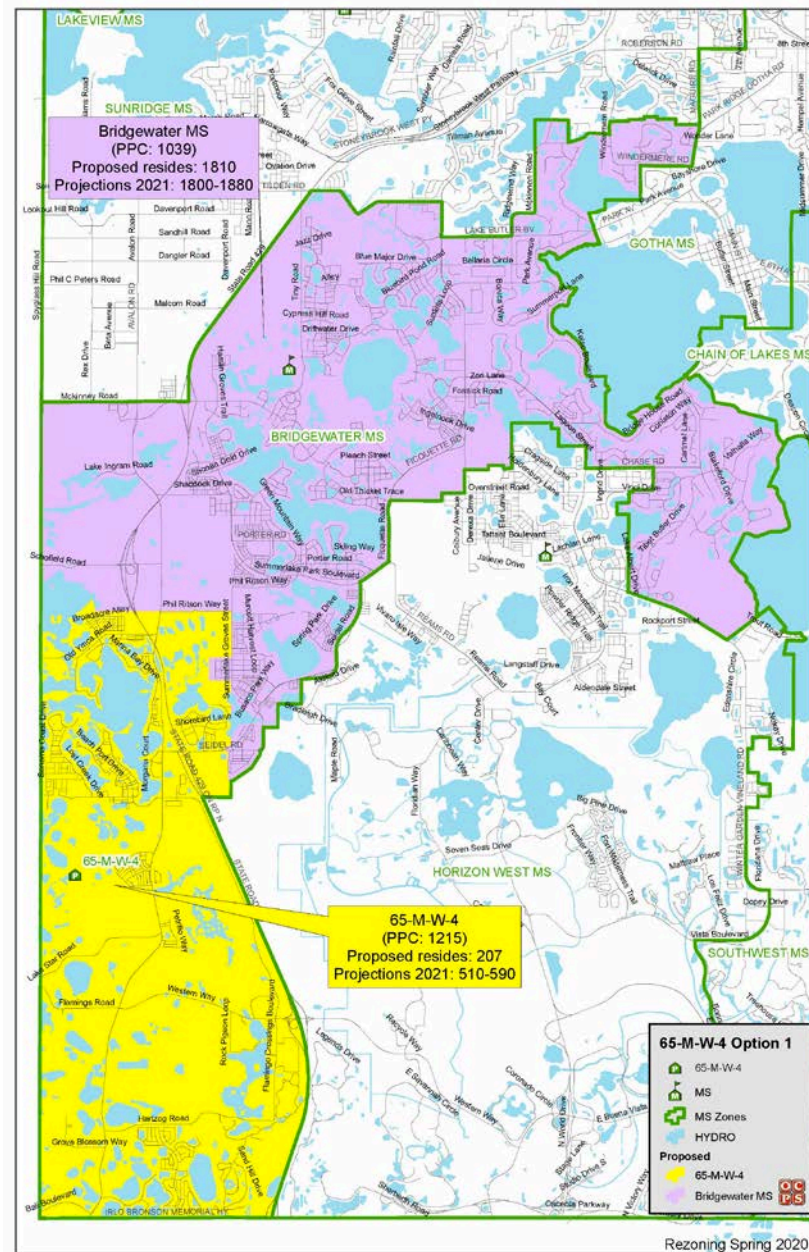
Relief Schools

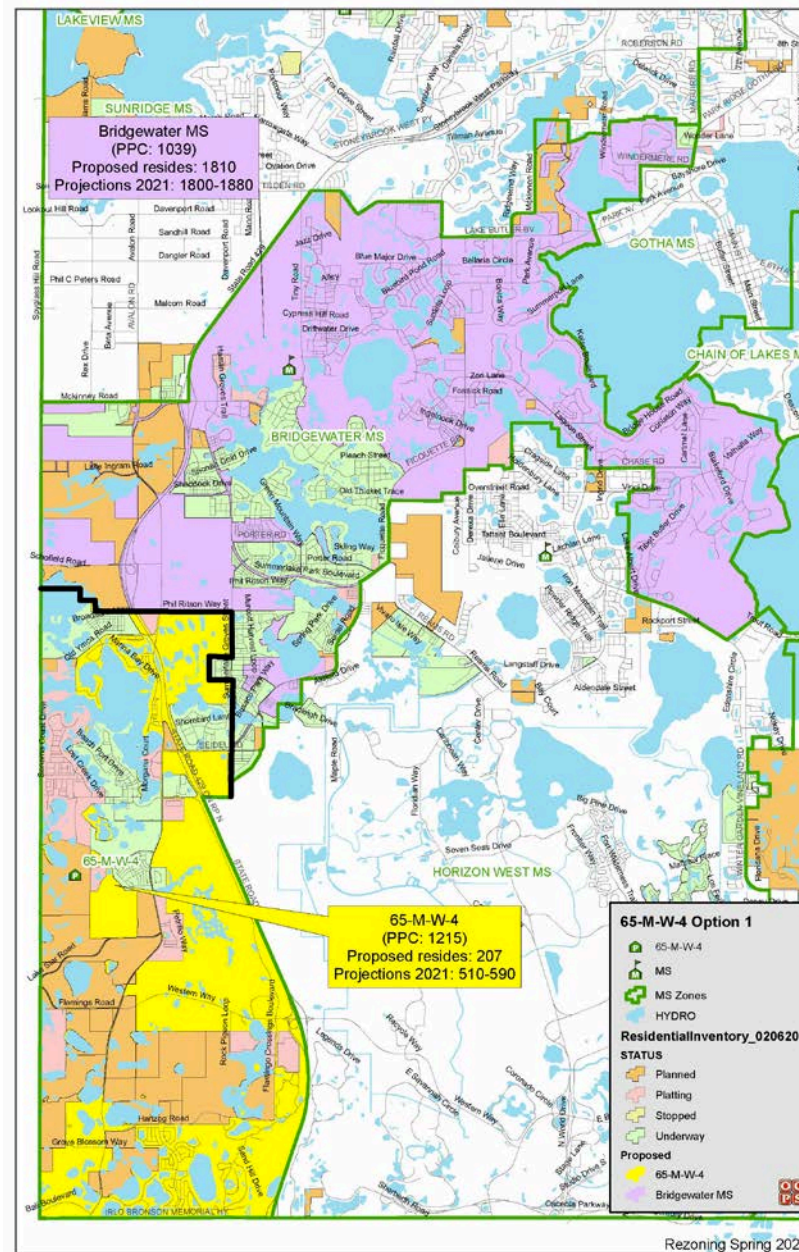
65-M-W-4




Rezoning Spring 2020



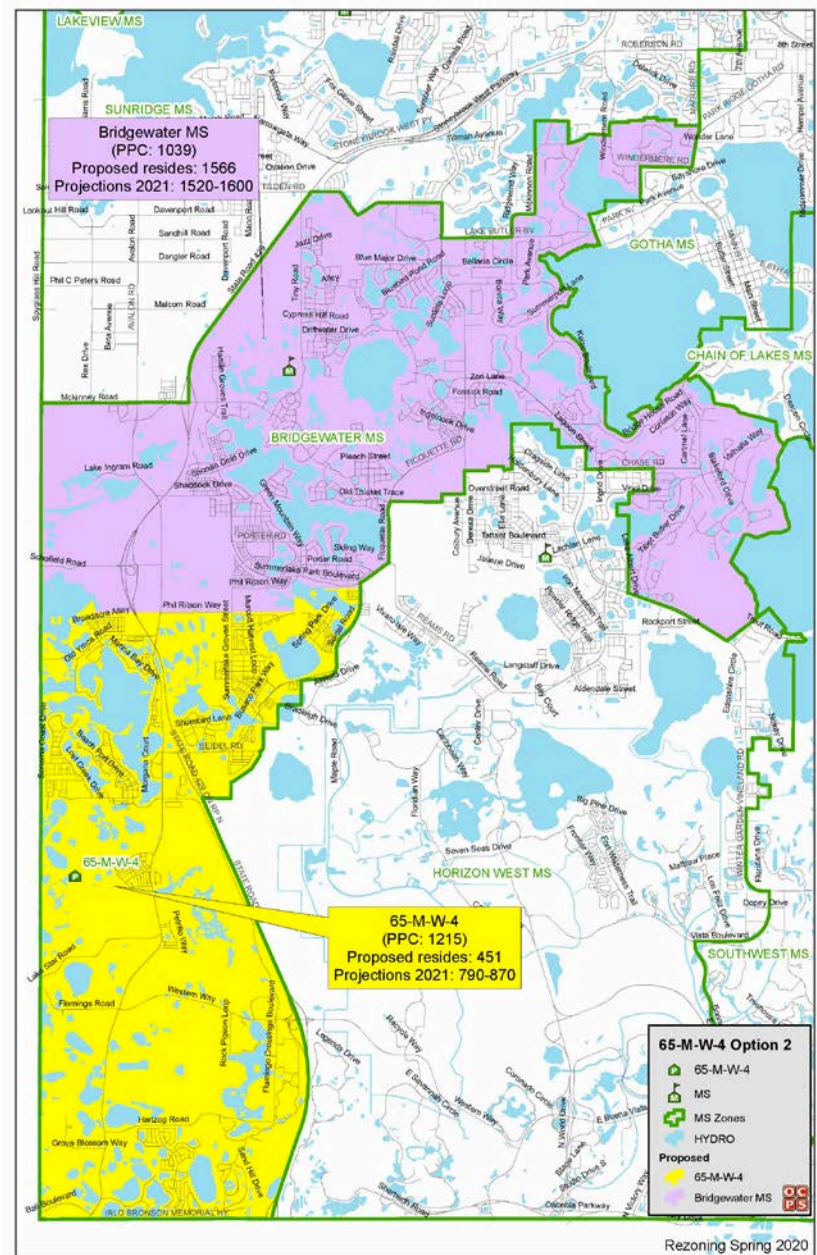


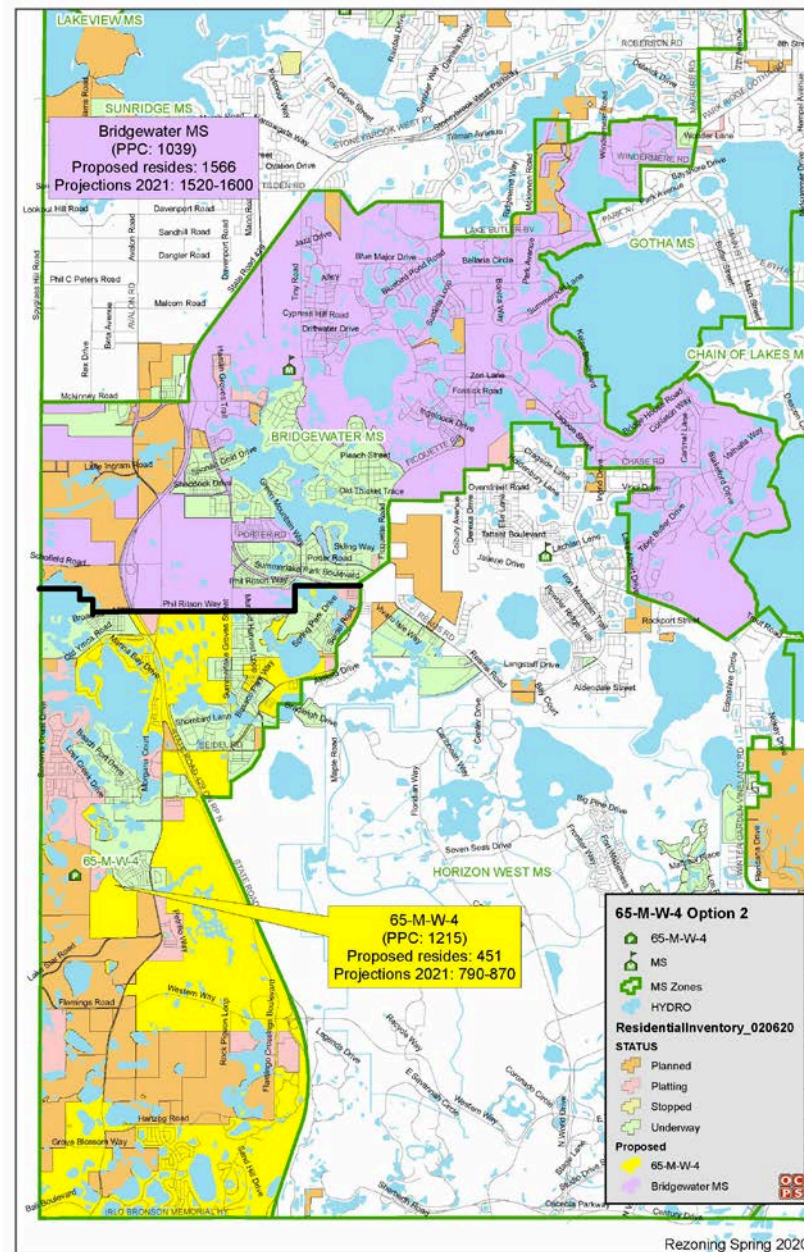



 65-M-W-4 Option 1						
School (Program Capacity)	Enrollment 11/15/2019 (%W/B/O) (%Non-H/H)	Current Number of Students Residing	Proposed Resides* (%W/B/O) (%Non-H/H) (Projected Students 2021)	FARMS	ESE	ELL
				C: Current P: Proposed	C: Current P: Proposed	C: Current P: Proposed
65-M-W-4 (1,215)	N/A	N/A	207 (84/12/4) (61/39) (510-590)	C: N/A P: 29%	C: N/A P: 10%	C: N/A P: 13%
Bridgewater MS (1,039)	1,827 (83/8/9) (68/32)	2,017	1,810 (82/7/11) (70/30) (1800-1880)	C: 17% P: 16%	C: 8% P: 7%	C: 13% P: 13%
(2,254)	Total 1,827	Total 2,017	Total 2,017			

FARMS, ESOL, & ESE numbers reflect students currently residing in these school zones

*Geo-coded students for the 2019-20 school year

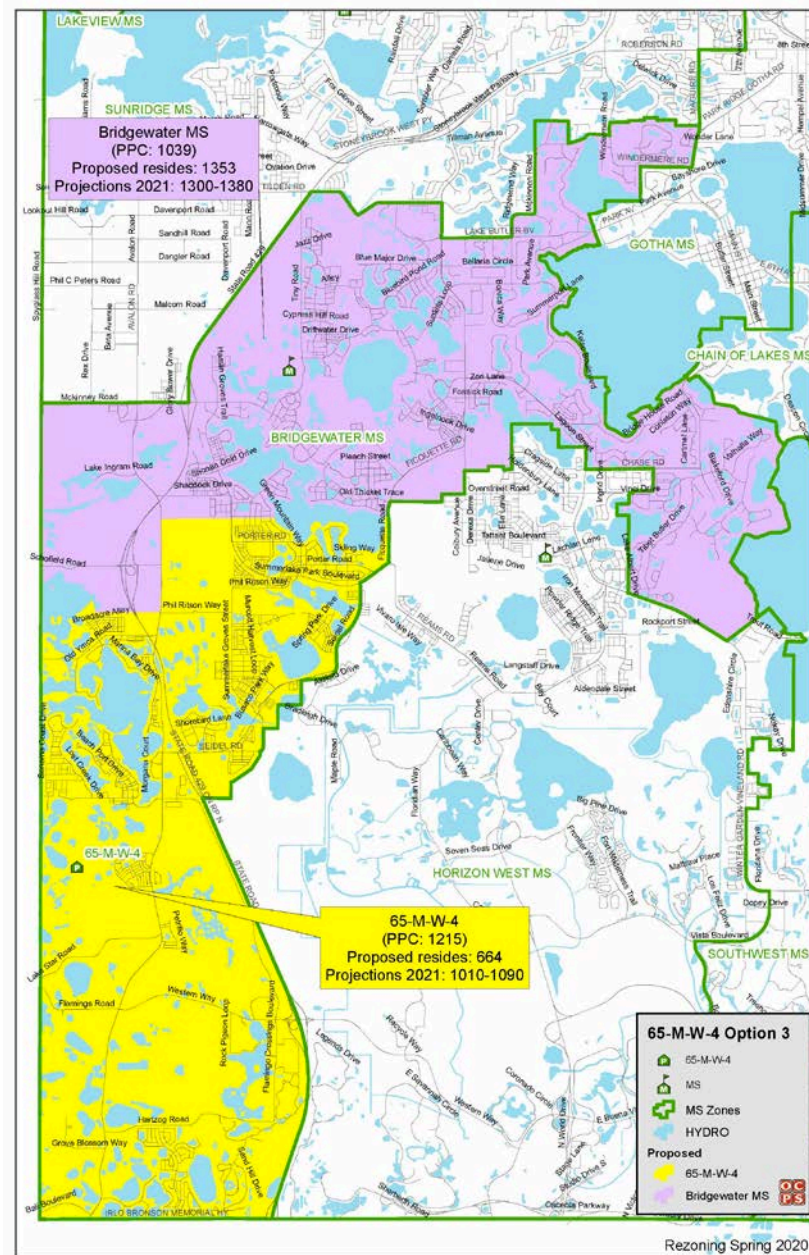


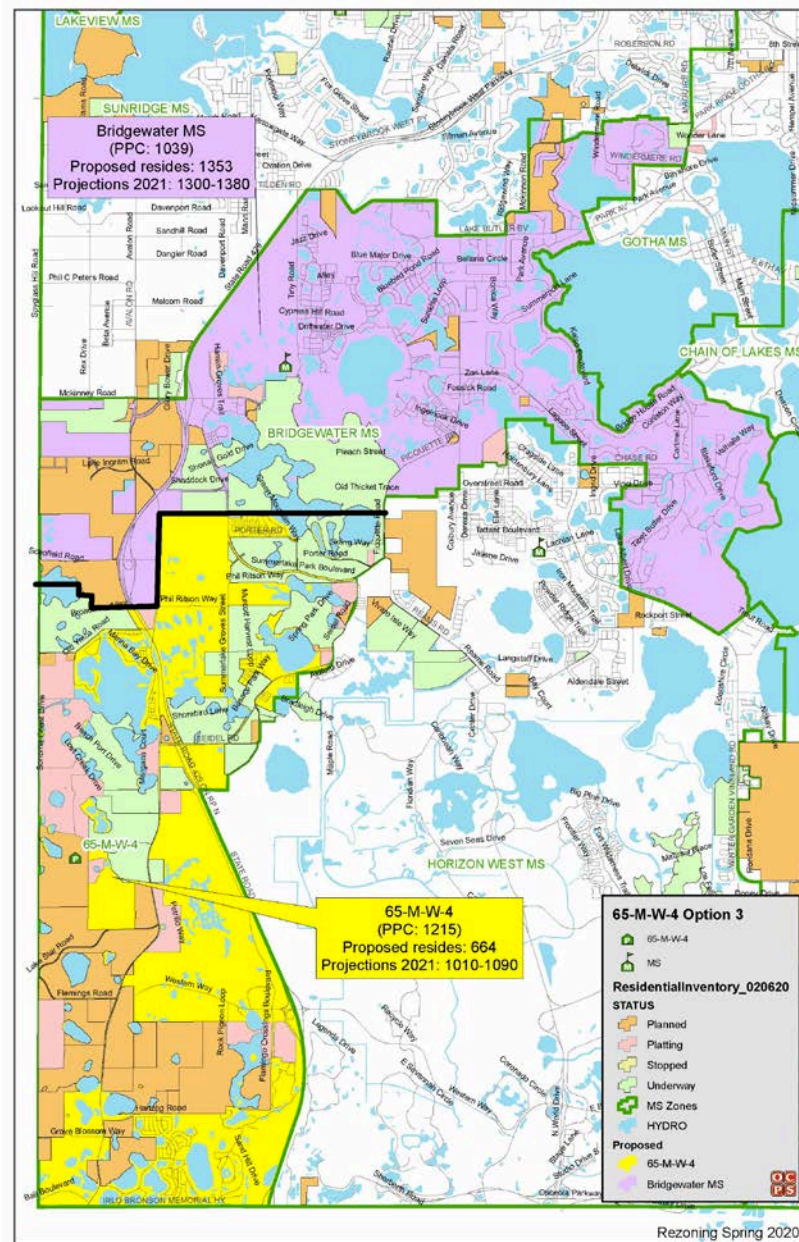



 65-M-W-4 Option 2						
School (Program Capacity)	Enrollment 11/15/2019 (%W/B/O) (%Non-H/H)	Current Number of Students Residing	Proposed Resides* (%W/B/O) (%Non-H/H) (Projected Students 2021)	FARMS	ESE	ELL
				C: Current P: Proposed	C: Current P: Proposed	C: Current P: Proposed
65-M-W-4 (1,215)	N/A	N/A	451 (82/10/8) (58/42) (790-870)	C: N/A P: 24%	C: N/A P: 8%	C: N/A P: 18%
Bridgewater MS (1,039)	1,827 (83/8/9) (68/32)	2,017	1,566 (82/7/11) (73/27) (1520-1600)	C: 17% P: 16%	C: 8% P: 8%	C: 13% P: 12%
(2,254)	Total 1,827	Total 2,017	Total 2,017			

FARMS, ESOL, & ESE numbers reflect students currently residing in these school zones

*Geo-coded students for the 2019-20 school year



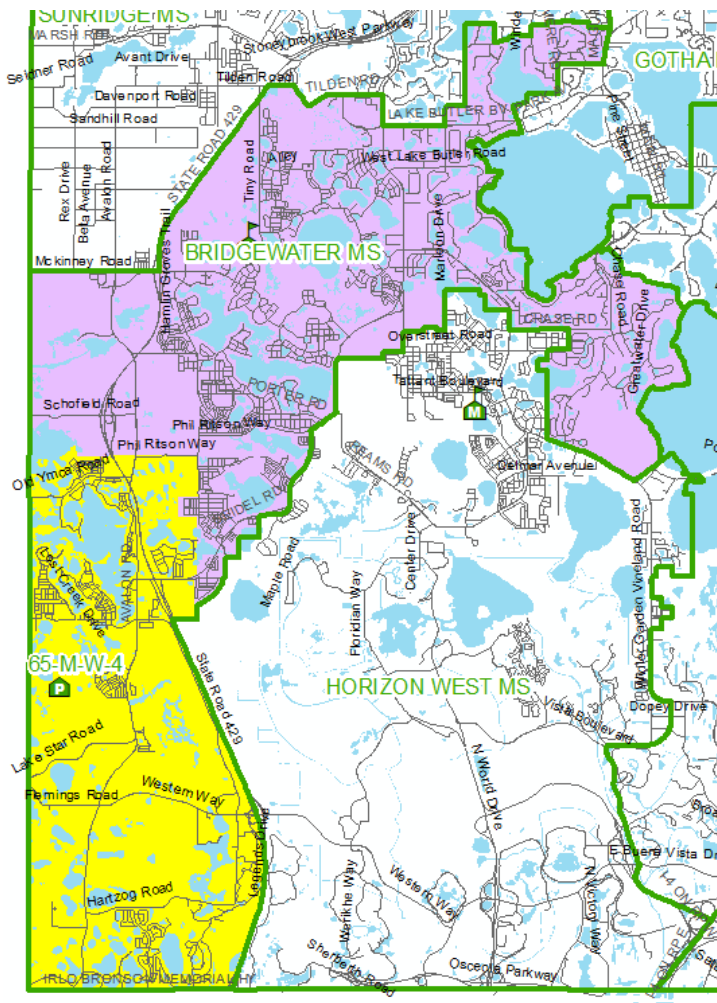


 65-M-W-4 Option 3						
School (Program Capacity)	Enrollment 11/15/2019 (%W/B/O) (%Non-H/H)	Current Number of Students Residing	Proposed Resides* (%W/B/O) (%Non-H/H) (Projected Students 2021)	FARMS	ESE	ELL
				C: Current P: Proposed	C: Current P: Proposed	C: Current P: Proposed
65-M-W-4 (1,215)	N/A	N/A	664 (83/9/8) (60/40) (1010-1090)	C: N/A P: 21%	C: N/A P: 7%	C: N/A P: 16%
Bridgewater MS (1,039)	1,827 (83/8/9) (68/32)	2,017	1,353 (81/7/12) (74/26) (1300-1380)	C: 17% P: 16%	C: 8% P: 8%	C: 13% P: 12%
(2,254)	Total 1,827	Total 2,017	Total 2,017			

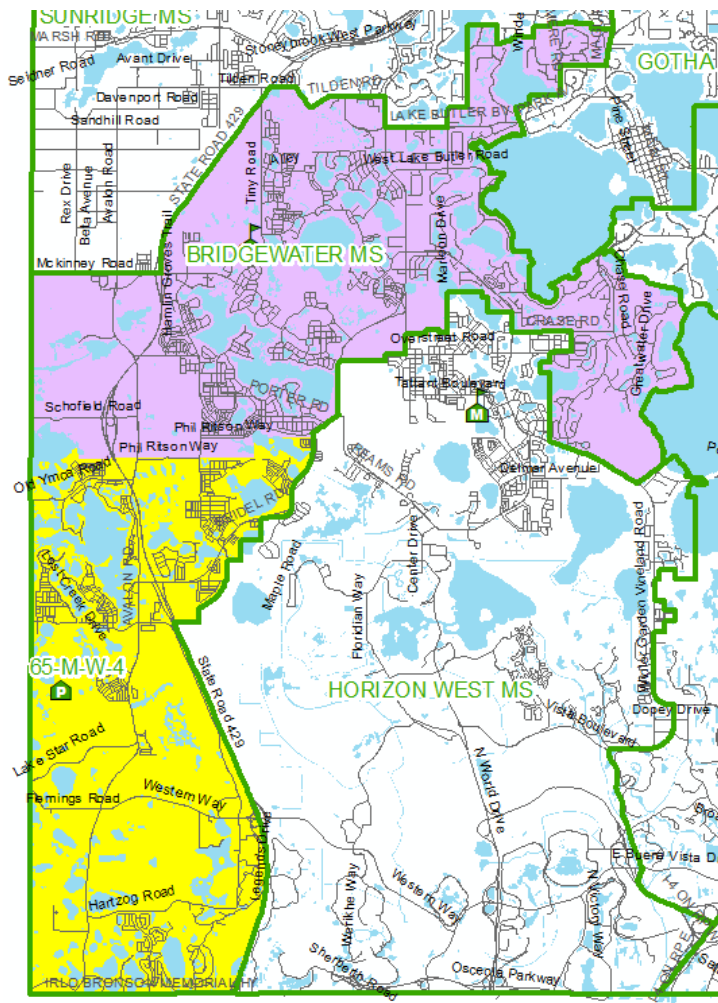
FARMS, ESOL, & ESE numbers reflect students currently residing in these school zones

*Geo-coded students for the 2019-20 school year

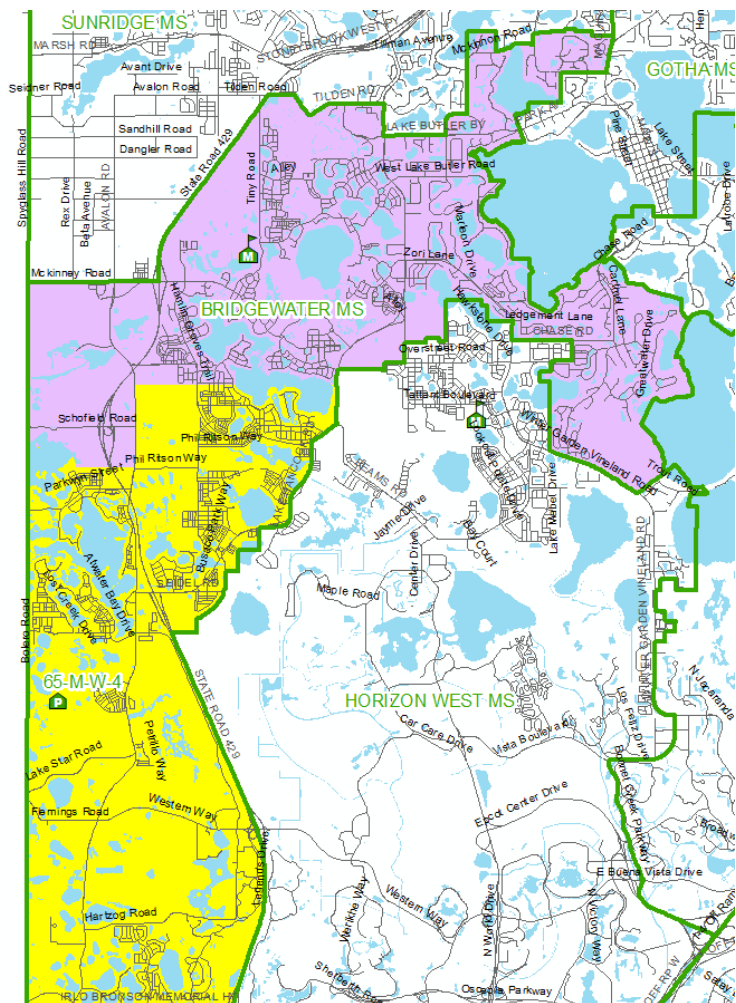
Option 1



Option 2




Option 3



Options Overview

Orange County Public Schools

 Options Overview for 65-M-W-4			
School (Program Capacity)	Option 1	Option 2	Option 3
	Students residing	Students residing	Students residing
	Students projected 2021	Students projected 2021	Students projected 2021
	Students projected 2023	Students projected 2023	Students projected 2023
65-M-W-4 (1,215)	207	451	664
	510-590	790-870	1010-1090
	850-930	1195-1275	1405-1485
Bridgewater MS (1,039)	1810	1566	1353
	1800-1880	1520-1600	1300-1380
	1810-1890	1465-1545	1255-1335

Options Overview

65-M-W-4 and 113-H-W-4 Middle-High School Model
65-M-W-4 scheduled to open 2023 (current CIP)

		2021	2022	2023	2024
Option 1	65-M-W-4	551	720	888	1063
Option 1	113-H-W-4	1562	2282	2716	3112
	Total	2113	3002	3604	4175
Option 1	65-M-W-4	551	720	888	1063
Option 2	113-H-W-4	1452	2122	2535	2889
	Total	2003	2842	3423	3952
Option 1	65-M-W-4	551	720	888	1063
Option3	113-H-W-4	1367	2032	2435	2830
	Total	1918	2752	3323	3893
Option 1	65-M-W-4	551	720	888	1063
Option 4	113-H-W-4	1045	1533	1861	2178
	Total	1596	2253	2749	3241

		2021	2022	2023	2024
Option 2	65-M-W-4	827	1020	1198	1303
Option 1	113-H-W-4	1562	2282	2716	3112
	Total	2389	3302	3914	4415
Option 2	65-M-W-4	827	1020	1198	1303
Option 2	113-H-W-4	1452	2122	2535	2889
	Total	2279	3142	3733	4192
Option 2	65-M-W-4	827	1020	1198	1303
Option3	113-H-W-4	1367	2032	2435	2830
	Total	2194	3052	3633	4133
Option 2	65-M-W-4	827	1020	1198	1303
Option 4	113-H-W-4	1045	1533	1861	2178
	Total	1872	2553	3059	3481

		2021	2022	2023	2024
Option 3	65-M-W-4	1057	1310	1445	1605
Option 1	113-H-W-4	1562	2282	2716	3112
	Total	2619	3592	4161	4717
Option 3	65-M-W-4	1057	1310	1445	1605
Option 2	113-H-W-4	1452	2122	2535	2889
	Total	2509	3432	3980	4494
Option 3	65-M-W-4	1057	1310	1445	1605
Option3	113-H-W-4	1367	2032	2435	2830
	Total	2424	3342	3880	4435
Option 3	65-M-W-4	1057	1310	1445	1605
Option 4	113-H-W-4	1045	1533	1861	2178
	Total	2102	2843	3306	3783



Questions and Discussion

Community Input

Rezoning	Survey Links
Sand Lake Hills	https://arcg.is/Sr4rb
Sand Lake – Bay Meadows	https://arcg.is/1DeWzm
Wintermere Pointe and Emerald Ridge	https://arcg.is/a9PCS
43-E-SE-2	https://arcg.is/1OW0e4
80-H-SW-4	https://arcg.is/a0LWC0
113-H-W-4	https://arcg.is/5TKjm
65-M-W-4	https://arcg.is/1Trn5L