

Monday, September 24, 2018

30% Design Community Meeting

Site 83-E-SE-3

Please sign in on your mobile device: <http://communitymeeting.ocps.net/>



**Orange County
Public Schools**

Site 83-E-SE-3

Meeting Agenda

September 24, 2018, 6:00PM

- Welcome – School Board Member, Daryl Flynn
- Introductions – Facilities Meeting Organizer
Lauren Roth
- Project Update
Architect: Rhodes+Brito Architects
- Questions and Answers
- Adjournment

Facilities Live Town Hall

Last month, Facilities and Board Members Daryl Flynn and Pam Gould co-hosted a Live Town Hall meeting explaining the process for planning new schools.

To view answers to frequently asked questions such as *“How does OCPS plan schools?”* and *“How does OCPS decide which schools go first?”* visit: <https://bit.ly/2OLS4Rn>

For the Powerpoint presentation that accompanies the video, please visit: <https://bit.ly/2zn2zVT>

Rezoning Process

School Board Policy JC

[https://www.ocps.net/sb/Superintendent%20Documents/JC%20School%20Attendance%20Areas%20\(12-13-16\).pdf](https://www.ocps.net/sb/Superintendent%20Documents/JC%20School%20Attendance%20Areas%20(12-13-16).pdf)

- Step 1 - Superintendent commences rezoning
- Step 2 - Calendar (Timeline) developed
- Step 3 - Calendar shared
- Step 4 - Research, data collection and meetings with internal stakeholders
- Step 5 - Community Meeting(s)
- Step 6 - Rule Development Workshop
- Step 7 - Public Hearing
- Step 8 - Storage of materials

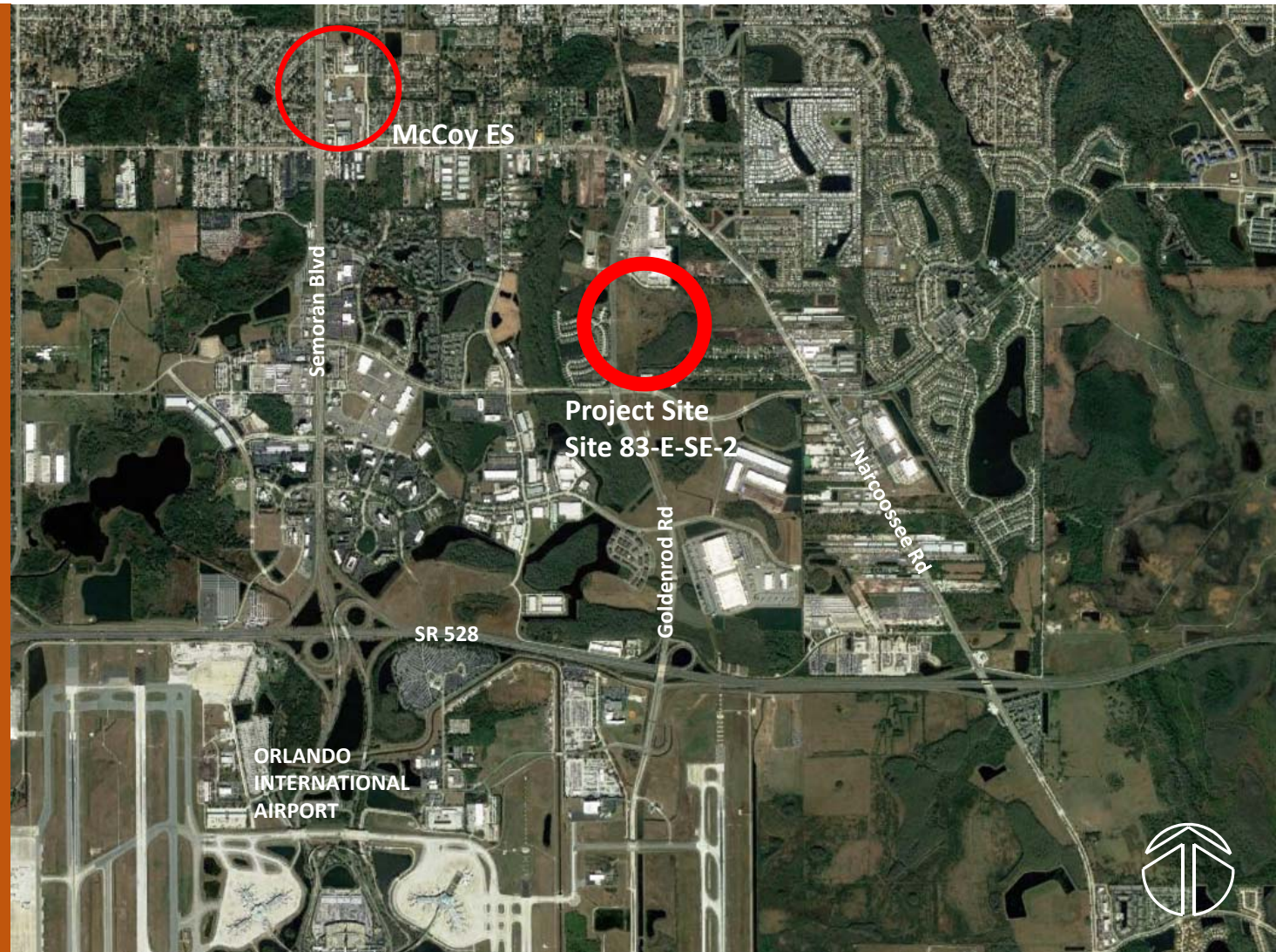
Planned Facility:

NEW Campus on vacant site to Meet District Standards for Elementary Schools:

- Prototypical Core Spaces

Enhanced Learning Environment:

- Latest Technology
- Planned Site Circulation
- Safety
- Community Asset



Aerial Map



Planned Facility:

NEW Campus on vacant site to
Meet District Standards for
Elementary Schools:

- Prototypical Core Spaces

Enhanced Learning Environment:

- Latest Technology
- Planned Site Circulation
- Safety
- Community Asset



Aerial Map

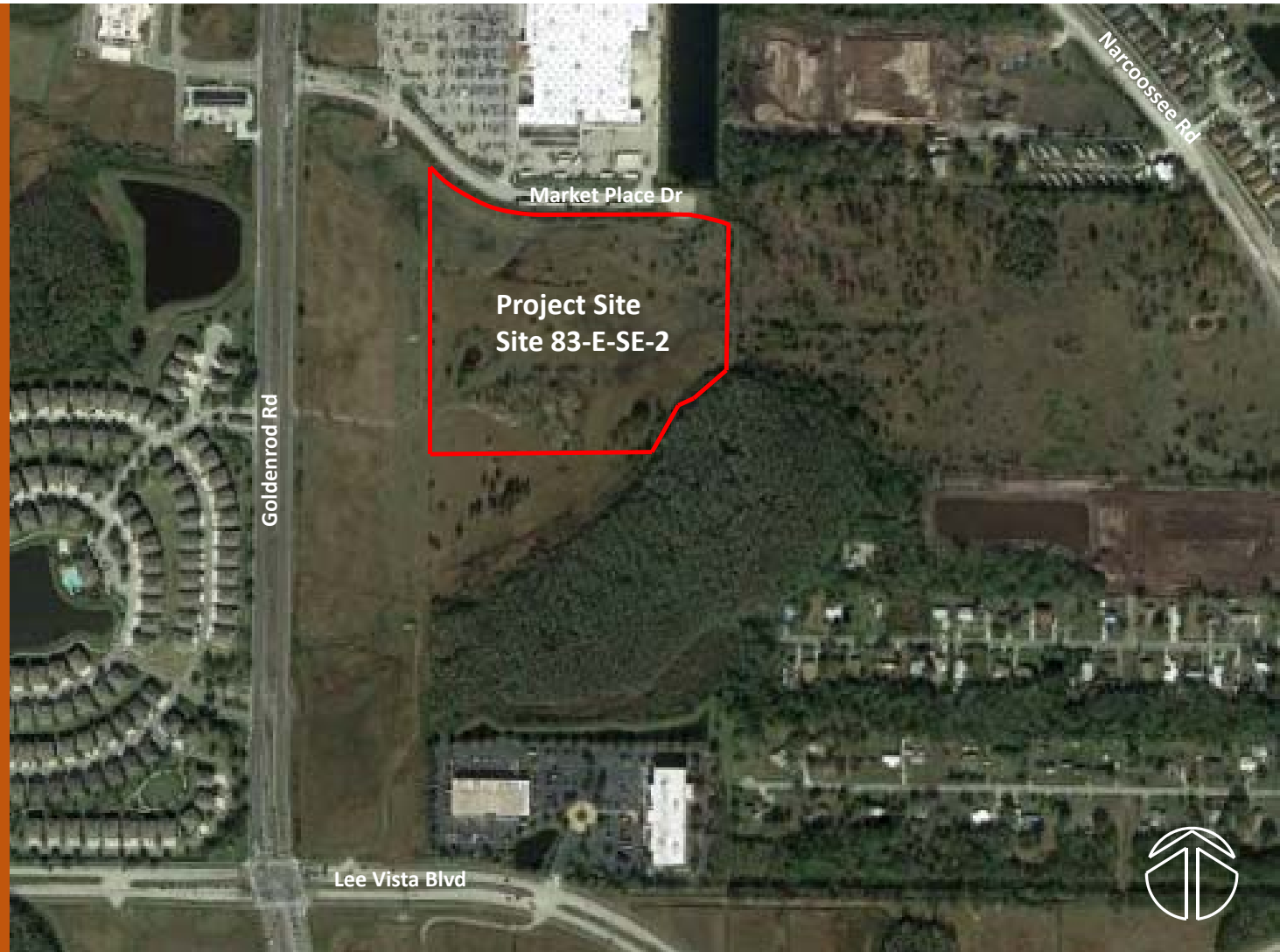
Planned Facility:

NEW Campus on vacant site to
Meet District Standards for
Elementary Schools:

- Prototypical Core Spaces

Enhanced Learning Environment:

- Latest Technology
- Planned Site Circulation
- Safety
- Community Asset



Aerial Map

Planned Facility:

Site

- 18 Acres
- Future Road Extension
- Separate Bus and Parent Drives
- Queuing for 166 Cars
- 140 Parking Spaces



Site Plan



Sustainability



Site:

- Low Impact Design (LID) stormwater design
- Native/low water plants – reduce water consumption

Building:

- 10% more energy efficient than ASHRAE 90.1 standard
- High Efficiency Chillers (8% energy reduction)
- Light colored roof to reduce heat gain and improves energy performance
- Energy Star rated equipment
- Water saving toilets, faucets, and fixtures
- All general classrooms have daylighting
- Over 75% of ALL spaces have daylighting
- Thermal efficient windows/glazing
- Fully automated building controls system 10% more energy



Example - Classroom

Planned Facility:

☑ Technology : Campus

The technology package will include:

- Student and teacher computers
- Interactive Flat Panel
- White boards
- Skills labs (Computer & Science)
- Wireless Access
- Audio Enhancement



Example - Technology

Planned Facility:

☒ Media Center

The Media Center will include:

- Genius bar
- Library tables for an entire class
- Story-telling area
- CCTV studio
- Audio Enhancement



Example – Media Center

Planned Facility:

☒ Cafeteria

The Cafeteria will include:

- Kitchen
- Two Serving Lines
- Teacher Dining
- Elevated Stage
- Extended Day Office
- Restrooms



Example – Multi-Purpose Room

Planned Facility:

☑ Specialty Classrooms

- Art Classroom with kiln
- Science Classroom
- Music Classroom



Example – Music Room

Planned Facility:

☒ Administration

The administrative area includes:

- Single point of entry during school hours
- Lobby
- Administrative offices, workroom & storage
- Large conference room
- Clinic
- Teacher planning



Example – Administration / Lobby

Planned Facility:

☒ Physical Education

Physical Education will include:

- PE Office and storage
- Covered play canopy
- Basketball Courts
- Tot lot play structure
- Youth lot play structure
- Playfields



Example – Play Equipment

Planned Facility:

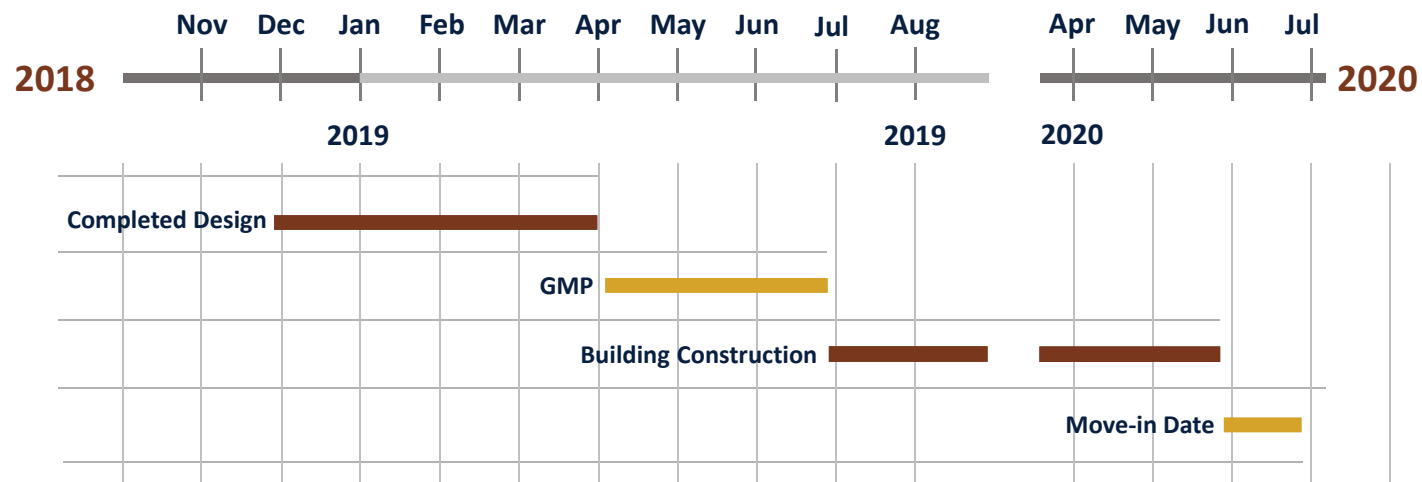
☑ Site Circulation

- On-site car stacking
- On-site parking
- Bus loop
- Covered walkways
- Safe pedestrian paths
- Bike racks



Example – Main Entry

Design & Construction Schedule





Questions & Answers