

Monday, September 17, 2018

# 30% Design Community Meeting

Site 85-E-W-4

Please sign in on your mobile device: <http://communitymeeting.ocps.net/>



**Orange County  
Public Schools**

# Site 85-E-W-4

## Meeting Agenda

September 17, 2018, 6:45PM

- Welcome – School Board Member, Pam Gould
- Introductions – Facilities Meeting Organizer  
Jessma Lambert
- Change Determination  
Julie Salvo
- Project Update  
Architect: Rhodes+Brito Architects  
Construction Manager: OHL, Teaming with Albu & Associates
- Questions and Answers
- Adjournment

# Orange County Review Process

- Change Determination Request (CDR-18-07-222) to Summerlake PD to allow for secondary bus access off of Wood Sage Drive at Red Stopper Lane
- Development Plan (DP) review and approval





## Planned Facility:

NEW Campus on vacant site to  
Meet District Standards for  
Elementary Schools:

- Prototypical Core Spaces

Enhanced Learning Environment:

- Latest Technology
- Planned Site Circulation
- Safety
- Community Asset





## Planned Facility:

NEW Campus on vacant site to  
Meet District Standards for  
Elementary Schools:

- Prototypical Core Spaces

Enhanced Learning Environment:

- Latest Technology
- Planned Site Circulation
- Safety
- Community Asset





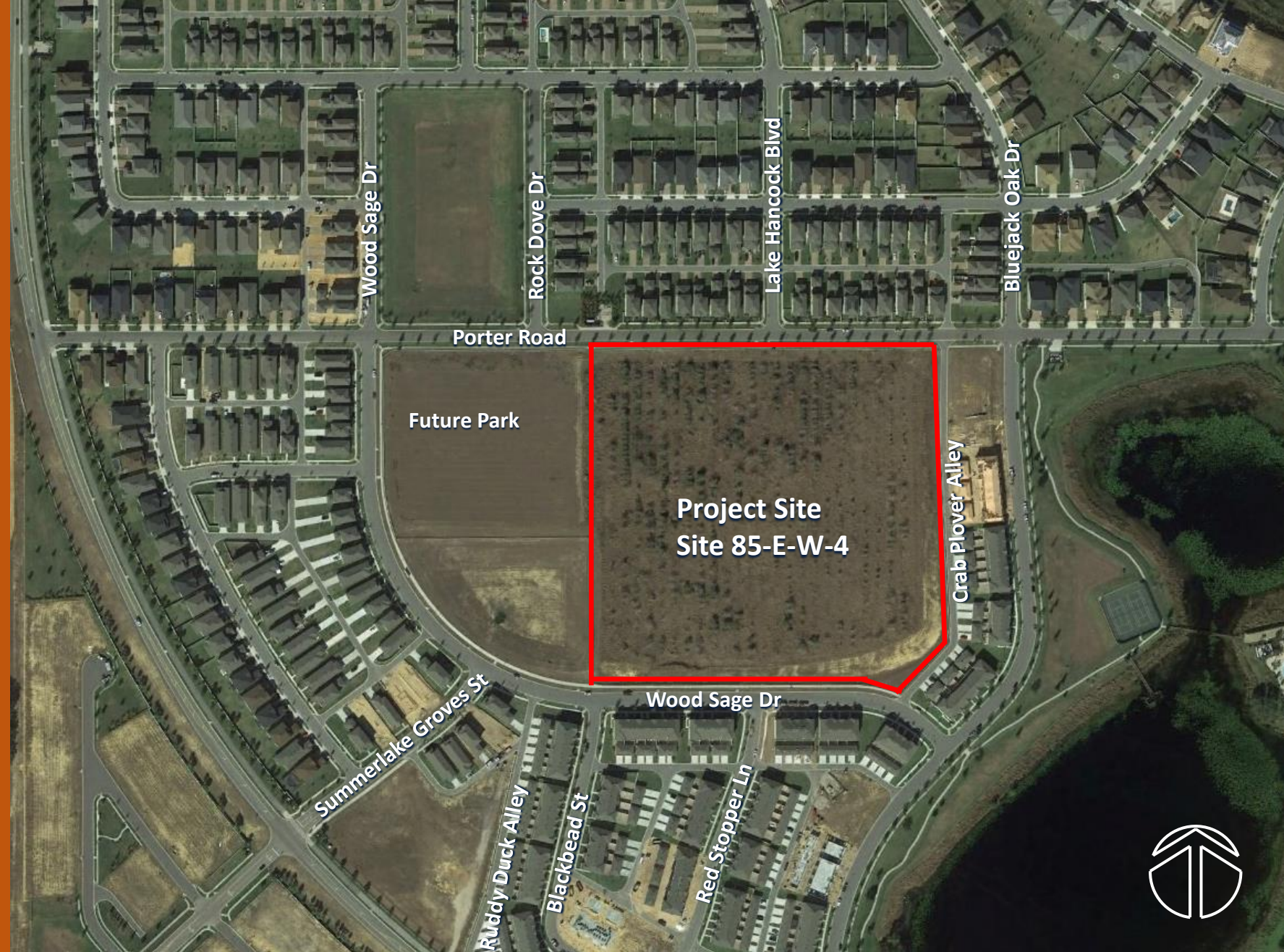
## Planned Facility:

NEW Campus on vacant site to  
Meet District Standards for  
Elementary Schools:

- Prototypical Core Spaces

Enhanced Learning Environment:

- Latest Technology
- Planned Site Circulation
- Safety
- Community Asset

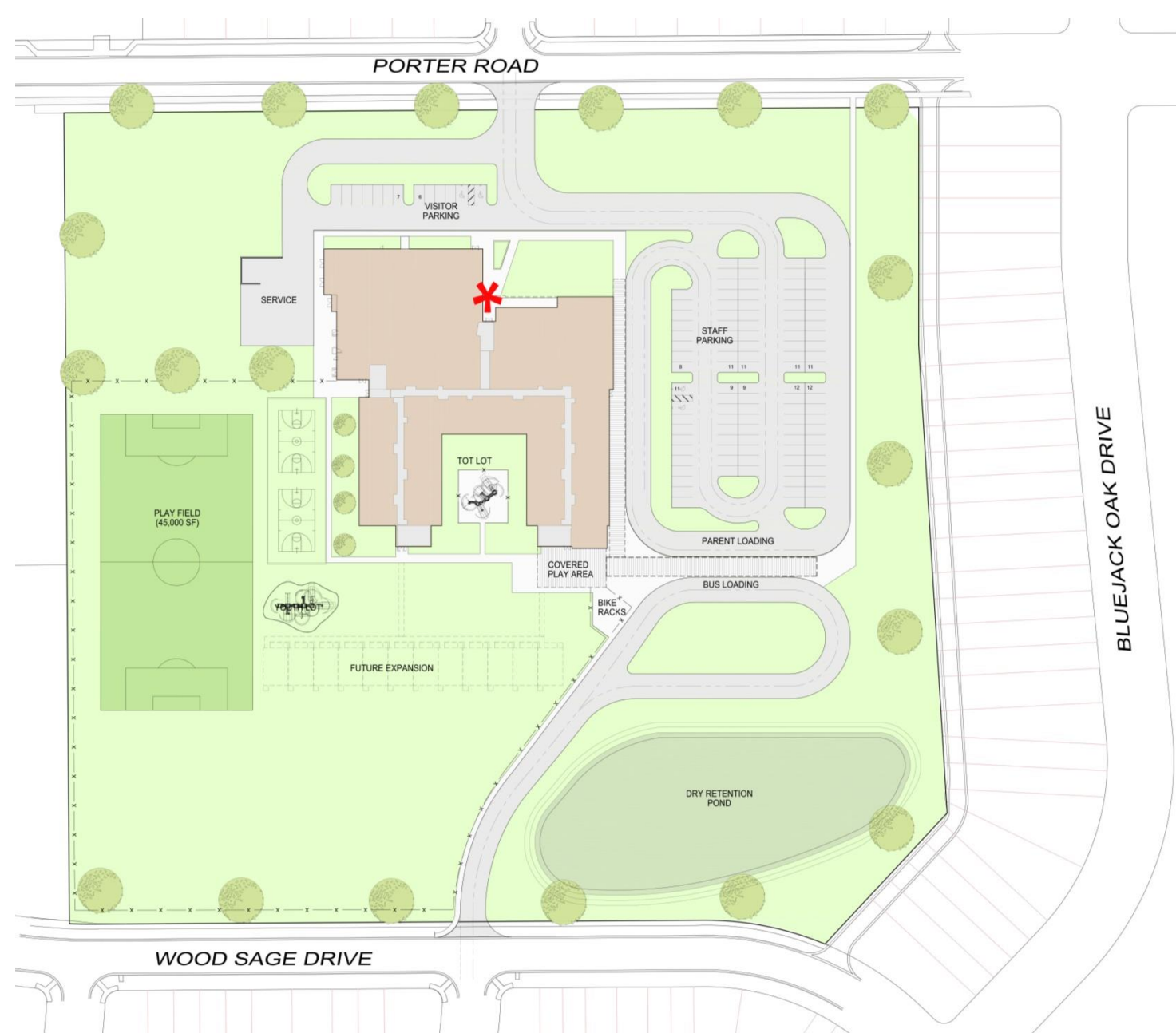




## Planned Facility:

### Site

- 14.8 Acres
- Topography
- Separate Bus and Parent Drives
- Queuing for 130 Cars
- Shared Bus and Parent Loading
- 120 Parking Spaces
- Future Park Planned Adjacent to Site









## Planned Facility:

☑ Technology : Campus

The technology package will include:

- Student and teacher computers
- Interactive Flat Panel
- White boards
- Skills labs (Computer & Science)
- Wireless Access
- Audio Enhancement





## Planned Facility:

☑ Media Center

The Media Center will include:

- Genius bar
- Library tables for an entire class
- Story-telling area
- CCTV studio
- Audio Enhancement





## Planned Facility:

☑ Cafeteria

The Cafeteria will include:

- Kitchen
- Two Serving Lines
- Teacher Dining
- Elevated Stage
- Extended Day Office
- Restrooms





## Planned Facility:

### ☑ Specialty Classrooms

- Art Classroom with kiln
- Science Classroom
- Music Classroom





## Planned Facility:

☑ Administration

The administrative area includes:

- Single point of entry during school hours
- Lobby
- Administrative offices, workroom & storage
- Large conference room
- Clinic
- Teacher planning





## Planned Facility:

☑ Physical Education

Physical Education will include:

- PE Office and storage
- Covered play canopy
- Basketball Courts
- Tot lot play structure
- Youth lot play structure
- Playfields





## Planned Facility:

### ☑ Site Circulation

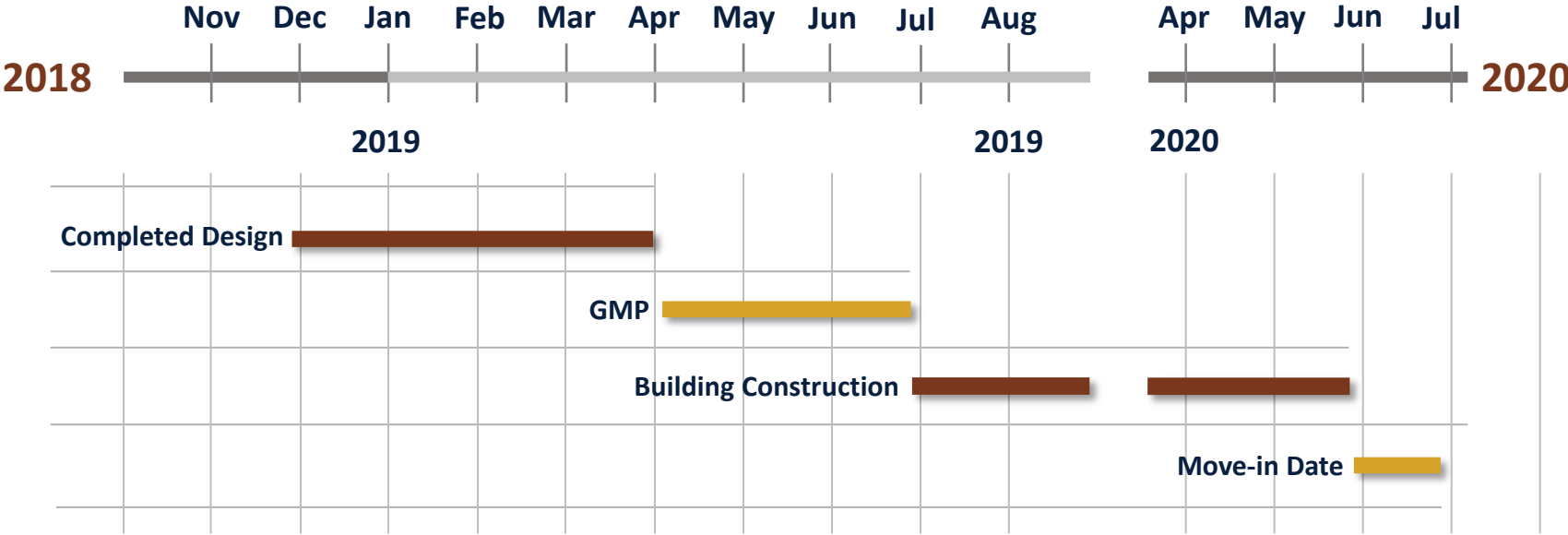
- On-site car stacking
- On-site parking
- Bus loop
- Covered walkways
- Safe pedestrian paths
- Bike racks



Example – Main Entry



# Design & Construction Schedule





# Sustainability



## Site:

- Low Impact Design (LID) stormwater design
- Native/low water plants – reduce water consumption

## Building:

- 10% more energy efficient than ASHRAE 90.1 standard
- High Efficiency Chillers (8% energy reduction)
- Light colored roof to reduce heat gain and improves energy performance
- Energy Star rated equipment
- Water saving toilets, faucets, and fixtures
- All general classrooms have daylighting
- Over 75% of ALL spaces have daylighting
- Thermal efficient windows/glazing
- Fully automated building controls system 10% more energy





# Questions & Answers